

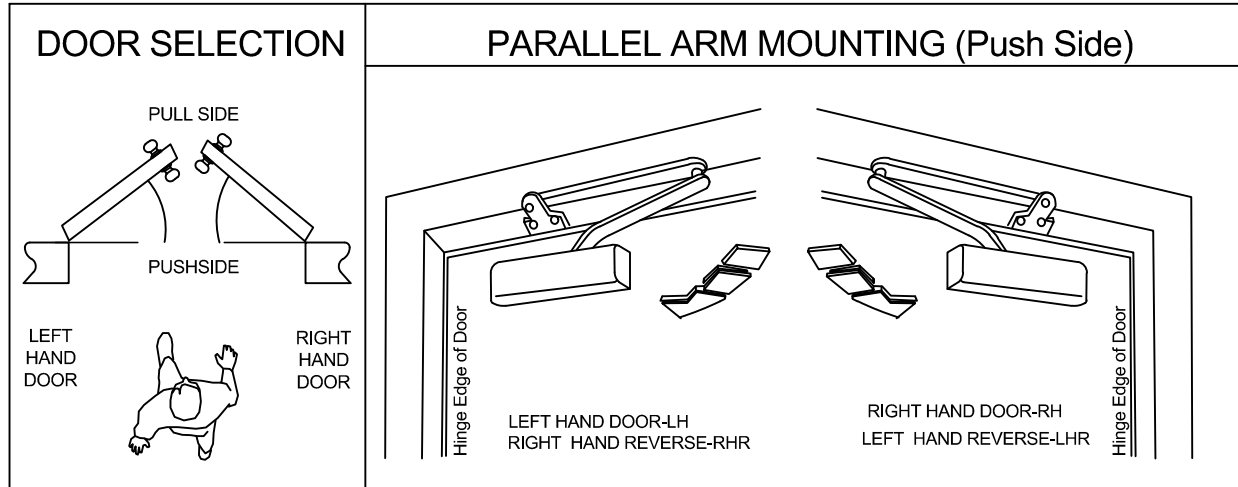


801 SERIES DOOR CLOSER SUPER RIGID PARALLEL ARM

INSTALLATION INSTRUCTION FOR CAL-ROYAL 801 SERIES DOOR CLOSER
(HOLD-OPEN & NON HOLD-OPEN TYPE)

Model No. SPAS/900 (NON HOLD-OPEN)

HOSRPS/900 (HOLD-OPEN)



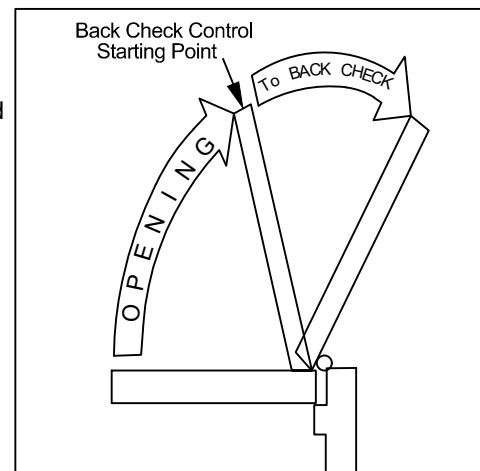
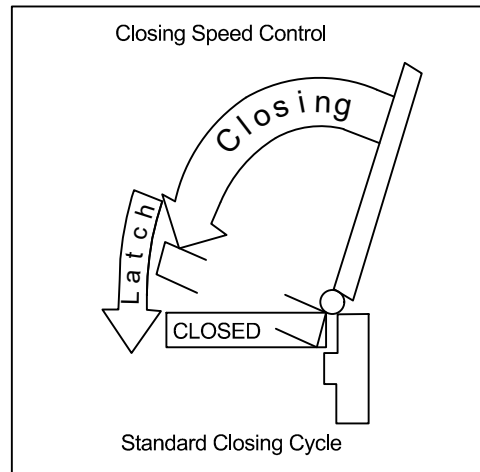
GENERAL DESCRIPTIONS:

The 801 series closer are non-handed for right or left hand doors designed to meet entrance accessibility requirements. The 801 series are spring power adjustable for all exterior/interior door up to 58" (1470mm) wide doors and up to 330 Lbs (150Kg.) weight.

Adjust the spring power before installing the door closer according to the "POWER ADJUSTMENT CHART FOR DOOR SELECTION" as shown on page. 4

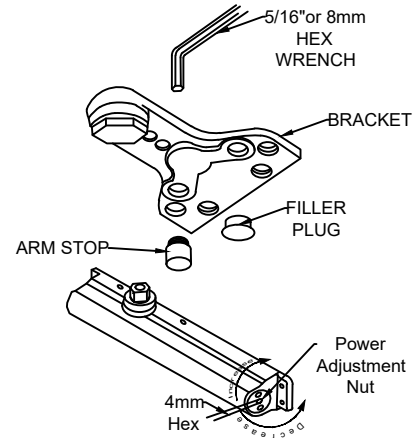
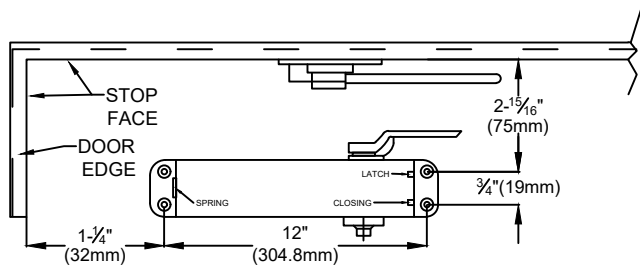
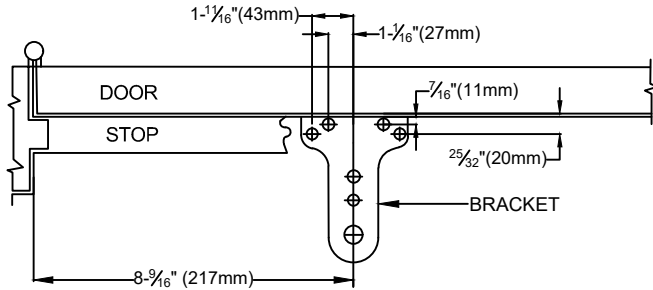
The 801 series closer are installed BACK CHECK function as a standard which is essential to the proper operation of the SUPER RIGID PARALLEL ARM. Use just enough to prevent arm striking stop with impact.

The delayed action (optional) function can not be used for this arm because this arm permits maximum 100° door open angle.



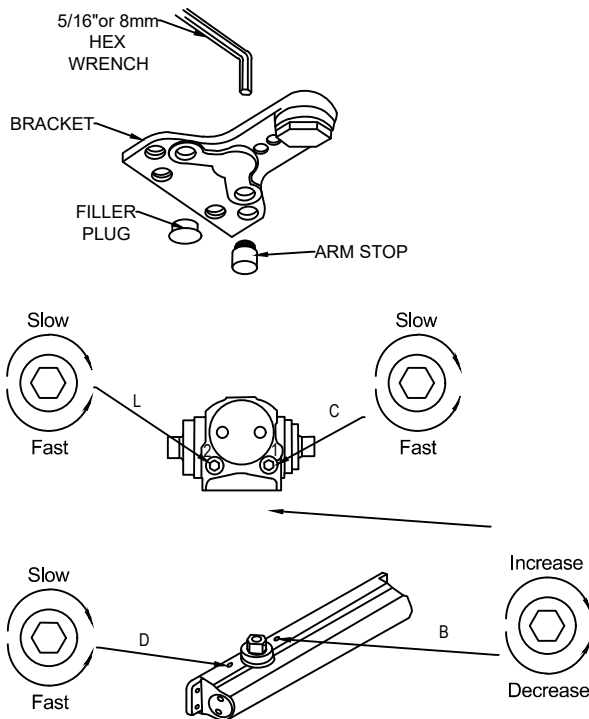
INSTALLATION INSTRUCTIONS CUSH ARM, CUSH HOLD OPEN ARM

PARALLEL ARM (PUSH SIDE) MOUNTING LEFT HAND DOOR SHOWN

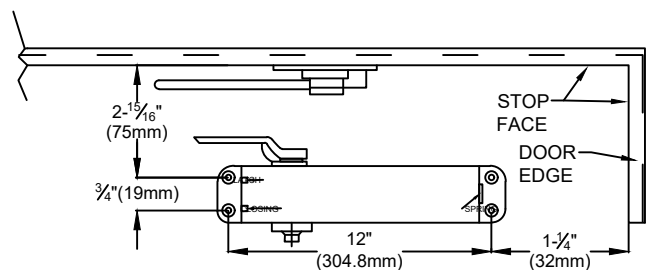
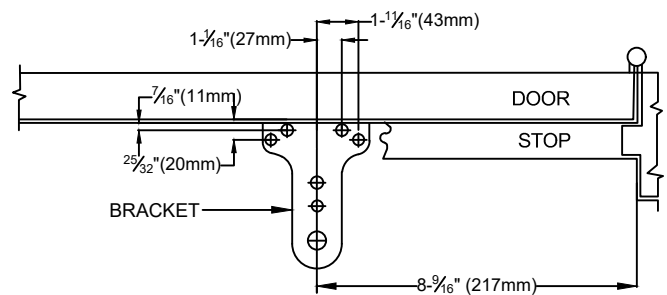


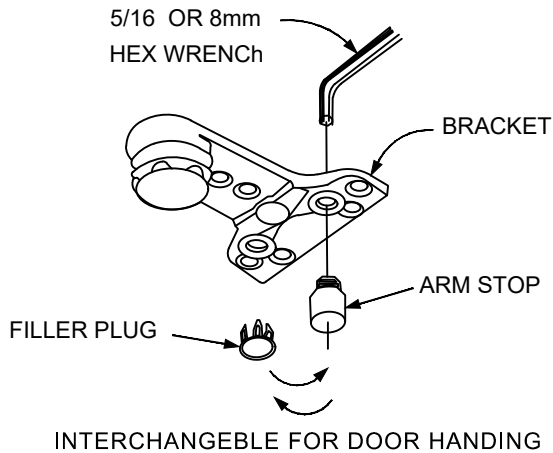
Power Adjustment Chart

MAXIMUM DOOR WIDTH		TURNS REQUIRED
EXTERIOR DOORS	INTERIOR DOORS	
	8.5 lb-f	6 TURNS C.C.W.
8.5 lb-f	34"(864)	3 TURNS C.C.W.
30"(762)	38"(962)	PRESET
36"(914)	48"(1219)	3 TURNS C.W.
42"(1067)	54"(1372)	7 TURNS C.W.
48"(1219)	60"(1524)	12 TURNS C.W.



PARALLEL ARM (PUSH SIDE) MOUNTING RIGHT HAND DOOR SHOWN





THE HAND MUST BE CORRECT BEFORE THE BRACKET IS MOUNTED TO THE DOOR STOP (TOP JAMB). Refer to page 1.

FOR LEFT HAND DOORS:

All bracket are shipped assembled for LEFT HAND DOOR. Insert 5/16" (8mm) hex wrench into ARM STOP and turn anti-clockwise to seat as tightly as possible. Push filler plug in firmly.

FOR RIGHT HAND DOORS:

Push filler plug out of bracket Using a 5/16" (8mm) hex wrench turn ARM STOP clockwise to remove from bracket insert in hole marked "R". Turn hex wrench clockwise to seat ARM STOP as tightly as possible. Push filler into other hole.

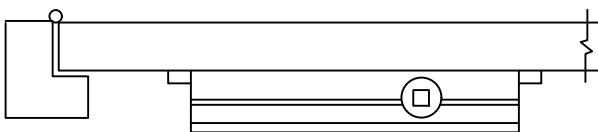
INSTALLATION SEQUENCE

LEFT HAND DOOR SHOWN - RIGHT HAND DOOR OPPOSITE



INSTALLATION INSTRUCTIONS:

1. Using template dimensions shown above, mark FOUR (4) HOLES ON DOOR for door closer and THREE (3) HOLES ON FRAME for parallel bracket.
2. Mount closer on door using screws provided. SPEED ADJUSTING VALVE MUST POSITIONED TOWARD AWAY FROM HINGE EDGE.
3. Adjusting spring power to match door width or weight as indicated by Power Adjustment Chart shown on page 2.
4. Mount closer on door to dimensions shown on page 2.



IMPORTANT REMARK

Do not allow door to slam into frame.

A normal standard closing time from 90° open position is 5 to 7 second evenly divided between main closing (sweep) speed and latching speed Adjust the CLOSING speed first, then adjust the LATCHING speed.

ADJUSTABLE BACK CHECK FUNCTION

This function is essential to the proper operation of the SUPER RIGID PARALLEL ARM. Use just enough to prevent arm to striking stop with impact. See page 2.

ATTACH COVER

Install cover securely using screw provided.

HOW TO HOLD-OPEN (90° STOP)

A quarter turn on the HOLD-OPEN CONTROL HANDLE engages or disengages hold-open.

