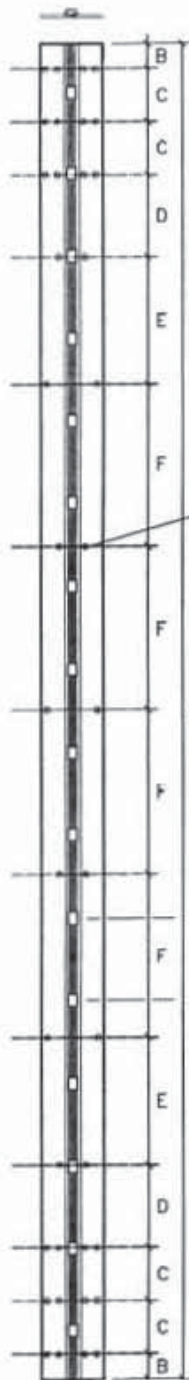


CONTINUOUS HINGE TEMPLATE

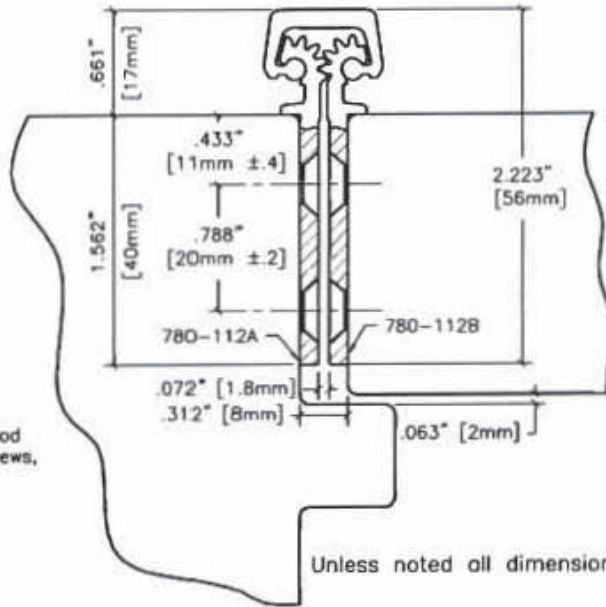


#12 x B2" F.H. countersunk wood or machine screws, (38 places).

16 bearings spaced equally @ 5.125" center to center.

2.684" [68.2mm] Ref.

End of hinge to first bearing, both ends.



Vertical Hole Spacing

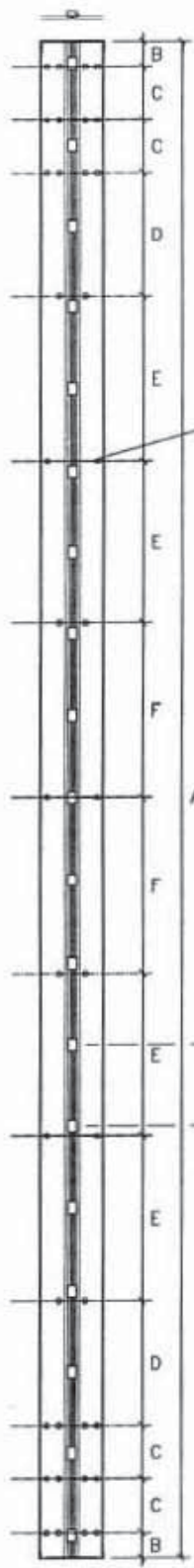
Non cumulative tolerances on hole to hole spacing.

	Metric (mm)	Decimal (in.)
A	2108.0 ±.008	82.992 ±.008
B	40.0 ±.25	1.575 ±.010
C	85.0 ±.20	3.346 ±.008
D	130.0 ±.20	5.118 ±.008
E	200.0 ±.20	7.874 ±.008
F	257.0 ±.20	10.118 ±.008



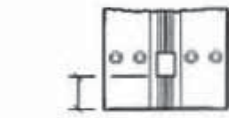
CAL-ROYAL PRODUCTS, INC

CR781120 83"



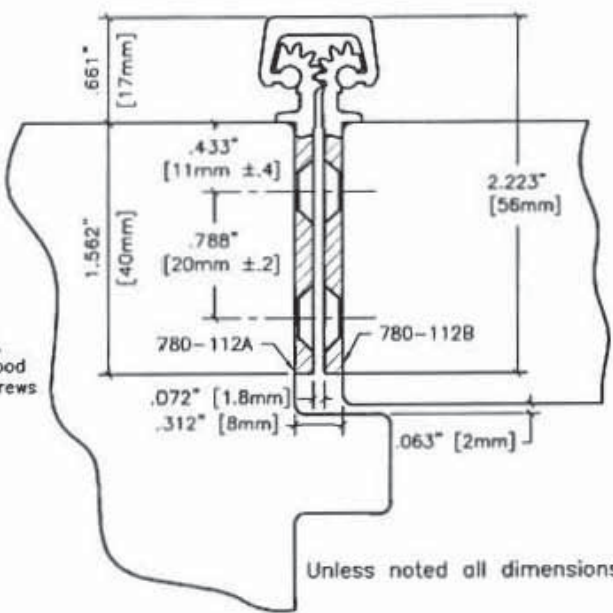
#12 x 82" F.H. countersunk wood or machine screws (38 places).

19 bearings spaced equally
 ● 5.125" center to center.



1.020" [25.9mm] Ref.

End of hinge to first bearing, both ends.



Unless noted all dimensions $\frac{\pm.020"}{\pm.5mm}$

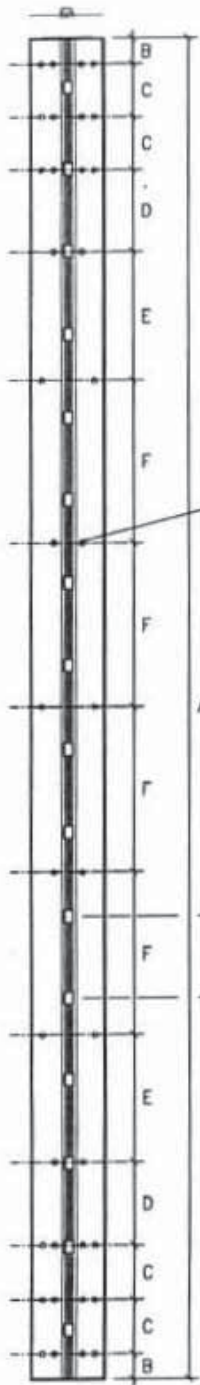
Vertical Hole Spacing

Non cumulative tolerances on hole to hole spacing.

	Metric (mm)	Decimal (in.)
A	2414.0 ±.25	95.039 ±.008
B	40.0 ±.25	1.575 ±.010
C	85.0 ±.20	3.346 ±.008
D	200.0 ±.20	7.874 ±.008
E	260.0 ±.20	10.236 ±.008
G	277.0 ±.20	10.906 ±.008

CAL-ROYAL PRODUCTS, INC

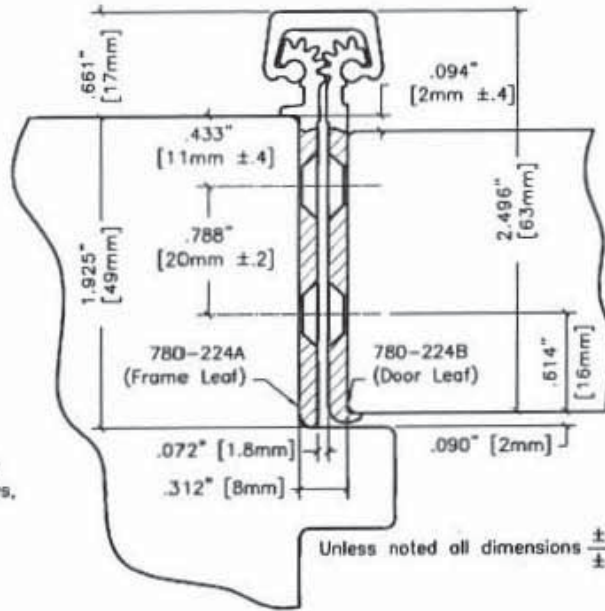
CR781120 95"



#12 x 82" F.H. countersunk wood or machine screws, (38 places).

16 bearings spaced equally @ 5.125" center to center.

2.684" [68.2mm] Ref.
End of hinge to first bearing, both ends.



Unless noted all dimensions $\pm .020"$
 $\pm .5mm$

Vertical Hole Spacing

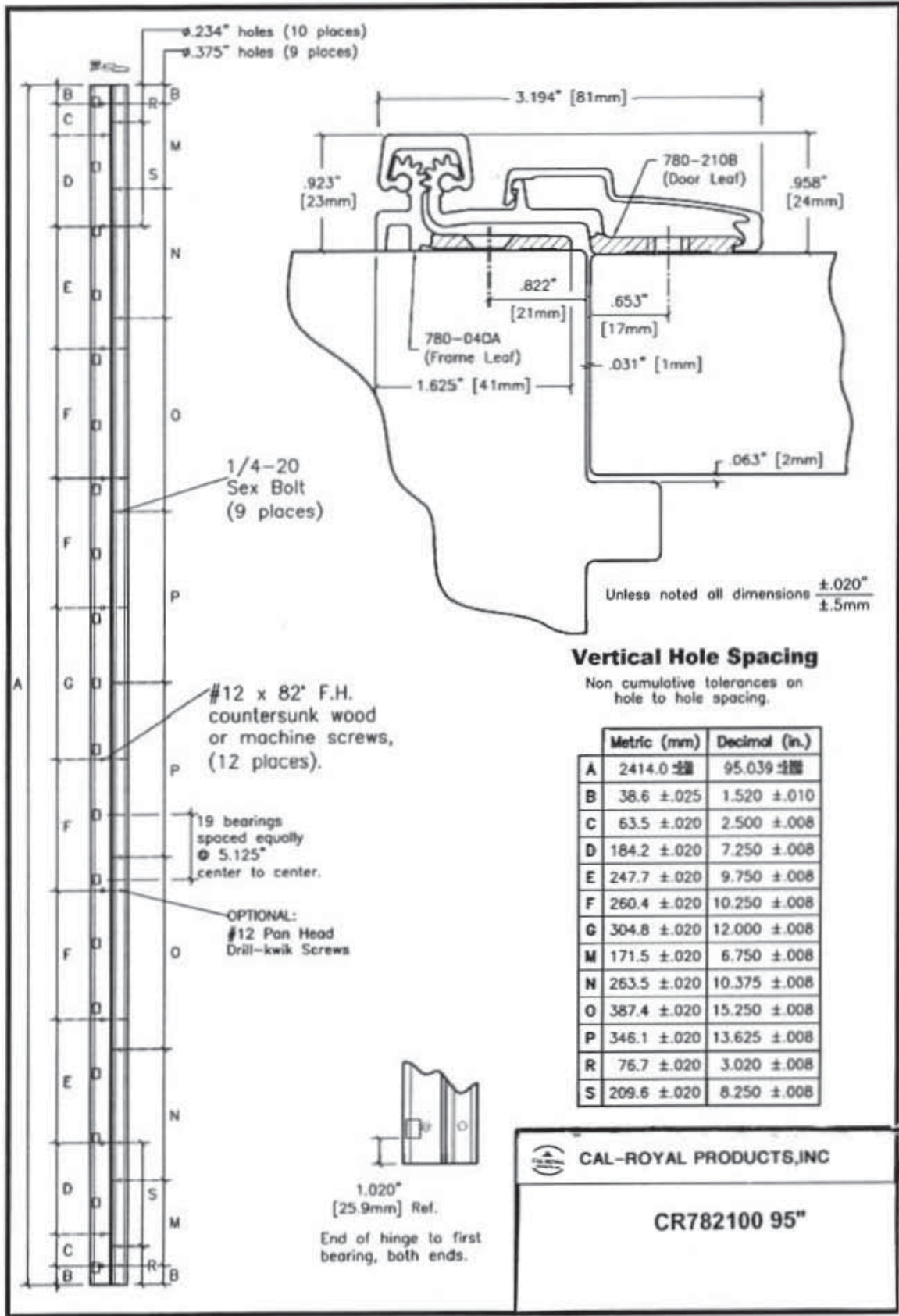
Non cumulative tolerances on hole to hole spacing.

	Metric (mm)	Decimal (in.)
A	2108.0 $\pm .20$	82.992 $\pm .008$
B	40.0 $\pm .25$	1.575 $\pm .010$
C	85.0 $\pm .20$	3.346 $\pm .008$
D	130.0 $\pm .20$	5.118 $\pm .008$
E	200.0 $\pm .20$	7.874 $\pm .008$
F	257.0 $\pm .20$	10.118 $\pm .008$



CAL-ROYAL PRODUCTS

CR782240 83"



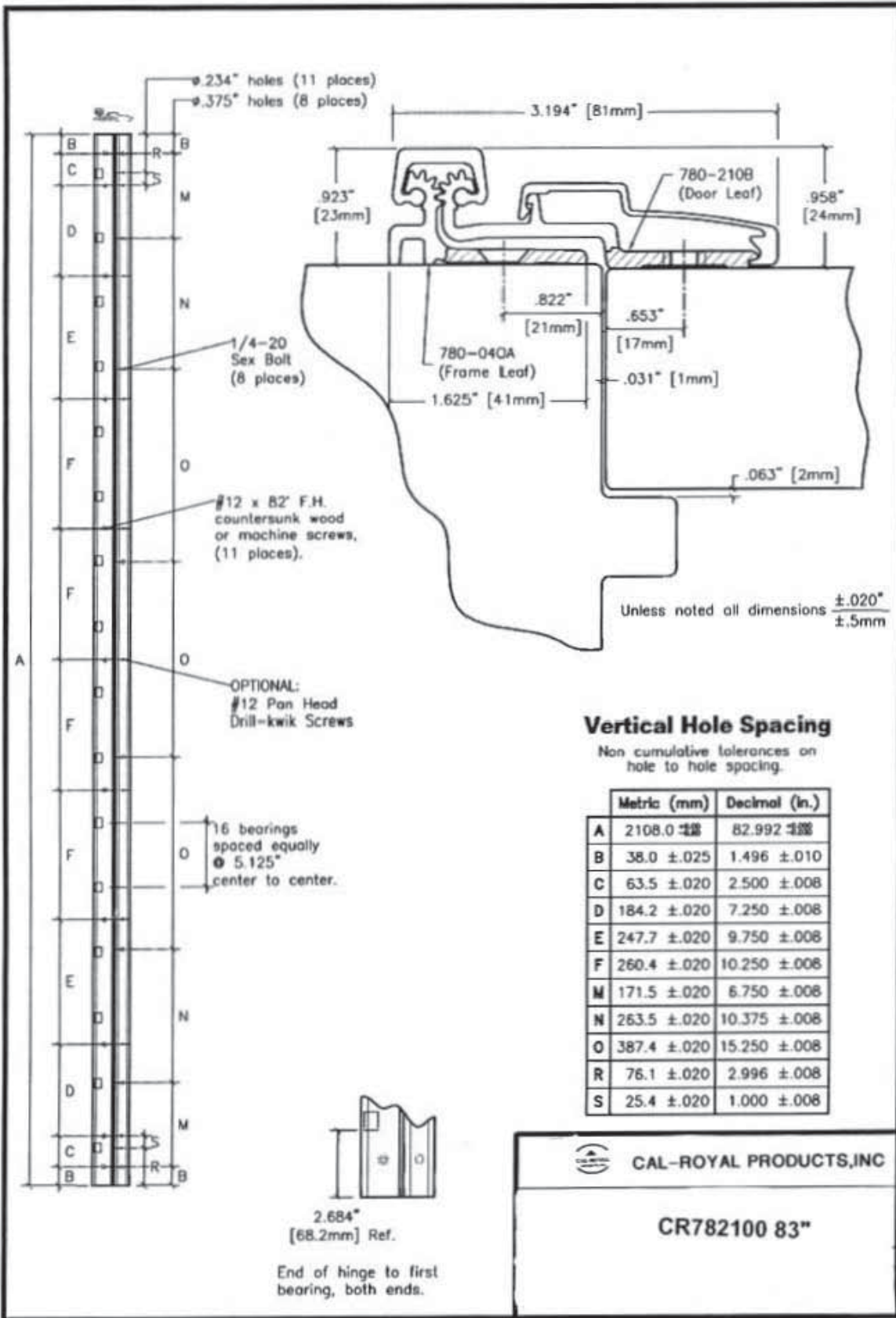
Vertical Hole Spacing

Non cumulative tolerances on hole to hole spacing.

	Metric (mm)	Decimal (in.)
A	2414.0 \pm .008	95.039 \pm .008
B	38.6 \pm .025	1.520 \pm .010
C	63.5 \pm .020	2.500 \pm .008
D	184.2 \pm .020	7.250 \pm .008
E	247.7 \pm .020	9.750 \pm .008
F	260.4 \pm .020	10.250 \pm .008
G	304.8 \pm .020	12.000 \pm .008
M	171.5 \pm .020	6.750 \pm .008
N	263.5 \pm .020	10.375 \pm .008
O	387.4 \pm .020	15.250 \pm .008
P	346.1 \pm .020	13.625 \pm .008
R	76.7 \pm .020	3.020 \pm .008
S	209.6 \pm .020	8.250 \pm .008

CAL-ROYAL PRODUCTS, INC

CR782100 95"



Unless noted all dimensions $\pm .020"$
 $\pm .5mm$

Vertical Hole Spacing


Non cumulative tolerances on hole to hole spacing.

	Metric (mm)	Decimal (in.)
A	2108.0 $\pm .008$	82.992 $\pm .008$
B	38.0 $\pm .025$	1.496 $\pm .010$
C	63.5 $\pm .020$	2.500 $\pm .008$
D	184.2 $\pm .020$	7.250 $\pm .008$
E	247.7 $\pm .020$	9.750 $\pm .008$
F	260.4 $\pm .020$	10.250 $\pm .008$
M	171.5 $\pm .020$	6.750 $\pm .008$
N	263.5 $\pm .020$	10.375 $\pm .008$
O	387.4 $\pm .020$	15.250 $\pm .008$
R	76.1 $\pm .020$	2.996 $\pm .008$
S	25.4 $\pm .020$	1.000 $\pm .008$

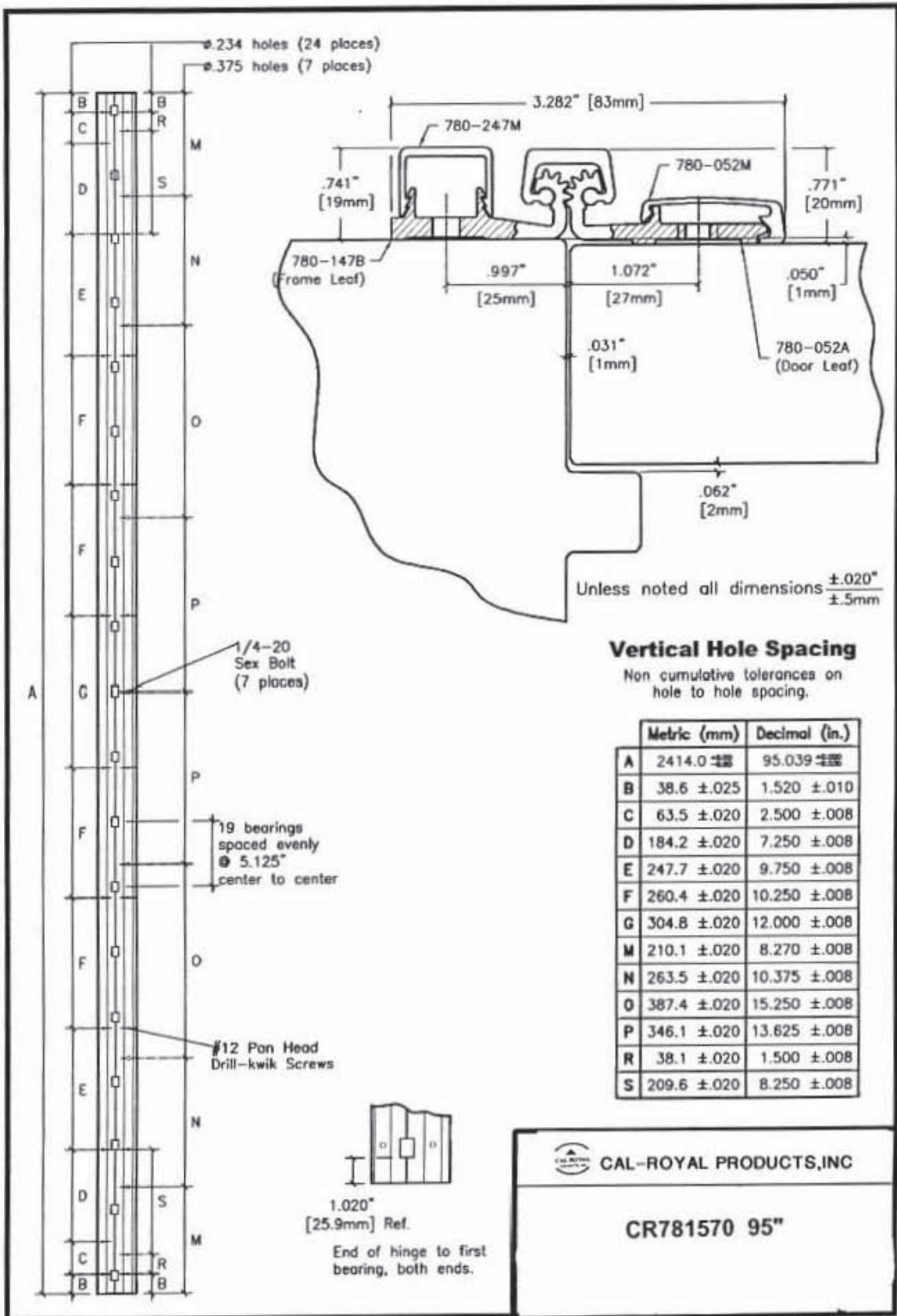


2.684" [68.2mm] Ref.

End of hinge to first bearing, both ends.


CAL-ROYAL PRODUCTS, INC


CR782100 83"



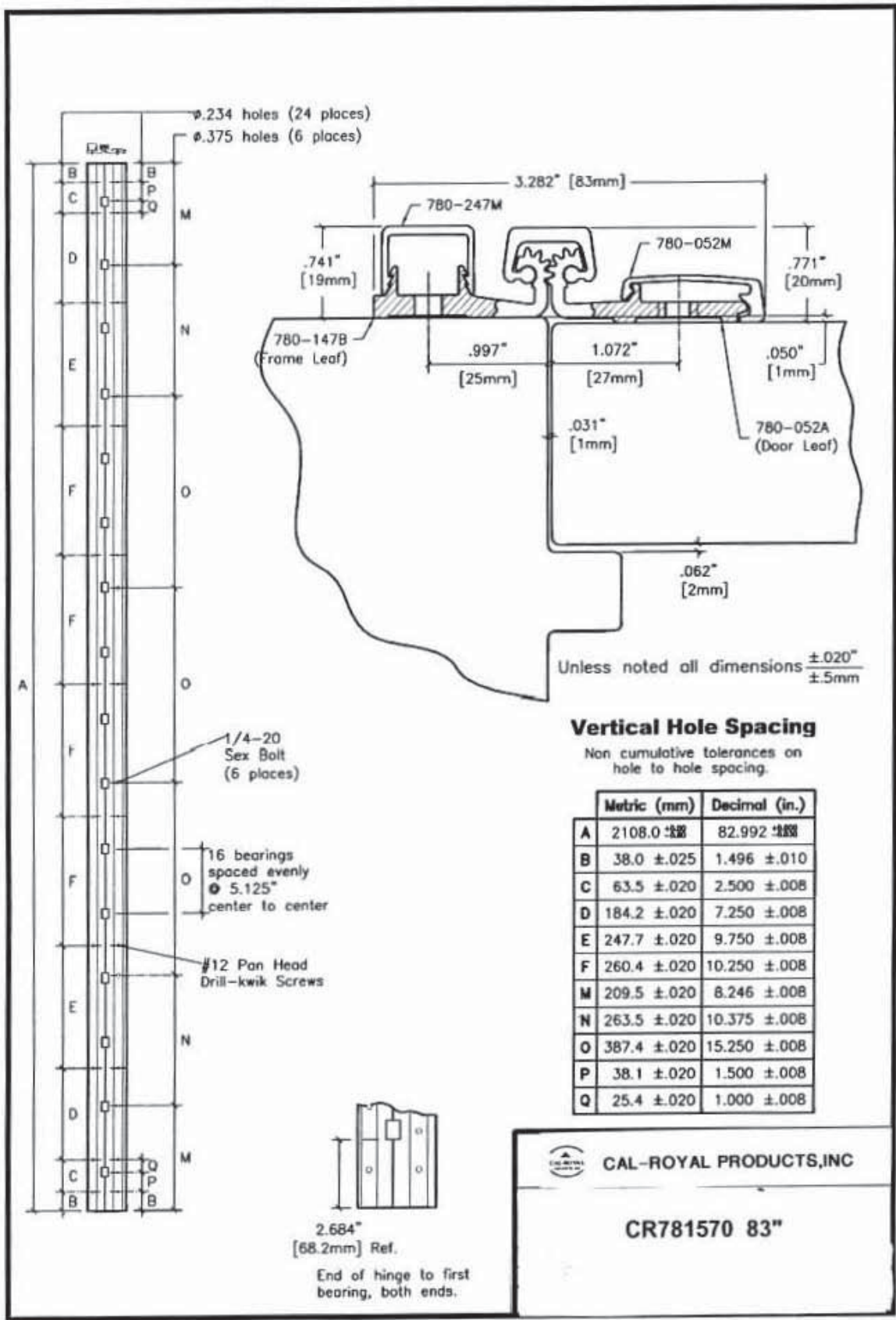
Vertical Hole Spacing

Non cumulative tolerances on hole to hole spacing.

	Metric (mm)	Decimal (in.)
A	2414.0 $\pm.300$	95.039 $\pm.012$
B	38.6 $\pm.025$	1.520 $\pm.010$
C	63.5 $\pm.020$	2.500 $\pm.008$
D	184.2 $\pm.020$	7.250 $\pm.008$
E	247.7 $\pm.020$	9.750 $\pm.008$
F	260.4 $\pm.020$	10.250 $\pm.008$
G	304.8 $\pm.020$	12.000 $\pm.008$
M	210.1 $\pm.020$	8.270 $\pm.008$
N	263.5 $\pm.020$	10.375 $\pm.008$
O	387.4 $\pm.020$	15.250 $\pm.008$
P	346.1 $\pm.020$	13.625 $\pm.008$
R	38.1 $\pm.020$	1.500 $\pm.008$
S	209.6 $\pm.020$	8.250 $\pm.008$


CAL-ROYAL PRODUCTS, INC

CR781570 95"

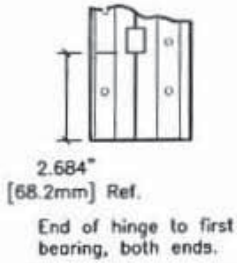



Unless noted all dimensions $\pm 0.020''$
 $\pm 5mm$

Vertical Hole Spacing

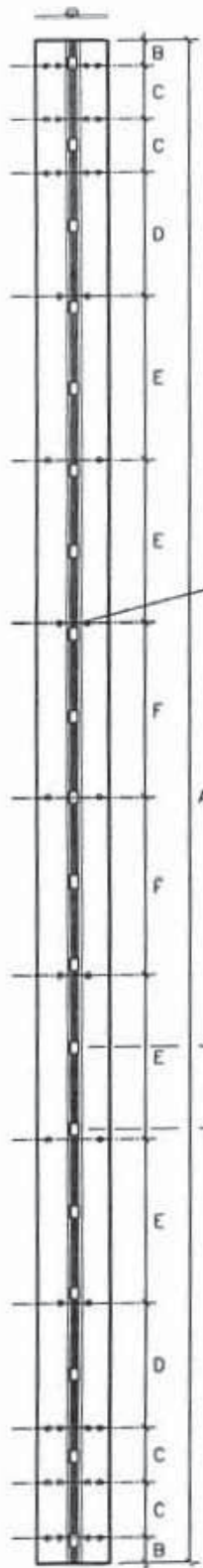
Non cumulative tolerances on hole to hole spacing.

	Metric (mm)	Decimal (in.)
A	2108.0 ± 0.020	82.992 ± 0.008
B	38.0 ± 0.025	1.496 ± 0.010
C	63.5 ± 0.020	2.500 ± 0.008
D	184.2 ± 0.020	7.250 ± 0.008
E	247.7 ± 0.020	9.750 ± 0.008
F	260.4 ± 0.020	10.250 ± 0.008
M	209.5 ± 0.020	8.246 ± 0.008
N	263.5 ± 0.020	10.375 ± 0.008
O	387.4 ± 0.020	15.250 ± 0.008
P	38.1 ± 0.020	1.500 ± 0.008
Q	25.4 ± 0.020	1.000 ± 0.008



 **CAL-ROYAL PRODUCTS, INC**

CR781570 83"

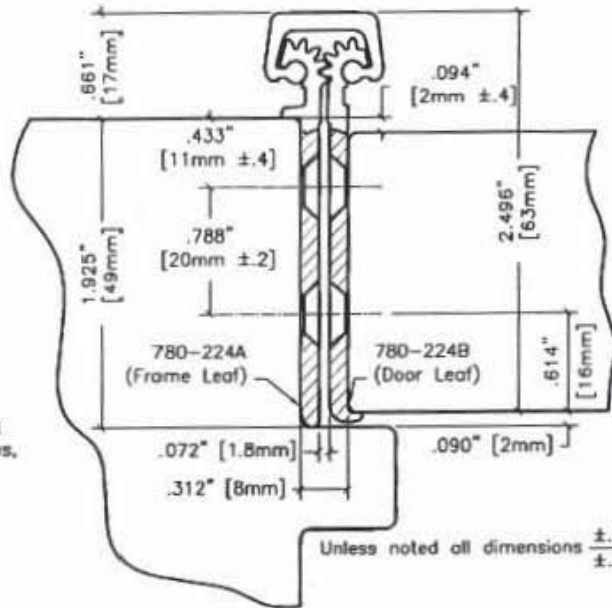


#12 x 82" F.H. countersunk wood or machine screws, (38 places).

19 bearings spaced equally @ 5.125" center to center.

1.020" [25.9mm] Ref.

End of hinge to first bearing, both ends.



Unless noted all dimensions $\pm .020"$
 $\pm .5mm$

Vertical Hole Spacing

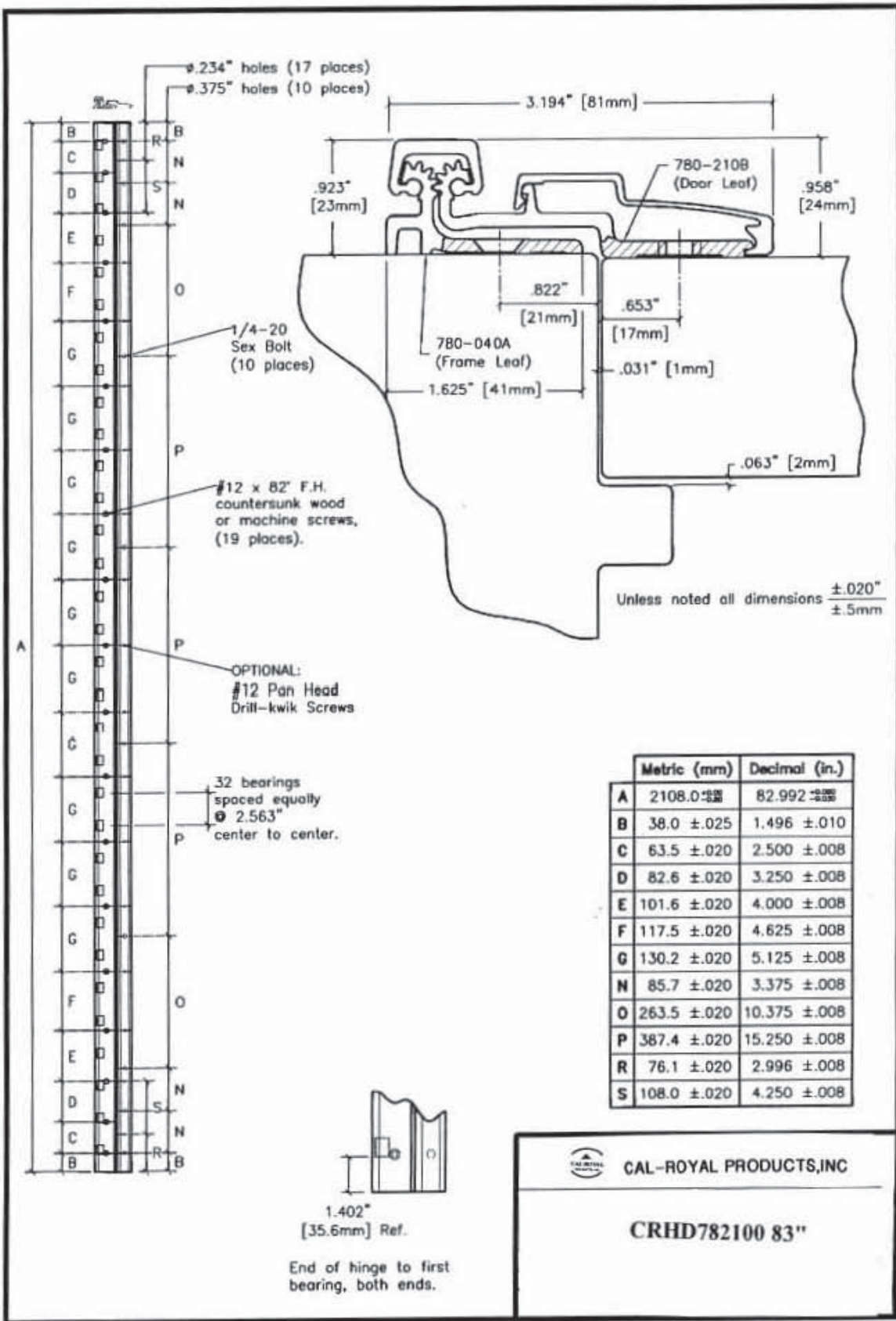
Non cumulative tolerances on hole to hole spacing.

	Metric (mm)	Decimal (in.)
A	2414.0 ±.25	95.039 ±.010
B	40.0 ±.25	1.575 ±.010
C	85.0 ±.20	3.346 ±.008
D	200.0 ±.20	7.874 ±.008
E	260.0 ±.20	10.236 ±.008
G	277.0 ±.20	10.906 ±.008




CAL-ROYAL PRODUCTS, INC

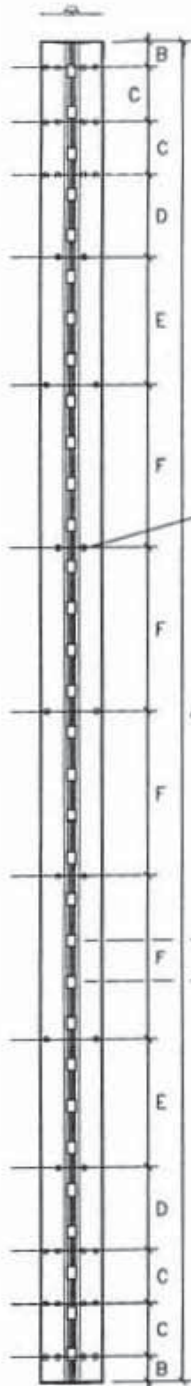
CR782240 95"



	Metric (mm)	Decimal (in.)
A	2108.0 $\pm .020$	82.992 $\pm .020$
B	38.0 $\pm .025$	1.496 $\pm .010$
C	63.5 $\pm .020$	2.500 $\pm .008$
D	82.6 $\pm .020$	3.250 $\pm .008$
E	101.6 $\pm .020$	4.000 $\pm .008$
F	117.5 $\pm .020$	4.625 $\pm .008$
G	130.2 $\pm .020$	5.125 $\pm .008$
N	85.7 $\pm .020$	3.375 $\pm .008$
O	263.5 $\pm .020$	10.375 $\pm .008$
P	387.4 $\pm .020$	15.250 $\pm .008$
R	76.1 $\pm .020$	2.996 $\pm .008$
S	108.0 $\pm .020$	4.250 $\pm .008$

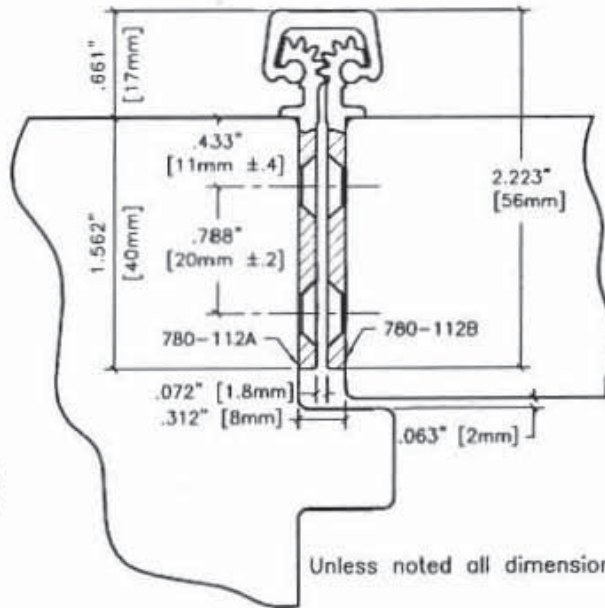

CAL-ROYAL PRODUCTS, INC.

CRHD782100 83"



#12 x 82 F.H.
countersunk wood
or machine screw
(38 places).

32 bearings
spaced equally
⌀ 2.563"
center to center.

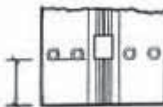


Unless noted all dimensions $\frac{\pm .020''}{\pm .5mm}$

Vertical Hole Spacing

Non cumulative tolerances on
hole to hole spacing.

	Metric (mm)	Decimal (in.)
A	2108.0 $\pm .008$	82.992 $\pm .008$
B	40.0 $\pm .25$	1.575 $\pm .010$
C	85.0 $\pm .20$	3.346 $\pm .008$
D	130.0 $\pm .20$	5.118 $\pm .008$
E	200.0 $\pm .20$	7.874 $\pm .008$
F	257.0 $\pm .20$	10.118 $\pm .008$



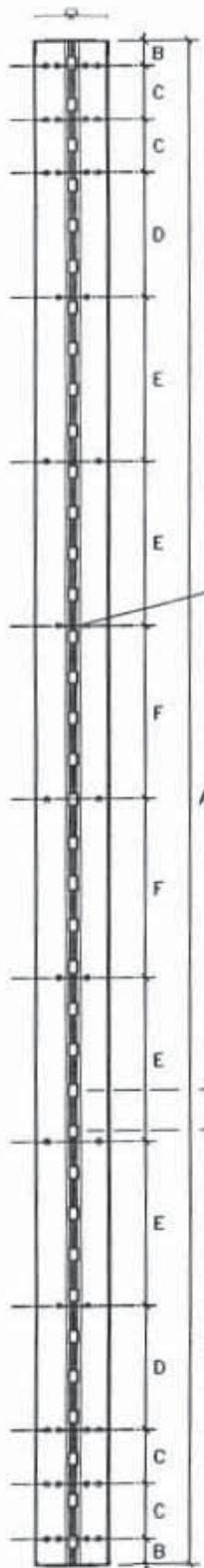
1.402"
[35.6mm] Ref.

End Of Hinge To First
Bearing, Both Ends.



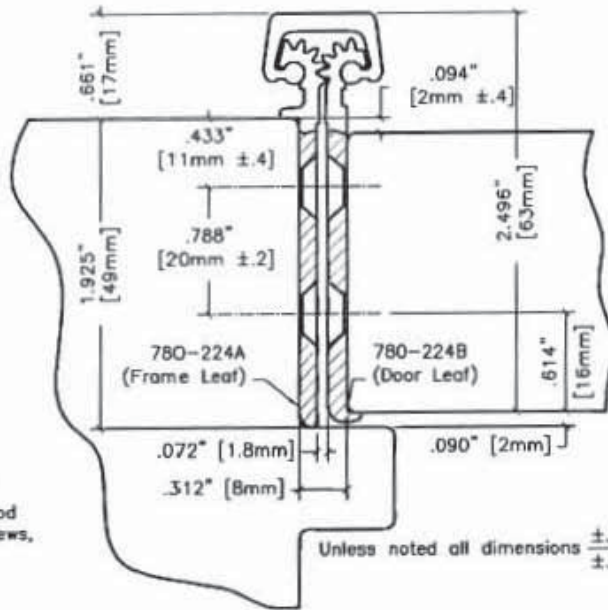
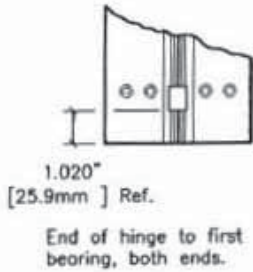
CAL-ROYAL PRODUCTS, INC

CRHD781120 83"



#12 x 82" F.H. countersunk wood or machine screws, (38 places).

37 bearings spaced equally @ 2.563" center to center.



Unless noted all dimensions ±.020" ±.5mm

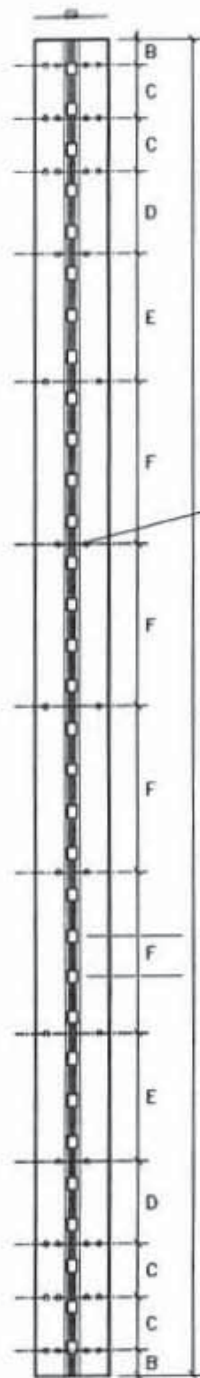
Vertical Hole Spacing

Non cumulative tolerances on hole to hole spacing.

	Metric (mm)	Decimal (in.)
A	2414.0 ±.25	95.039 ±.010
B	40.0 ±.25	1.575 ±.010
C	85.0 ±.20	3.346 ±.008
D	200.0 ±.20	7.874 ±.008
E	260.0 ±.20	10.236 ±.008
G	277.0 ±.20	10.906 ±.008

CAL-ROYAL PRODUCTS, INC

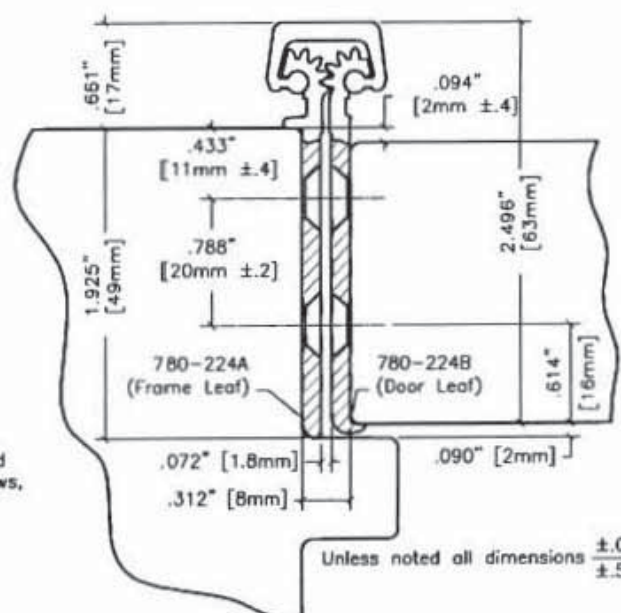
CRHD782240 95"



#12 x 82" F.H. countersunk wood or machine screws, (38 places).

32 bearings spaced equally ϕ 2.563" center to center.

1.402" [35.6mm] Ref.
End of hinge to first bearing, both ends.



Unless noted all dimensions $\frac{\pm .020"}{\pm .5mm}$

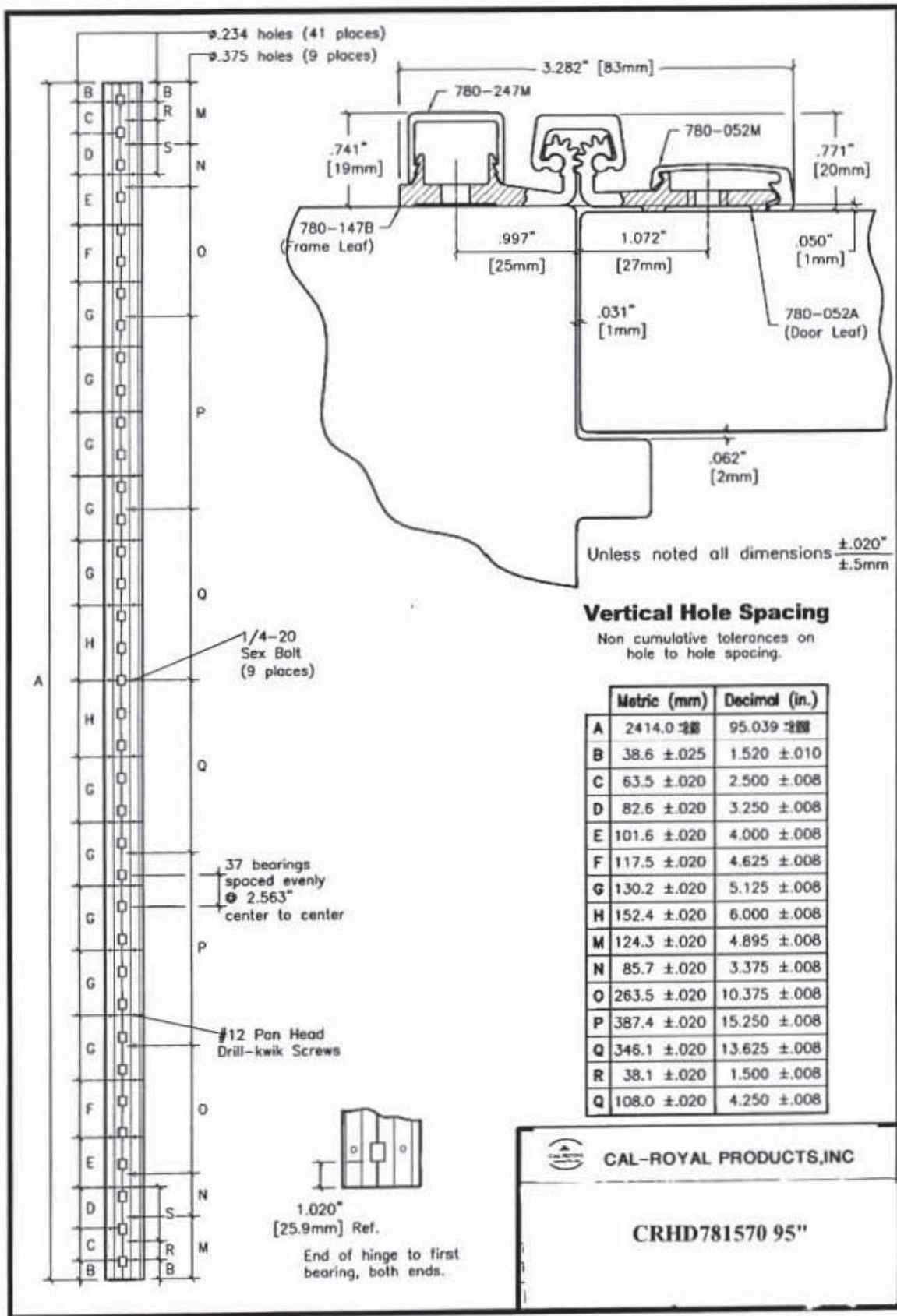
Vertical Hole Spacing

Non cumulative tolerances on hole to hole spacing.

	Metric (mm)	Decimal (in.)
A	2108.0 $\pm .25$	82.992 $\pm .008$
B	40.0 $\pm .25$	1.575 $\pm .010$
C	85.0 $\pm .20$	3.346 $\pm .008$
D	130.0 $\pm .20$	5.118 $\pm .008$
E	200.0 $\pm .20$	7.874 $\pm .008$
F	257.0 $\pm .20$	10.118 $\pm .008$

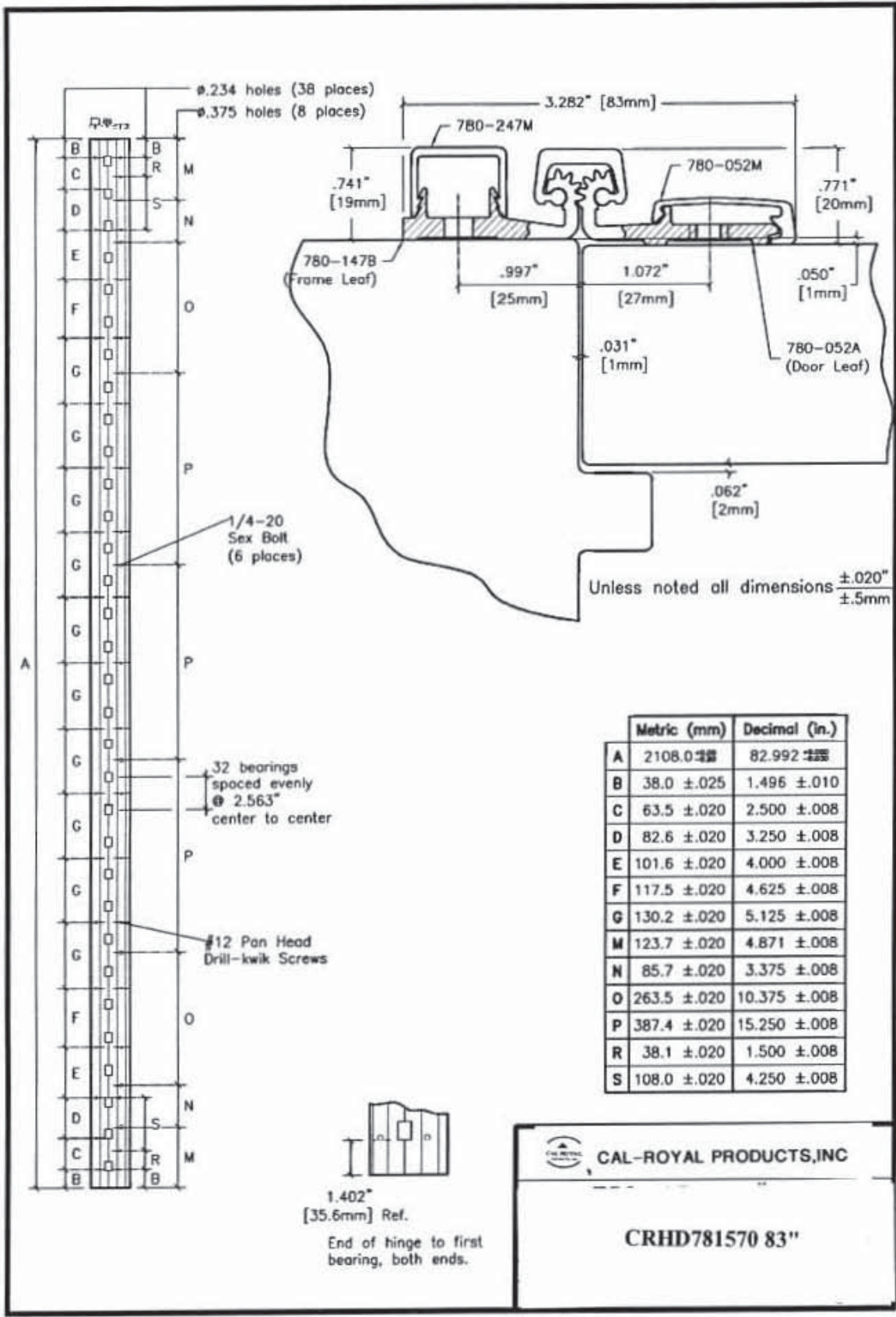
 CAL-ROYAL PRODUCTS, INC

CRHD782240 83"




CAL-ROYAL PRODUCTS, INC


CRHD781570 95"



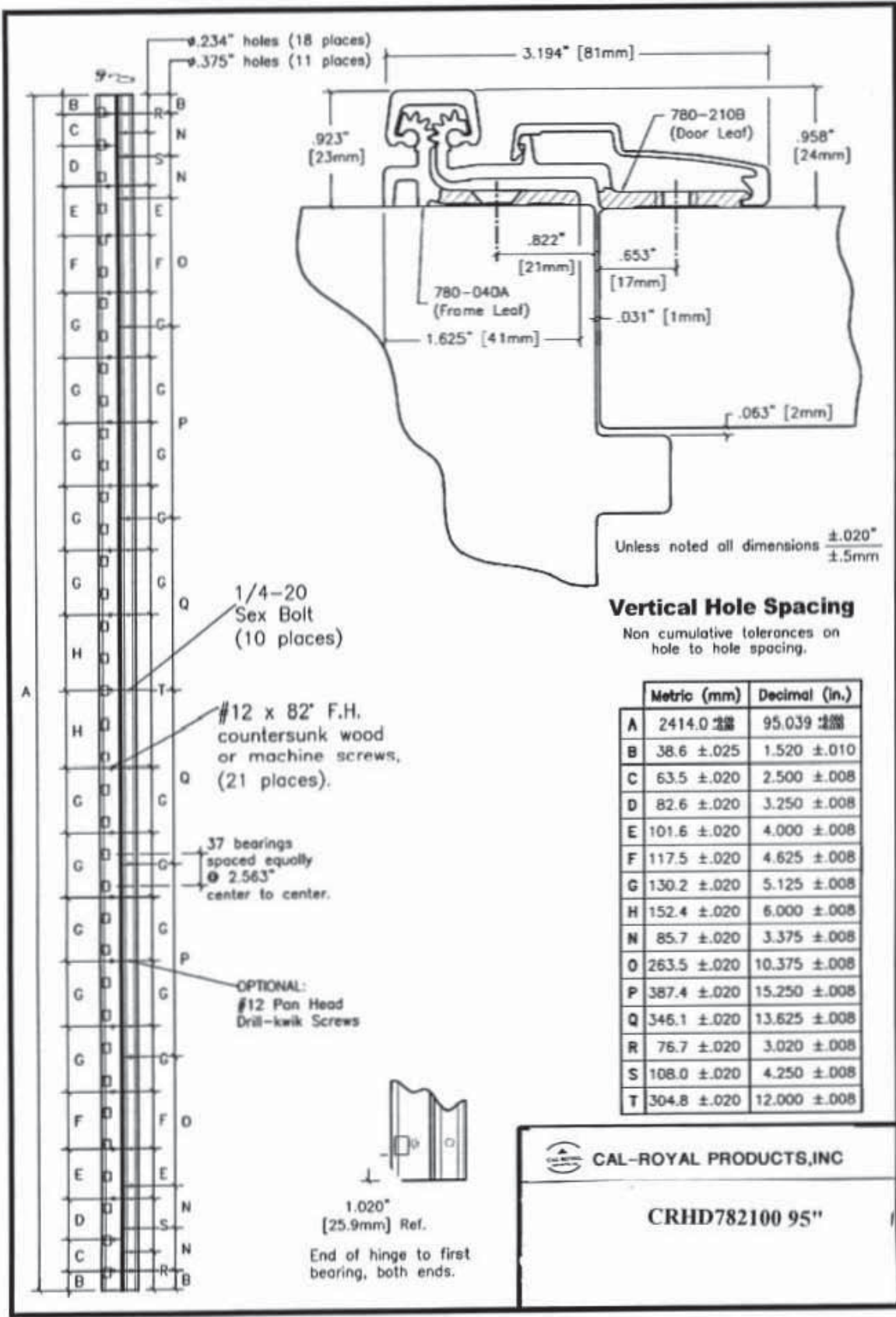
	Metric (mm)	Decimal (in.)
A	2108.0 $\pm .25$	82.992 $\pm .010$
B	38.0 $\pm .025$	1.496 $\pm .010$
C	63.5 $\pm .020$	2.500 $\pm .008$
D	82.6 $\pm .020$	3.250 $\pm .008$
E	101.6 $\pm .020$	4.000 $\pm .008$
F	117.5 $\pm .020$	4.625 $\pm .008$
G	130.2 $\pm .020$	5.125 $\pm .008$
M	123.7 $\pm .020$	4.871 $\pm .008$
N	85.7 $\pm .020$	3.375 $\pm .008$
O	263.5 $\pm .020$	10.375 $\pm .008$
P	387.4 $\pm .020$	15.250 $\pm .008$
R	38.1 $\pm .020$	1.500 $\pm .008$
S	108.0 $\pm .020$	4.250 $\pm .008$


CAL-ROYAL PRODUCTS, INC

CRHD781570 83"

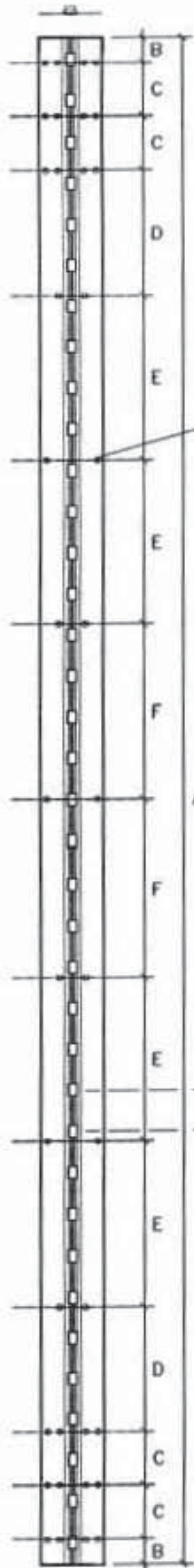


 1.402" [35.6mm] Ref.
 End of hinge to first bearing, both ends.



CAL-ROYAL PRODUCTS, INC

CRHD782100 95"

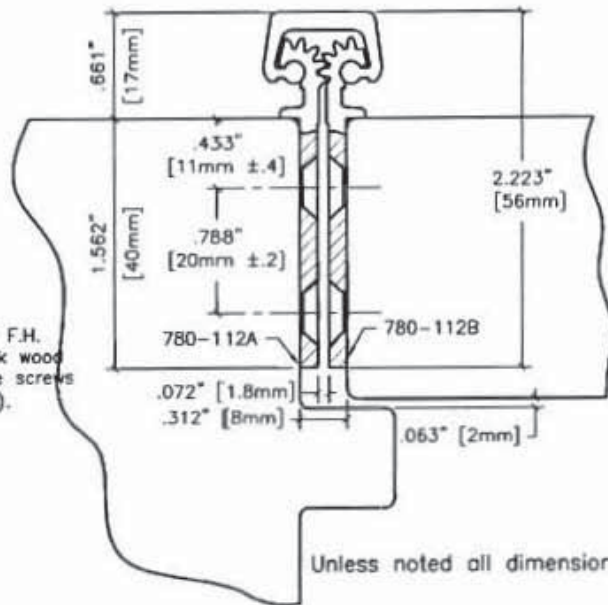


#12 x 82" F.H. countersunk wood or machine screws (38 places).

37 bearings spaced equally ϕ 2.563" center to center.

1.020" [25.9mm] Ref.

End of hinge to first bearing, both ends.



Unless noted all dimensions $\pm .020"$ $\pm .5mm$

Vertical Hole Spacing

Non cumulative tolerances on hole to hole spacing.

	Metric (mm)	Decimal (in.)
A	2414.0 ±.008	95.039 ±.008
B	40.0 ±.25	1.575 ±.010
C	85.0 ±.20	3.346 ±.008
D	200.0 ±.20	7.874 ±.008
E	260.0 ±.20	10.236 ±.008
G	277.0 ±.20	10.906 ±.008



CAL-ROYAL PRODUCTS, INC

CRHD781120 95"