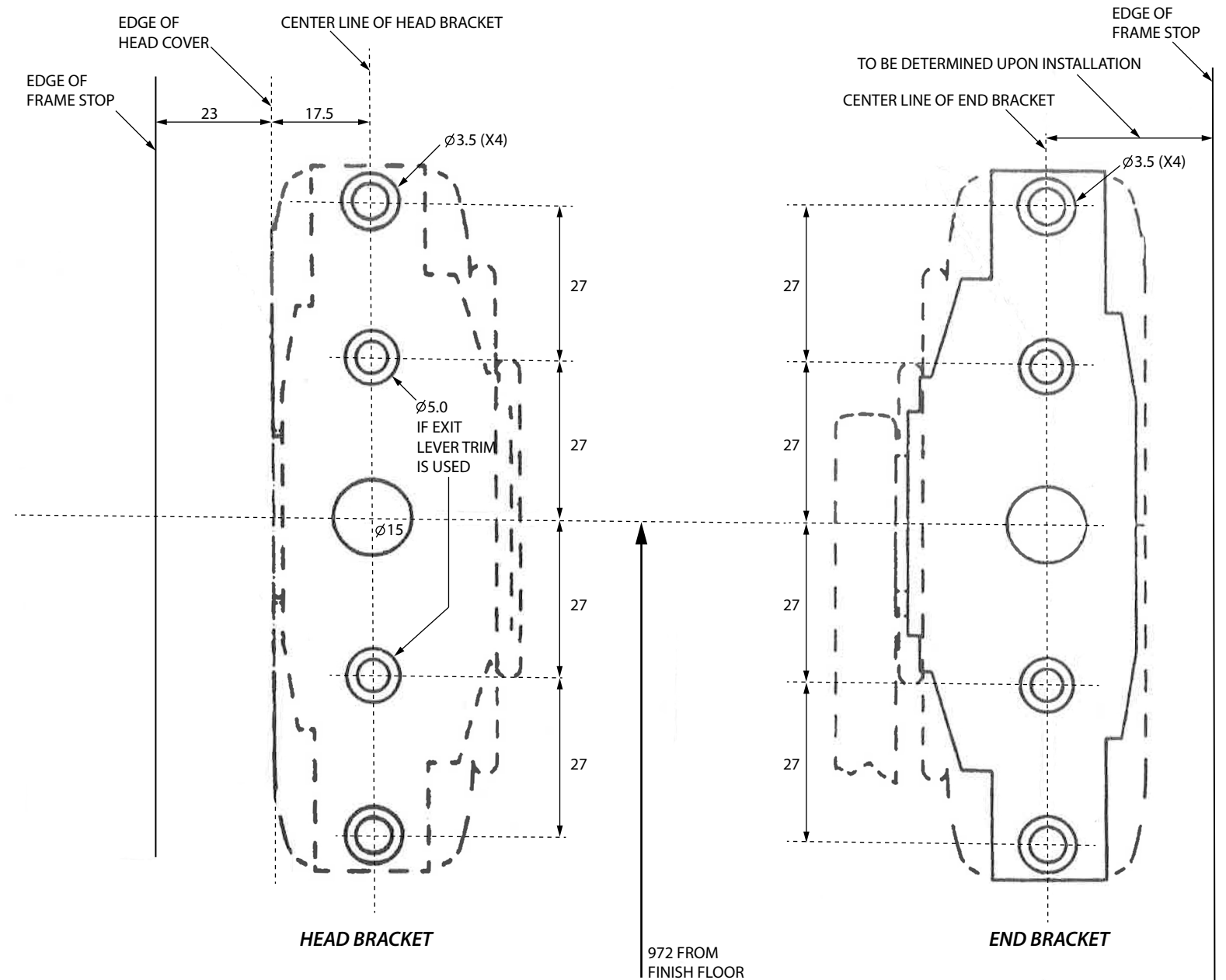




# INSTALLATION INSTRUCTIONS & TEMPLATE

## EU677 SERIES SURFACE VERTICAL ROD EXIT DEVICE

	<ol style="list-style-type: none"> <li>1 Install the Mounting Plates.</li> <li>2 Install the head bracket with the supplied screws.</li> <li>3 Install the handle as shown.</li> <li>4 Install the tail bracket.</li> <li>5 Install the top and bottom latches then install the rods. Fasten the head and tail bracket covers.</li> </ol>



NOTE: ALL DIMENSION IN MILLIMETER