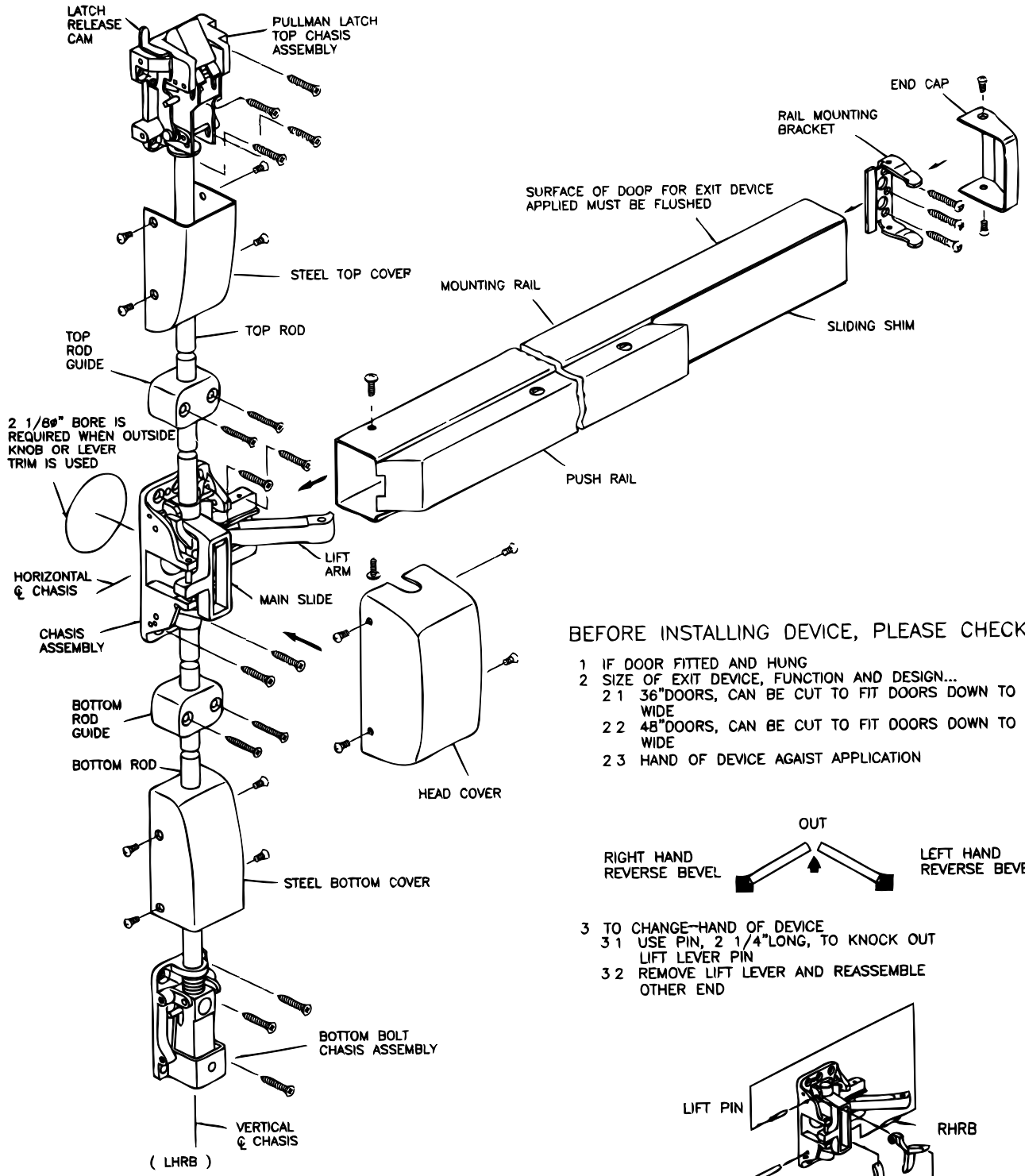
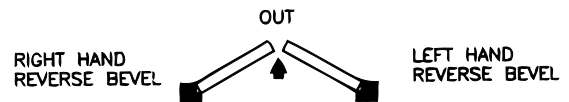


# INSTALLATION INSTRUCTION FOR LBRF2260V & LBRF2280V SERIES FIRE VERTICAL ROD EXIT DEVICE, Less Bottom Rod with Auxillary Fire Latch Assembly

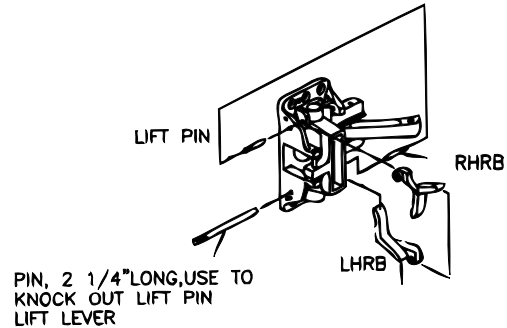


## BEFORE INSTALLING DEVICE, PLEASE CHECK:

- 1 IF DOOR FITTED AND HUNG
- 2 SIZE OF EXIT DEVICE, FUNCTION AND DESIGN...
  - 2.1 36" DOORS, CAN BE CUT TO FIT DOORS DOWN TO 30" WIDE
  - 2.2 48" DOORS, CAN BE CUT TO FIT DOORS DOWN TO 36" WIDE
- 2.3 HAND OF DEVICE AGAINST APPLICATION



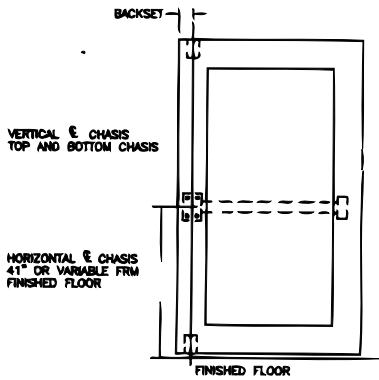
- 3 TO CHANGE-HAND OF DEVICE
  - 3.1 USE PIN, 2 1/4" LONG, TO KNOCK OUT LIFT LEVER PIN
  - 3.2 REMOVE LIFT LEVER AND REASSEMBLE OTHER END



# 1. MARK VERTICAL AND HORIZONTAL REFERENCE LINE ON DOOR

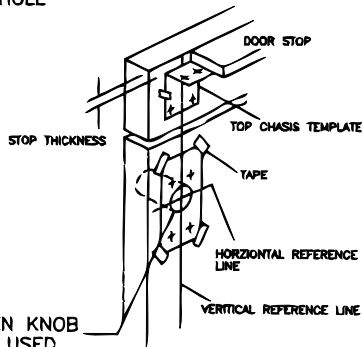
DETERMINE BACKSET TO LOCATE VERTICAL REFERENCE LINE

1. IF LOCK STILE IS 4-1/2" WIDE OR WIDER, BACKSET IS 2-3/4"
2. IF LOCK STILE IS LESS THAN 4-1/2" WIDE, BACKSET IS HALF OF THE EXPOSED WIDTH OF LOCK STILE.



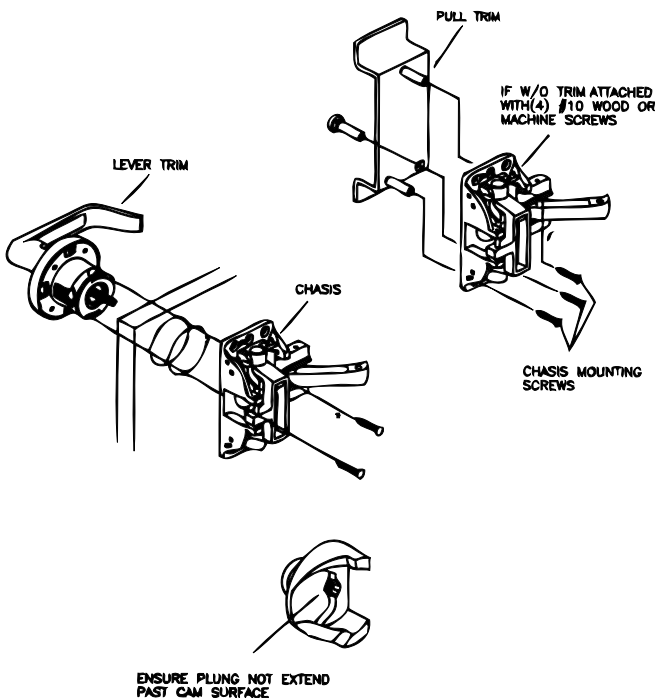
# 2. PREPARE DOOR

TAPE TEMPLATE ON INSIDE OF DOOR ALONG REFERENCE LINE  
SPOT AND DRILL HOLE

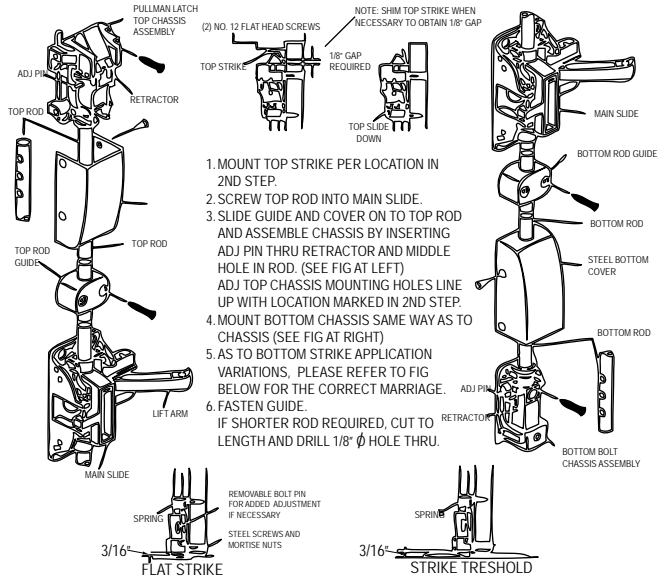


2 1/8" Ø BORE WHEN KNOB AND LEVER TRIM IS USED

# 3. APPLY TRIM+CHASSIS

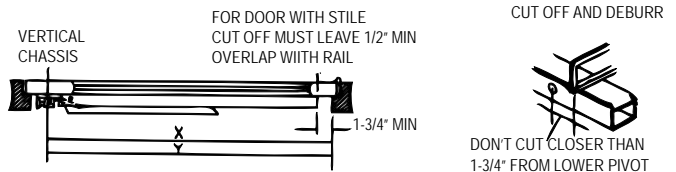


# 4. ATTACH TOP AND BOTTOM CHASSIS

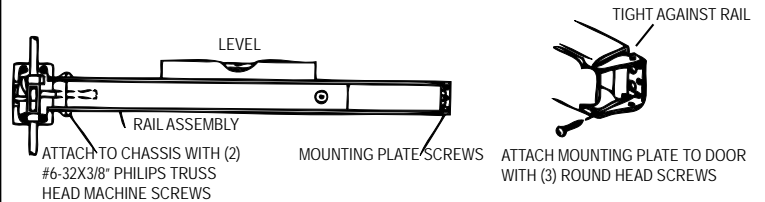


# 5. APPLY RAIL ASSEMBLY

- 1 CHECK THE SIZE OF DEVICE, IF CUTTING TO LENGTH IS REQUIRED
- 2 DETERMINE CUT OFF LENGTH "X" BY SUBTRACTING 1 3/4" FROM "Y" MARK CUT OFF POINT ON MOUNTING RAIL



- 3 DREPRESS ARM INTO RAIL OPENING AND SLIDE RAIL ONTO CHASSIS LEVEL RAIL AND FASSTEN CHASSIS AND MOUNTING PLATE



# 6. APPLY COVER

CHECK FINAL OPERATION OF DEVICE AND ADJUST THEN FASTEN COVERS

