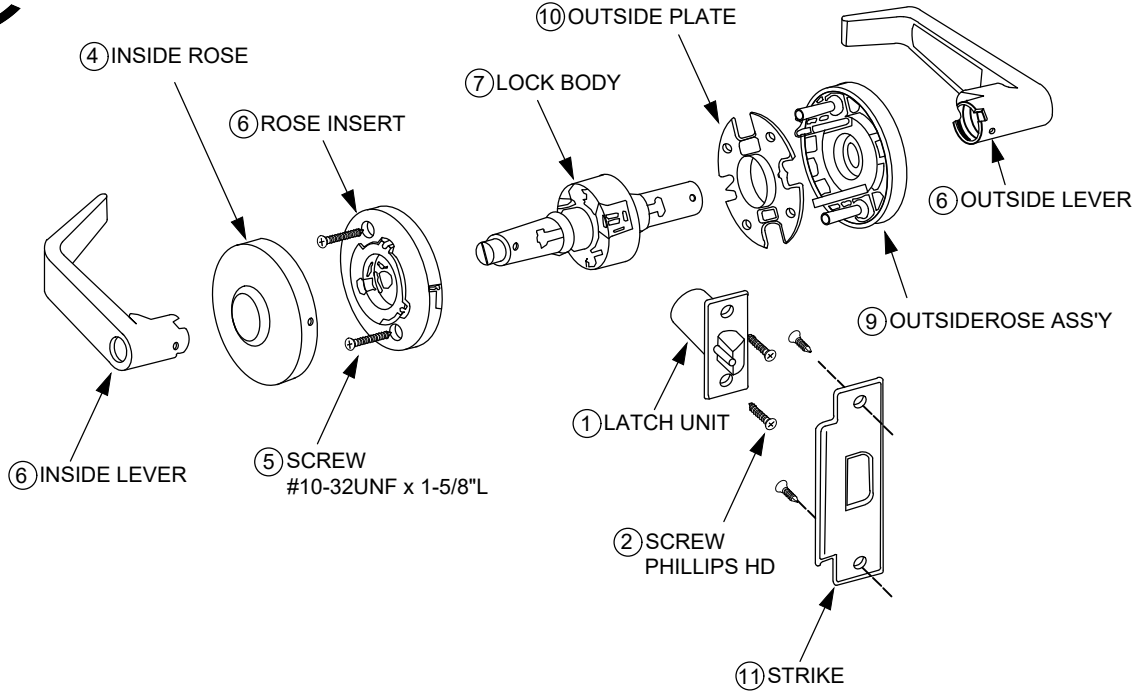




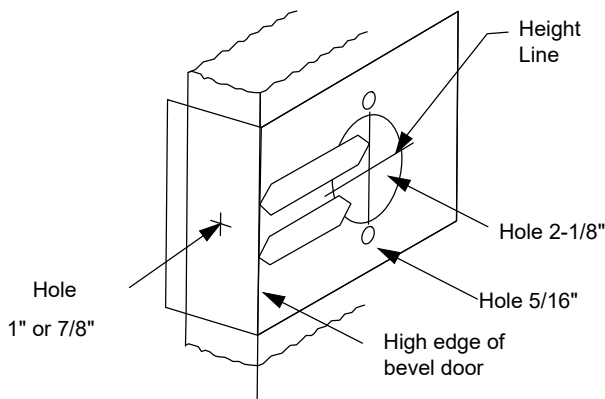
Installation Instructions for CGN Genesis Series



TOOLS REQUIRED
PUSH PIN (PROVIDED)
NO. 2 PHILLIPS SCREWDRIVER
1/8-INCH DRILL BIT
5/16-INCH DRILL BIT

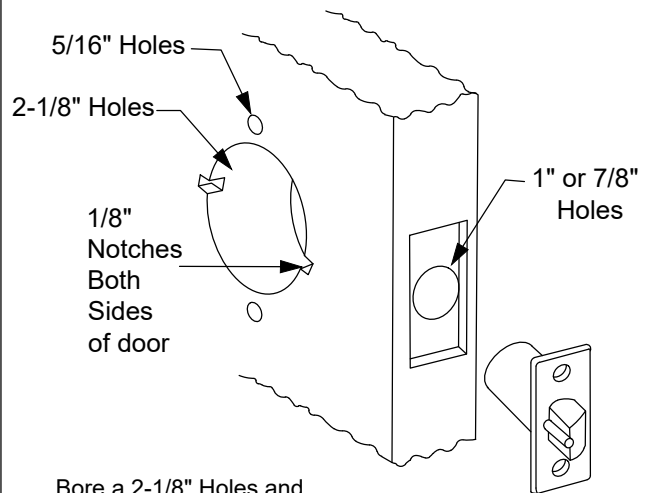
THIS LOCK IS FACTORY-PACKED 1-3/4" THICK DOOR

1. MARK DOOR



Mark height line on edge and face of door. Detach stub of template and mark center of door thickness on heightline. Fold template at proper marking for bevel of door (high or low bevel of flat). Position center line of template on height line. Hold in place and mark center. Point for 2-1/8" hole. And then the 1" or 7/8" hole. Also mark for 5/16" holes for mounting screws.

2. BORE HOLES



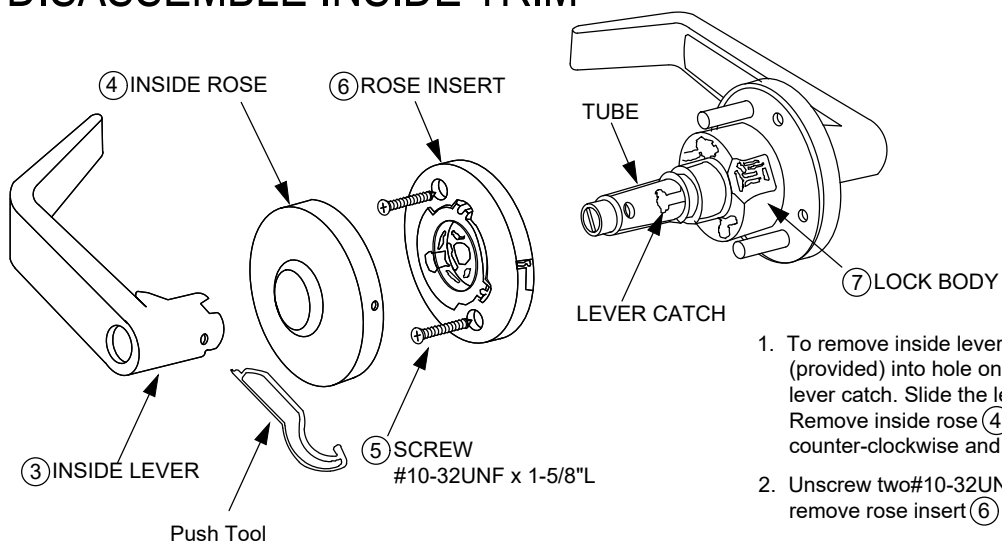
Bore a 2-1/8" Holes and 5/16" holes. Bore holes from both sides of door to avoid splintering wood.

NOTE: We recommend using a drill guide to ensure straight holes. Bore a 1" or 7/8" hole straight into door edge to intersect with center of 2-1/8" hole. Use latch front faceplate to pattern for cutout. Front should fit flush with door edge. Install latch with screws provided.

(Wood door applications)
For proper alignment of lock chassis and lever, cut out notched for anchor plate lugs from both sides of door on horizontal height line. Mortise for anchor plates on both sides of door (see template).

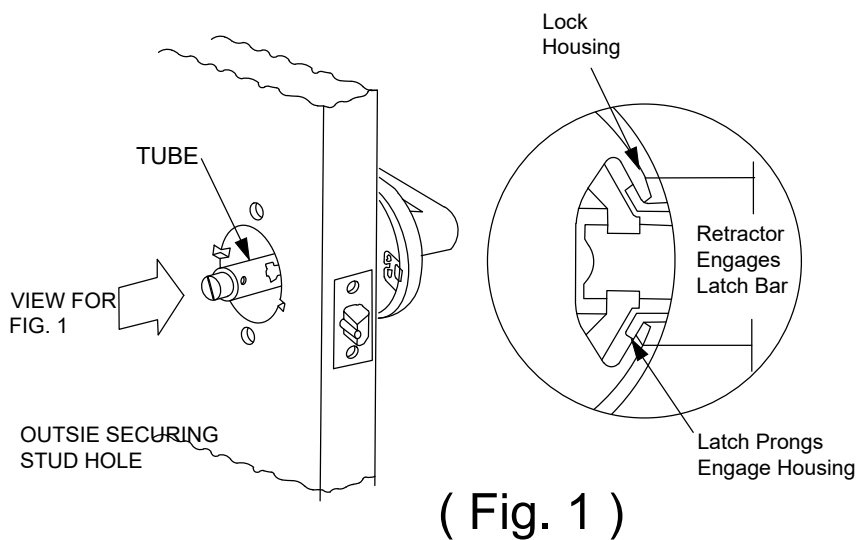
NOTE: Width of notches should not exceed 1/8" for snug of anchors.

3. DISASSEMBLE INSIDE TRIM



1. To remove inside lever (3) Insert push tool (provided) into hole on lever to depress the lever catch. Slide the lever from the tube. Remove inside rose (4) by slightly twisting counter-clockwise and pulling off.
2. Unscrew two #10-32UNF x 1-5/8 L (5) screw and remove rose insert (6)

4. INSTALL OUTSIDE UNIT



The lock body must engage the latch unit prongs as shown. The lock body retractor must engage the latch unit tail piece. Door must be open when installing the locket with guarded latch unit.

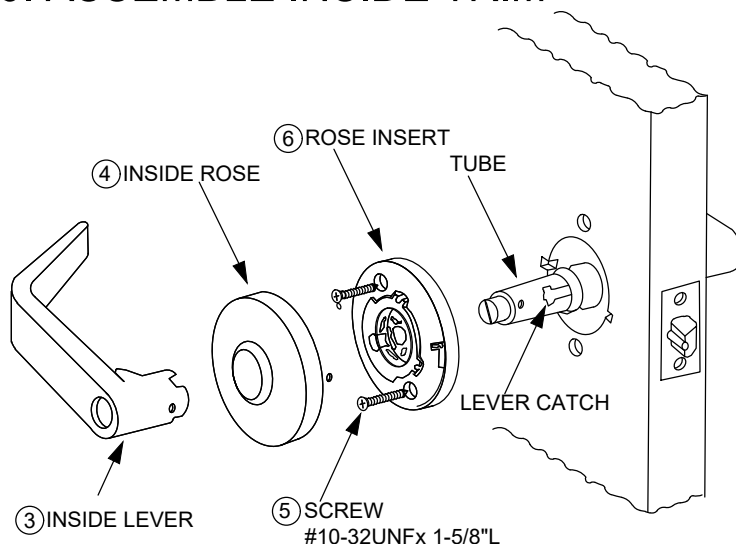
NOTE :

1. Be sure latch unit tail piece is centered about lock body retractor. Adjust it if necessary by outside plate.
2. For lock with outside securing stud type, slide two outside securing stud into prepared holes on door.

CAUTION :

DO NOT ATTEMPT TO MOUNT LOCK UNIT WITH DOOR CLOSED.

5. ASSEMBLE INSIDE TRIM



NOTE :

USE WHITE LONGER SCREWS FOR DOOR THICKER THAN 1-5/8".

1. Position the screw holes vertically with winder notch at inside diameter in line with lever latch. Then slide onto tube and align rose screw holes with # 10-32UNF x 1-5/8"L screw (5). (See note)
2. Place inside rose (4) onto inside rose insert (6) aligning two lances with recesses in rose insert (6) and turn clockwise to lock as firmly as possible
3. Slide inside lever (3) onto tube. Make certain lever catch on tube is engaged with lever