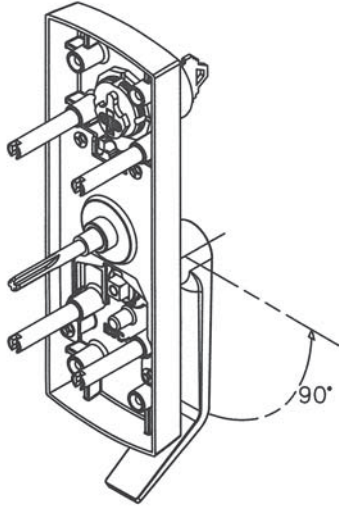


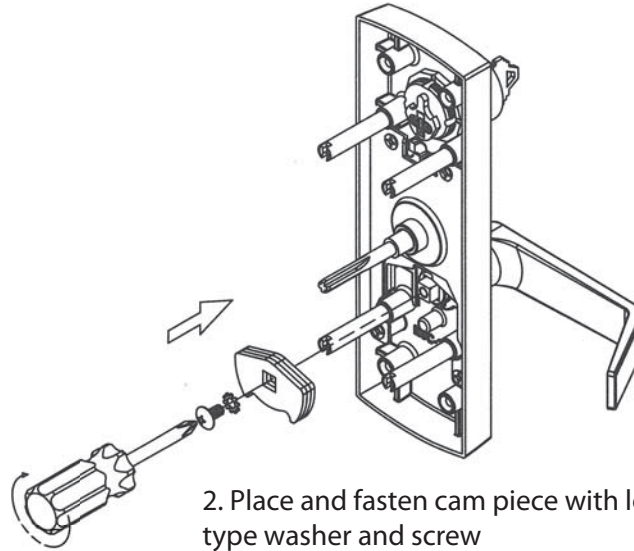
HOW TO CHANGE HANDING

2200 SERIES NESL LEVER TRIM

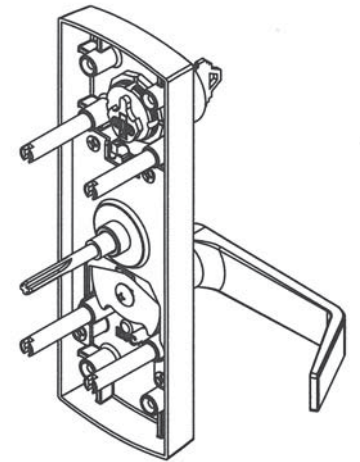
RHR to LHR:



1. Rotate lever to LHR positioned at 90

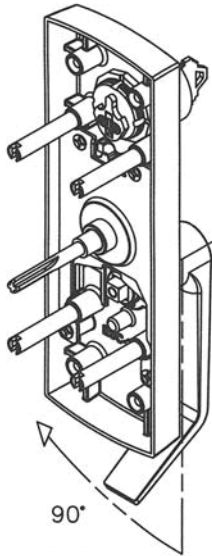


2. Place and fasten cam piece with lock type washer and screw

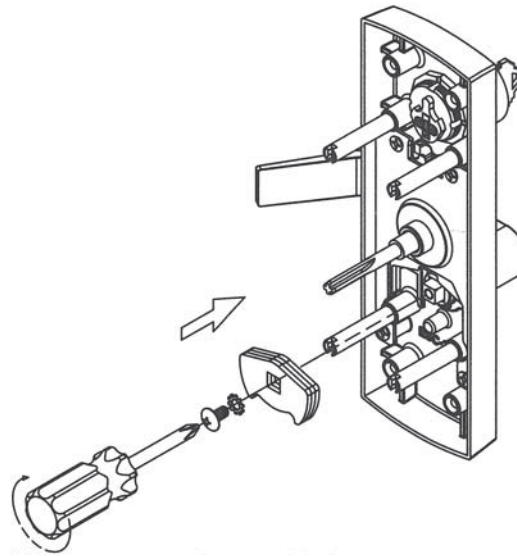


3. Check if lever rotates freely.

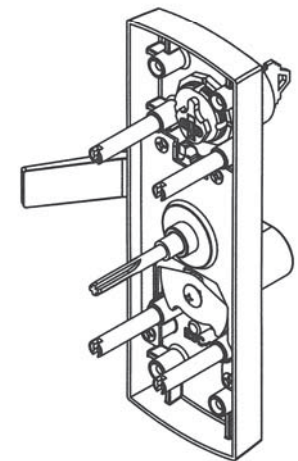
LHR to RHR:



1. Rotate lever to RHR positioned at 90



2. Place and fasten cam piece with lock type washer and screw



3. Check if lever rotates freely.