

ELDVBEL150 DIGITAL DOOR VIEWER MANUAL

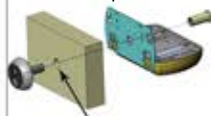


① Attention:

1. Please read manual before installing.
2. DO NOT disassemble any parts.
3. Dispose used batteries in trash.
4. Choose correct length of brass tube depending on door thickness.
1-3/8" ~ 2-3/8" (35-60mm)
1-3/8" ~ 3-11/32" (60-85mm)
5. If the doorbell works, but no image on screen, replace with new batteries.
6. Needs 3pcs regular AA alkaline batteries.

②

Door Preparation



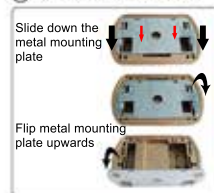
For new door installation, bore 1/2" (14mm) diameter hole, or use existing hole [up to 1-1/5" (30mm) dia]

③

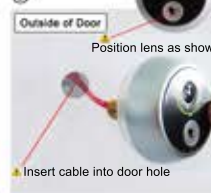


Parts included in the Package

④ Installation Instructions



⑤



⑥



⑦



⑧



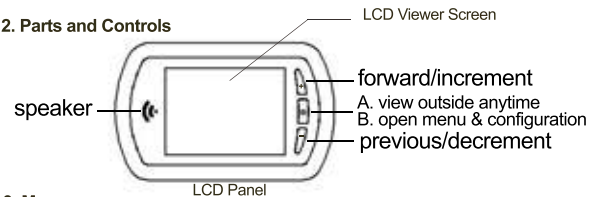
⑨



1. Features

LCD Viewer Screen	3.5" TFT, 320x240 resolution
Battery	3xAA batteries
Supported Existing Door Bores	Dia. 1/2" ~ 1-1/8" (14mm ~ 29mm)
Camera Resolution	0.3 Mega pixels
Dimensions (LCD Panel)	L5.5"xH3.5"xD1.0" (140xH90xD22mm)
Net Wt.	8.5 oz (240g)
Viewing Angle	150 degrees
Operating Temperature	14°F ~ +122°F (-10°C ~ +50°C)
Storage Temperature	14°F ~ +122°F (-10°C ~ +50°C)
Infrared camera with night mode function	
Takes photo on each doorbell press, and stores it with date and time	
Maximum 100 photos stored	

2. Parts and Controls



3. Menu

Brightness	052
Contrast	050
Chrome	052
Language	< English >
Date	2012-11-06
Time	00:27:40
Delete All	
Exit	