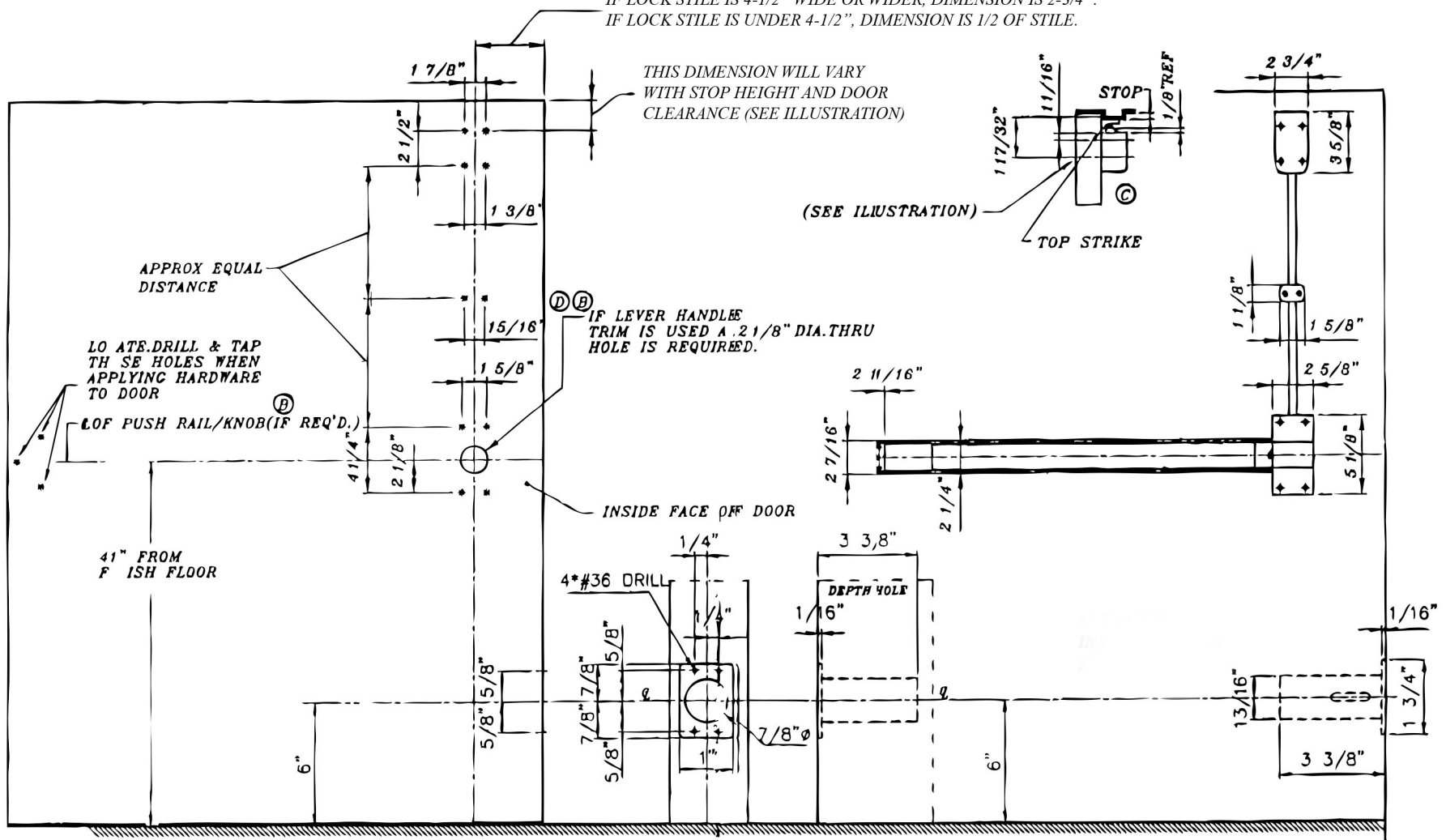


IF LOCK STILE IS 4-1/2" WIDE OR WIDER, DIMENSION IS 2-3/4".  
 IF LOCK STILE IS UNDER 4-1/2", DIMENSION IS 1/2 OF STILE.



1. SURFACE OF DOOR WHERE EXIT DEVICE IS TO BE APPLIED MUST BE FLUSHED
2. SEE MASTER SHEET FOR AREAS REQUIRING REINFORCEMENTS
3. SEE STRIKE TEMPLATE FOR TOP AND BOTTOM STRIKES
4. WE RECOMMEND THAT ALL TAPPED HOLES BE DRILLED AND TAPPED IN FIELD
5. TOLERANCE ON ALL DIMENSIONS ± 1/64"

	<p><b>LBRF2260 LESS BOTTOM ROD FIRE-RATED EXIT DEVICE</b></p>
<p><b>LBRF2260</b></p>	<p>VERSION DATE <b>APR-16</b> 2012 CAL ROYAL PRODUCTS, INC.</p>