



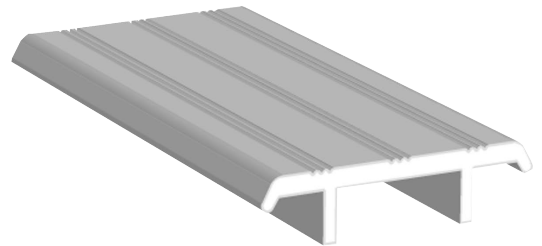
# PART# CR3361

FINISH: MILL FINISH ALUMINUM & DARK BRONZE ANODIZED ALUMINUM

**7/16" (11.1mm) CARPET / SPECIAL PURPOSE THRESHOLD**



**7/16" H x 1-3/4" W**  
11.1 mm x 44.5 mm



FASTENERS : #10 x 1-1/2" WS

## **INSTALLATION INSTRUCTIONS**

1. Measure width at the bottom of the frame and cut the threshold to exact full width of the opening.
2. If necessary trim and notch the threshold ends to accommodate the side jamb stops.
3. Mark and drill pilot holes through the pre-drilled holes in the threshold and fasten with screws provided.
4. Seal both ends and along the sides of the threshold.
5. Operate the door multiple times to ensure proper adjustment so as not to prevent the door from self-closing and latching.



Meets UL10B, UL10C and  
UBC 7-2 (1997) Category J



3 HR POSITIVE  
PRESSURE

*MATERIAL FOR USE IN LISTED STEEL FRAMES AND CLASSIFIED HOLLOW METAL STEEL COMPOSITE TYPE FIRE DOORS ARE RATED UP TO AND INCLUDING 3 HOURS, WOOD COMPOSITE TYPE FIRE DOORS ARE RATED UP TO AND INCLUDING 1-1/2 HOURS, AND WOOD CORE FIRE DOORS ARE RATED 20 MINUTES WITHOUT HOSE STREAM.*