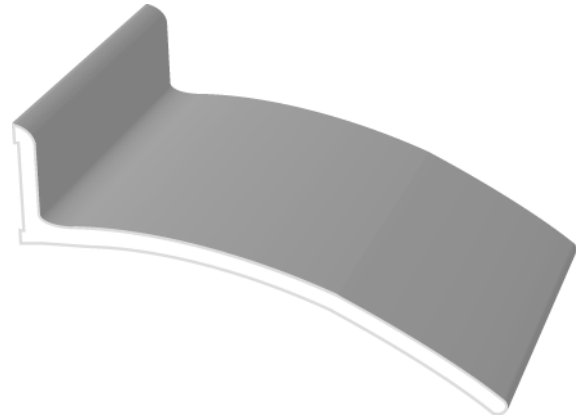
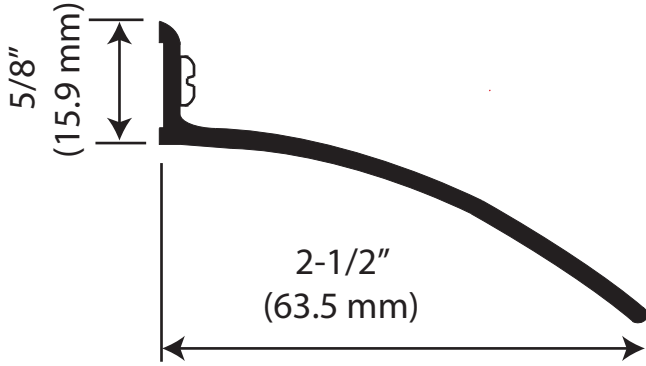




# ITEM # CR4462

FINISH: MILL ALUMINUM and DURO

## 2-1/2" (63.5 mm) DOOR TOP WEATHERSTRIP



FASTENER : # 6 x 5/8" PHSMS

### INSTALLATION INSTRUCTIONS

1. Center entire length on frame over door.
2. Fasten using screws provided.
3. Ensure top of door clears rain drip when opened or closed.
4. Suggested length should be 4" longer than width of door.



Meets UL10B, UL10C and  
UBC 7-2 (1997) Category J



3 HR POSITIVE  
PRESSURE

MATERIAL FOR USE IN LISTED STEEL FRAMES AND CLASSIFIED HOLLOW METAL STEEL COMPOSITE TYPE FIRE DOORS ARE RATED UP TO AND INCLUDING 3 HOURS, WOOD COMPOSITE TYPE FIRE DOORS ARE RATED UP TO AND INCLUDING 1-1/2 HOURS, AND WOOD CORE FIRE DOORS ARE RATED 20 MINUTES WITHOUT HOSE STREAM.