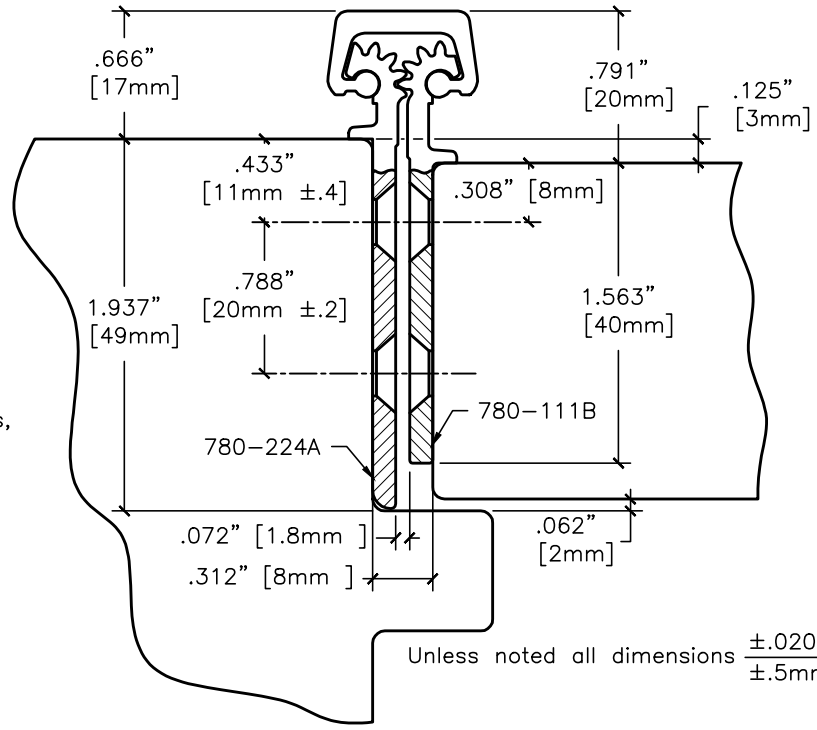


#12 x 82' F.H. countersunk wood or machine screws, (38 places).

37 bearings spaced equally @ 2.563" center to center.

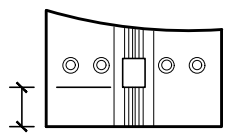


Unless noted all dimensions $\pm .020"$
 $\pm .5mm$

Vertical Hole Spacing

Non cumulative tolerances on hole to hole spacing.

	Metric (mm)	Decimal (in.)
A	2414.0 $\pm .000$	95.039 $\pm .000$
B	40.0 $\pm .25$	1.575 $\pm .010$
C	85.0 $\pm .20$	3.346 $\pm .008$
D	200.0 $\pm .20$	7.874 $\pm .008$
E	260.0 $\pm .20$	10.236 $\pm .008$
G	277.0 $\pm .20$	10.906 $\pm .008$



1.020" [25.9mm] Ref.

End of hinge to first bearing, both ends.

The illustration and technical description in this cut sheet is current as of the date in version date on the right. Cal-Royal Product reserves the right to, and may, on occasions, make changes and/or improvements in designs and dimensions without prior notice.

8605 Flotilla Street
City of Commerce
CA 90040 USA
Tel # (323) 888-6601
FAX # (323) 888-6699
WEB SITE:
CAL-ROYAL.COM
Email: sales@cal-royal.com

ITEM NO.	DESCRIPTION
CRHD781110	CONCEALED LEAF 95" HEAVY DUTY CONTINUOUS GEARED HINGE

NOT TO SCALE	UNIT	Prepared By:	DATE	DWG. NO.
PAGE 1 of 1	PRIMARY DIMENSION SHOWN IN INCHES, DIMENSIONS IN () ARE MM	BBT / ADG AED/ CVL	10/27/2023	HGT-3044-10/23-1of1
				Ver. 1.0 Rev.