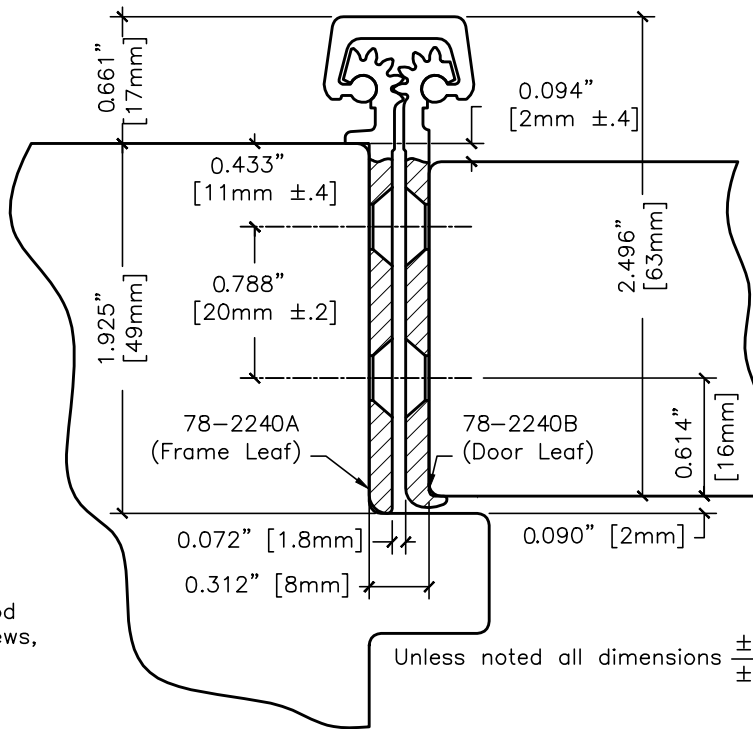


#12 x 82" F.H. countersunk wood or machine screws, (38 places).

37 bearings spaced equally @ 2.563" center to center.

1.020" [25.9mm] Ref.

End of hinge to first bearing, both ends.



Unless noted all dimensions  $\frac{\pm 0.020"}{\pm 0.5mm}$

### Vertical Hole Spacing

Non cumulative tolerances on hole to hole spacing.

	Metric (mm)	Decimal (in.)
A	2414.0 $\pm 0.08$	95.039 $\pm 0.003$
B	40.0 $\pm 0.25$	1.575 $\pm 0.010$
C	85.0 $\pm 0.20$	3.346 $\pm 0.008$
D	200.0 $\pm 0.20$	7.874 $\pm 0.008$
E	260.0 $\pm 0.20$	10.236 $\pm 0.008$
G	277.0 $\pm 0.20$	10.906 $\pm 0.008$

The illustration and technical description in this cut sheet is current as of the date in version date on the right. Cal-Royal Product reserves the right to, and may, on occasions, make changes and/or improvements in designs and dimensions without prior notice.