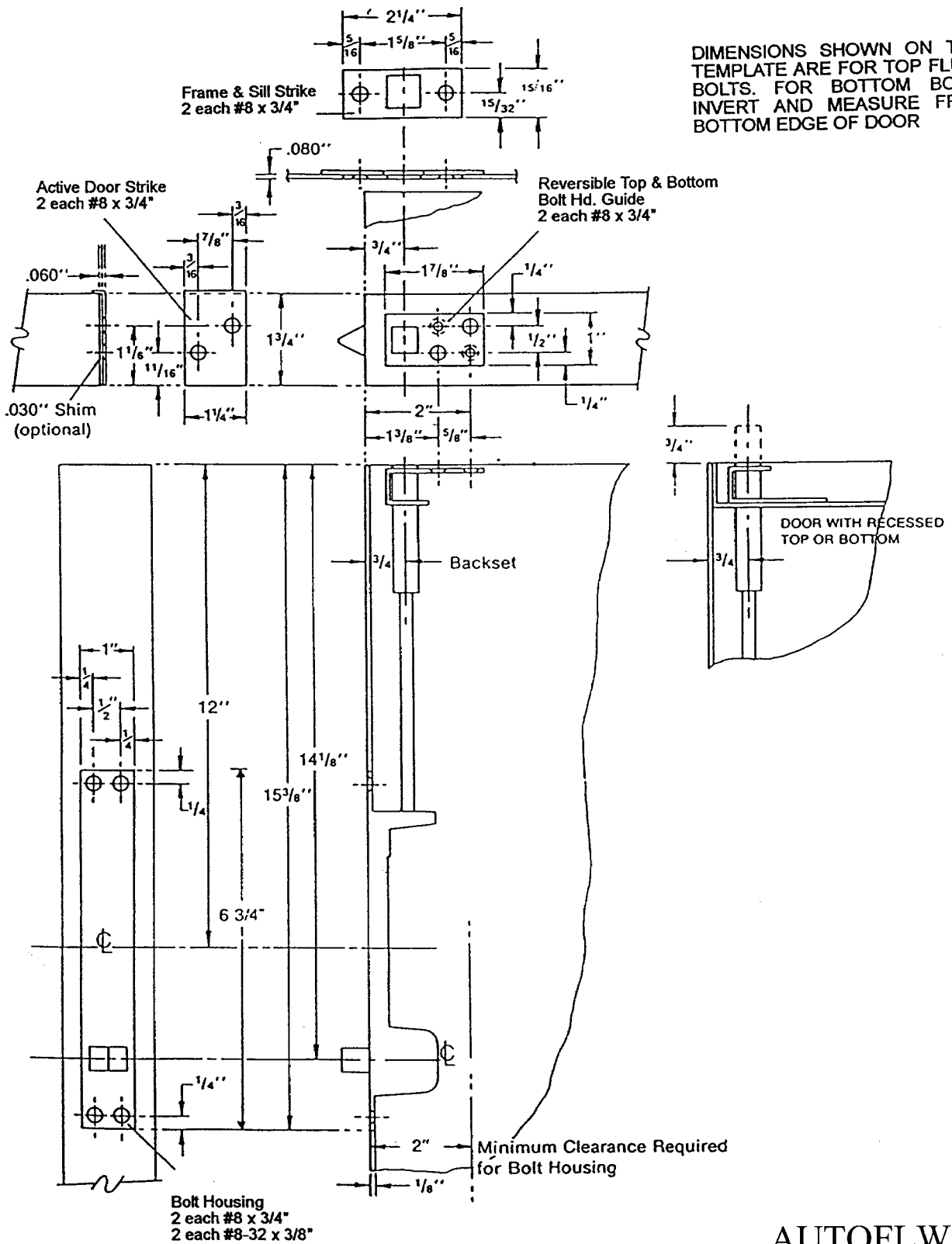


AUTOMATIC FLUSH BOLTS (FOR METAL DOOR APPLICATION)

DIMENSIONS SHOWN ON THIS TEMPLATE ARE FOR TOP FLUSH BOLTS. FOR BOTTOM BOLTS INVERT AND MEASURE FROM BOTTOM EDGE OF DOOR



AUTOFLW-22

SCREW DETAILS:

- Bolt Housing : 2 - #8 x 3/4" flat head sheet metal/machine screws
- : 2 - #8-32 x 3/8" flat head sheet metal screws
- Frame & Sill Strike : 2 - #8 x 3/4" flat head sheet metal/machine screws
- Reversible Bolt Guide : 2 - #8 x 3/4" flat head sheet metal/machine screws
- Active Door Strike : 2 - #8 x 3/4" flat head sheet metal/machine screws