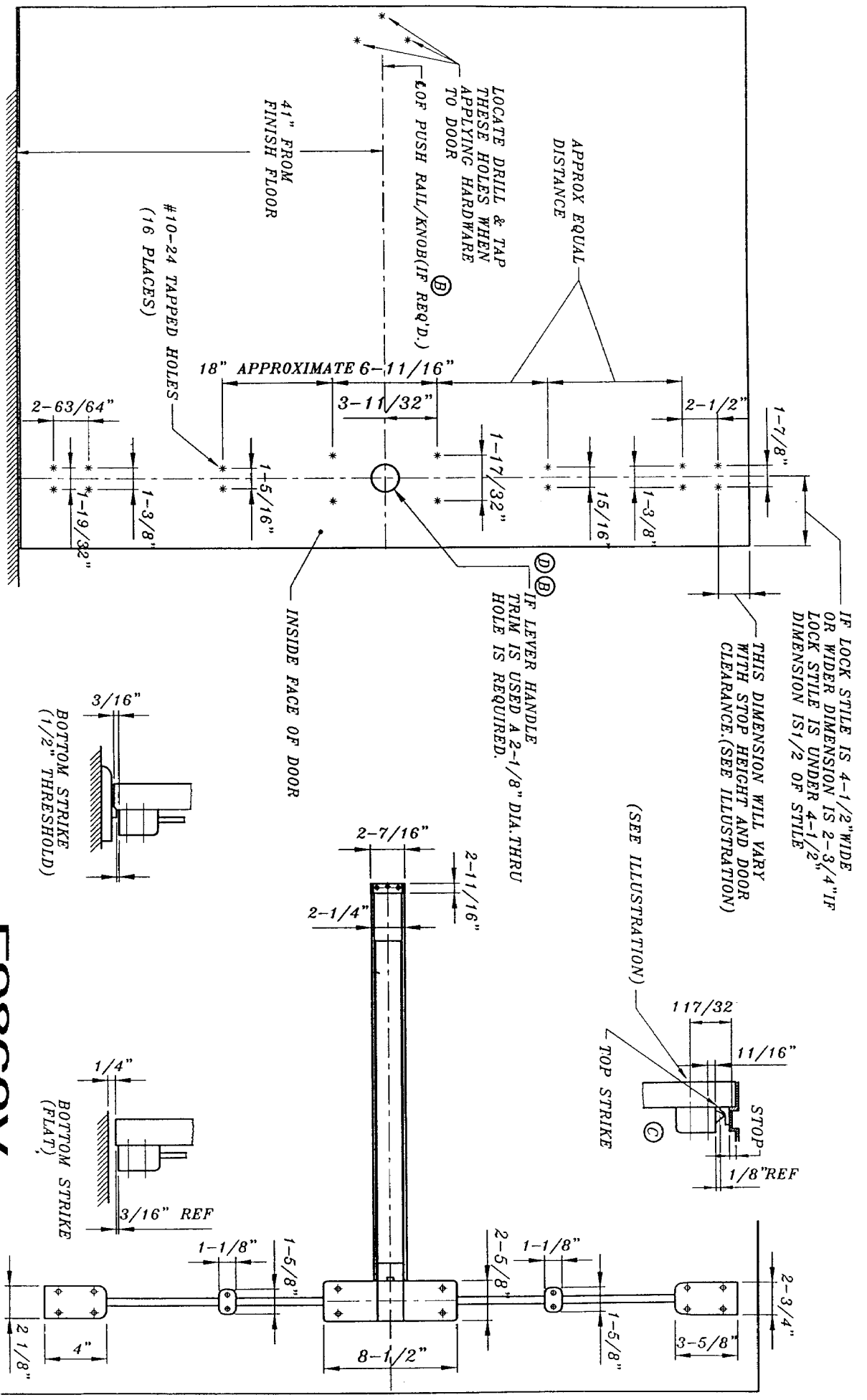


1. TOLERANCE ON ALL DIMENSIONS $\pm 1/64$ "
2. WE RECOMMEND THAT ALL TAPPED HOLES BE DRILLED & TAPPED IN FIELD
3. SEE STRIKE TEMPLATE FOR TOP AND BOTTOM STRIKES.
4. SEE MASTER SHEET FOR AREAS REQUIRING REINFORCEMENTS
5. SURFACE OF DOOR WHERE EXIT DEVICE IS TO BE APPLIED MUST BE FLUSH



TEMPLATE: FIRE VERTICAL ROD EXIT DEVICE	
BM	01.05.04
REV	FC-9100