

CAL-ROYAL

PRODUCTS, INC
COMMERCE, CALIFORNIA

Model: 400 Series

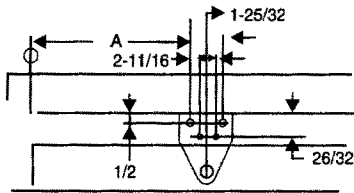
Size: 2,3,4,

Non Hold-Open

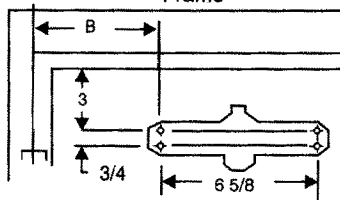
Installation Instructions for PARALLEL ARM(PUSH SIDE) Mounting

THIS TEMPLATE COVERS PARALLEL ARM INSTALLATIONS TO 180° OPENINGS.

Parallel bracket accessory, required and is included.

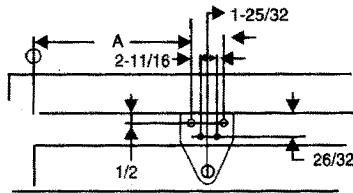


Frame

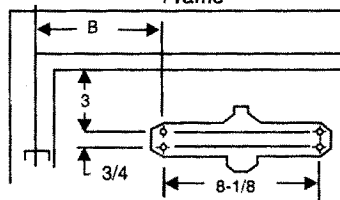


Hinge
or
pivot

SIZE:2
Model: 420-P

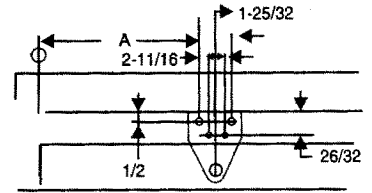


Frame

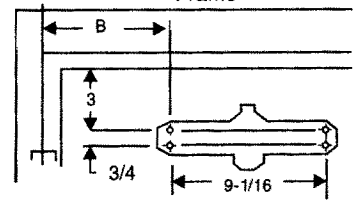


Hinge
or
pivot

SIZE:3
Model: 430-P
440-P



Frame



Hinge
or
pivot

SIZE:4
Model: 440F-P

- Left hand door shown
- Right hand door opposite
- Dimensions are in inches
- Drawing not to scale

OPENING	DIM.A 420-P	DIM.B 420-P	DIM.A 430-P 440-P 440F-P	DIM.B 430-P 440-P	DIM.B 440F-P
TO -120°	5-7/8	4-11/16	7-7/8	6-11/16	5-29/32
120° -180°	4-11/16	3-1/2	6-11/16	5-1/2	4-23/32

INSTALLATION INSTRUCTIONS

1. Select door opening angle and use dimensions shown above, mark four (4) holes on door for door closer and four (4) holes under side of frame for parallel bracket.
2. Drill pilot holes in door and frame for #14 all-purpose screws or drill and tap for 1/4-20 machine screws.
3. Mount closer on door using screws provided. SPEED ADJUSTING VALVE MUST BE POSITIONED AWAY FROM HINGE EDGE.
4. Install Parallel Arm Bracket frame using screws provided.
5. Using a wrench on the square shaft at bottom of closer, rotate shaft approximately 4/5 toward hinge edge of door. Hold and place main arm of shaft on top of closer at Proper index mark as illustrated. FOR LEFT HAND DOOR "L" (illustration "A"). FOR RIGHT HAND DOOR "R" (illustration "B") Tighten arm screw with lockwasher securely.
6. Remove arm shoe from forearm and discard. Install ROD end of forearm to bracket using screw/washer assembly provided.
7. Adjust length of adjustable forearm so that adjustable forearm is parallel to frame.
8. Adjust closing speed of door, following instructions as shown page 1.

Typical Installation

