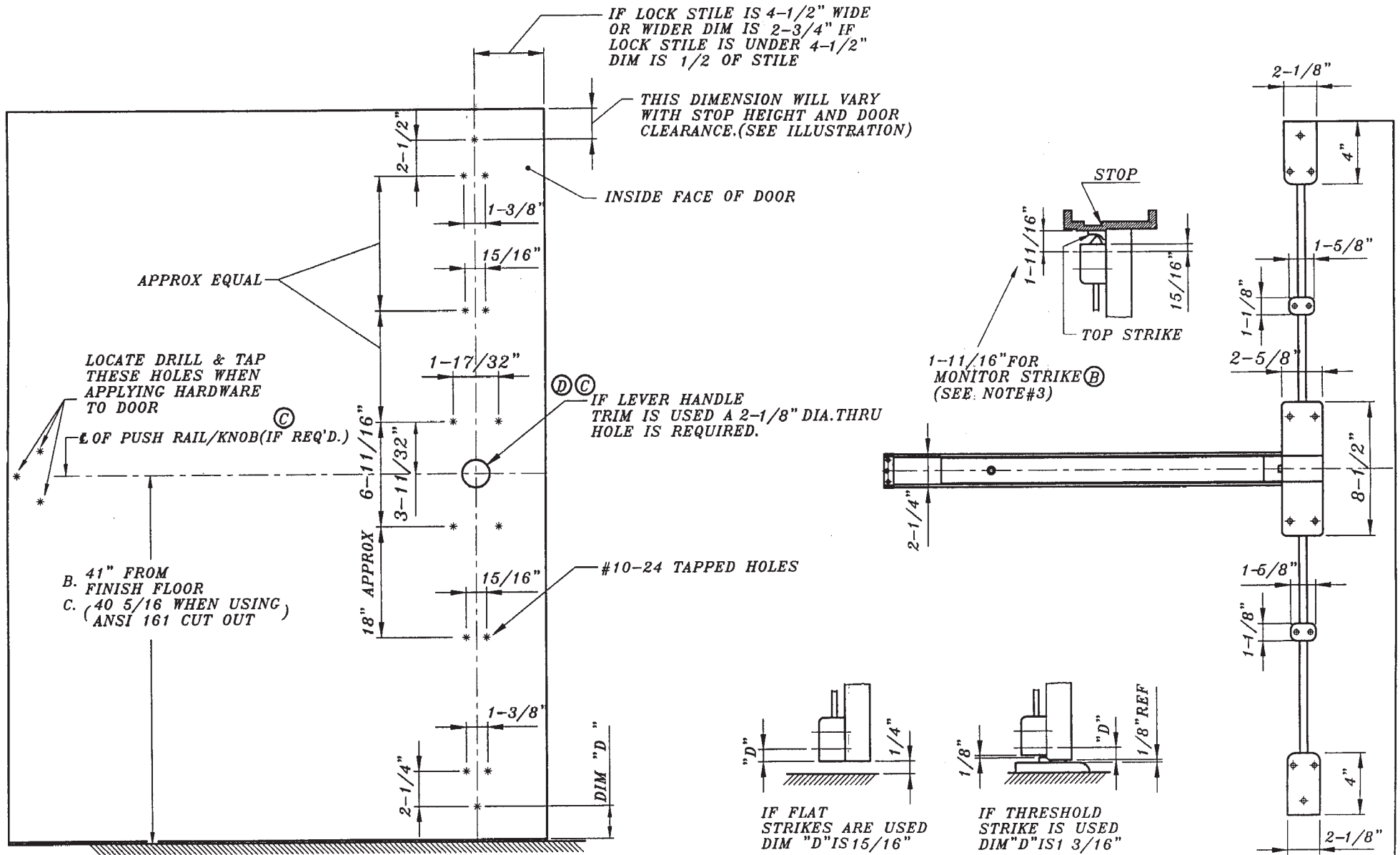


# 9860V VERTICAL ROD EXIT DEVICE TEMPLATE



5. SURFACE OF DOOR WHERE EXIT DEVICE IS TO BE APPLIED MUST BE FLUSH
4. SEE MASTER SHEET FOR AREAS REQUIRING REINFORCEMENTS
3. SEE STRIKE TEMPLATE (TOP),(BOTTOM) STRIKES.
3. FOR MONITOR STRIKE SEE TEMPLATE.
2. WE RECOMMEND THAT ALL TAPPED HOLES BE DRILLED & TAPPED IN FIELD
1. TOLERANCE ON ALL DIMENSIONS  $\pm 1/64$ "



TEMPLATE: PANIC VERTICAL ROD EXIT DEVICE	日期	01.05.04
	權名	FC-6100