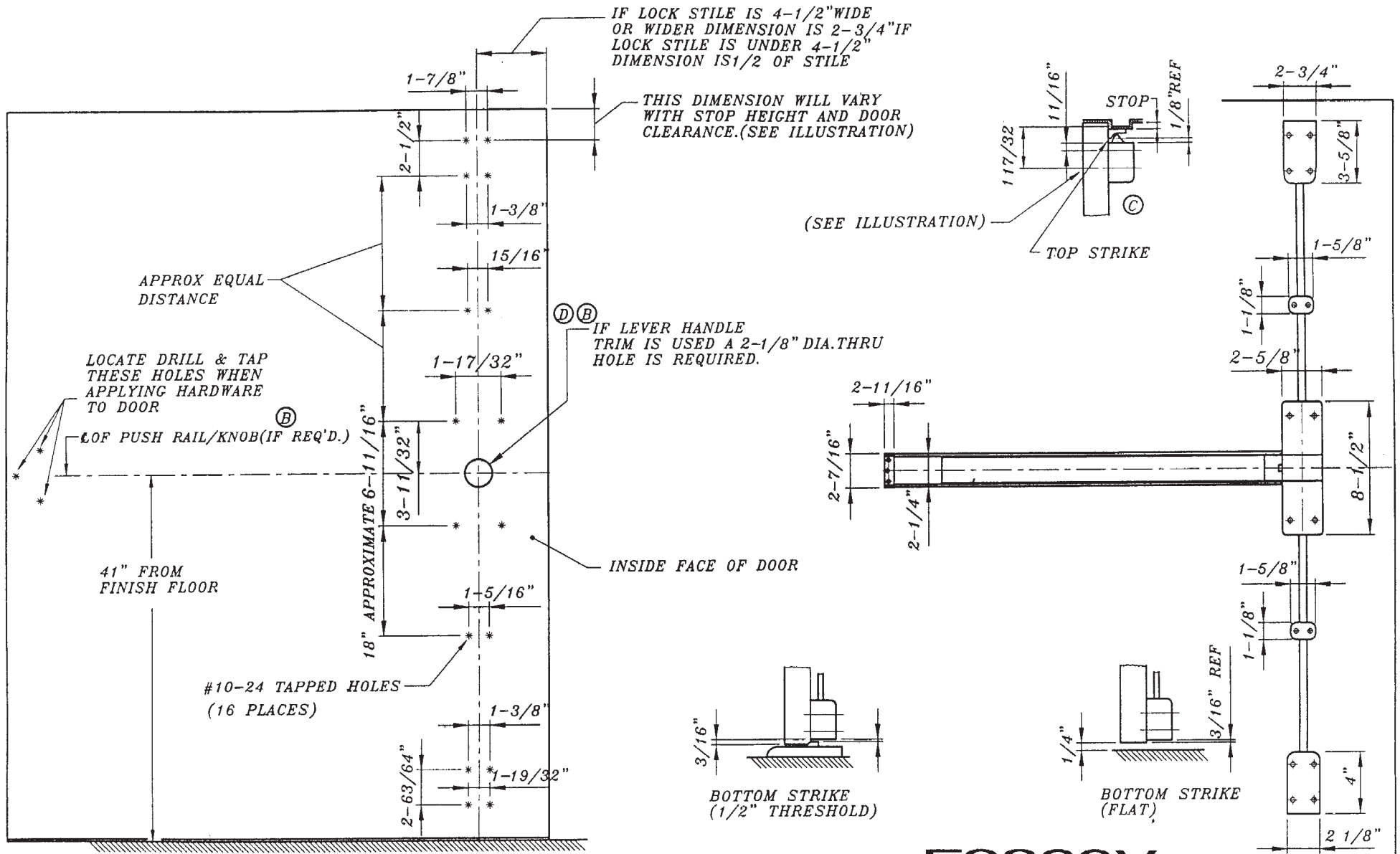


F9860V FIRE-RATED VERTICAL ROD EXIT DEVICE TEMPLATE



5. SURFACE OF DOOR WHERE EXIT DEVICE IS TO BE APPLIED MUST BE FLUSH
4. SEE MASTER SHEET FOR AREAS REQUIRING REINFORCEMENTS
3. SEE STRIKE TEMPLATE FOR TOP AND BOTTOM STRIKES.
2. WE RECOMMEND THAT ALL TAPPED HOLES BE DRILLED & TAPPED IN FIELD
1. TOLERANCE ON ALL DIMENSIONS $\pm 1/64"$



| | | |
|--|-----|----------|
| TEMPLATE: FIRE VERTICAL ROD EXIT DEVICE | EM | 01.05.04 |
| | REV | FC-9100 |