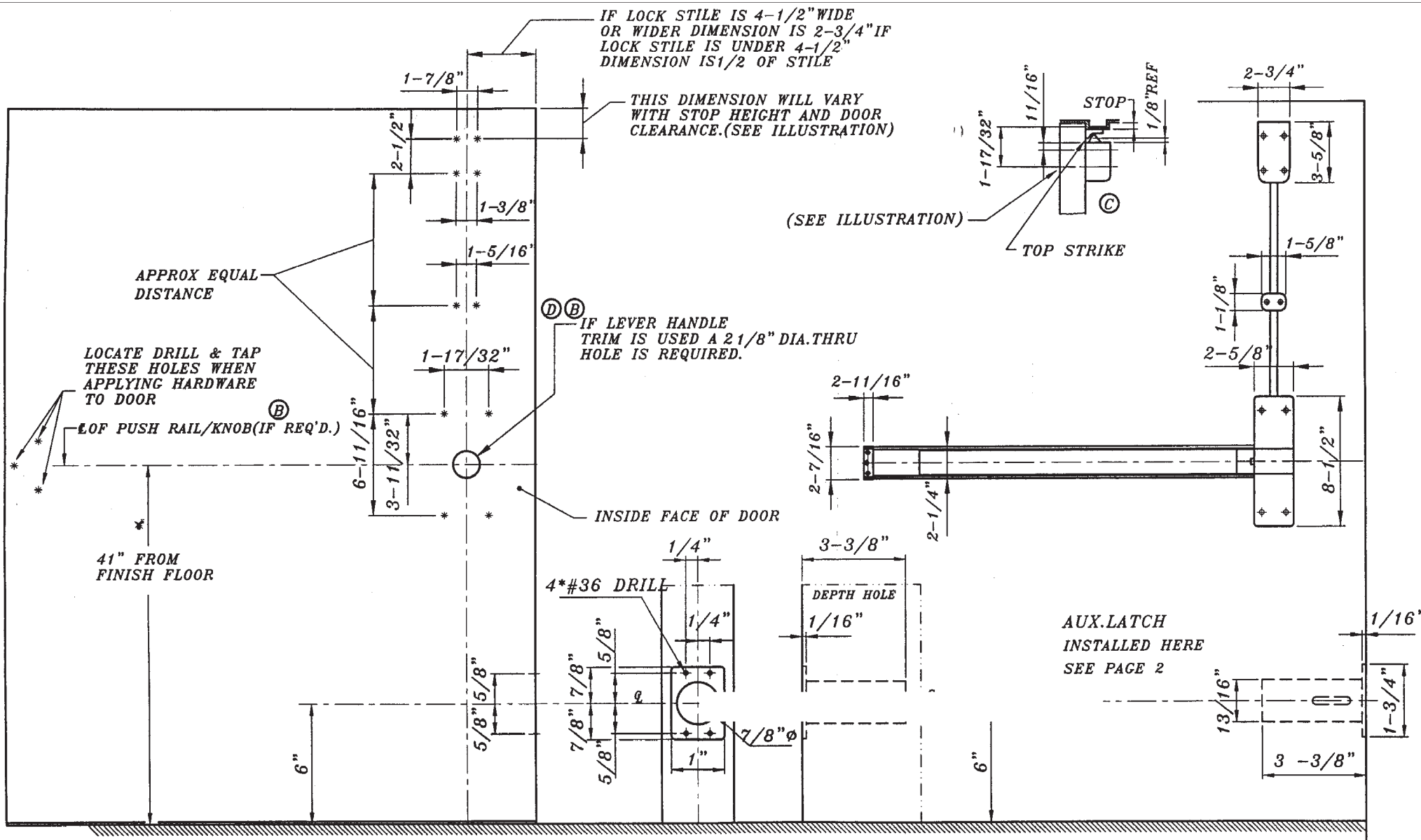


# FIRE-RATED LESS BOTTOM ROD TEMPLATE



5. SURFACE OF DOOR WHERE EXIT DEVICE IS TO BE APPLIED MUST BE FLUSH
4. SEE MASTER SHEET FOR AREAS REQUIRING REINFORCEMENTS
3. SEE STRIKE TEMPLATE FOR TOP AND BOTTOM STRIKES.
2. WE RECOMMEND THAT ALL TAPPED HOLES BE DRILLED & TAPPED IN FIELD
1. TOLERANCE ON ALL DIMENSIONS  $\pm 1/64$ "



LBR-F-9860V		
TEMPLATE: LESS BOTTOM ROD FIRE VERTICAL ROD EXIT DEVICE	日期	01.05.04
	姓名	FC-9100-BTL