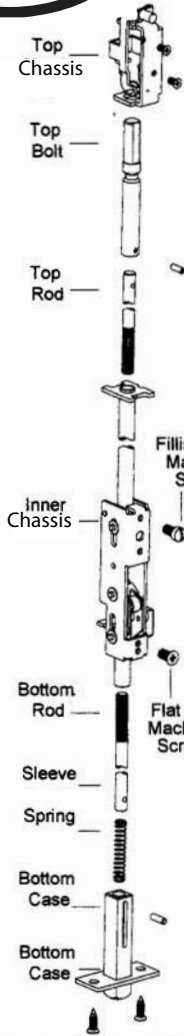


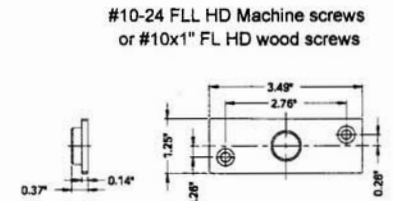
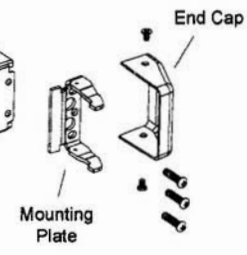
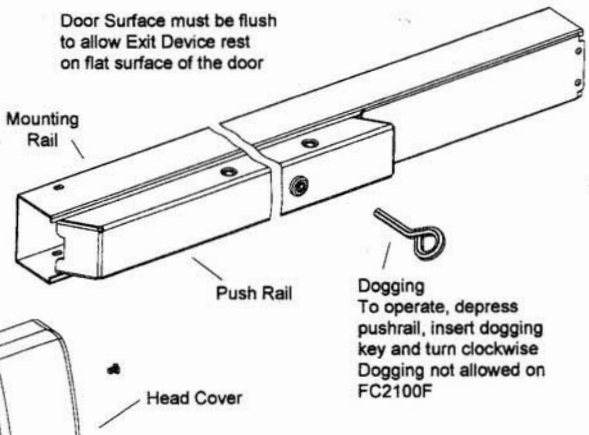
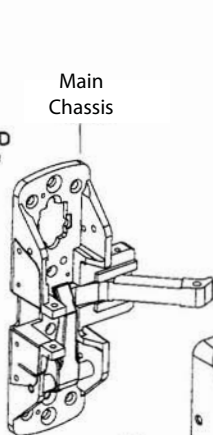
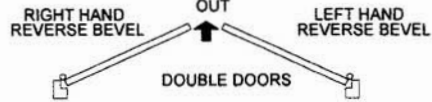


INSTRUCTIONS FOR INSTALLING CAL ROYAL M98CVR CONCEALED VERTICAL ROD EXIT DEVICE

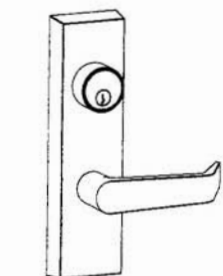


Available stock length
 - For 32" doors, Device can be cut to fit doors down to 24" wide
 - For 36" doors, Device can be cut to fit doors down to 32" wide
 - For 48" doors, Device can be cut to fit doors down to 26" wide

THIS EXIT DEVICE IS HANDED
 CHECK HAND OF DEVICE AGAINST APPLICATION



#10-24 FLL HD Machine screws
 or #10x1" FL HD wood screws



If Esc Lever trim is used,
 See instruction sheet
 packed with the trim

TOP STRIKE

1. PREPARE DOOR

INSIDE SURFACE OF LHRB DOOR SHOWN
 POSITION OF MOUNTING SCREW HOLES ARE IDENTICAL FOR EITHER HAND
 DRILL AND C-SINK FOR #10 FLL HD SCREW 2 PLACES

DRILL AND TAP HINGE STILE FOR #10-24 SCREW USE MOUNTING PLATE TO LOCATE HOLES

DRILL AND COUNTER SINK FOR #10 FLAT HD SCREW

DRILL AND CUTOFF THIS SIDE OF DOOR ONLY

5/8" TYPICAL UNDER CUT BOTTOM OF DOOR

2. MOUNT ROD & CHASSIS

Use Strike Furnished
 - Screw top and bottom rod into inner chassis, and fasten inner chassis in place with Fillister HD and flat HD machine screws

- Adjust top and bottom rods
 - Position top and bottom chassis in place

- Before hanging door, fasten bottom plate to door

- If Esc Lever Trim is used, mount it before mounting main

Before locating mounting plate and levelling rail assembly, attach rail to main chassis with two #8-32 x 3/8" truss head screws, not tightened yet!

3. MOUNT RAIL ASS'Y

3.1 Determine cut-off dimension "X" by subtracting 1-1/8" from dimension "Y"

3.2 Depress arm into rail opening and slide rail onto chassis dimension "Y"

VERTICAL REFERENCE LINE (CHASSIS)
 RAIL MUST OVERLAP STILE BY 5/16" MIN
 MARK CUT-OFF POINT ON MOUNTING RAIL CUT-OFF AND DEBURR

INSERT

4. ATTACH COVER

Attach cover to chassis with four cover screws

Attach end cap to mounting plate with four cover screws

5. OPERATION CHECK

5.1 Depress Pushrail, bolt should retract into door. The latch retractor button should pop out and hold the bolt retracted until button is depressed.

5.2 If button does not pop out, remove top chassis and screw the top rod in one turn. Replace top chassis and repeat above operation.