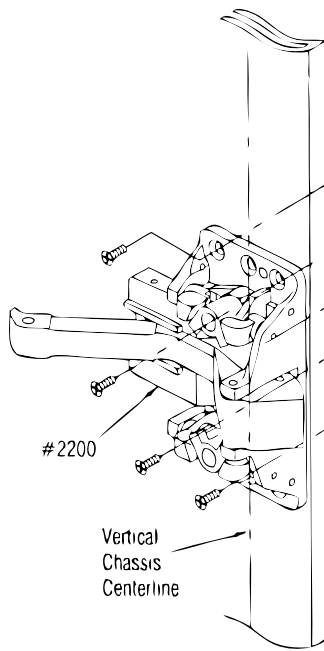
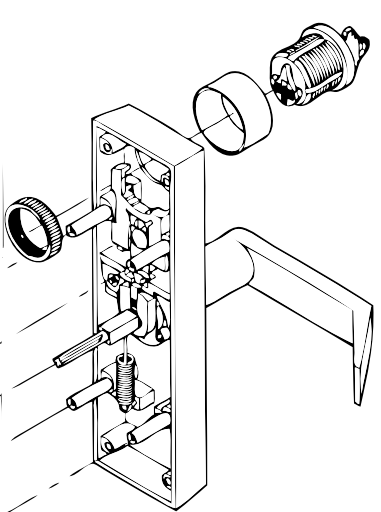
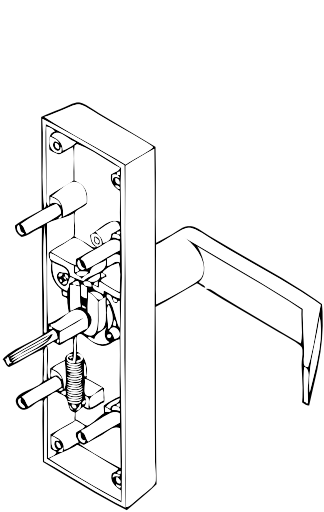
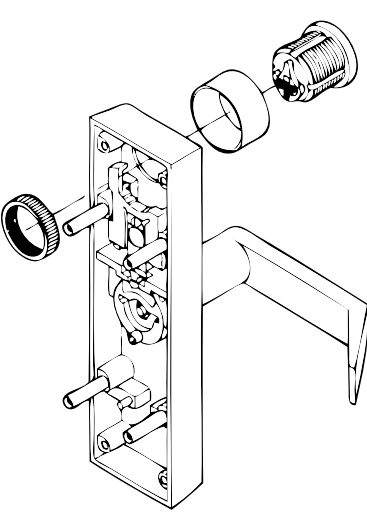
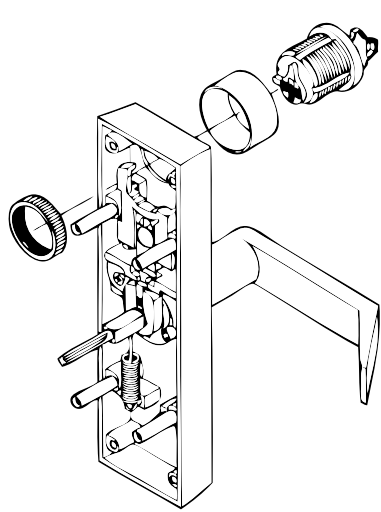




INSTRUCTIONS FOR **CAL-ROYAL** ESC LEVER TRIM  
FOR 2200/2260V series Rim & Vert Rod Device



Esc22-00	Esc22-30	Esc22-40	Esc22-05
 <p>Lockable Esc Lever Trim. Key locks &amp; Unlocks Lever</p>	 <p>No Cyl, Trim Always Operable</p>	 <p>Pull when Push bar locked down Dummy Esc Lever Trim</p>	 <p>Key unlock Esc Lever, key remained on Cyl unless Locked. Cyl Esc Lever Trim</p>
<p><b>13 function Entrance</b></p>	<p><b>15 function Passage</b></p>	<p><b>10 function Dummy</b></p>	<p><b>04 function Storeroom</b></p>
<p>Attach the collar and mortise cylinder to the esc case with mortise nut. Attach case to door thru bolting (4) screws to the chassis, aligning spindle to hub.</p>	<p>Attach Esc xase to door thru bolting the (4) screws to the chassis, aligning the spindle to hub of the chassis.</p>	<p>Attach the collar and dummy cylinder to the Esc case with mortise nut. Attach Esc to door thru bolting (4) screws to the chassis.</p>	<p>Attach the collar and mortise cylinder to the Esc case with mortise nut. Attach case to door thru bolting (4) screws to the chassis, aligning spindle to hub.</p>