

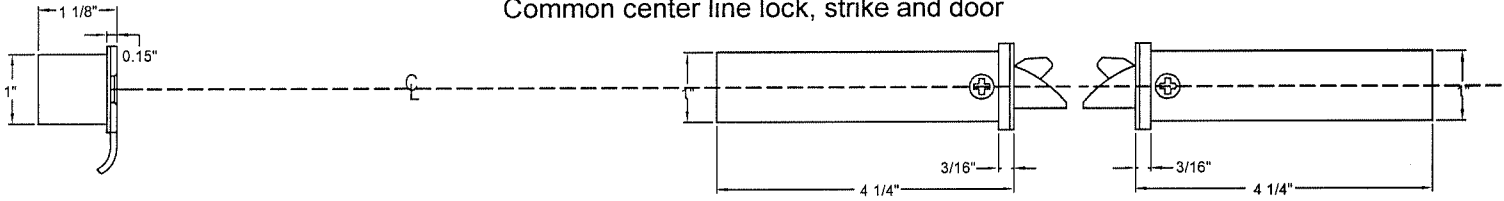
NM8453
 NM8456
 NM8473
 NM8485

Wood or composite doors
Rose trim
 Flat or beveled, wood or composite doors
 Note: Dimensions shown in parenthesis () are in millimeters

CAL-ROYAL
 NM SERIES

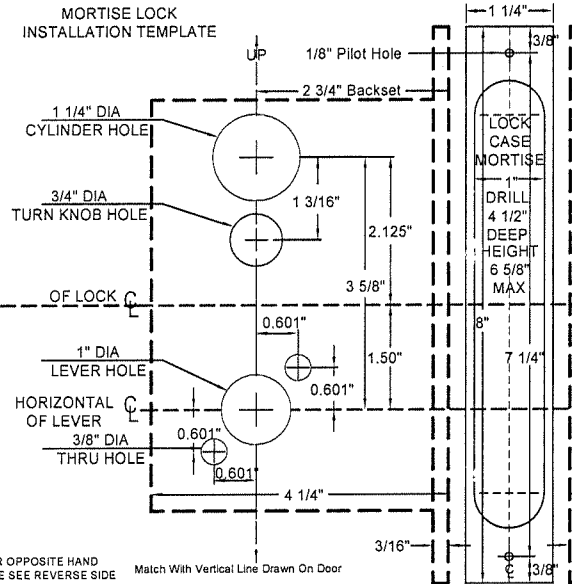


LOCK DETAIL
 Common center line lock, strike and door



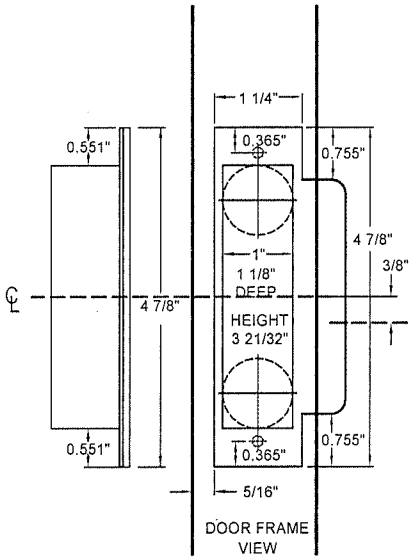
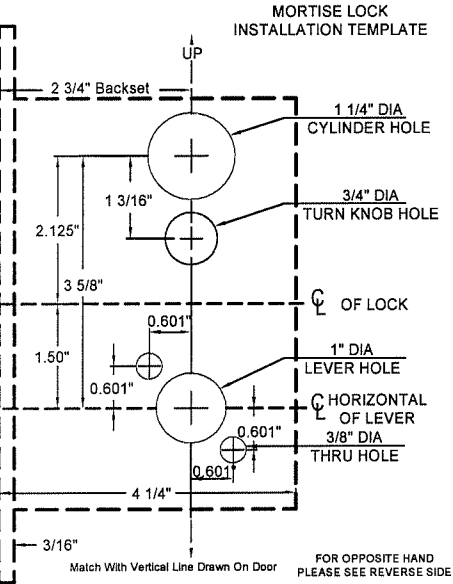
DOOR DETAIL

MORTISE LOCK
 INSTALLATION TEMPLATE



DOOR DETAIL

MORTISE LOCK
 INSTALLATION TEMPLATE



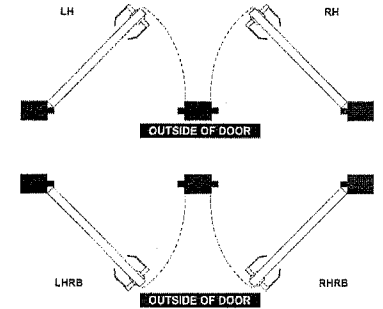
FOR OPPOSITE HAND
 PLEASE SEE REVERSE SIDE
 Match With Vertical Line Drawn On Door

FOR OPPOSITE HAND
 PLEASE SEE REVERSE SIDE
 Match With Vertical Line Drawn On Door

DOOR PREPARATION CHART

SERIES	OUTSIDE			INSIDE		
	LEF POLE	C YLNDR HOLE	STR IKES	LEF POLE	C YLNDR HOLE	STR IKES
NM Series	A	B	C	A	B	C
LOCK FUNCTION						
NM8010	●	●	●	●	●	●
NM8050	●	●	●	●	●	●
NM8453	●	●	●	●	●	●
NM8070	●	●	●	●	●	●
NM8456	●	●	●	●	●	●
NM8080	●	●	●	●	●	●
NM8485	●	●	●	●	●	●
NM8468	●	●	●	●	●	●
NM8040	●	●	●	●	●	●
NM8473	●	●	●	●	●	●
NM8060	●	●	●	●	●	●
NM8170	●	●	●	●	●	●
M8465	●	●	●	●	●	●
M8462	●	●	●	●	●	●
M8460	●	●	●	●	●	●
M8464	●	●	●	●	●	●
M8463	●	●	●	●	●	●

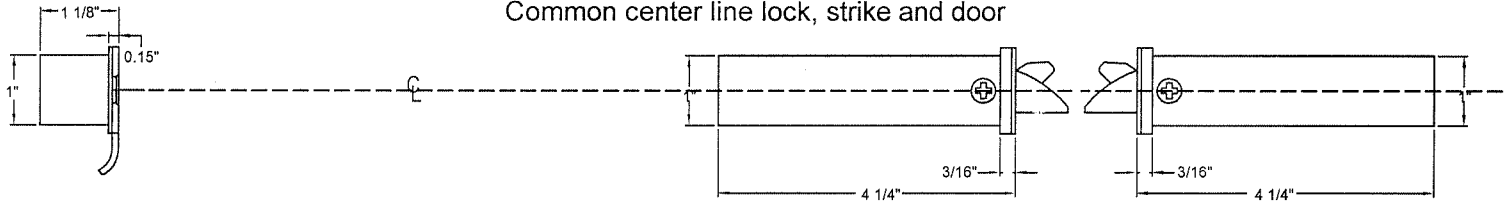
HAND OF DOOR



NM8050 NM8462 Wood or composite doors
 NM8060 NM8465 Rose trim
 NM8070 NM8466 Flat or beveled, wood or composite doors
 NM8080
 Note: Dimensions shown in parenthesis () are in millimeters



LOCK DETAIL
Common center line lock, strike and door



DOOR PREPARATION CHART

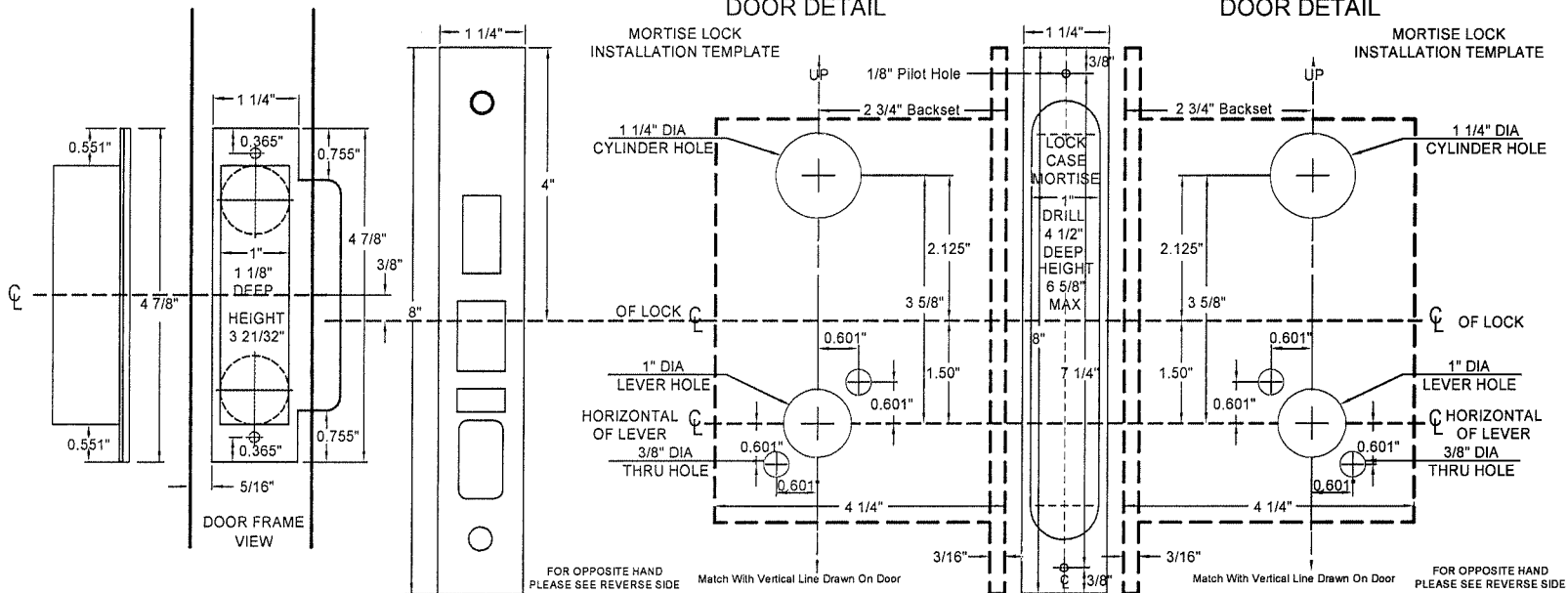
SERIES	OUTSIDE			INSIDE		
	LEFT W/LE	CYLINDER W/LE	TRIP W/LE	LEFT W/LE	RIGHT W/LE	TRIP W/LE
LOCK FUNCTION	A	B	C	A	B	C
NM8010	•	•		•		
NM8050	•	•		•		
NM8453	•	•				•
NM8070	•	•		•		
NM8456	•	•				•
NM8080	•	•		•		
NM8455	•	•				•
NM8466	•	•		•	•	
NM8040	•	•	•	•		
NM8473	•	•		•		•
NM8060	•	•		•	•	
NM8170	•	•		•		
M8465	•	•		•		
M8462	•	•			•	
M8460	•	•			•	
M8464	•	•			•	
M8463	•	•			•	

DOOR DETAIL

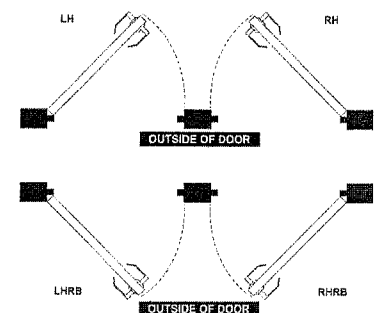
MORTISE LOCK INSTALLATION TEMPLATE

DOOR DETAIL

MORTISE LOCK INSTALLATION TEMPLATE



HAND OF DOOR



NM8010
NM8170

Wood or composite doors

Rose trim

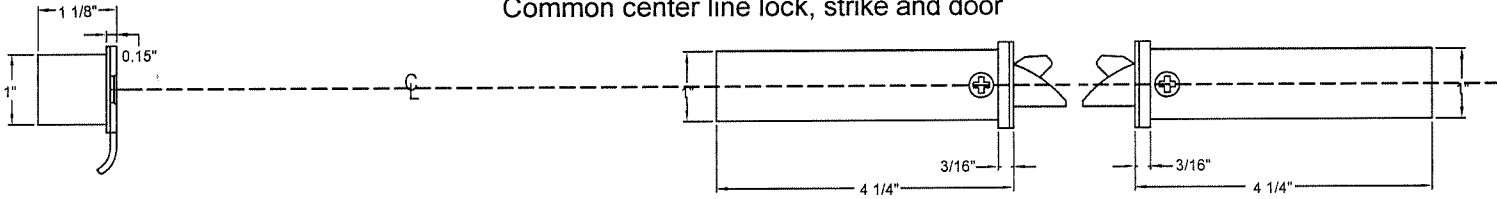
Flat or beveled, wood or composite doors

Note: Dimensions shown in parenthesis () are in millimeters

CAL-ROYAL
NM SERIES



LOCK DETAIL
Common center line lock, strike and door

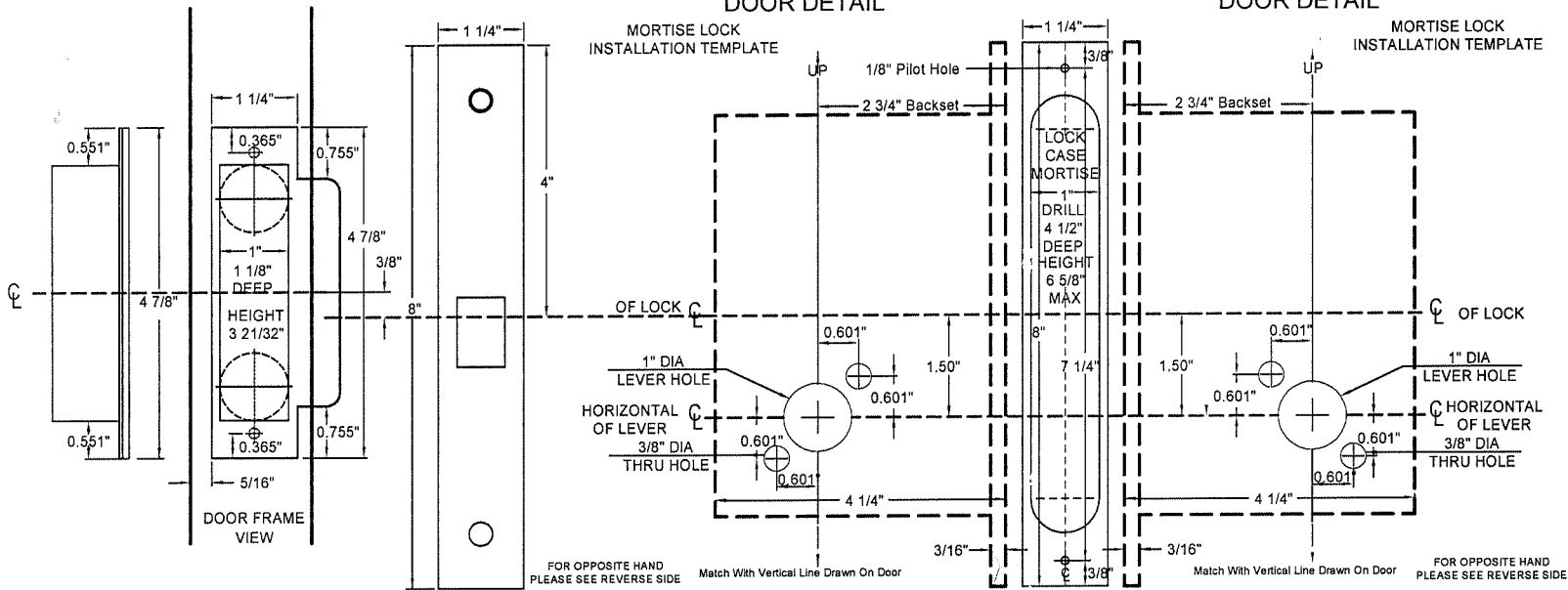


DOOR DETAIL

MORTISE LOCK
INSTALLATION TEMPLATE

DOOR DETAIL

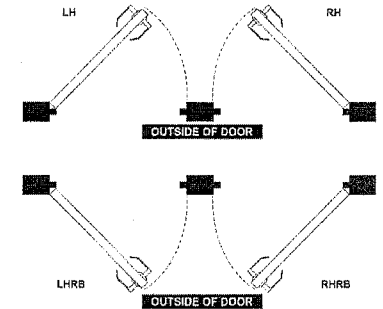
MORTISE LOCK
INSTALLATION TEMPLATE



DOOR PREPARATION CHART

SERIES	OUTSIDE			INSIDE		
	LEAF HOLE	CYLINDER HOLE	STRIKE HOLE	LEAF HOLE	CYLINDER HOLE	STRIKE HOLE
LOCK FUNCTION	A	B	C	A	B	C
NM8010	•	•	•	•	•	•
NM8080	•	•	•	•	•	•
NM8453	•	•	•	•	•	•
NM8070	•	•	•	•	•	•
NM8456	•	•	•	•	•	•
NM8080	•	•	•	•	•	•
NM8485	•	•	•	•	•	•
NM8466	•	•	•	•	•	•
NM8040	•	•	•	•	•	•
NM8473	•	•	•	•	•	•
NM8060	•	•	•	•	•	•
NM8170	•	•	•	•	•	•
MB465	•	•	•	•	•	•
MB462	•	•	•	•	•	•
MB460	•	•	•	•	•	•
MB454	•	•	•	•	•	•
MB463	•	•	•	•	•	•

HAND OF DOOR



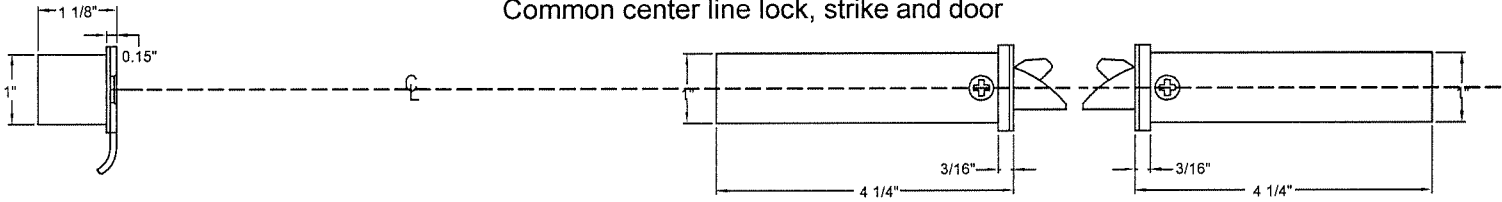
NM8453
 NM8456
 NM8473
 NM8485

Wood or composite doors
Escutcheon trim
 Flat or beveled, wood or composite doors
 Note: Dimensions shown in parenthesis () are in millimeters

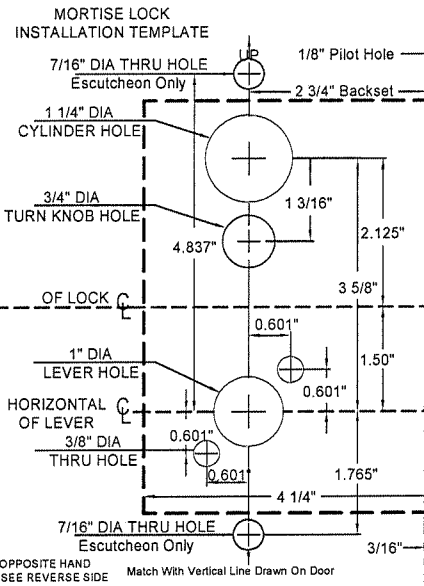


LOCK DETAIL

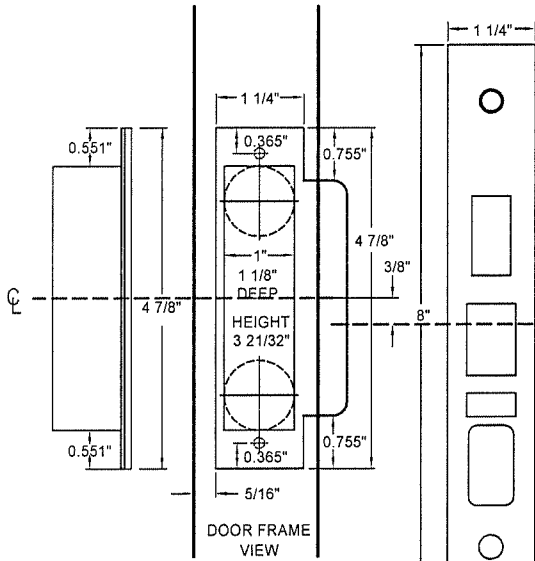
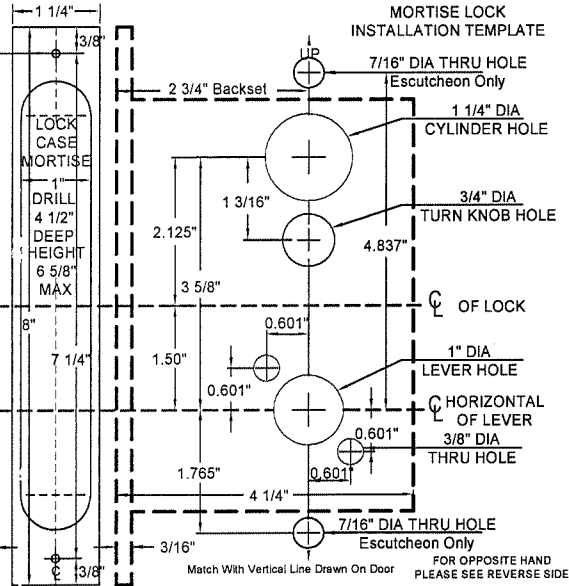
Common center line lock, strike and door



DOOR DETAIL



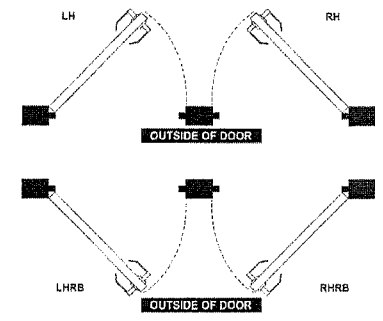
DOOR DETAIL



DOOR PREPARATION CHART

SERIES	OUTSIDE			INSIDE		
	LEVER HOLE	CYLINDER HOLE	TURN KNOB HOLE	LEVER HOLE	CYLINDER HOLE	TURN KNOB HOLE
NM Series	A	B	C	A	B	C
LOCK FUNCTION						
NM8010	•	•	•	•	•	•
NM8050	•	•	•	•	•	•
NM8453	•	•	•	•	•	•
NM8070	•	•	•	•	•	•
NM8456	•	•	•	•	•	•
NM8080	•	•	•	•	•	•
NM8485	•	•	•	•	•	•
NM8466	•	•	•	•	•	•
NM8040	•	•	•	•	•	•
NM8473	•	•	•	•	•	•
NM8060	•	•	•	•	•	•
NM8170	•	•	•	•	•	•
M8465	•	•	•	•	•	•
M8462	•	•	•	•	•	•
M8460	•	•	•	•	•	•
M8464	•	•	•	•	•	•
M8463	•	•	•	•	•	•

HAND OF DOOR



FOR OPPOSITE HAND PLEASE SEE REVERSE SIDE Match With Vertical Line Drawn On Door

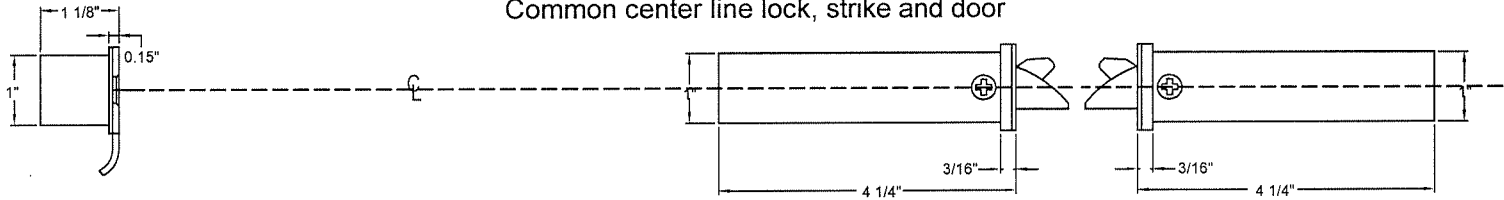
FOR OPPOSITE HAND PLEASE SEE REVERSE SIDE Match With Vertical Line Drawn On Door

NM8050 NM8462 **Wood or composite doors**
 NM8060 NM8465 **Escutcheon trim**
 NM8070 NM8466 Flat or beveled, wood or composite doors
 NM8080 Note: Dimensions shown in parenthesis () are in millimeters



LOCK DETAIL

Common center line lock, strike and door



DOOR PREPARATION CHART

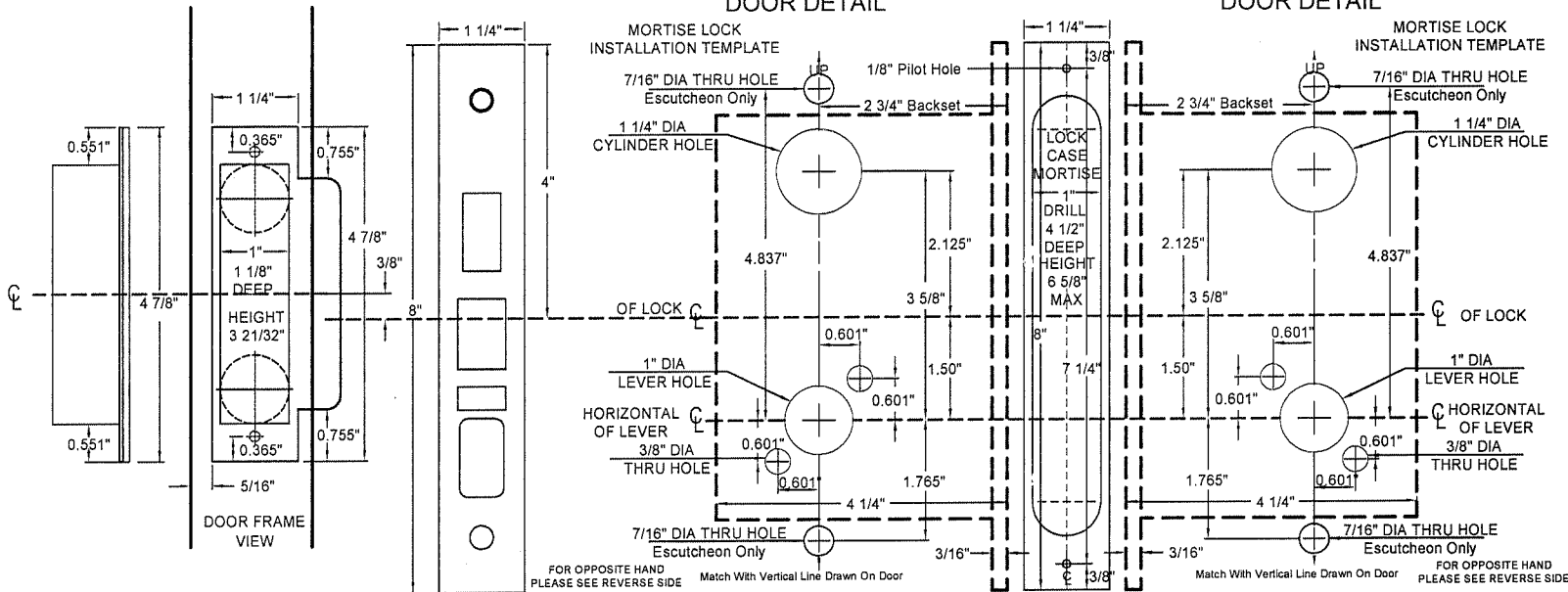
SERIES	OUTSIDE			INSIDE		
	LEFT HOLE	CYLINDER HOLE	TRIP PIN HOLE	LEFT HOLE	CYLINDER HOLE	TRIP PIN HOLE
LOCK FUNCTION	A	B	C	A	B	C
NM8010	•	•	•	•	•	•
NM8050	•	•	•	•	•	•
NM8463	•	•	•	•	•	•
NM8070	•	•	•	•	•	•
NM8456	•	•	•	•	•	•
NM8080	•	•	•	•	•	•
NM8465	•	•	•	•	•	•
NM8456	•	•	•	•	•	•
NM8040	•	•	•	•	•	•
NM8473	•	•	•	•	•	•
NM8060	•	•	•	•	•	•
NM8170	•	•	•	•	•	•
M8465	•	•	•	•	•	•
M8462	•	•	•	•	•	•
M8460	•	•	•	•	•	•
M8464	•	•	•	•	•	•
M8463	•	•	•	•	•	•

DOOR DETAIL

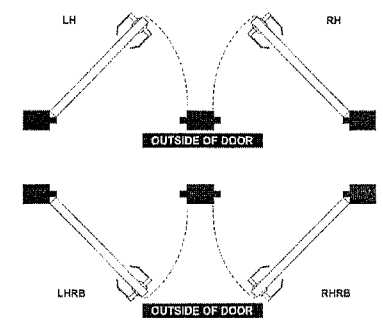
MORTISE LOCK INSTALLATION TEMPLATE

DOOR DETAIL

MORTISE LOCK INSTALLATION TEMPLATE



HAND OF DOOR



NM8010
NM8170

Wood or composite doors

Escutcheon trim

Flat or beveled, wood or composite doors

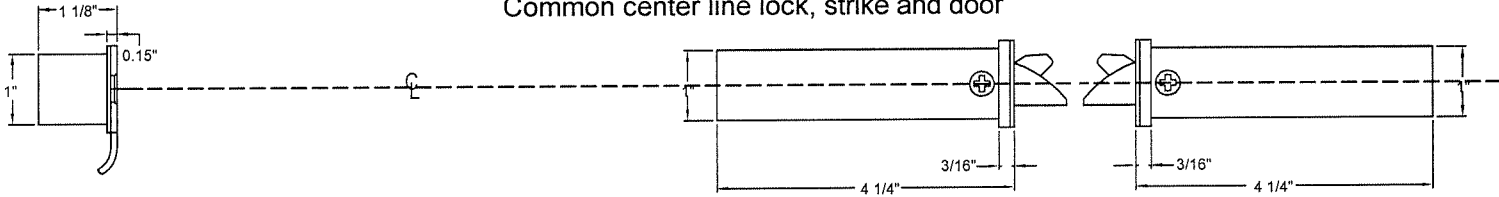
Note: Dimensions shown in parenthesis () are in millimeters

CAL ROYAL
NM SERIES



LOCK DETAIL

Common center line lock, strike and door

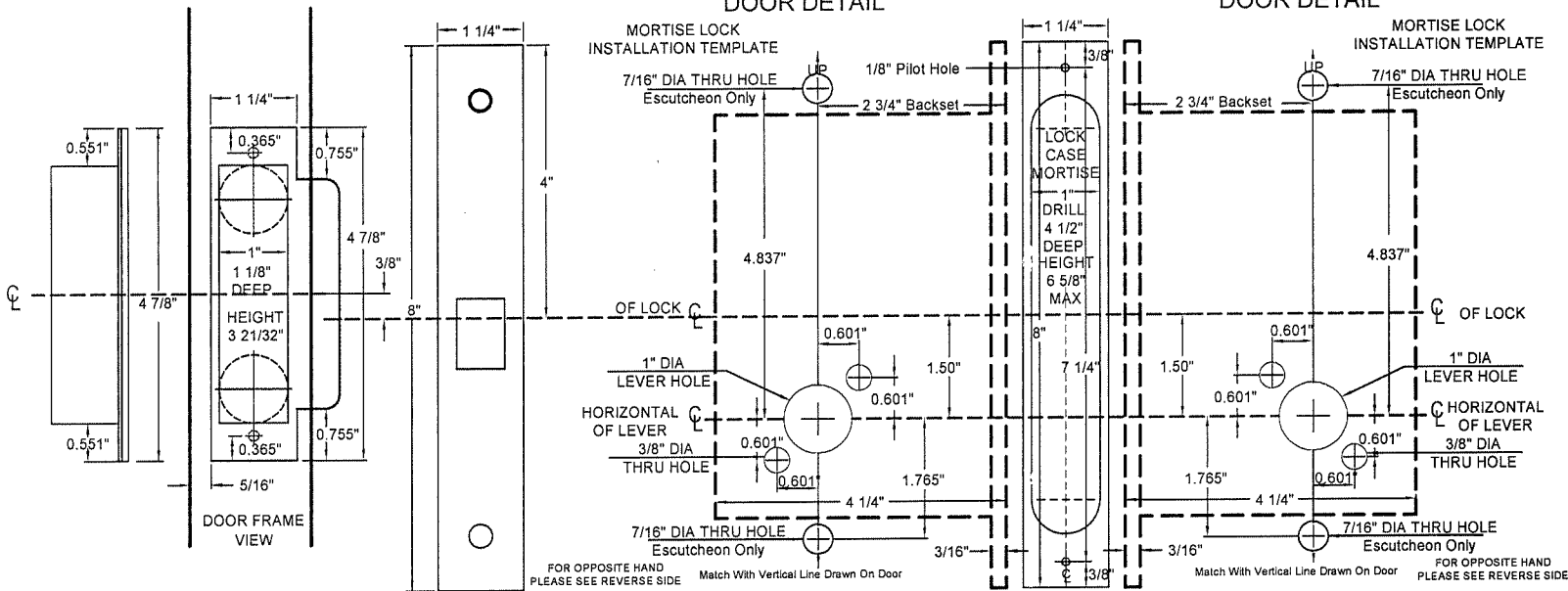


DOOR DETAIL

MORTISE LOCK
INSTALLATION TEMPLATE

DOOR DETAIL

MORTISE LOCK
INSTALLATION TEMPLATE



DOOR PREPARATION CHART

SERIES NM Series	OUTSIDE			INSIDE		
	LEVER HOLE	CYLINDER HOLE	THRU HOLE	LEVER HOLE	CYLINDER HOLE	THRU HOLE
LOCK FUNCTION	A	B	C	A	B	C
NM8010	•	•	•	•	•	•
NM8050	•	•	•	•	•	•
NM8463	•	•	•	•	•	•
NM8070	•	•	•	•	•	•
NM8456	•	•	•	•	•	•
NM8080	•	•	•	•	•	•
NM8485	•	•	•	•	•	•
NM8466	•	•	•	•	•	•
NM8040	•	•	•	•	•	•
NM8473	•	•	•	•	•	•
NM8060	•	•	•	•	•	•
NM8170	•	•	•	•	•	•
M8465	•	•	•	•	•	•
M8462	•	•	•	•	•	•
M8460	•	•	•	•	•	•
M8464	•	•	•	•	•	•
M8463	•	•	•	•	•	•

HAND OF DOOR

