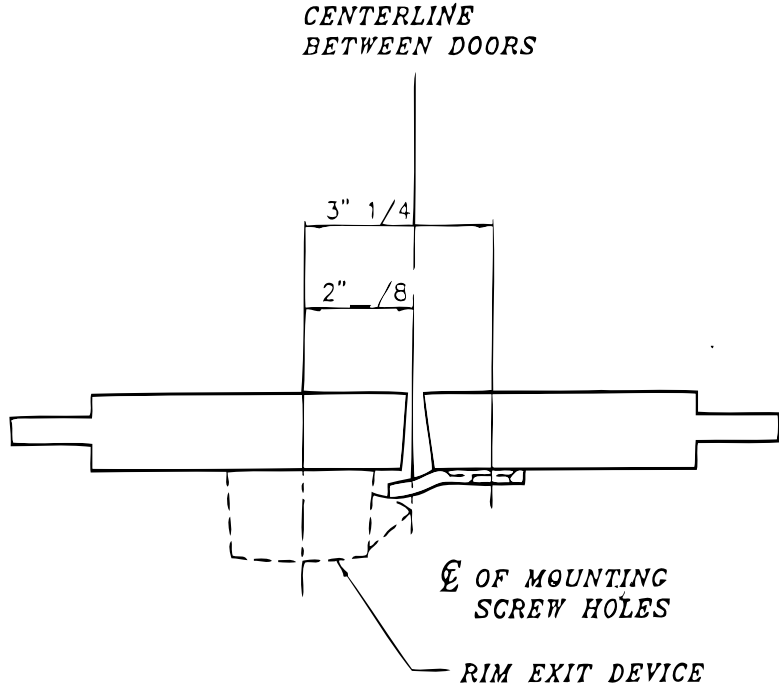




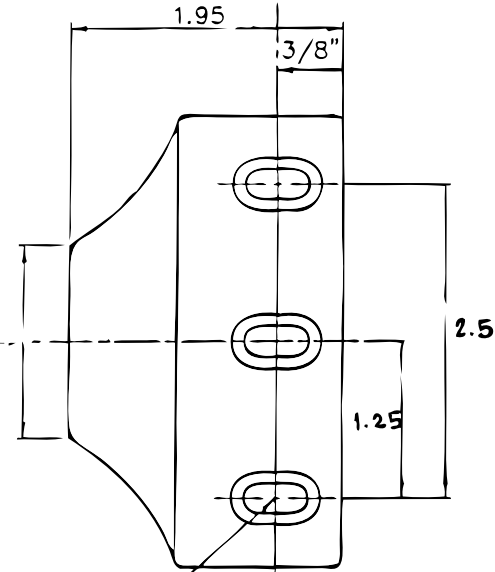
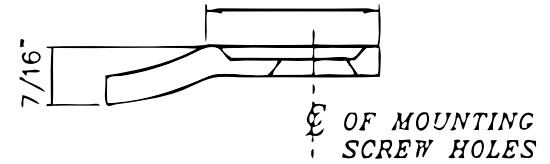
THIS STRIKE USED ON THE DOOR ADJACENT TO THE ONE USING A RIM EXIT DEVICE WHEN NO MULLION IS USED.



☉ OF LATCH BOLT

IMPORTANT

ALIGN WITH LATCH BOLT CENTERLINE AS SHOWN ON EXIT DEVICE TEMPLATE



(2) 3/16" X 32 SCREWS: WE RECOMMEND THAT THESE HOLES BE DRILLED AND TAPPED WHEN APPLYING STRIKE

① - FRACTIONAL DIM. TOL. 2 1/64"

OVERLAPPING STRIKE

TEMPLATE:
METAL DOOR, DOUBLE DOOR STRIKES

88.10.21