

9800 & F9800 Rim Type Panic and Fire Exit Devices (ADA Optional) 9860 & F9860 Vertical Rod Panic and Fire Exit Devices (ADA Optional) ANSI A156.3, Grade 1



Features & Construction

- ◆ **Retrofits Sargent 8800 Series using 9800 Escutcheon Trim**
- ◆ Americans with Disability Act (ADA) compliant. 5lbs opening force on ADA product only
- ◆ ANSI A156.3, Grade 1 heavy duty exit device in surface vertical rod and rim designs
- ◆ Rail assemblies and end caps are brass, bronze or stainless steel and rail travels in direction of the door swing
- ◆ Trims are thru-bolted for additional security
- ◆ Conforms & meets ADA Regulations (ADA products only)
- ◆ UL Listed for Panic and UL10C, UBC 7-2-1997 codes
- ◆ UL Listed for Fire Exit Hardware. 3 hours
- ◆ (A) label rating on pairs of doors up to 8'0" x 8'0" swinging in same or opposite directions
- ◆ Uncompromising security and safety in single and double fire exit doors
- ◆ Chassis mounted unit construction. Rim and vertical rod devices are non-handed and easily reversible.
- ◆ Available in many different functions. Lever and escutcheon trims are grade 1 construction with clutch on rose trims. Escutcheon trims are rigid and covers 161 cut out.
- ◆ For use in institutions, schools, universities, commercial buildings where heavy duty reliable operation is a requirement

Suggested Architect's Specifications

- ◆ All exit devices shall be of touch bar design with smooth operation and be operative over $\frac{2}{3}$ of the door's clear opening width
- ◆ All exit devices must be listed under "Panic Hardware" in the Accident Equipment List of Underwriter' Laboratories, Inc. Where labeled doors are used as exits, they must be equipped with labeled Fire Exit Hardware and UL10C
- ◆ UBC 7-2-1997 codes
- ◆ All springs shall be of stainless steel throughout
- ◆ All exit devices shall be of chassis mounted unit construction.
- ◆ All exit devices shall be ANSI A156.3, Grade 1, ADA option

9800 & F9800 Series A9800 & AF9800 ADA Series

GRADE 1, Rim Type Exit Device



LIFETIME WARRANTY	BHMA CERTIFIED Be Safe. Be Secure. Look for the Mark.	MEETS The Buy American Act		 3 HOUR FIRE RATED UL10C, UBC7-2-1997
--------------------------	---	-----------------------------------	--	---



***Americans with Disability Act (ADA) compliant
5 lbs opening force on ADA Series only**

***Refer to the Price List for Stock Sizes and Finishes**

Specifications

- For Doors.....** 1 3/4" thick standard optional 2 1/4" thick. 4 1/2" minimum stile width required for single or double door application using standard 239 strike and pull or lever, thumbpiece and escutcheon trims.
2 3/4" backset
- ADA Series.....** Prefix "A" before the MODEL #
- Chassis.....** Non-ferrous Alloy (Panic Grade), Steel (Fire Grade)
- Cover.....** Brass, Bronze or Stainless Steel. Covers stock hollow metal doors with 161 cutout
- Mounting.....** Furnished with wood and machine screws. Available with thru-bolts on request. **Thru-bolts are included and standard packaging on fire rated devices**
- Dogging Feature.....** Allen-type key furnished standard on non-fire labeled devices. Cylinder dogging available
- Mullion.....** Available
- UL and ULC Listed...** 9800 Series for panic. F9800 Series for fire exit hardware for all types of 4' x 8' single doors and 8' x 8' double doors for up to 3-hour fire labeled installations, conforms to standards UL10C and UBC 7-2-1997 codes
- Finish.....** Architectural plated finishes. See page 33
- Electronic Functions...** (ELR) Electrical Latch Retraction and RX & LX Signal Switch available

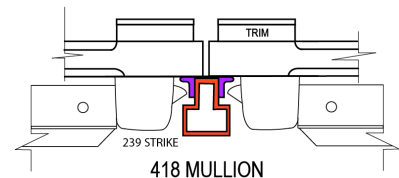
- End Cap.....** Brass, Bronze or Stainless Steel construction
- Alarm.....** Available. See page 33
- Hand.....** Non handed, center hub
- Latch Bolt.....** Stainless Steel 3/4" throw
- Spring.....** Stainless Steel throughout
- ANSI Standard.....** A156.3, Grade 1
- Strike.....** 239 packed standard (See strike page)
- Trim.....** See Trim Designs section

Minimum Stile Requirements

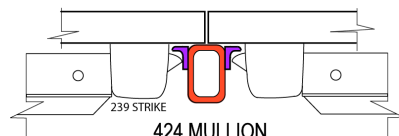
4" escutcheon trims and
4 1/2" for thumbpiece and rose trim

DOUBLE DOOR

4 1/2" MIN. STILE

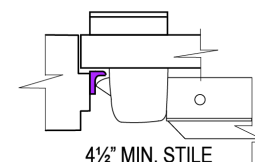


418 MULLION



424 MULLION
4" MIN. STILE

SINGLE DOOR



4 1/2" MIN. STILE

DIMENSIONS

Touchbar height to finished floor	41" (1041 mm) at center
Touchbar Projection	
Neutral	2 1/2" (64 mm)
Depressed	1 3/4" (45 mm)
Center case	8 1/2" x 2 1/2" x 2" (216 mm x 64 mm x 51 mm)

MODEL	ACTUAL SIZE	MAX CUT DOWN	DOOR SIZE
9800EO24, F9800EO24,	20"	2"	22" to 24" door width
9800EO32, F9800EO32	28"	6"	26" to 32" door width
9800EO36, F9800EO36	32"	6"	30" to 36" door width
9820EO48, F9820EO48	44"	12"	36" to 48" door width

***Add prefix "A" before MODEL # for ADA Exit Devices.**

9860V & F9860V Series A9860V & AF9860V ADA Series

GRADE 1, Vertical Rod Type Exit Device



LIFETIME WARRANTY	BHMA CERTIFIED <small>Be Safe. Be Secure. Look for the Mark.</small>	MEETS <i>The Buy American Act</i>	ADA COMPLIANT	UL US 3 HOUR FIRE RATED UL10C, UBC7-2-1997
--------------------------	---	---	---------------	---

Specifications



For Doors.....	1 3/4" thick standard optional 2 1/4" thick. 3 3/4" minimum stile width required for single door application. 3 1/2" minimum stile width required for double door application. Lever, thumbpiece and escutcheon trims available. 2 3/4" backset
ADA Series.....	Prefix "A" before the MODEL #
Top & Bottom Chassis.....	Non-ferrous Alloy (Panic Grade), Steel (Fire Grade)
Cover.....	Brass, Bronze or Stainless Steel. Covers stock hollow metal doors with 161 cutout.
Mounting.....	Furnished with wood and machine screws. Thru-bolts are standard packaging on fire rated devices
Alarm.....	Available. Prefix "NALRM" before MODEL #
End Cap.....	Brass, Bronze or Stainless Steel Construction
Hand.....	Handed. Easily field reversible. Specify at time of order LHR, RHR for convenience
Latch Bolt, Spring.....	Stainless Steel
ANSI Standard.....	A156.3, Grade 1
Rail Assembly.....	Heavy gauge brass, bronze or stainless steel

***Americans with Disability Act (ADA) compliant
5 lbs opening force on ADA Series only**

***Refer to the Price List for Stock Sizes and Finishes**

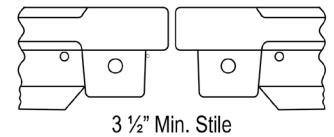
Strike.....	See strike page
Dogging Feature.....	Allen-type key furnished standard on non-fire labeled devices. Cylinder dogging available
Electronic Functions.....	(ELR) Electrical Latch Retraction and RX & LX Signal Switch available
UL and ULC Listed.....	9860 Series for panic. F9860 Series for fire exit hardware for all types of 8' x 10' double doors for up to 3-hour fire labeled installations, conforms to standards UL10C and UBC 7-2-1997 codes
Finish.....	Architectural plated finishes. See page 33

DIMENSIONS

Touchbar height to finish floor	41" (1041 mm) at center
Touchbar Projection	
Neutral	2 1/2" (64 mm)
Depressed	1 3/4" (45 mm)
Panic grade top & bottom latch case	3 15/16" x 2 1/8" x 1 3/8" (100 mm x 54 mm x 35 mm)
Fire grade top latch case	3 15/16" x 2 11/16" x 2 1/16" (100 mm x 68 mm x 52 mm)
Fire grade bottom latch case	3 15/16" x 2 1/8" x 1 3/8" (100 mm x 54 mm x 35 mm)
Top and bottom rod length for 36" x 84"	Top rod 37 1/2" (953 mm), bottom rod 35 5/8" (905 mm) ADA Top rod 35 1/4" (895 mm), bottom rod 34 1/4" (867 mm)
Top and bottom rod length for 48" x 96"	Top rod 49 5/8" (1260 mm), bottom rod 35 5/8" (905 mm)
Vertical rods	1/2" (13 mm) Round tubing

Minimum Stile Requirements

Double Door with Two Vertical Rod Type Exit Devices



MODEL	ACTUAL SIZE	MAX CUT DOWN	DOOR SIZE
9810V2484, F9810V2484	20"	2"	22" to 24" door width
9860V3684, F9860V3684, 9890V3696, F9890V3696, 9850V36120, F9850V36120, 9870V3284, F9870V3284	32"	6"	30" to 36" door width
9880V4896, F9880V4896, 9840V48120, F9840V48120	44"	12"	36" to 48" door width

***Add prefix "A" before MODEL # for ADA Exit Devices.**

LBR9860V & LBRF9860V Series

ALBR9860V & ALBRF9860V ADA Series

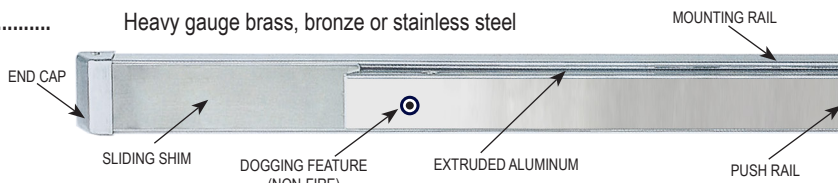
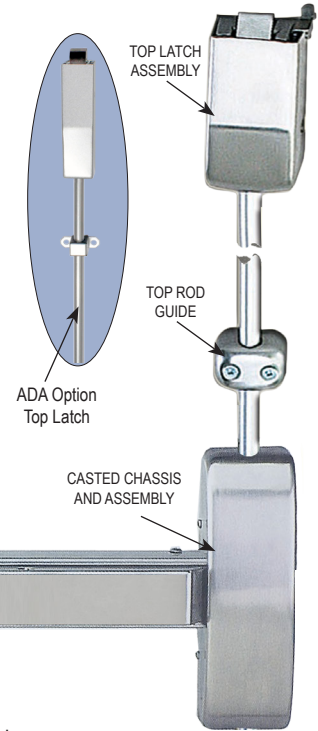
GRADE 1, Vertical Rod Exit Device Less Bottom Rod



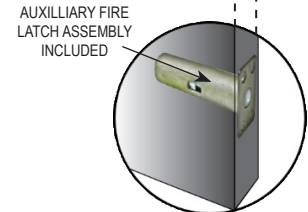
LIFETIME WARRANTY	BHMA CERTIFIED Be Safe. Be Secure. Look for the Mark.	MEETS The Buy American Act		 3 HOUR FIRE RATED UL10C, UBC7-2-1997
--------------------------	---	--------------------------------------	--	---

Specifications

For Doors.....	1 3/4" thick standard optional 2 1/4" thick. 3 3/4" minimum stile width required for single door application. 3 1/2" minimum stile width required for double door application. Lever, thumbpiece and escutcheon trims available. 2 3/4" backset
ADA Series.....	Prefix "A" before the MODEL #
Top Chassis.....	Non-ferrous Alloy (Panic Grade), Steel (Fire Grade)
Cover.....	Brass, Bronze or Stainless Steel. Covers stock hollow metal doors with 161 cutout.
Mounting.....	Furnished with wood and machine screws. Thru-bolts are standard packaging on fire rated devices
Alarm.....	Available. Prefix "NALRM" before MODEL #
End Cap.....	Brass, Bronze or Stainless Steel Construction
Hand.....	Handed. Easily field reversible. Specify at time of order LHR, RHR for convenience
Latch Bolt, Spring.....	Stainless Steel
Auxiliary Spring Latch.....	Auxiliary spring loaded latchbolt is installed in the lower edge of the door, when exposed to fire, latchbolt releases keeping the door closed and regulated. Comes standard on Fire-Rated device only.
ANSI Standard.....	A156.3, Grade 1
Rail Assembly.....	Heavy gauge brass, bronze or stainless steel



Strike.....	See strike page
Dogging Feature.....	Allen-type key furnished standard on non-fire labeled devices. Cylinder dogging available
Electronic Functions.....	(ELR) Electrical Latch Retraction and RX & LX Signal Switch available
UL and ULC Listed.....	9860 Series for panic. F9860 Series for fire exit hardware for all types of 8' x 8' double doors for up to 3-hour fire labeled installations. Conforms to standards UL10C and UBC 7-2-1997 codes.
Finish.....	Architectural plated finishes. See page 33



***Americans with Disability Act (ADA) compliant
5 lbs opening force on ADA Series only**

***Refer to the Price List for Stock Sizes and Finishes**

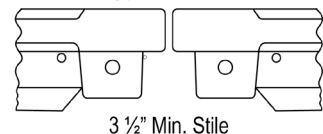
DIMENSIONS

Touchbar height to finish floor	41" (1041 mm) at center
Touchbar Projection	
Neutral	2 1/2" (64 mm)
Depressed	1 3/4" (45 mm)
Panic grade top & bottom latch case	3 15/16" x 2 1/8" x 1 3/8" (100 mm x 54 mm x 35 mm)
Fire grade top latch case	3 15/16" x 2 11/16" x 2 1/16" (100 mm x 68 mm x 52 mm)
Fire grade bottom latch case	3 15/16" x 2 1/8" x 1 3/8" (100 mm x 54 mm x 35 mm)
Top and bottom rod length for 36" x 84"	Top rod 37 1/2" (953 mm)
Top and bottom rod length for 48" x 96"	Top rod 49 5/8" (1260 mm)
Vertical rods	1/2" (13 mm) Round tubing

MODEL	ACTUAL SIZE	MAX CUT DOWN	DOOR SIZE
LBR9810V2484, LBRF9810V2484	20"	2"	22" to 24" door width
LBR9870V3284, LBRF9870V3284	28"	6"	26" to 32" door width
LBR9860V3684, LBRF9860V3684, LBR9890V3696, LBRF9890V3696, LBR9850V36120	32"	6"	30" to 36" door width
LBR9880V4896, LBRF9880V4896, LBR9840V48120	44"	12"	36" to 48" door width

Minimum Stile Requirements

Double Door with Two Vertical Rod Type Exit Devices



***Add prefix "A" before MODEL # for ADA Exit Devices.**

Alarm Exit Hardware

GRADE 1 Rim Type Exit Device



Rim Type Exit Devices

NALRM9800EO36 Alarm Rim Type 36" Door (Panic Grade)

NALRM9820EO48 Alarm Rim Type 48" Door (Panic Grade)

FNALRM980036 Alarm Rim Type 36" Door (Fire Grade)

FNALRM982048 Alarm Rim Type 48" Door (Fire Grade)

Also available on ADA Series

Vertical Rod Type Exit Devices

Prefix "NALRM" before MODEL #

Features

- 1, 3, 5-minute and continuous alarm type settings available 3 ½"
- ON and OFF power switch
- Alarm sound frequency is 120 db
- Alarm unit has an internal horn. When the push rail is depressed, the horn sounds to provide an audible means of signaling that the door has been opened and breached
- The key switch to turn alarm off is a standard 1 ¼" cylinder with "C" keyway. The alarm operates on one standard 9-volt transistor battery. When battery is weak the horn will emit an intermittent signal.
- Alarmed units are supplied with a micro switch, which monitors the push rail and the latch bolt for foolproof security on rim devices
- Alarm unit has a signal OC output that can be linked to external alarm control systems
- Easy removal of the alarm unit without the need to dismount the exit device for battery maintenance
- Unit includes "EMERGENCY EXIT ONLY ALARM WILL SOUND" decal for application on door or unit

Finishes

Cal-Royal	Description	BHMA	US Finish	Material
P	Prime Coat	600	USP	Steel
3	Polished Brass, Clear Powder Coat	605	US3	Brass
4	Satin Brass, Clear Powder Coat	606	US4	Brass
9	Polished Bright Bronze	611	US9	Bronze
10	Satin Bronze, Clear Powder Coat	612	US10	Bronze
10B	Oil Rubbed Bronze	613	US10B	Bronze
26	Polished Bright Chrome	625	US26	Brass
26D	Satin Chrome	626	US26D	Brass
32	Polished Bright Stainless	628	US32	Stainless Steel
32D	Satin Stainless	630	US32D	Stainless Steel

Trim Selection

CLUTCH CYLINDRICAL LEVER

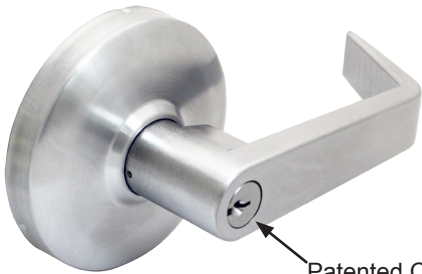


Non-handed Grade 1 (Clutch Style)

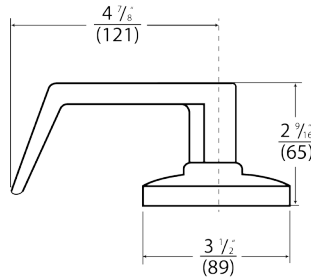
Cylindrical body hardened steel heavy duty tailpiece. For 1 3/4" and 2 1/4" doors. Prefix THI before Part # for 2 1/4" door thickness. Available for fire and non fire rated rim and vertical rod exit devices.

Rose diameter 3 1/2", lever length 4 3/4". Fits and covers 161 cutout.

Finishes: Architectural plated finishes.



Patented Clutch Freewheeling



- ENT00L or
- ICENT00L or
- ICSCENT00L4
- SARICENT00L (Sargent)
- RUSICENT00L (Corbin/Ruswin)
- YALICENT00L (Yale)
- 8000K

- STR05L or
- ICSTR05L or
- ICSCSTR05L4
- SARICSTR05L (Sargent)
- RUSICSTR05L (Corbin/Ruswin)
- YALICSTR05L (Yale)

PAS30L

DUM40L

ENTRANCE
Key locks and unlocks lever. Operates as CLASSROOM FUNCTION. ANSI Function – 08

Ball Knob Keylock

STOREROOM
Key operates lever, otherwise always locked. ANSI Function – 04

PASSAGE
Trim always operable and free. ANSI Function - 15

DUMMY
Dummy trim. One sided ANSI Function – 10

When ordering "AT" and "SPA" designs, prefix design name before Part #. Example: ENT00L in "AT" is **ATENT00L**.

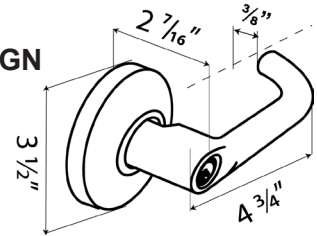
KEYWAY: 6-Pin solid brass "C" keyway standard. Optional: Schlage E, Schlage C-K, Ruswin D1-2-3-4, Corbin 59/60, Sargent LA-LB-LC, Falcon/Weiser E, Arrow A, Yale 8, Yale GA and Kwikset. Can also accept Medeco, Assa, Kaba and **Cal-Royal HSK** High Security Cylinders.

- **(IC) INTERCHANGEABLE CORE:** Interchangeable Core locks will accept compatible 6 or 7-Pin cores with BEST, FALCON and ARROW.
- **(ICSC) INTERCHANGEABLE CORE:** Indicates function available with Schlage Full Size Format Interchangeable Core. Corbin, Sargent and Yale format also available.

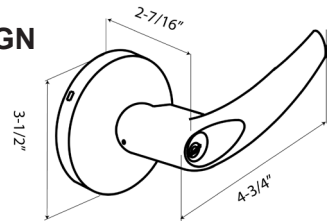
Other Lever Trim Designs



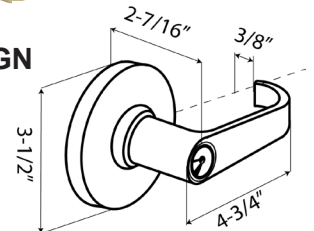
TUB DESIGN



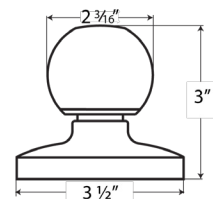
AT DESIGN



SPA DESIGN



8000K



Trim Selection

HEAVY DUTY STAINLESS STEEL CLUTCH LEVER ESCUTCHEON (High Frequency Abusive Situation such as Schools, Hospitals, Industrial / Institutions)

CONSTRUCTION

- Clutch mechanism
- Double heavy duty spring support to prevent sagging and enhance operation
- Grade 1, thru-bolted design. Non-handed design. Easily field reversible
- All Stainless Steel heavy duty tailpiece.
Available for fire and non fire rated rim and vertical rod exit devices
- Standard 6-Pin Schlage "C" Mortise Cylinder included

DOOR THICKNESS

Standard 1 3/4" to 2". For 2 or 2 1/2" thick door use additional Part # TAIL9

ESCUTCHEON DIMENSIONS

2 5/8" width X 10 5/8" length. Lever length: 4 5/8"

Fits and covers 2 1/8" 161 cutout

HDESC-00 or

- ICHDESC-00
- ICCHDESC-00
- HDTSESC-00
- ICHDTSESC-00
- ICCHDTSESC-00

ENTRANCE

Clutch Entrance, key locks or unlocks escutcheon trim
ANSI FUNCTION (63) Operates as classroom function

HDESC-05 or

- ICHDESC-05
- ICCHDESC-05
- HDTSESC-05
- ICHDTSESC-05
- ICCHDTSESC-05

STOREROOM

Clutch Storeroom, key unlocks lever, lever retracts
latch bolt, otherwise always locked
ANSI FUNCTION (04)

HDESC-30

HDTSESC-30

PASSAGE

Trim always operable and free
ANSI Function (62)

HDESC-40

HDTSESC-40

DUMMY

Dummy Escutcheon trim ANSI FUNCTION (10)

KEYWAY: 6-Pin solid brass "C" keyway Mortise Cylinder standard. Optional: Schlage E, Schlage C-K, Russwin D1-2-3-4, Corbin 59/60, Sargent LA-LB-LC, Falcon/Weiser E, Arrow A, Yale 8, Yale GA and Kwikset. Can also accept Medeco, Assa, Kaba and Cal-Royal HSK High Security Cylinders.

FOR ELECTRIFIED TRIM OPTIONS SEE PAGE 38

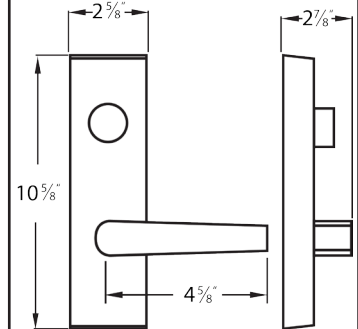
• (IC) **INTERCHANGEABLE CORE:** Interchangeable Core locks will accept compatible 6 or 7-Pin cores with BEST, FALCON and ARROW

• (ICSC) **INTERCHANGEABLE CORE:** Indicates function available with Schlage Full size format Interchangeable Core. Corbin, Sargent and Yale format also available.

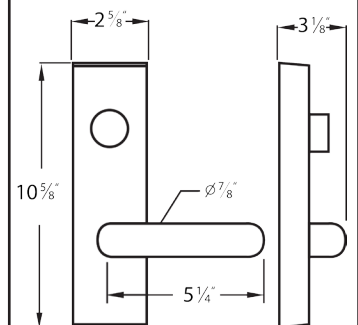
Lever Trim Designs



HDESC



HDTSESC



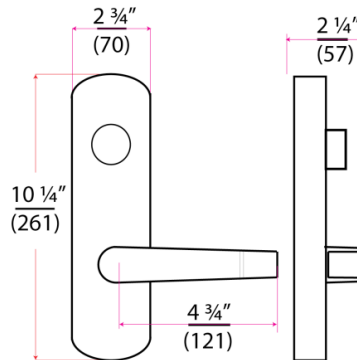
Trim Selection

RIGID LEVER ESCUTCHEON



CONSTRUCTION

- Rigid, non clutch mechanism.
- Double heavy duty spring support to prevent sagging and enhance operation.
- Grade 1, thru-bolted design. Non-handed design. Easily field reversible.
- Hardened steel heavy duty tailpiece. Available for fire and non fire rated rim and vertical rod exit devices.
- Standard 6-Pin Schlage "C" Mortise Cylinder included



DOOR THICKNESS

Standard 1 3/4". For 2 1/4" thick door use additional Part # TAIL3

ESCUTCHEON DIMENSIONS

2 3/4" width X 10 1/4" length. Lever length: 4 3/4". Fits and covers 2 1/8" 161 cutout

NESC9800 or ● ICNESC9800 or ● ICSCNESC9800	ENTRANCE Rigid Entrance, key locks or unlocks escutcheon trim ANSI FUNCTION (63) Operates as classroom function
NESC9805 or ● ICNESC9805 or ● ICSCNESC9805	STOREROOM Rigid Storeroom, key unlocks lever, lever retracts latch bolt, otherwise always locked ANSI FUNCTION (04)
NESC9830	PASSAGE Trim always operable and free ANSI Function (62)
NESC9840	DUMMY Dummy Escutcheon trim ANSI FUNCTION (10)

TO ORDER other lever design insert "AT" or "RL" before "ESC":
e.g. **ATESC9800** for ESC9800 with AT design or **RLESC9800** for ESC9800

KEYWAY: 6-Pin solid brass "C" keyway Mortise Cylinder standard. Optional: Schlage E, Schlage C-K, Russwin D1-2-3-4, Corbin 59/60, Sargent LA-LB-LC, Falcon/Weiser E, Arrow A, Yale 8, Yale GA and Kwikset. Can also accept Medeco, Assa, Kaba and **Cal-Royal HSK** High Security Cylinders.

FOR ELECTRIFIED TRIM OPTIONS SEE PAGE 38

- **(IC) INTERCHANGEABLE CORE:** Interchangeable Core locks will accept compatible 6 or 7-Pin cores with BEST, FALCON and ARROW.
- **(ICSC) INTERCHANGEABLE CORE:** Indicates function available with **Schlage Full Size Format** Interchangeable Core. Corbin, Sargent and Yale format also available.

Lever Trim Designs



NESC



ATESC



RLESC



TUBESC

Trim Selection

PULL DESIGN



9800 NL
IC9800NL
ICSC9800NL

FOR RIM DEVICES ONLY

Outside by pull and key.
Key retracts latch bolt.
ANSI function – 03
Covers 161 cutout

KEYWAY

Standard 6-Pin solid brass “C”
keyway Rim Cylinder included.

FINISHES

Architectural plated finishes.



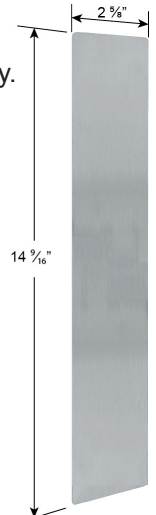
9800 DTP

Outside by pull only.
Pull when dogged.
ANSI function – 02
Covers 161 cutout.



9800 EOP

Outside by plate only.
ANSI function – 10
Covers 161 cutout



THUMBPIECE TRIM

(OPERATES ON RIM & VERTICAL ROD DEVICES)

98TP-00 or
IC98TP00
ICSC98TP00

ENTRANCE

Key locks or unlocks thumbpiece.
(Operates as classroom function)
ANSI Function – 63

98TP-05 or
IC98TP05
ICSC98TP05

STOREROOM

Key unlocks thumbpiece, thumbpiece retracts
latch bolt, otherwise always locked.
ANSI Function-04

98TP-30

PASSAGE

Trim always operable and free.
ANSI Function – 62

98TP-40

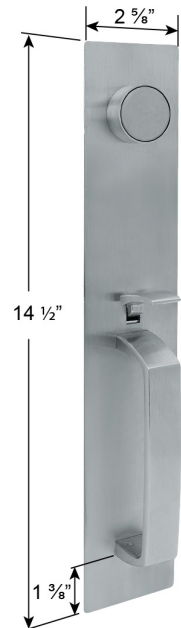
DUMMY

Dummy trim. **Includes blank Mortise
dummy cylinder.** One sided.
ANSI function – 10

KEYED



DUMMY



KEYWAY: 6-Pin solid brass “C” keyway Mortise Cylinder standard. Optional: Schlage E, Schlage C-K, Russwin D1-2-3-4, Corbin 59/60, Sargent LA-LB-LC, Falcon/Weiser E, Arrow A, Yale 8, Yale GA and Kwikset. Can also accept Medeco, Assa, Kaba and **Cal-Royal HSK** High Security Cylinders.

● (IC) INTERCHANGEABLE CORE

Interchangeable Core locks will accept compatible 6 or 7-Pin cores with BEST, FALCON and ARROW.

● (ICSC) INTERCHANGEABLE CORE: Indicates function available with **Schlage Full Size Format** Interchangeable Core. Corbin, Sargent and Yale format also available.

FINISHES

Architectural plated finishes.

Electrified Lever Trim

GRADE 1 Rim and Vertical Rod Type Exit Device



Cal-Royal's electrified lever trim provides remote locking and unlocking capabilities using industry safety standards. The 24V DC solenoid can be energized from a distant controller, thus allowing access control of the opening.

The control of stairwells in high-rise buildings is a common application for this trim, where electric pullback of the exit device's latch bolt is cost prohibitive or not required. This is especially practical in applications where fire/life safety codes require a "fail-safe" condition which is not an option with electrified latch pullback devices. Because the current draw is quite low there is no need for a more expensive power supply to provide the surge current.

Features

- Continuous duty solenoids used to insure trouble-free operation
- Internally mounted solenoid to ease installation (no special door prep required)
- No hassle 3-year warranty

Options

- Available Fail Safe (Electrically Locked) or Fail Secure (Electrically Unlocked)
- Voltage options – 12V or 24V (AC/DC)
- Request to Enter Switch (REE) available
- CRU2 – Current Reduction Unit to improve solenoid life in "continuously on" applications

Specifications

Solenoid.....Continuous Duty 24VDC

Operating Voltage....12 or 24VAC/DC + OR – 10%
(must specify 12 or 24 volts when ordering)

Amperage.....260mA@12V / 160mA@24V

Coil Resistance.....12V=49Ω / 24V=159Ω

To order, Specify:

OPTIONS: FAIL SAFE (FS)

FAIL SECURE (FSE)

ITEM#	DESCRIPTION
FS12	FS12 FAIL-SAFE OPTION 12V AC/DC
FS24	FS24 FAIL-SAFE OPTION 24V AC/DC
FSE12	FSE12 FAIL-SECURE OPTION 12V AC/DC
FSE24	FSE24 FAIL-SECURE OPTION 24V AC/DC

TO ORDER other design add "ESC98", "ATESC98", "RLESC98", "TUBESC98"
e.g. FSE24**ATESC98** for ESC98 in AT design or FSE24**RLESC98** for ESC98 in RL design

TO ORDER heavy duty design add **HD** or **TS** to Item#
e.g. FS12**HD** or FS12**TS**



(ELR) Electric Latch Retraction

Our motor driven electrified latch pullback exit device allows for remote keyless access control in high occupancy / high traffic conditions where exit devices are required. Common applications include conditions such as hospitals, airports, schools, churches and they are commonly specified in applications that require automatic door openers. The device may be continuously energized allowing for a push / pull condition if desired.

Features:

- Available on 9800 Series, including rim, vertical rod, concealed vertical rod fire-rated devices
- MM3 Smart Module: On board diagnostics with audible feedback for adjustment and power issues
- “PTS” (Push to Set Technology): 5 second electronic adjustment for easy post installation adjustment
- Electric dogging rated for continuous duty - Auto retraction if dogged push pad is pulled from position
- Low current draw
- Up to 500’ wire run with 2-18ga wire - Long wire runs provides installer with convenience of placing the locking device power supply in a centralized location; i.e. the same closet as the access panel
- 6’ cable with Quick Connect for MM3 module to easily connect to power supply lead
- 3-year “No Hassle” warranty

Specifications:

- Voltage – 22 to 28 VDC
- System protection – unit shutdown when voltage exceeds 28VDC
- Average In-rush Current – 1A; Average Hold Current -180mA
- PTS adjustment – approx. 1/4”
- Wire run: 500’ with 18ga wire; 700’ with 16ga wire

To order, specify:

- Prefix **ELR** before PART #

Note: When using electrified hinge, you must use prefix ELELRn + hinge item code, where “n” is equal to number of wires. For example: ELELR4 + BB31.



**FOR FIELD INSTALLATION
USE FLR2298 KIT**

**MUST USE CRP POWER SUPPLIES
TO HONOR WARRANTY (see page 15)**

Signal Switch RX and LX

RX (request to exit) signal switch is used to signal the use of an opening from the push side. When the push pad is depressed, the switch is activated. These devices are equipped with an internal SPDT (single pole double throw) switch that monitors the touch bar.

LX (latch bolt monitoring) signal switch monitors both egress and access of an opening. When the latch bolt is retracted, the switch is activated. These devices are equipped with an internal SPDT (single pole double throw) switch that monitors the latch bolt position.

LX and **RX** switches can be combined.

LX, RX switches can be used in combination with ELR (electric latch retraction) option.

Specifications

RX or **LX**.....Switch rated 0.5 amps @ 24VAC/DC resistive
Low current **RX** or **LX**.Switch rated 0.5 amps @ 24VAC/DC resistive
For Factory Installed:

To Order, Specify:

Prefix: - **RX9800**.....Request to Exit switch for field installation
LX9800.....Latch bolt Monitoring switch for field installation
LXR9800.....Latch bolt Monitoring/Request to Exit Combination

Heavy Duty Digital Exit Trims

MECHANICAL CRCODE101

Features

- Heavy Duty
- Designed for 7700 and 9800 Series
- Single code (up to 8000 code combinations)
- Weather-resistant finish
- Code can be changed anytime without dismounting
- Full size, non-handed lever handle
- Easy Installation
- Reversible Handing

ELECTRONIC CRCODE007

Features

- Dual mode for code free entry either mechanically by key or electronically thru the keypad
- Designed for 7700 and 9800 Series
- Can store up to 90 different numeric user codes in 4, 5 or 6 digits
- Settings remain in memory when batteries are removed
- Audible alarm sounds after 3 incorrect attempts
- Connections available for remote release switch and automatic lock activation when linked to fire alarm system
- Can be used as STOREROOM or CLASSROOM function
- Factory default set as STOREROOM function
- Fast and easy programming via master code

CR4000 TRILOGY® KEYLESS EXIT TRIM

Features

- Clutch mechanism insures long life and durability
- Fingertip and/or Windows Programmable
- 2000 User Codes: Master, manager, supervisor and users
- Real Time Clock for up to 40,000 Event Time/Date-Stamped Audit Trail
- Up to 500 Lock/Unlock Schedules (with Time Zone Support)
- Rugged 12-Button Metal Keypad
- Non-Handed; Fully Field Reversible
- Adaptable to most major manufacturers of standard RIM and IC RIM Cylinders
- Battery operated; uses 5 AA batteries
- Optional Interchangeable Core available with Best, Falcon, Arrow Small Format and Schlage Full Size Format IC Cores

MECHANICAL CRCODE204

Features

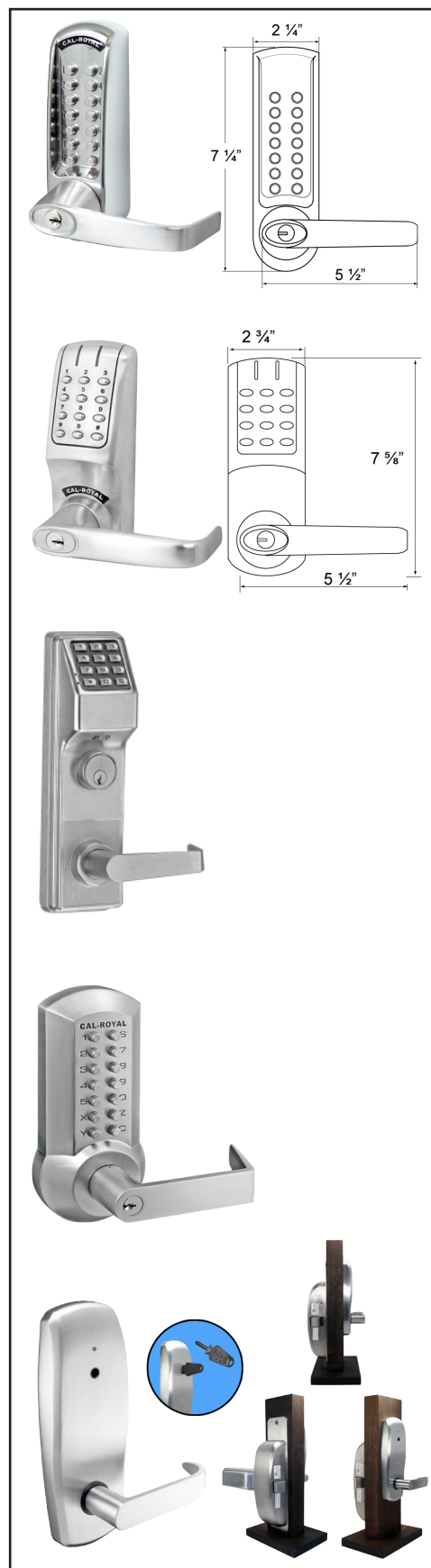
- Breakaway Lever Design
- Easy On-Door Code Change
- Weather Resistant
- Code-Free Option (Passage)
- Non-Handed
- 1 - 12 digit Length Code
- Thousands of Possible Code Combinations
- Single Code User
- Applications: Offices, Schools, Hospitals, Apartments, Hotels/Motels, Residential, Commercial and Public Buildings
- Door Thickness: 1 3/4" - 2"

NEW ITEM

KABA® - Cal-Royal Combination

Cal-Royal's Exit hardware devices combined with Kaba InSync CP provide a variety of alternatives when addressing community access control. Recommended for applications such as controlling building entry openings, common area rooms and doors with exit devices. InSync CP are available as stand-alone battery operated door locks designed to work in conjunction with Cal-Royal's Exit Hardware Devices.

KABA InSync CP is not sold through CAL ROYAL. For inquiries and information on InSync line of products please visit www.kabamultihousing.com



Power Supplies for Electrified Exit Devices



The CRPS1N is a heavy duty, high quality, low cost solution for powering a single latch retracting exit device. The solid-state design insures years of trouble-free operation. The power supply delivers raw, unregulated DC current which is ideal for the extreme in-rush requirement of most motor driven electric latch retracting exit devices. The power supply comes housed in a sturdy, yet compact metal enclosure.

CRPS1N



Features:

- Power supply delivers the necessary high current in-rush for a single exit device
- Solid-state design eliminates problems associated with mechanical relays
- Single input/output
- No hassle 2-year warranty



Specifications:

- Input voltage – 120 VAC
- Output voltage – 24 VDC unregulated @ 1A
- Temperature range – 0 to 120°F
- 1 Solid-State input/output (input triggered by dry contact)
- LEDs – RED = Power indicator
GREEN = Channel on
- Enclosure dimensions: 10" x 10" x 4"

The CRPS2 Series power supplies are high quality, cost effective solution for powering two electric latch-retracting exit devices. These power supplies provide the necessary surge current that most latch-retracting exit devices require. The CRPS2 Series offers features found on power supplies costing much more; and the solid-state design and careful attention to detail make the CRPS2 Series ideal choice for the discerning user who requires a power supply that can offer years of trouble-free operation.

CRPS2 CRPS2BB



Features:

- Delivers the necessary in-rush current to power two latch pullback exit devices.
- Two independent inputs/outputs
- Solid-state design eliminates Mechanical problems associated with relays
- Thermal overload sensing reduces risk of failure due to overheating
- Fire alarm disconnect link
- Inputs triggered by dry contact
- Intelligent short circuit detection detects shorts much faster than fuses and isolates the short to the individual output
- Removable Euro-style terminal blocks allow for easy installation
- UL Pending at time of print
- No hassle 2-year warranty

Additional Features (CRPS2BB Only):

- Efficient battery backup/charging circuitry with zero voltage drop at power loss
- Solid state reverse polarity protection for battery connections
- Audible alert when sensing AC power failure & low battery (batteries not included)
- Output Voltage – 24 VDC unregulated @ 2.3A
- Enclosure dimensions: 12.5" x 15" x 4"

Specifications:

- Input Voltage – 120 VAC
 - Output Voltage – 24 VDC unregulated @ 2A**
 - Temperature Range – 0° to 120°F
 - 1 Solid-State input/output (input triggered by dry contact)
 - LEDs – RED = Power indicator
GREEN = Channel on
 - Enclosure dimensions: 10" x 10" x 4" **
- **CRPS2 only**

The CRSW3 power supply is a low cost, regulated switching power supply. It is designed specifically to supply power to low current DC devices such as mortise locks, cylindrical locks and electric strikes. The CRSW3 supplies 2.4A @ 27VDC and provides (3) non-fused outputs. The CRSW3 comes housed in a 10" x 10" x 4" sturdy metal enclosure.



CRSW3

Features:

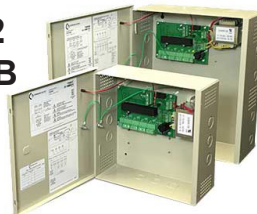
- Adjustable output voltage (22-27V under load)
- No hassle 2-year warranty

Specifications:

- Input voltage – 110 or 240VAC
- Output voltage – 2.4A @ 27VDC
- (3) Non-fused outputs
- Enclosure dimensions : 10" x 10" x 4"

CRPS202/202B linear design makes it a perfect match for electric locks, motor driven exit devices, electric strikes, and mag locks.

CRPS202 CRPS202B



Features:

- Built to run up to 2 locks, exit trim and LP Motor Kits
- Interruption-free battery back-up
- Door mounted LED Power Indicator
- Over-voltage protection
- Regulated, independent battery charging
- Fire alarm link
- No hassle 2-year warranty

Specifications:

- Input voltage – 120 VAC, 60 Hz
- Input Fuse: 2 Amp Fuse @ 250VAC
- Output voltage – 2A @ 24VDC
- Temperature range: 0 to 49° C; 32 to 120° F
- Maximum humidity: 85%

The CRPS5 power supply is a regulated, linear power supply rated at 5 Amps @ 24VDC. Its state-of-the-art, solid-state design offers a flexible and cost effective solution to powering and controlling low current DC locking devices. It is available in 4, 6, and 8 I/O models.

CRPS5 (5 Amps, 1 I/O)

OPTIONS:

- CRPS5-4 (1.25 Amps, 4 I/O)
- CRPS5-6 (0.83 Amps, 6 I/O)
- CRPS5-8 (0.625 Amps, 8 I/O)



Features:

- Adjustable output voltage from 24-27VDC
- Independent, Battery backup charging circuit at 27.6V with Solid-state design and very low voltage loss
- No hassle 2-year warranty

Specifications:

- Input voltage - 110 VAC
- Output voltage - 24VDC @ 5A continuous current
- Up to (8) Solid-state inputs (specify dry contact or voltage trigger)
- Up to (8) Solid-state outputs
- Thermal auto-resettable fuses



MCVR9800 & FMCVR9800 Series

Optional Less Bottom Rod (LBR)

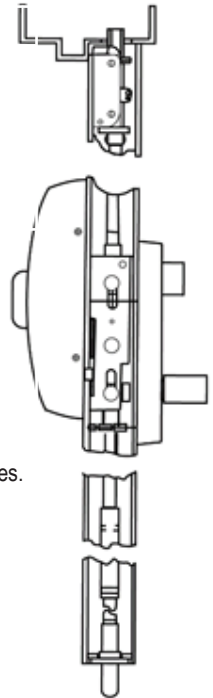
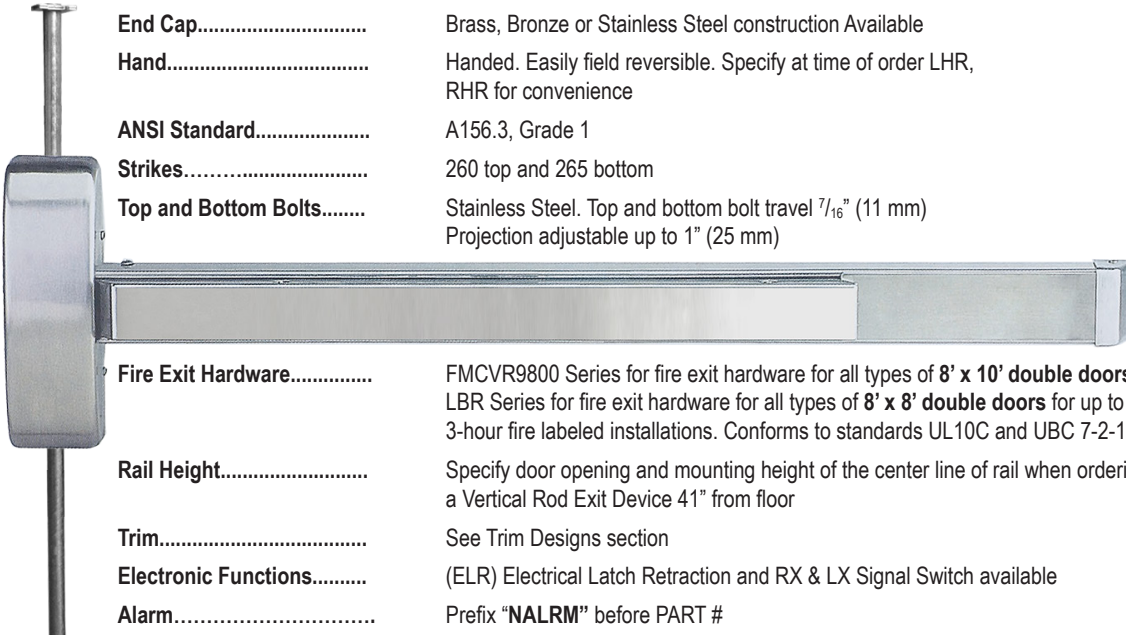
GRADE 1, Concealed Vertical Rod Exit Device for Metal Doors



LIFETIME WARRANTY	BHMA™ CERTIFIED Be Safe. Be Secure. Look for the Mark.	MEETS <i>The Buy American Act</i>	UL US 3 HOUR FIRE RATED UL10C, UBC7-2-1997
--------------------------	---	---	---

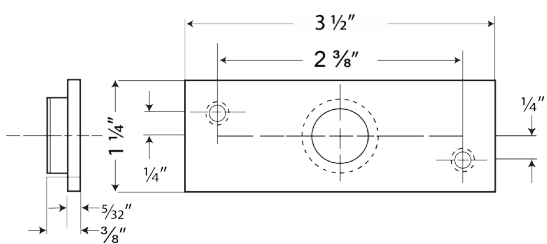
Specifications

LBR (Optional)	No Bottom Strike. Free access for wheel chairs, stretchers and carts which eliminates tripping potential and disfiguration of floors due to dragging of bottom bolts.
For Doors	Metal. 1 3/4" (44.5 mm) minimum thickness 4 1/2" (114 mm) minimum stile width
Top Chassis	Steel
Chassis Cover	Stainless Steel or Non-ferrous plated material
Mounting	Furnished standard with machine screws
End Cap	Brass, Bronze or Stainless Steel construction Available
Hand	Handed. Easily field reversible. Specify at time of order LHR, RHR for convenience
ANSI Standard	A156.3, Grade 1
Strikes	260 top and 265 bottom
Top and Bottom Bolts	Stainless Steel. Top and bottom bolt travel 7/16" (11 mm) Projection adjustable up to 1" (25 mm)



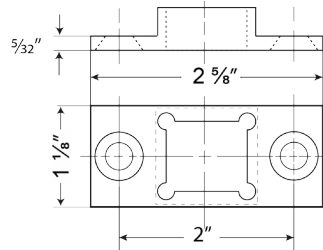
Fire Exit Hardware	FMCVR9800 Series for fire exit hardware for all types of 8' x 10' double doors , LBR Series for fire exit hardware for all types of 8' x 8' double doors for up to 3-hour fire labeled installations. Conforms to standards UL10C and UBC 7-2-1997 codes.
Rail Height	Specify door opening and mounting height of the center line of rail when ordering a Vertical Rod Exit Device 41" from floor
Trim	See Trim Designs section
Electronic Functions	(ELR) Electrical Latch Retraction and RX & LX Signal Switch available
Alarm	Prefix " NALRM " before PART #
Dogging Feature	Cylinder dogging available for non-rated applications

MODEL	ACTUAL LENGTH	MAX CUT DOWN	DOOR SIZE
M98CVR3684, FM98CVR3684, M98CVR3696, FM98CVR3696, M98CVR36120, FM98CVR36120	32"	6"	30" to 36" door width
M98CVR4896, FM98CVR4896, M98CVR48120, FM98CVR48120	44"	12"	36" to 48" door width



260 TOP STRIKE

- For applications metal frames
- Stainless Steel



265 BOTTOM STRIKE

- Furnished with expansion shields
- Mortised into floor
- Stainless Steel

WCVR9800 & FWCVR9800 Series

Optional Less Bottom Rod (LBR)

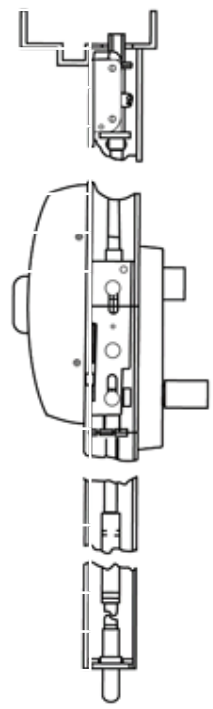
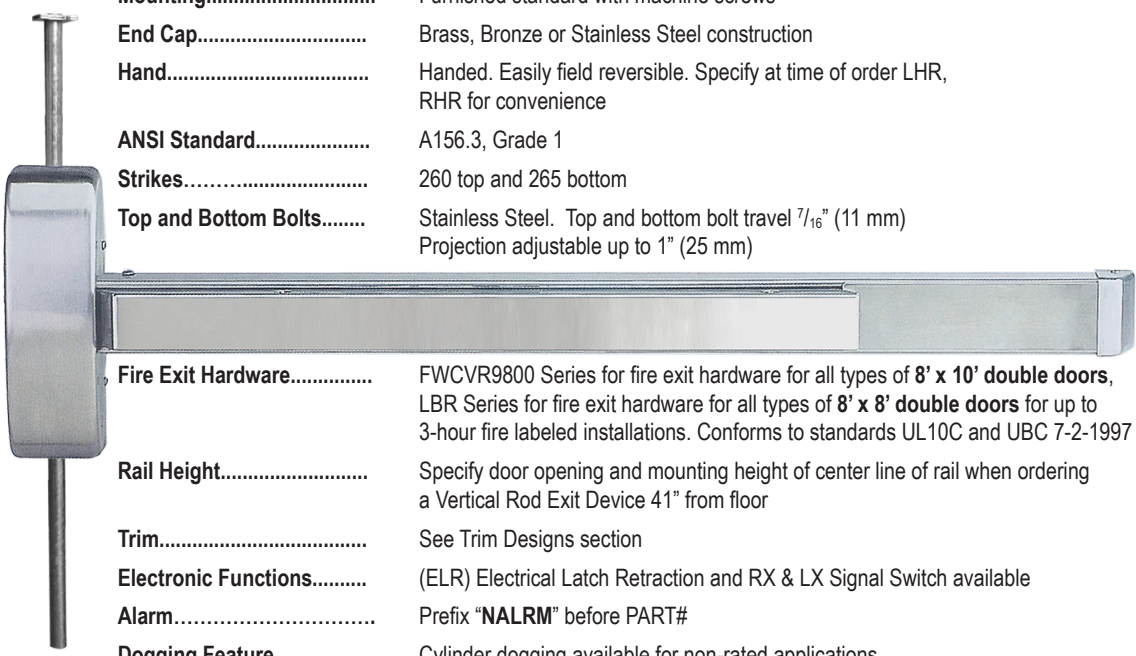
GRADE 1, Concealed Vertical Rod Exit Device for Wood Doors



LIFETIME WARRANTY	BHMA™ CERTIFIED <small>Be Safe. Be Secure. Look for the Mark.</small>	MEETS <i>The Buy American Act</i>	UL US 3 HOUR FIRE RATED UL10C, UBC7-2-1997
--------------------------	--	---	---

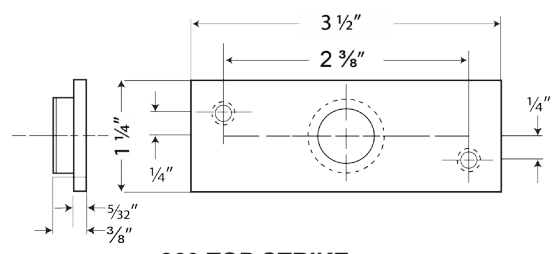
Specifications

LBR (Optional).....	No Bottom Strike. Free access for wheel chairs, stretchers and carts which eliminates tripping potential and disfiguration of floors due to dragging of bottom bolts.
For Doors.....	Wood. 1 3/4" (44.5 mm) minimum thickness 4 1/2" (114 mm) minimum stile width
Top Chassis.....	Steel
Chassis Cover.....	Stainless Steel or Non-ferrous plated material
Mounting.....	Furnished standard with machine screws
End Cap.....	Brass, Bronze or Stainless Steel construction
Hand.....	Handed. Easily field reversible. Specify at time of order LHR, RHR for convenience
ANSI Standard.....	A156.3, Grade 4
Strikes.....	260 top and 265 bottom
Top and Bottom Bolts.....	Stainless Steel. Top and bottom bolt travel 7/16" (11 mm) Projection adjustable up to 1" (25 mm)



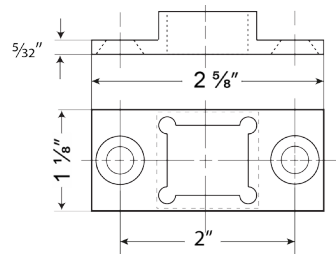
Fire Exit Hardware.....	FWCVR9800 Series for fire exit hardware for all types of 8' x 10' double doors, LBR Series for fire exit hardware for all types of 8' x 8' double doors for up to 3-hour fire labeled installations. Conforms to standards UL10C and UBC 7-2-1997 codes.
Rail Height.....	Specify door opening and mounting height of center line of rail when ordering a Vertical Rod Exit Device 41" from floor
Trim.....	See Trim Designs section
Electronic Functions.....	(ELR) Electrical Latch Retraction and RX & LX Signal Switch available
Alarm.....	Prefix "NALRM" before PART#
Dogging Feature.....	Cylinder dogging available for non-rated applications

MODEL	ACTUAL LENGTH	MAX CUT DOWN	DOOR SIZE
W98CVR3684, FW98CVR3684, W98CVR3696, FW98CVR3696, W98CVR36120, FW98CVR36120	32"	6"	30" to 36" door width
W98CVR4896, FW98CVR4896, W98CVR48120, FW98CVR48120	44"	12"	36" to 48" door width



260 TOP STRIKE

- For applications metal frames
- Stainless Steel



265 BOTTOM STRIKE

- Furnished with expansion shields
- Mortised into floor
- Stainless Steel

MCVR9800, FMCVR9800, WCVR9800 & FWCVR9800

Concealed Vertical Rod Exit Devices For Wood and Metal Doors



Trim Selection

ESCUTCHEON LEVER DESIGN

CONSTRUCTION

- Free-wheeling clutch mechanism
- Grade 1, thru-bolted design
- Non-handed design. Easily field reversible.

FINISHES

Architectural plated finishes

DOOR THICKNESS

Standard 1 3/4"

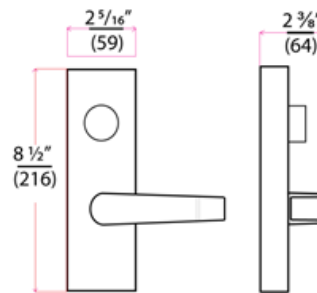
ESCUTCHEON DIMENSIONS

2 5/16" width X 8 1/2" length. Lever length: 4 3/4".

Fits and covers 2 1/8" 161 cutout



CVRESC



Lever Trim Designs



RLCVRESC



ATCVRESC



TUBCVRESC

- CVRESC00 or
- ICCVRESC00 or
- ICSCCVRESC00

ENTRANCE

Clutch Entrance, key locks or unlocks escutcheon trim
ANSI FUNCTION (63) Operates as classroom function

- CVRESC05 or
- ICCVRESC05 or
- ICSCCVRESC05

STOREROOM

Clutch Storeroom, key unlocks lever, lever retracts
latch bolt, otherwise always locked, ANSI FUNCTION (04)

CVRESC30

PASSAGE

Trim always operable and free, ANSI Function (62)

CVRESC40

DUMMY

Dummy Escutcheon trim, ANSI FUNCTION (10)

KEYWAY: 6-Pin solid brass "C" keyway Mortise Cylinder standard. Optional: Schlage E, Schlage C-K, Russwin D1-2-3-4, Corbin 59/60, Sargent LA-LB-LC, Falcon/Weiser E, Arrow A, Yale 8, Yale GA and Kwikset. Can also accept Medeco, Assa, Kaba and **Cal-Royal HSK** High Security Cylinders.

• **(IC) INTERCHANGEABLE CORE:** Interchangeable Core locks will accept compatible 6 or 7-Pin cores with BEST, FALCON and ARROW

• **(ICSC) INTERCHANGEABLE CORE:** Indicates function available with **Schlage Full Size Format** Interchangeable Core. Corbin, Sargent and Yale formats also available.

**FOR ELECTRIFICATION OPTION:
SPECIFY ITEM# UPON ORDERING
FOR ENTRANCE, STOREROOM, AND
PASSAGE ESCUTCHEON LEVER TRIMS**

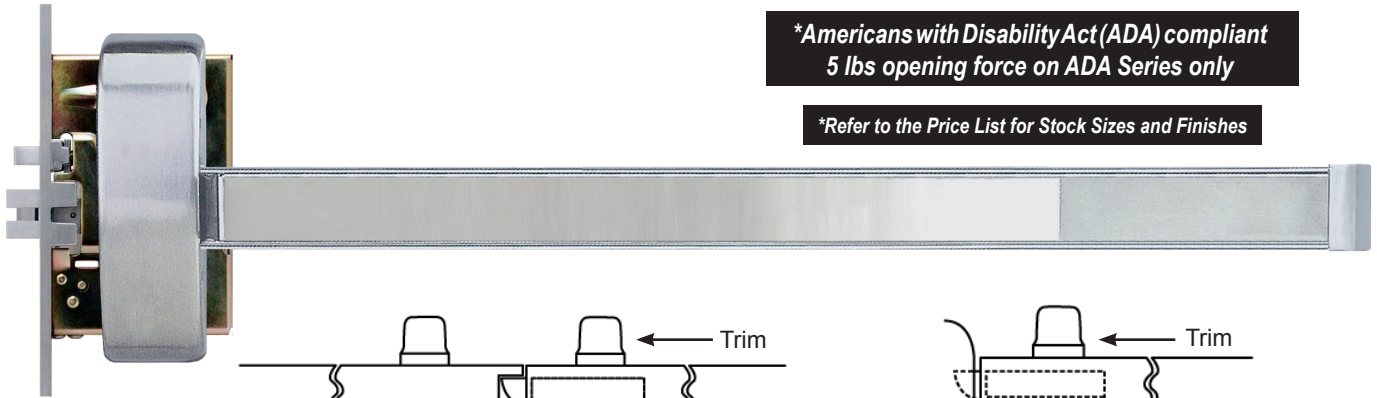
ITEM#	DESCRIPTION
FS12CVR	FAIL-SAFE (FS) OPTION 12V AC/DC
FS24CVR	FAIL-SAFE (FS) OPTION 24V AC/DC
FSE12CVR	FAIL-SECURE (FSE) OPTION 12V AC/DC
FSE24CVR	FAIL-SECURE (FSE) OPTION 24V AC/DC

MR9800 & FMR9800 Series AMR9800 & AFMR9800 ADA Series

GRADE 1, Mortise Lock Exit Device

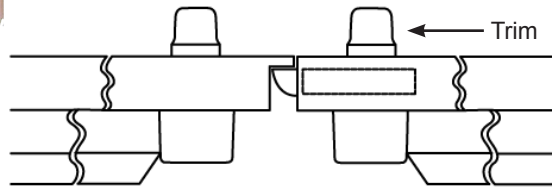


LIFETIME WARRANTY	BHMA CERTIFIED Be Safe. Be Secure. Look for the Mark.	MEETS The Buy American Act	ADA COMPLIANT	UL US 3 HOUR FIRE RATED UL10C, UBC7-2-1997
--------------------------	---	--------------------------------------	---------------	---

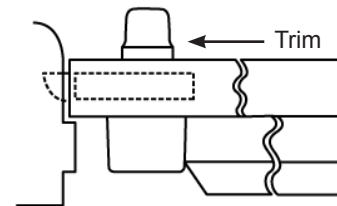


***Americans with Disability Act (ADA) compliant
5 lbs opening force on ADA Series only**

***Refer to the Price List for Stock Sizes and Finishes**



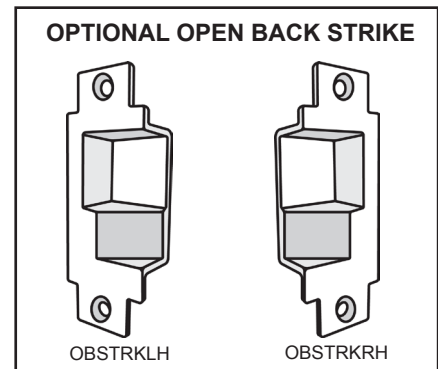
Pair of Doors



Single Doors

Specifications

For Doors.....	Wood / Metal 1 3/4" (44.5 mm) minimum thickness 4 1/2" (114 mm) minimum stile width
ADA Series.....	Prefix "A" before the MODEL #
Chassis.....	Non-ferrous Alloy (Panic Grade), Steel (Fire Grade)
Chassis Cover.....	Non-ferrous plated material
Mounting.....	Furnished standard with wood and machine screws
End Cap.....	Brass, Bronze or Stainless Steel construction
Handing.....	Handed. Non-Reversible. Specify RHR or LHR
ANSI Standard.....	A156.3, Grade 1
Strikes.....	Standard ANSI strike
Fire Exit Hardware.....	FMR9800 Series for fire exit hardware for all types of 8' x 8' double doors for up to 3-hour fire labeled installations. Conforms to standards UL10C and UBC 7-2-1997 codes
Mortise Lock.....	Grade (1) for 1 3/4" (44.5 mm) thick doors. Handed (Non-reversible). Specify RHR or LHR. Fits door prepared for ANSI Standard A115.1
Trim.....	See Trim Designs section
Electronic Functions.....	(ELR) Electrical Latch Retraction and RX & LX Signal Switch available
Alarm.....	Prefix "NALRM" before PART #
Dogging Feature.....	Cylinder dogging available for non-fire rated applications



MODEL SIZE	ACTUAL LENGTH	MAX CUT DOWN	DOOR SIZE
MR9800EO36, FMR9800EO36 MR9805EO36, FMR9805EO36	32"	6"	30" to 36" door width
MR9800EO48, FMR9800EO48 MR9805EO48, FMR9805EO48	44"	12"	36" to 48" door width

***Add prefix "A" before MODEL # for ADA Exit Devices.**

MR9800 & FMR9800 Series

GRADE 1 Mortise Lock Exit Device



Trim Selection

Escutcheon Lever Design

FINISHES

Architectural plated finishes

DOOR THICKNESS

Standard 1 3/4"

ESCUTCHEON DIMENSIONS

2" width X 8 1/2" length. Lever length: 4 3/4".



Also available in TS Trim

IMPORTANT: MR9800 and FMR9800 Mortise Lock case comes standard with exit device. (TRIMS SOLD SEPARATELY)

- MRESC-00 or MRESC00TS or
- ICMRESC-00 or
- ICSCMRESC-00
- ICMRESC-00TS

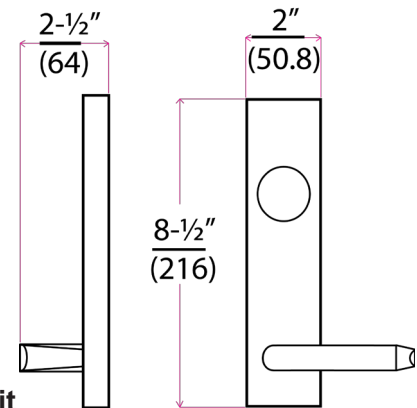
ENTRANCE
Key locks or unlocks lever
Operates as classroom function
ANSI FUNCTION (63)

- MRESC-05 or MRESC05TS or
- ICMRESC-05 or
- ICSCMRESC-05 or
- ICMRESC-05TS

STOREROOM
Key retracts latch bolt, otherwise always locked
ANSI FUNCTION (04)
*MUST USE MR98005EO36/48 Mortise Rim Exit

- MRESC-30
- MRESC30TS

PASSAGE
Trim always operable and free
ANSI FUNCTION (62)
*MUST USE MR98005EO36/48 Mortise Rim Exit



KEYWAY: 6-Pin solid brass "C" keyway Mortise Cylinder standard. Optional: Schlage E, Schlage C-K, Russwin D1-2-3-4, Corbin 59/60, Sargent LA-LB-LC, Falcon/Weiser E, Arrow A, Yale 8, Yale GA and Kwikset. Can also accept Medeco, Assa, Kaba and **Cal-Royal HSK** High Security Cylinders.

- **(IC) INTERCHANGEABLE CORE:** Interchangeable Core locks will accept compatible 6 or 7-Pin cores with BEST, FALCON and ARROW
- **(ICSC) INTERCHANGEABLE CORE:** Indicates function available with **Schlage Full Size Format** Interchangeable Core. Corbin, Sargent and Yale format also available.

**MORTISE LOCK CASE ELECTRIFICATION OPTION:
SPECIFY ITEM# UPON ORDERING**

(MORTISE LOCK CASE COMES STANDARD WITH EXIT DEVICE)

ITEM#	DESCRIPTION
FS12MR	FAIL-SAFE (FS) OPTION 12V AC/DC
FS24MR	FAIL-SAFE (FS) OPTION 24V AC/DC
FSE12MR	FAIL-SECURE (FSE) OPTION 12V AC/DC
FSE24MR	FAIL-SECURE (FSE) OPTION 24V AC/DC

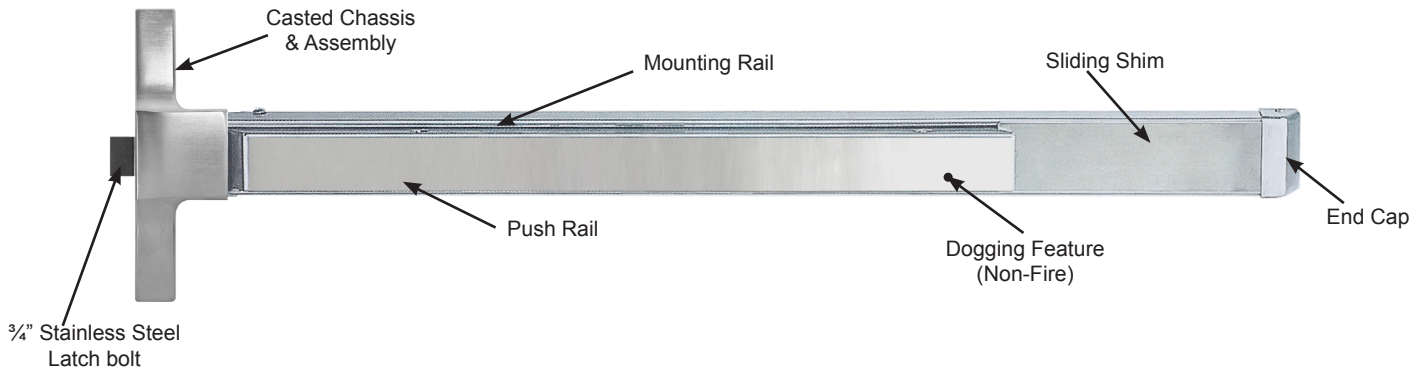
*Must be used with MRESC-00 Trim.

GLS9800 Series

GRADE 1, Rim Type Narrow Stile Exit Device

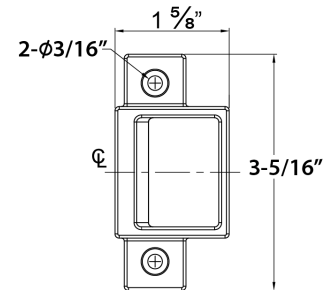


LIFETIME WARRANTY	MEETS <i>The Buy American Act</i>	UL US PANIC & SAFETY
------------------------------	---	-----------------------------------

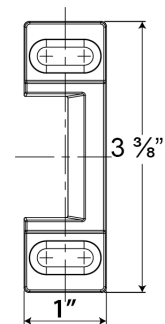


Specifications

For Doors	Wood, Metal or Aluminum Glass doors with 1 3/4" minimum stile width, 1 3/4" thickness for single or double door application
Chassis	Non-ferrous Alloy (Panic Grade)
Cover	Non-ferrous plated material.
Mounting	Furnished with wood and machine screws. Thru-bolts available upon request.
End Cap	Brass, Bronze or Stainless Steel construction
Alarm	Available for 36" bar only. Prefix "NALRM" before PART #
Hand	Non-handed
Latch Bolt	Stainless Steel 3/4" throw
Spring	Stainless Steel throughout
ANSI Standard	A156.3, Grade 1
Rail Assembly	Heavy gauge extruded aluminum body with Stainless Steel push pad
Strike	246 packed standard. Optional 247 strike. (See strike page)
Dogging Feature	Allen-type key furnished standard
Mullion	Available
UL and ULC Listed	GLS9800 Series for Panic & Safety for all types of 4' x 8' single doors and 8' x 8' double doors
Finish	Architectural plated finishes
Electronic Functions	(ELR) Electrical Latch Retraction and RX & LX Signal Switch available



246 STRIKE



247 STRIKE (OPTIONAL)

DIMENSIONS

Push Rail height to finished floor	41" (1041 mm) at center		
Push Rail projection			
Neutral	2 3/4" (70 mm)		
Depressed	1 7/8" (48 mm)		
Center case	8 1/16" x 1 1/8" x 2" (205 mm x 29 mm x 51 mm)		

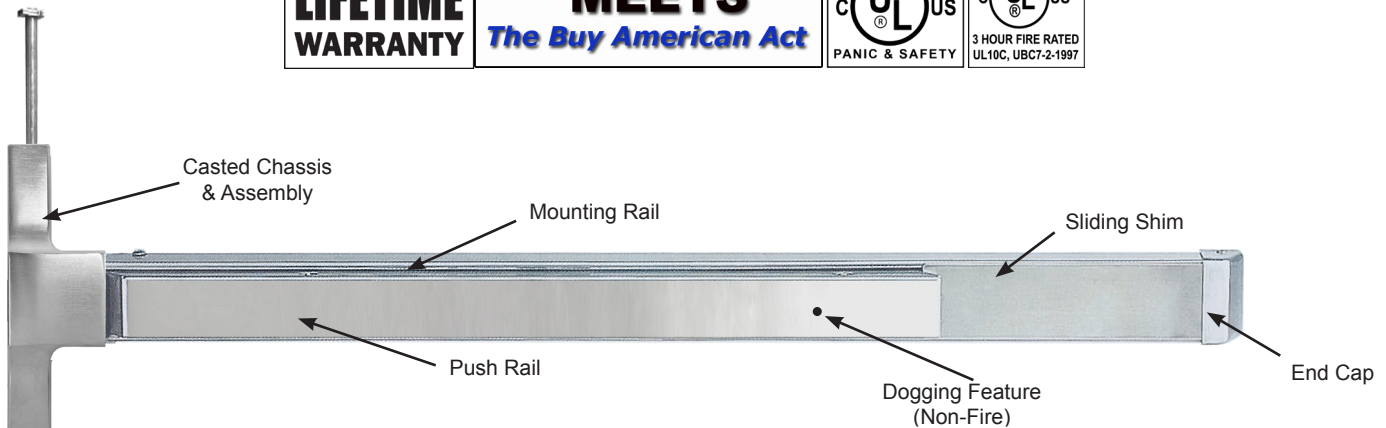
MODEL	ACTUAL LENGTH	MAX CUT DOWN	DOOR SIZE
GLS9800EO36	34 17/32"	10"	30" to 36" width
GLS9800EO48	46 11/32"	12"	36" to 48" width

GLSCVR9800 & FGLSCVR9800 Series

GRADE 1 Concealed Vertical Type, Narrow Stile Exit Device
Optional Less Bottom Rod (LBR)

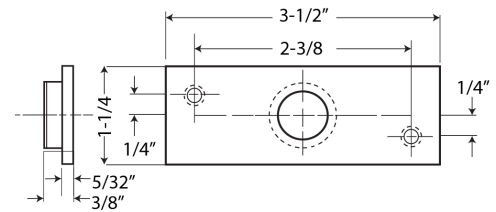


LIFETIME WARRANTY	MEETS <i>The Buy American Act</i>	PANIC & SAFETY	3 HOUR FIRE RATED UL10C, UBC7-2-1997

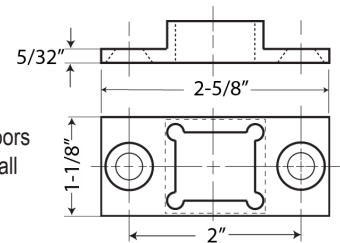


Specifications

For Doors.....	Metal or Aluminum Glass doors with 1 3/4" minimum stile width, 1 3/4" thickness for single or double door application
Top Chassis.....	Non-ferrous Alloy (Panic Grade)
Cover.....	Non-ferrous plated material
Mounting.....	Furnished with wood and machine screws
End Cap.....	Brass, Bronze or Stainless Steel construction
Hand.....	Handed. Specify RHR or LHR
Top and Bottom Bolts.....	Stainless Steel. Top and bottom bolt travel 7/16" (11 mm) Stainless Steel adjustable to 1" (25 mm)
Spring.....	Stainless Steel throughout
ANSI Standard.....	A156.3, Grade 1
Rail Assembly.....	Heavy gauge extruded aluminum body with Stainless Steel push pad
Strike.....	260 Top and 265 Bottom strikes packed standard (See strike page)
Dogging Feature.....	Allen-type key furnished standard
Mullion.....	Available
UL and ULC Listed.....	GLSCVR9800 Series for Panic & Safety for all types of 4' x 8' single doors and 8' x 8' double doors for Panic & Safety. FGLSCVR9800 Series for all types 6' x 7' pair of doors for up to 3 hour fire labelled installations. Conforms to standards UL10C and UBC-7-2-1997
Finish.....	Architectural plated finishes
Electronic Functions.....	(ELR) Electrical Latch Retraction and RX & LX Signal Switch available



260 TOP STRIKE



265 BOTTOM STRIKE

DIMENSIONS

Push Rail height to finished floor	41" (1041 mm) at center
Push Rail projection	
Neutral	2 3/4" (70 mm)
Depressed	1 7/8" (48 mm)

Center case 8 1/16" x 1 1/8" x 2" (205 mm x 29 mm x 51 mm)

MODEL	ACTUAL LENGTH	MAX CUT DOWN	DOOR SIZE
GLSCVR983684, FGLSCVR983684	34 17/32"	6"	30" to 36" width
GLSCVR984884	46 11/32"	18"	30" to 48" width

Trim Selection

ESCUTCHEON LEVER DESIGN

CONSTRUCTION

- Free-wheeling clutch mechanism.
- Grade 1, thru-bolted design. Reversible design
- Hardened steel heavy duty tailpiece. Available for rim and concealed vertical rod exit devices
- Standard 6-Pin Schlage "C" Mortise Cylinder included

DOOR THICKNESS

Standard 1 3/4"

ESCUTCHEON DIMENSIONS

1-13/16" width X 8" length

Lever length: 5"



IMPORTANT: GLS7700 and GLSCVR7700 Trims are interchangeable with GLS9800 and GLSCVR9800 Trims

ELECTRIFICATION NOT AVAILABLE FOR TRIM.
Electrical Latch Retraction (ELR), Request to Exit (RX) and Latchbolt Monitoring (LX) available for Exit Device only.

GLSRIM9800

GLSCVR9800

Ⓢ ICGLSRIM9800

Ⓢ ICSCGLSRIM9800

Ⓢ ICGLSCVR9800

Ⓢ ICSCGLSCVR9800

ENTRANCE

Clutch free-wheeling Entrance, key locks or unlocks escutcheon trim ANSI FUNCTION (63) Operates as classroom function

CVR is used for Concealed Vertical Rod Exit Device
RIM is used for Rim Type Exit Device

GLSRIM9805

GLSCVR9805

Ⓢ ICGLSRIM9805

Ⓢ ICSCGLSRIM9805

Ⓢ ICGLSCVR9805

Ⓢ ICSCGLSCVR9805

STOREROOM

Clutch free-wheeling Storeroom, key unlocks lever, lever retracts latch bolt, otherwise always locked ANSI FUNCTION (04)

CVR is used for Concealed Vertical Rod Exit Device
RIM is used for Rim Type Exit Device

GLSRIM9830

GLSCVR9830

PASSAGE

Trim always operable and free ANSI FUNCTION (62)

CVR is used for Concealed Vertical Rod Exit Device
RIM is used for Rim Type Exit Device

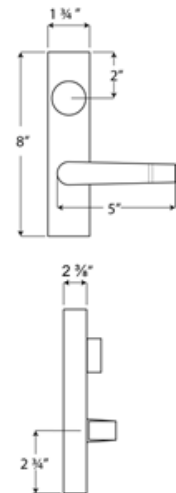
GLSRIM9840

GLSCVR9840

DUMMY

Dummy Escutcheon trim ANSI FUNCTION (10)

CVR is used for Concealed Vertical Rod Exit Device
RIM is used for Rim Type Exit Device



AVAILABLE UPON REQUEST
AT, RL, TUB Lever Design

KEYWAY: 6-Pin solid brass "C" keyway Rim Cylinder standard. Optional: Schlage E, Schlage C-K, Russwin D1-2-3-4, Corbin 59/60, Sargent LA-LB-LC, Falcon/Weiser E, Arrow A, Yale 8, Yale GA and Kwikset. Can also accept Medeco, Assa, Kaba and **Cal-Royal HSK** High Security Cylinders.

Ⓢ(IC) **INTERCHANGEABLE CORE:** Interchangeable Core locks will accept compatible 6 or 7-Pin cores with BEST, FALCON and ARROW

Ⓢ(ICSC) **INTERCHANGEABLE CORE:** Indicates function available with **Schlage Full Size Format** Interchangeable Core. Corbin, Sargent and Yale format also available.

Trim Selection

PULL DESIGN - FOR GLS9800 RIM EXIT DEVICE ONLY



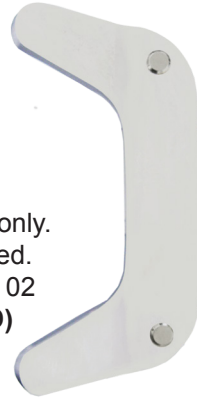
98GLSNL
Ⓜ IC98GLSNL
Ⓜ ICSC98GLSNL

Outside by pull and key.
 Key retracts latch bolt.
 ANSI function – 03
(SPECIFY HANDING)



98GLSUP

Outside by pull only.
 Pull when dogged.
 ANSI function – 02
(NON-HANDED)



GLSRIMEOP

Outside cover plate
 only.
ANSI function – 10

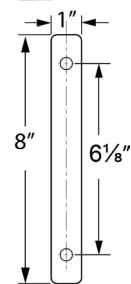
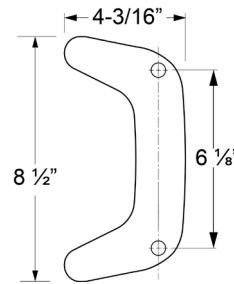
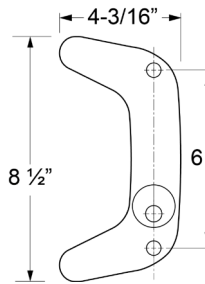


KEYWAY

Standard 6-Pin solid brass “C”
 keyway Rim Cylinder included.

FINISHES

Architectural plated finishes.



IMPORTANT: GLS7700 and GLSCVR7700 Trims are interchangeable with GLS9800 and GLSCVR9800 Trims



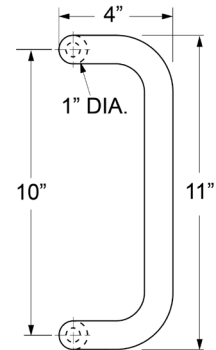
98GLSCYL-1



Ⓜ IC98GLSCYL-1
Ⓜ ICSC98GLSCYL-1



OFSTPUL-10
(REVERSIBLE)



KEYWAY: 6-Pin solid brass “C” keyway Rim Cylinder standard. Optional: Schlage E, Schlage C-K, Russwin D1-2-3-4, Corbin 59/60, Sargent LA-LB-LC, Falcon/Weiser E, Arrow A, Yale 8, Yale GA and Kwikset. Can also accept Medeco, Assa, Kaba and **Cal-Royal HSK** High Security Cylinders.

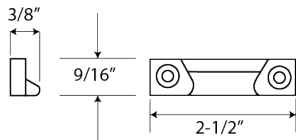
Ⓜ (IC) INTERCHANGEABLE CORE: Interchangeable Core locks will accept compatible 6 or 7-Pin cores with BEST, FALCON and ARROW

Ⓜ (ICSC) INTERCHANGEABLE CORE: Indicates function available with **Schlage Full Size Format** Interchangeable Core. Corbin, Sargent and Yale format also available.

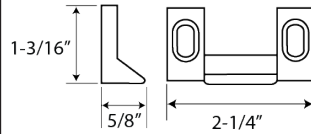
Strike & Accessories

Strikes for use with 9860 vertical rod exit device All strikes are black nylon coated

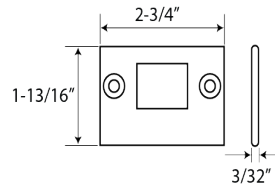
221
Standard for 9860. Applied to surface of floor or to a flat threshold. Standard packaging.



227
Applied to surface of stop. No mortise required. Standard packaging.

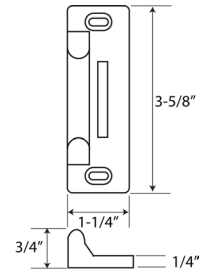


233
Bottom stike. Alternate bottom strike. Flush mounting, stainless steel. Furnished with expansion shields. Requires mortise on the floor.



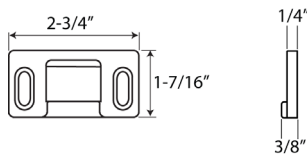
Strikes for use with 9800 rim type exit device

239
For 9800 & F9800 surface applied. Standard packaging.



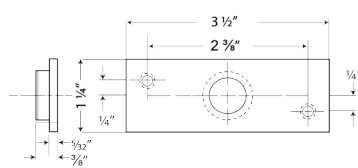
RIM238

Strike for 2 3/8" Backset Application

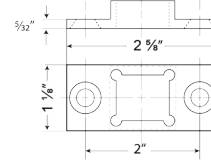


Strikes for FMCVR9800, MCVR9800, WCVR9800, FWCVR9800, GLSCVR9800 fire and non-fire exit device

260 TOP STRIKE

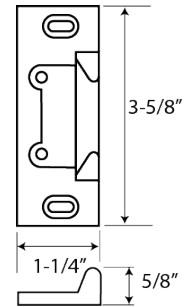


265 BOTTOM STRIKE



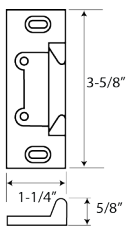
Strike for use with F9800 rim fire exit device

245
For F9800 surface applied. Standard packaging.



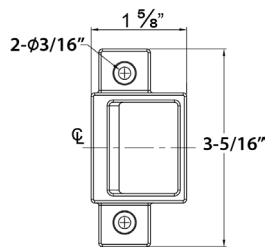
Strikes for use with F9860 vertical rod fire exit device

245
For F9800 surface applied. Standard packaging.

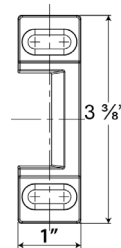


Strikes for use with GLS9800 Narrow Stile Exit Device

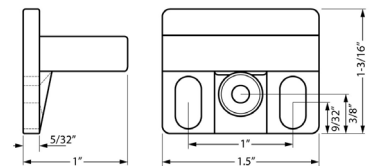
246
Used on frames with blade stop or integral stop. Surfaced applied or mortised. Standard packaging.



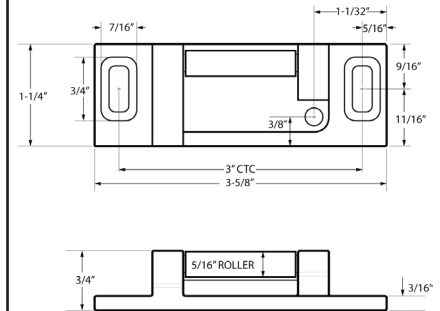
247
Applied to surface of stop. No mortise required.



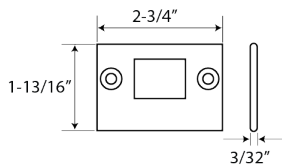
Strike for ADA9800 exit devices



ADA Roller Strike for 2200 and 9800 exit devices

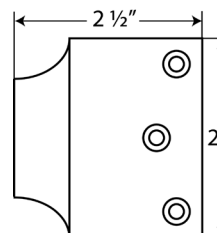


233
Bottom strike for F9860. Flush mounting stainless steel. Furnished with expansion shields. Requires mortise in the floor. Standard packaging



Overlapping Strikes

N251
Surface applied. Used on inactive leaf for device on active leaf of pair of doors without mullion.



Accessories



LFF	
<p>Lock front filler</p>	
SF	
<p>Strike filler</p>	
GLASS BEAD SHIM KITS	
<p>801 – For rim type, 1/8" thick 806 – For vertical type, 1/8" thick 812 – For fire rated type, 1/8" thick</p>	
CYLINDER DOGGING KITS	
<p>TO ORDER: Prefix "CD" before PART #. Available for all 9800 Series devices except fire exit hardware. Cylinder dogging with mortise cylinder is located on the mounting insert lock bolt in retracted position.</p> <p>KIT ONLY: Use PART # 36CD9800 for 36" and 48CD9800 for 48" devices. Specify finish.</p>	<p style="text-align: center;">CYLINDER DOGGING KIT</p> <ul style="list-style-type: none"> ● (IC) INTERCHANGEABLE CORE: Interchangeable Core locks will accept compatible 6 or 7-Pin cores with BEST, FALCON and ARROW ● (ICSC) INTERCHANGEABLE CORE: Indicates function available with Schlage Full Size Format Interchangeable Core. Corbin, Sargent and Yale format also available.

Fire Exit Hardware Selector



FIRE EXIT HARDWARE RATING			UL DOOR RATING
APPLICATION	MODEL #	MAXIMUM DOOR OPENING	(A) 3 HOUR
SINGLE DOORS Rim type	F9800EO36 F9820EO48	4'0" X 8'0"	✓
PAIRS OF DOORS Two surface mounted standard vertical rod type or less bottom rod (LBR) application. Prefix LBR before Part # a) Swinging in same direction b) Swinging in opposite direction (double egress)	F9860V3684 X F9860V3684	8'0" X 7'2"	✓
	F9890V3696 X F9890V3696 F9880V4896 X F9880V4896	8'0" X 8'0"	✓
PAIRS OF DOORS Two rim type with Mullion	F9800EO36 F9820EO48	8'0" X 8'0"	✓

All fire rated exit devices in all applications, are also labeled for (B) 1 ½ hour, (C) ¾ hour, (D) 1 hour, (E) ¾ hour.
All fire exit hardware meet UL10C and UBC 7-2-1997 codes.
Includes ADA Series.

HOW TO ORDER INFORMATION

Exit device model number

Panic grade

9800 EO36 Rim type 36" door
9820 EO48 Rim type 48" door
9860 V3684 Vertical rod type 36" x 84"
9890 V3696 Vertical rod type 36" x 96"
9880 V4896 Vertical rod type 48" x 96"
VRRD10 – Rod for 10' non-rated door
9850 V36120 Vertical rod type 36" x 120"
9840 V48120 Vertical rod type 48" x 120"

Fire grade

F9800 EO36 Rim type 36" door
F9820 EO48 Rim type 48" door
F9860 V3684 Vertical rod type 36" x 84"
F9890 V3696 Vertical rod type 36" x 96"
F9880 V4896 Vertical rod type 48" x 96"
F9850 V36120 Vertical rod type 36" x 120"
F9840 V48120 Vertical rod type 48" x 120"

- 1) Specify exit device model number according to size of door.
- 2) Specify ADA option if needed.
- 2) Specify trim selection. For interchangeable core prefix "IC" before Part #. See trim selection pages.
- 3) For vertical rod devices specify LHR (Left Hand Reverse) or RHR (Right Hand Reverse) for convenience easily field reversible, otherwise shipped as LHR.
- 4) Specify finish:
US10B, 32D. See Page 33
- 5) On thru-bolt applications, fire rated vertical rod devices are packed with thru-bolts as standard feature. Thru-bolts are also available for other devices. To order thru-bolts add "SBN" to trim pack.

When ordering separately use following Part #

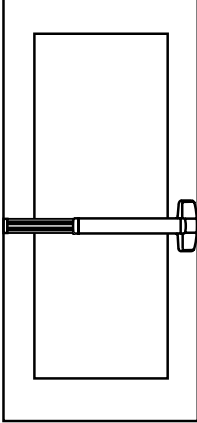
Cal-Royal Part # 357 — Thru-bolts for rim devices, 6 pcs / pack.
Cal-Royal Part # 369 — Thru-bolts for vertical rod devices, 14 pcs / pack.
Cal-Royal Part # 363 — Thru-bolts for rim devices, 6 pcs / pack for 2 ¼" thick doors.
Cal-Royal Part # 375 — Thru-bolts for vertical rod devices, 14 pcs / pack for 2 ¼" thick doors.

Ordering example: 9800E036 ALUM X SBN X ENT00L 26D
F9880V4896 10B X ICSTR05L 10B

9800 Series Fire and Non-Fire Exit Devices ANSI A156.3 Grade 1 Selector Chart

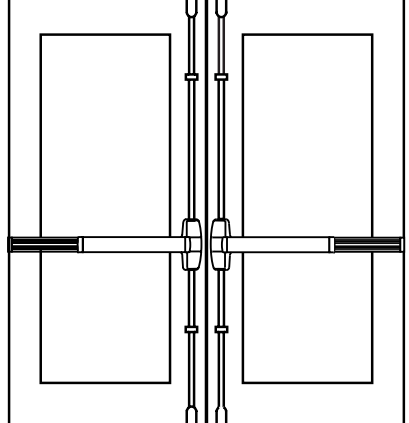


SINGLE DOOR



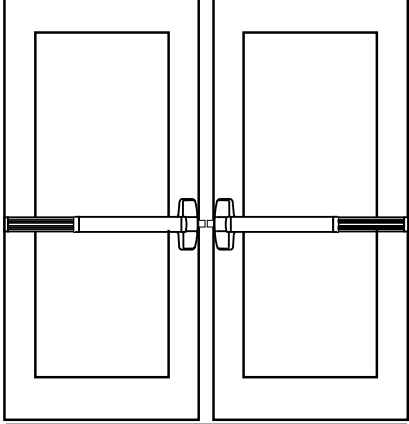
Vertical rod type or Rim type Surface applied 2 point lock. Surface application.

PAIR OF DOORS WITHOUT MULLION



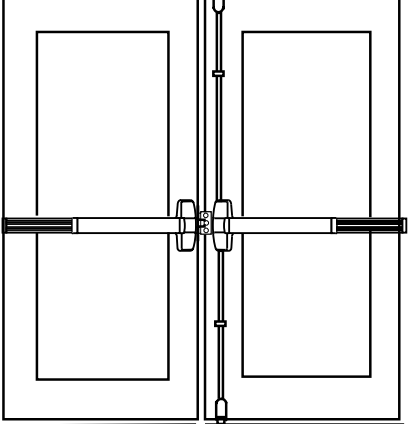
2 Vertical rod type Surface applied 2 point locking both doors. Each door active same direction. Do not use with overlapping astragal.

PAIR OF DOORS WITH MULLION



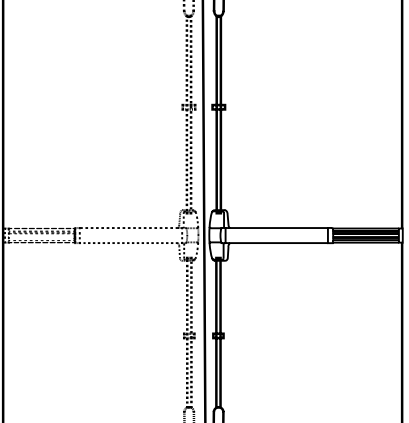
2 Rim type with mullion Two independent active doors with full double door openings when required. Same direction.

PAIR OF DOORS WITHOUT MULLION



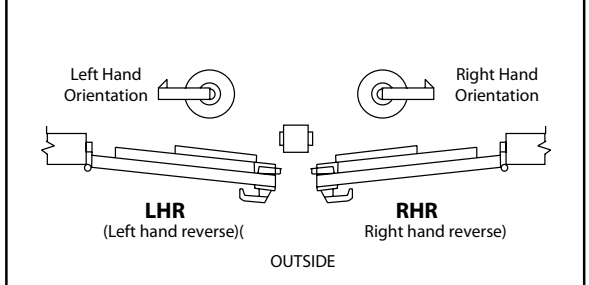
1 Vertical rod and 1 rim type Both devices are surface applied. A coordinator and overlapping strike is recommended.

PAIR OF DOORS WITHOUT MULLION



2 Vertical rod type Double egress surface applied. 2 point locking both doors opposite directions.

HANDING



Left Hand Orientation Right Hand Orientation

LHR **RHR**

(Left hand reverse) (Right hand reverse)

OUTSIDE

CAL-ROYAL PRODUCTS, INC.
6605 FLOTILLA ST., COMMERCE, CA 90040 U.S.A.
TEL: (323) 888-6601 FAX: (323) 888-6699
Website: cal-royal.com * Email: sales@cal-royal.com

Exit Devices Comparison Chart



RIM EXIT DEVICE CONVERSIONS	RIM	VERTICAL ROD	RIM	VERTICAL ROD	CONCEALED VERTICAL ROD	MORTISE RIM	NARROW STILE RIM	NARROW STILE CVR
ARROW	S1200	S1100	S3800 / 1800	S3700	S3600	S3900	S4803	S4601
CAL-ROYAL	9800 / 7700	9860 / 7760	2200 / 4400	2260	MCVR9800 / WCVR9800 / MCVR7700 / WCVR7700	MR9800 / MR7700	GLS9800 / GLS7700	GLSCVR9800 / GLSCVR7700
CORBIN/RUSSWIN	ED8200	ED8400	ED5400 / ED6000	ED4750	ED5800	ED5600	ED4200	ED4800
DETEX	V4000	---	10	20	70	30	V40NS	60
DORMA	8300	8400	9300	9400	9100	9500	AD4300	AD4100
PRECISION	5100	5200	2100 / 100	9800 / 200	2800	2300	2400	2600
SARGENT	2828	2727	8800 / 9898	8700	MD8600 / WD8600	8900	AD8500	AD8410
VON DUPRIN	98 / 99	9827 / 9927	98	9827	9947EO	9975EO	33A	3348
YALE	2100	2110	7100 / 1500	7110 / 1510	7120	7130	7250	7220

