

Alarm Exit Hardware



Features

- 1, 3, 5-minute and continuous alarm type settings available
- ON and OFF power switch
- Alarm sound frequency is 120 db
- Alarm unit has an internal horn. When the push rail is depressed, the horn sounds to provide an audible means of signaling that the door has been opened and breached.
- The key switch to turn alarm off is a standard 1 ¼" cylinder with "C" keyway. The alarm operates on one standard 9-volt transistor battery. When battery is weak the horn will emit an intermittent signal.
- Alarmed units are supplied with a micro switch, which monitors the push rail and the latch bolt and outside trim (if available) for foolproof security on rim devices
- Alarm unit has a signal OC output that can be linked to external alarm control systems
- Easy removal of the alarm unit without the need to dismount the exit device for battery maintenance
- Unit includes **"EMERGENCY EXIT ONLY ALARM WILL SOUND"** decal for application on door or unit

Rim Type Exit Devices

NALRM2200EO36	Alarm rim type 36" door (panic grade)
NALRM222048	Alarm rim type 48" door (panic grade)
FNALRM220036	Alarm rim type 36" door (fire grade)
FNALRM222048	Alarm rim type 48" door (fire grade)

Vertical Rod Type Exit Devices

Prefix **"NALRM"** before MODEL #.

Power Supplies

Power supplies for electrified exit devices are available.
See pages 95-96.

Trim Selection

CLUTCH CYLINDRICAL LEVER

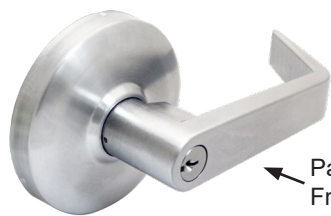
Non-Handed Grade 1 (Clutch Style)

Cylindrical body hardened steel heavy duty tailpiece. For 1 3/4" and 2 1/4" doors. Prefix "THI" before Part # for 2 1/4" door thickness.

Available for Fire and Non-Fire Rated **Rim, SVR, and 3-PT Type Exit Devices**. Rose diameter 3 1/2", lever length 4 3/4". Fits and covers 161 cutout.

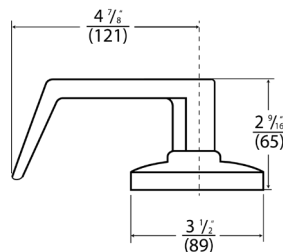
Finishes: US26D, US26, US3, US4, US10B, US10BE, US1

***GN DESIGN ONLY: ENT00L, ICENT00L, STR05L, ICSTR05L, PAS30L, DUM40L IN US32D FINISH, ALL STAINLESS STEEL EXTERIOR. INCLUDES GRADE 304SS LEVER AND ROSE**



GN DESIGN

Patented Clutch Freewheeling



- ENT00L or
- ICENT00L or
- ICSCENT00L4
- SARICENT00L (Sargent)
- RUSICENT00L (Corbin / Russwin)
- YALICENT00L (Yale)

8000K

- STR05L or
- ICSTR05L or
- ICSCSTR05L4
- SARICSTR05L (Sargent)
- RUSICSTR05L (Corbin / Russwin)
- YALICSTR05L (Yale)

PAS30L

DUM40L

ENTRANCE

Key locks and unlocks lever. Operates as CLASSROOM FUNCTION.

ANSI Function (08)

Ball Knob Keylock

STOREROOM

Key operates lever, otherwise always locked.

ANSI Function (09)

PASSAGE

Trim always operable and free.

ANSI Function (14)

DUMMY

Dummy trim. One sided

ANSI Function (02)

KEYWAY: 6-Pin solid brass "C" keyway standard. Optional: Schlage E, Schlage C-K, Russwin D1-2-3-4, Corbin 59/60, Sargent LA-LB-LC, Falcon/Weiser E, Arrow A, Yale 8, Yale GA and Kwikset. Can also accept Medeco, Assa, Kaba and **Cal-Royal HSK** High Security Cylinders.

• (IC) **INTERCHANGEABLE CORE:** Interchangeable Core locks will accept compatible 6 or 7-Pin cores with **BEST, FALCON and ARROW**.

• (ICSC) **INTERCHANGEABLE CORE:** Indicates function available with **SCHLAGE, CORBIN/RUSSWIN, SARGENT and YALE Full Size Format Interchangeable Core**

KEYWAY	+	DESIGN	+	FUNCTION	+	FINISH
BEST, FALCON, & ARROW - SCHLAGE - CORBIN/RUSSWIN - SARGENT - YALE -		<div style="border: 1px solid black; padding: 2px;"> IC ICSC RUSIC SARIC YALIC </div>		<div style="border: 1px solid black; padding: 2px;"> AT SPA TUB* AUG DAN LON TAC </div>		<div style="border: 1px solid black; padding: 2px;"> ENT00L STR05L PAS30L DUM40L </div>

HOW TO ORDER IN LFIC

Example: ICSCENT00L4 US26D
in "SPA" design is
ICSCSPAENT00L4 US26D

**Note: Yale LFIC is only available in GN, AT, SPA lever designs | TUB* is only available in SFIC.

Other Lever Trim Designs

• Available in
SFIC & LFIC



AT

• Available in
SFIC & LFIC



SPA

• Available
in SFIC



TUB

• Available in
SFIC & LFIC
*except YALE LFIC



AUG

• Available in
SFIC & LFIC
*except YALE LFIC



DAN

• Available in
SFIC & LFIC
*except YALE LFIC



LON

• Available in
SFIC & LFIC
*except YALE LFIC



TAC



8000K

Anti-Microbial Coating available in US26D or US32D Only. Use part # "ANTB-TRIM" when ordering.

Trim Selection

RIGID LEVER ESCUTCHEON



CONSTRUCTION

- Grade 1, thru-bolted design, rigid non-clutch, Non-handed design.
- Easily field reversible.
- Hardened steel heavy duty tailpiece.
- Available for Fire and Non-Fire Rated **Rim, SVR, and 3-PT Type Exit Devices.**
- Standard 6-Pin Schlage "C" Mortise Cylinder included

FINISHES

- Powder Coated Aluminum (ALUM)
- Powder Coated Dark Bronze Duranodic (DURO)
- Powder Coated Gold (GOLD)
- Powder Coated Black (US1)

DOOR THICKNESS

Standard 1 3/4". For 2 1/4" thick door use additional PART # TAIL3.

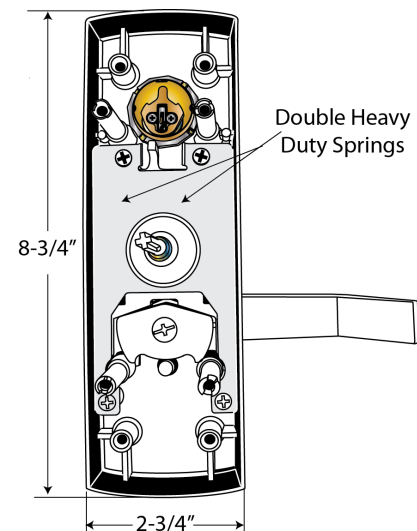
ESCUTCHEON DIMENSIONS

2 3/4" width x 8 3/4" length. Lever length: 4 3/4".

Fits and covers 2 1/8" 161 cutout



NESC2200 or • ICNESC2200 or • ICSCNESC2200	ENTRANCE Rigid Entrance, key locks or unlocks escutcheon trim ANSI Function (08) Operates as classroom function
NESC2205 or • ICNESC2205 or • ICSCNESC2205	STOREROOM Rigid Storeroom, key unlocks lever, lever retracts latch bolt, otherwise always locked ANSI Function (09)
NESC2230	PASSAGE Trim always operable and free ANSI Function (14)
NESC2240	DUMMY Dummy Escutcheon trim ANSI Function (02)



KEYWAY: 6 pin solid brass "C" keyway Mortise Cylinder standard. Optional: Schlage E, Schlage C-K, Russwin D1-2-3-4, Corbin 59/60, Sargent LA-LB-LC, Falcon/Weiser E, Arrow A, Yale 8, Yale GA and Kwikset. Can also accept Medeco, Assa, Kaba and **Cal-Royal HSK** High Security Cylinders.

• **(IC) INTERCHANGEABLE CORE:** Interchangeable Core locks will accept compatible 6 or 7-Pin cores with BEST, FALCON and ARROW

• **(ICSC) INTERCHANGEABLE CORE:** Indicates function available with **Schlage Full Size Format** Interchangeable Core. Corbin, Sargent and Yale format also available.

FOR ELECTRIFIED TRIM OPTIONS SEE PAGE 76

Heavy Duty Mechanical Push Button Lock



MECHANICAL CRCODE204

Features

- Breakaway Lever Design
- Easy On-Door Code Change
- Weather Resistant
- Code-Free Option (Passage)
- Non-Handed
- 1 - 12 digit Length Code
- Thousands of Possible Code Combinations
- Single Code User
- Applications: Offices, Schools, Hospitals, Apartments, Hotels/Motels, Residential, Commercial and Public Buildings
- Door Thickness: 1 3/4" - 2"
- 2-year limited warranty



Electrified Lever Trim

Cal-Royal's electrified lever trim provides remote locking and unlocking capabilities using industry safety standards. The solenoid can be energized from a distant controller, thus allowing access control of the opening. The control of stairwells in high-rise buildings is a common application for this trim, where electric pullback of the exit device's latch bolt is cost prohibitive or not required.

This is especially practical in applications where fire / life safety codes require a "fail-safe" condition which is not an option with electrified latch pullback devices. Because the current draw is quite low there is no need for a more expensive power supply to provide the surge current.

Features

- Continuous duty solenoids used to insure trouble-free operation
- No hassle 3-Year Warranty
- Requires additional door prep

Specifications

Solenoid..... Continuous Duty

Operating Voltage.... 11-30VDC / 10-24VAC

Amperage..... 330mA @ 11V / 140mA @ 30V

Coil Resistance..... 8.2 Ω

Function.... available Fail Safe, Electrically Locked (**EL**)
or Fail Secure, Electrically Unlocked (**EU**)



ITEM#	DESCRIPTION
NESC22-EL ● ICNESC22-EL ● ICSCNESC22-EL	EL (Electrically Locked, Fail Safe), Voltage: 11-30VDC / 10-24VAC
NESC22-EU ● ICNESC22-EU ● ICSCNESC22-EU	EU (Electrically Unlocked, Fail Secure), Voltage: 11-30VDC / 10-24VAC

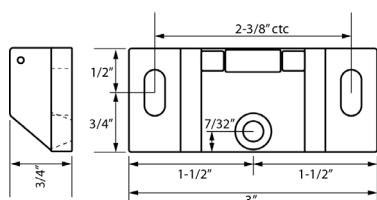
● **(IC) INTERCHANGEABLE CORE:** Interchangeable Core locks will accept compatible 6 or 7-Pin cores with BEST, FALCON and ARROW

● **(ICSC) INTERCHANGEABLE CORE:** Indicates function available with **Schlage Full Size Format** Interchangeable Core. Corbin, Sargent and Yale format also available.

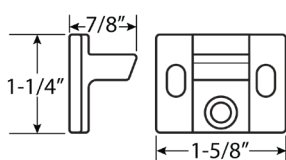
Strikes & Accessories



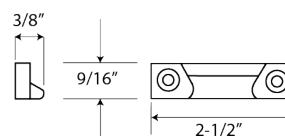
Strikes for 22-3PT & F22-3PT, Fire and Non-Fire Exit Devices



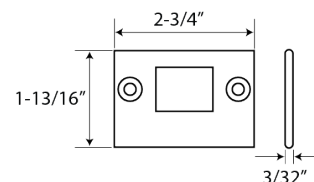
610
Roller Rim Strike,
surface applied.
Standard Packaging.



620
Top Strike.
Standard packaging.



221
Handicap Bottom Strike.
Applied to surface of floor
or to a flat threshold.
Standard packaging.

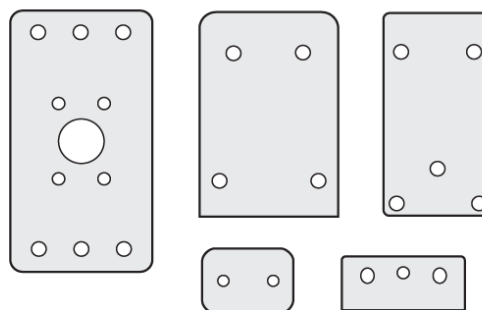


233
Bottom strike.
Flush mounting stainless steel.
Furnished with expansion shields.
Requires mortise in the floor.

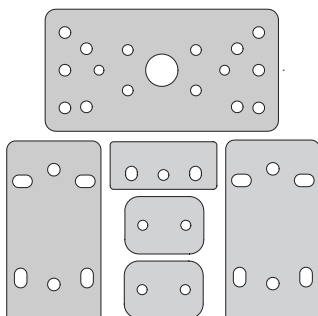
GLASS BEAD SHIM KITS

- 401** – for Rim type, 1/8" thick
- 406** – for SVR type, 1/8" thick
- 412** – for fire rated SVR type, 1/8" thick

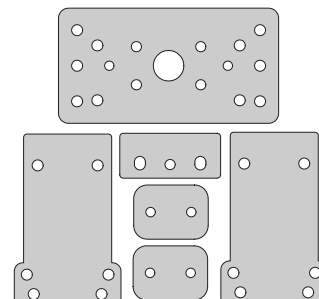
When exit devices are used with shim kits with outside trim, spindle length thumbpiece and thru bolt length must be increased accordingly.



406-3
for 22-3PT type,
1/8" thick



412-3
for F22-3PT type,
1/8" thick



STANDARD HEX DOGGING KIT



(For Non-Rated Panic Bar)
PART # **DOGGINGKIT** (2200 Series)

CYLINDER DOGGING KIT

TO ORDER: Prefix "CD" before PART #.
Available for all 2200 Series devices except
fire exit hardware. Cylinder dogging with
mortise cylinder is located on the mounting
insert lock bolt in retracted position.

To order **KIT ONLY:** use PART # 36CD2200 for 36" and 48CD2200 for 48" devices.
Specify finish.

KEYWAYS: 6-Pin solid brass "C" keyway standard. Optional: Schlage E, Schlage C-K, Russwin D1-2-3-4, Corbin 59/60, Sargent LA-LB-LC, Falcon/Weiser E, Arrow A, Yale 8, Yale GA and Kwikset. Can also accept Medeco, Assa, Kaba and **Cal-Royal HSK** High Security Cylinders.

