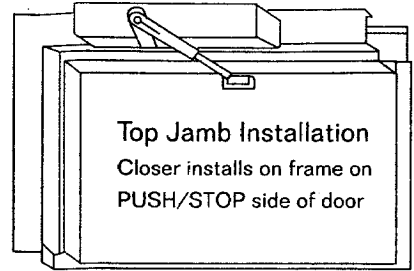
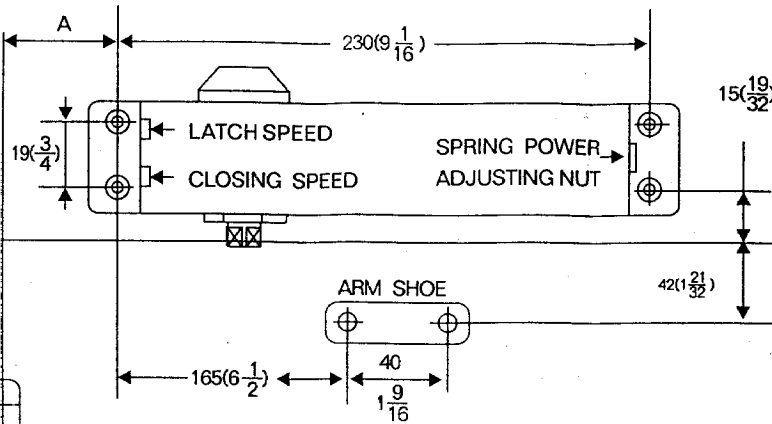




Surface Mounted
Adjustable & Preset "Back-Check"
300 Series
Non Hold-Open
Optional BF/DA

Installation Instructions for TOP JAMB(PUSH SIDE) Mounting



Hinge Edge of Door

OPENING	DIM.A
TO 100°	140mm(5-1/2)
100°-120°	130mm(5-1/8)
OVER 180°	90mm(3-17/32)

- Left hand door shown
- Right hand door opposite
- Dimensions are in inches
- Drawing not to scale
- Closer projection and location may restrict door swing if door must open against wall or other barrier.

INSTALLATION INSTRUCTIONS

1. Select degree of opening from table and use template dimensions shown in above. mark 4 HOLES ON FRAME for close and TWO (2) HOLES ON DOOR for arm shoe.
2. Drill pilot holes in door and frame for #14 all-purpose screws or drill and tap for 1/4-20 machine screws.
3. Install adjustable forearm/arm shoe assembly to door using screws provided.
4. Install main arm to top pinion shaft using screw provided.
5. Mount closer body on frame using screws provided, SPRING POWER ADJUSTING NUT MUST BE POSITIONED AWAY FROM HINGE EDGE.
6. Adjust length of adjustable forearm so that adjustable forearm is perpendicular to door when assembled to preloaded main arm (Illustration below). Secure forearm to main arm with screw provided.
7. Snap pinion cap over shaft on top of closer. (When using full cover, pinion cap is not necessary).
8. Adjust closing speed, back check control and spring power of door, following instructions as shown page 4.

Top View Typical Installation

