

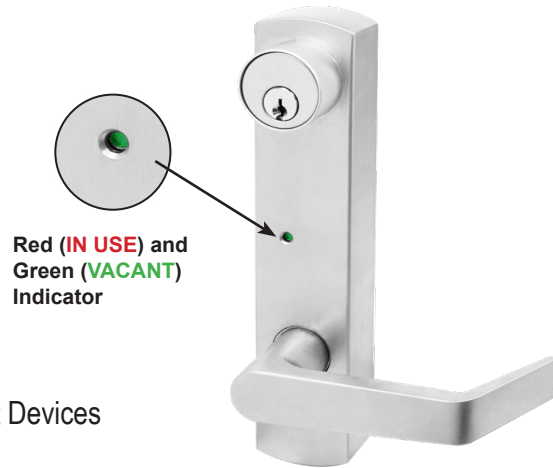
# Trim Selection

## RIGID LEVER ESCUTCHEON



### CONSTRUCTION

- Steel Base Material with Aluminum Alloy Escutcheon Trim
- Red (**IN USE**) and Green (**VACANT**) Indicator Feature
- Rigid, Non-Clutch Mechanism
- Double Heavy Duty Spring Support to prevent sagging and enhance operation
- Grade 1, Thru-Bolted design. Non-Handed design.
- Easily field reversible
- Includes Heavy Duty Steel Spindle.
- Available for Fire and Non-Fire Rated Rim and Vertical Rod Exit Devices
- Standard 6-Pin Schlage "C" Mortise Cylinder included

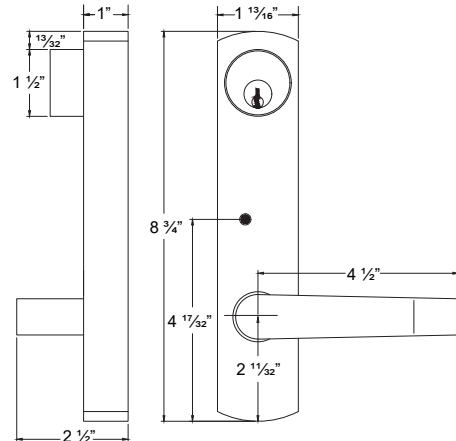


### DOOR THICKNESS

- Standard 1  $\frac{3}{4}$ " to 2  $\frac{3}{8}$ ".
- Cut spindle and screws to fit 1  $\frac{3}{8}$ " door thickness .

### ESCUTCHEON DIMENSIONS

- 1  $\frac{13}{16}$ " width x 8  $\frac{3}{4}$ " length
- Lever length: 5"



ESC45-00  
 ● ICESC45-00  
 ● ICSCESC45-00

#### ENTRANCE

Rigid Entrance, key locks or unlocks escutcheon trim. ANSI Function (08)  
 Operates as classroom function

ESC45-05  
 ● ICESC45-05  
 ● ICSCESC45-05

#### STOREROOM

Rigid Storeroom, key unlocks lever, lever retracts latch bolt, otherwise always locked. ANSI Function (09)

Anti-Microbial Coating available in US26D Only. Use part # "**ANTB-TRIM**" when ordering.

ESC45-30

#### PASSAGE

Trim always operable and free. ANSI Function (14)

ESC45-40

#### DUMMY

Dummy Escutcheon trim. ANSI Function (02)

**KEYWAY:** 6-Pin solid brass "C" keyway Mortise Cylinder standard. Optional: Schlage E, Schlage C-K, Russwin D1-2-3-4, Corbin 59/60, Sargent LA-LB-LC, Falcon/Weiser E, Arrow A, Yale 8, Yale GA and Kwikset. Can also accept Medeco, Assa, Kaba and **Cal-Royal HSK High Security** Cylinders.

●(IC) **INTERCHANGEABLE CORE** locks will accept compatible 6 or 7-Pin cores with **BEST, FALCON and ARROW**.

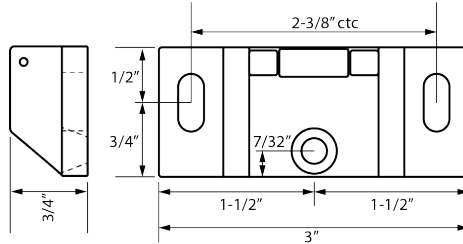
●(ICSC) **INTERCHANGEABLE CORE** available with **Schlage Full Size Format**. Corbin, Sargent and Yale format also available.

# Strike & Accessories

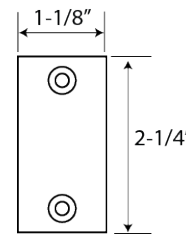
## Strike for use with 45-RIM & F45-RIM Exit Devices

### 610

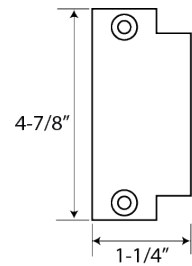
Roller Rim Strike,  
surface applied.  
Standard Packaging.



## Additional Accessories



**LFF**  
Lock front filler



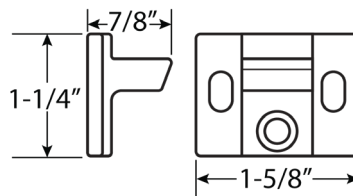
**SF**  
Strike filler

**EXTROD66-12** – 12" Extension Rod  
**EXTROD66-24** – 24" Extension Rod

## Strike for use with 45-SVR & F45-SVR Exit Devices

### 620

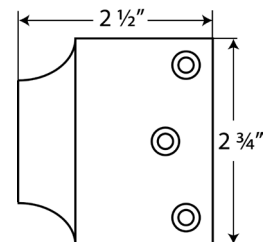
Top Strike.  
Standard packaging.



## Overlapping Strike

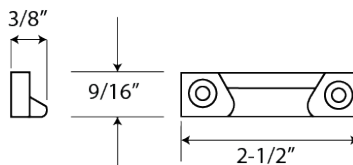
### N251

Surface applied. Used on  
inactive leaf for device on  
active leaf of pair of doors  
without mullion.



### 221

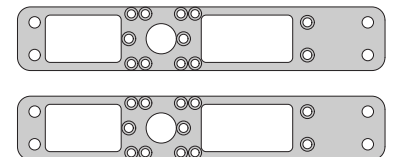
Handicap Bottom Strike.  
Applied to surface of floor  
or to a flat threshold.  
Standard packaging.



## GLASS BEAD SHIM KITS

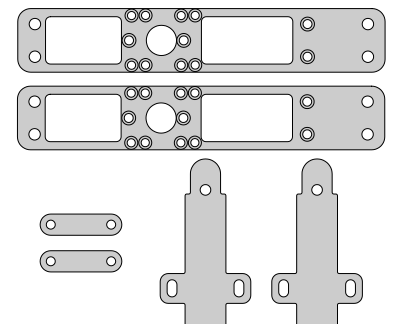
### 201

for 45-RIM  
& F45-RIM,  
1/8" thick



### 212

for 45-SVR  
& F45-SVR,  
1/8" thick



### 233

Bottom strike.  
Flush mounting stainless steel.  
Furnished with expansion shields.  
Requires mortise in the floor.

