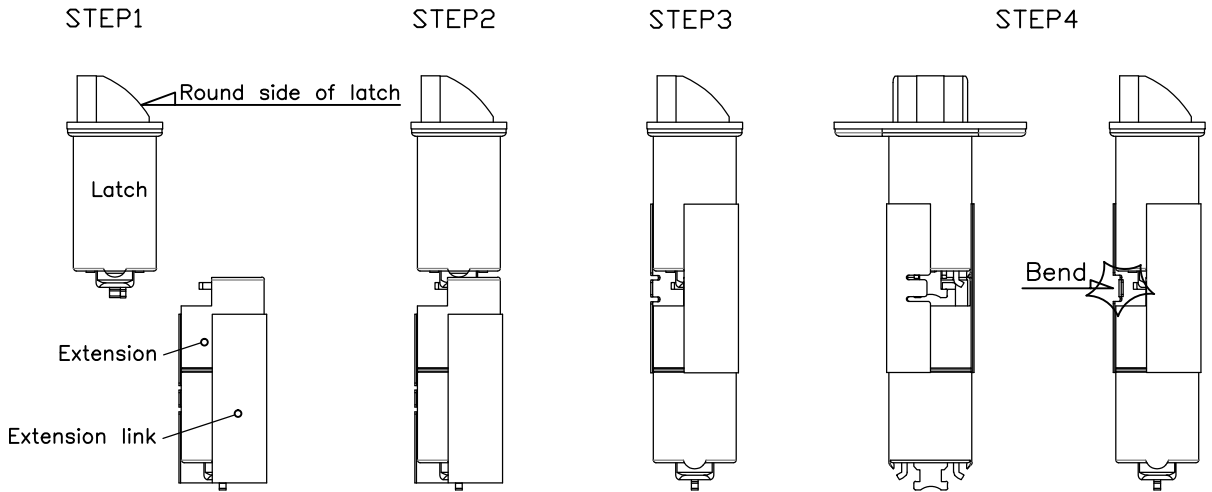


# 5" Extension Latch - Installation Instruction



STEP1 : Parts

STEP2 : Assemble Latch & Extension

STEP3 : Position the fixing ring

STEP4 : Press to bend the fixing ring to keep the link in position

## Caution

1. Face the round side to the latch to the extension link as shown STEP1.  
(Opposite facing of the latch will cause unstable locking with extension link)
2. Make sure to bend the fixing ring not to lose the link.