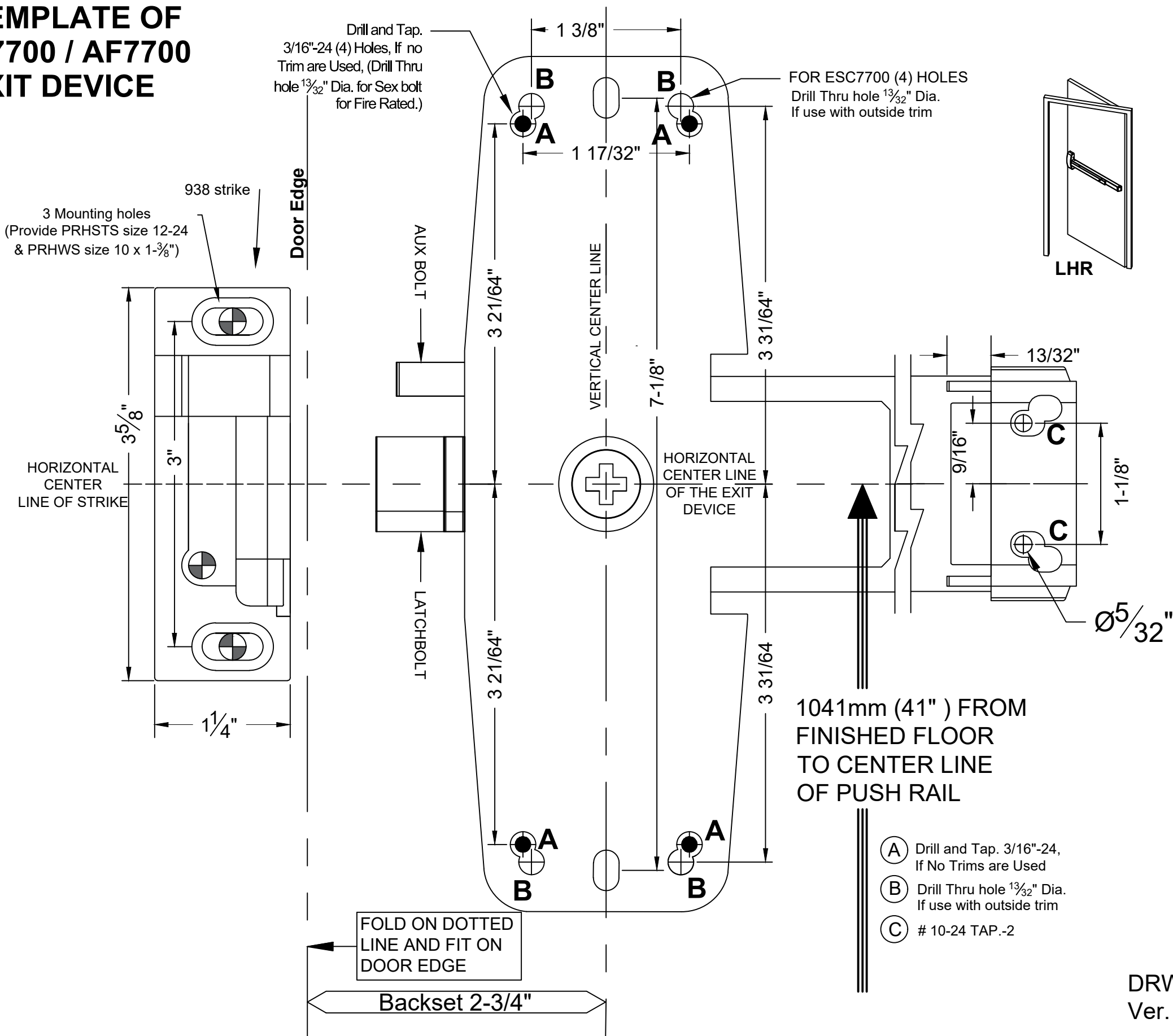
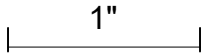




TEMPLATE OF
A7700 / AF7700
EXIT DEVICE



UNIT DIMENSION: INCHES
Scale: 1:1 (If Print Actual)

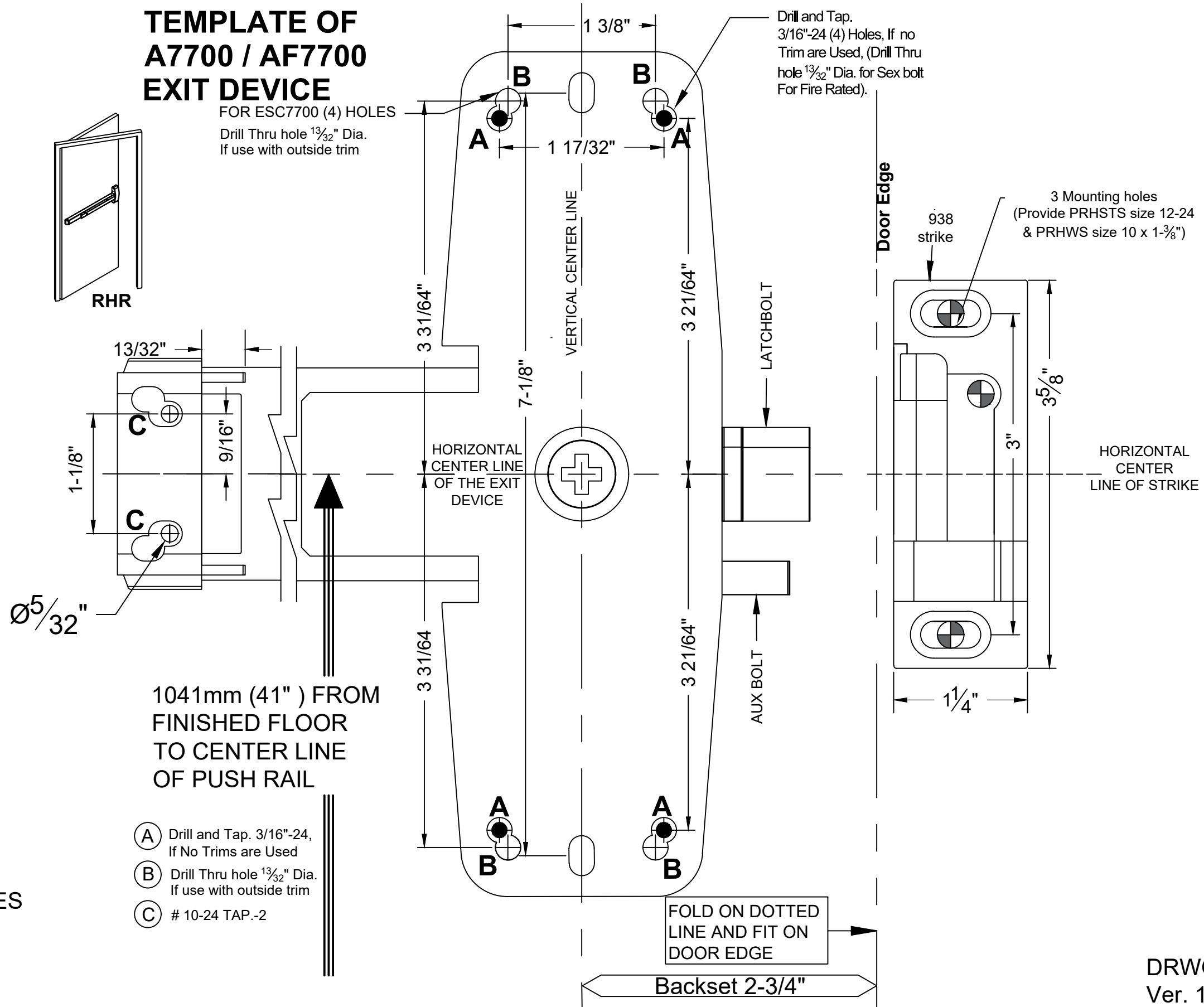


- (A) Drill and Tap. 3/16"-24, If No Trims are Used
- (B) Drill Thru hole $\frac{13}{32}$ " Dia. If use with outside trim
- (C) # 10-24 TAP.-2

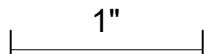


TEMPLATE OF A7700 / AF7700 EXIT DEVICE

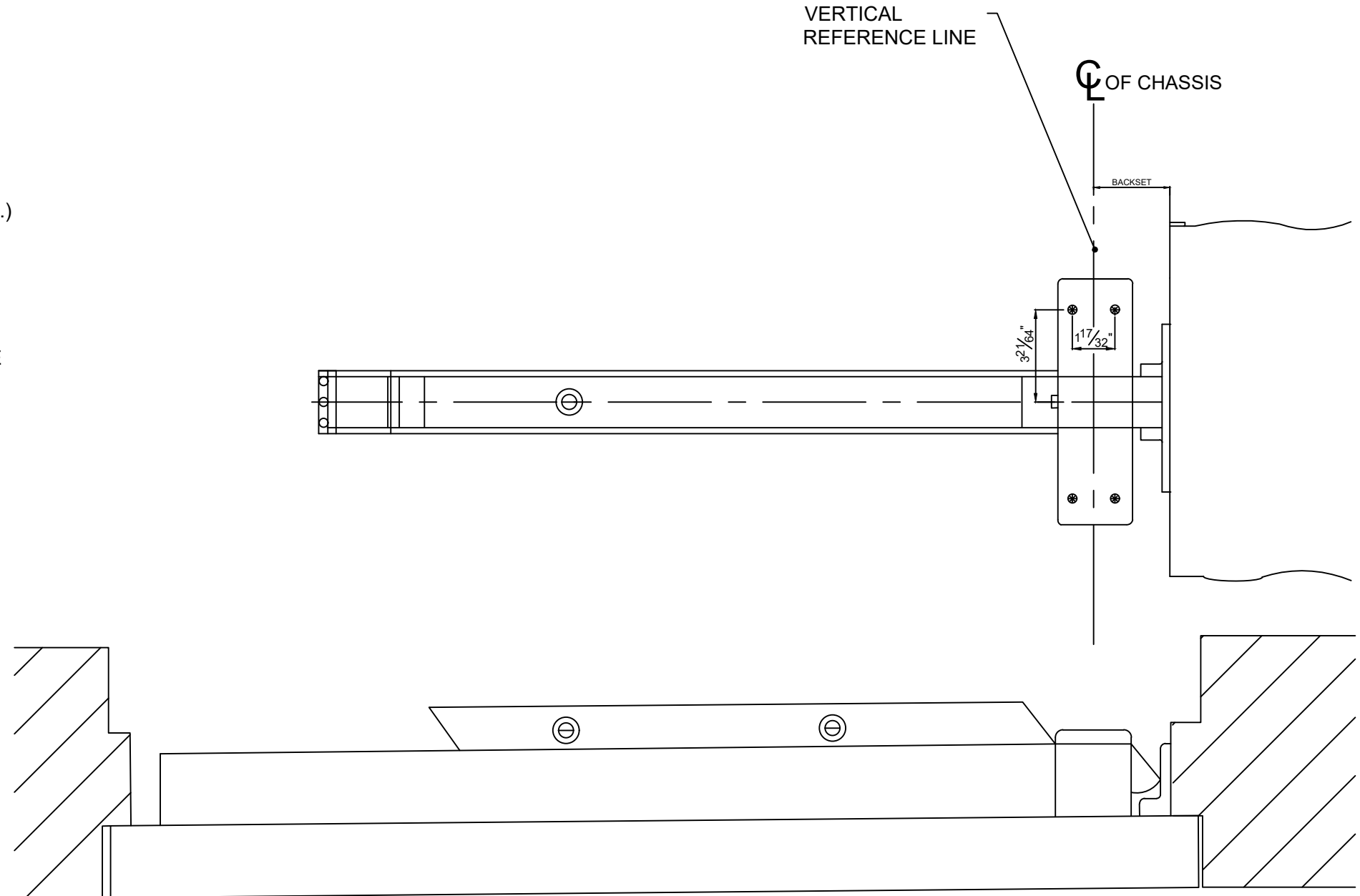
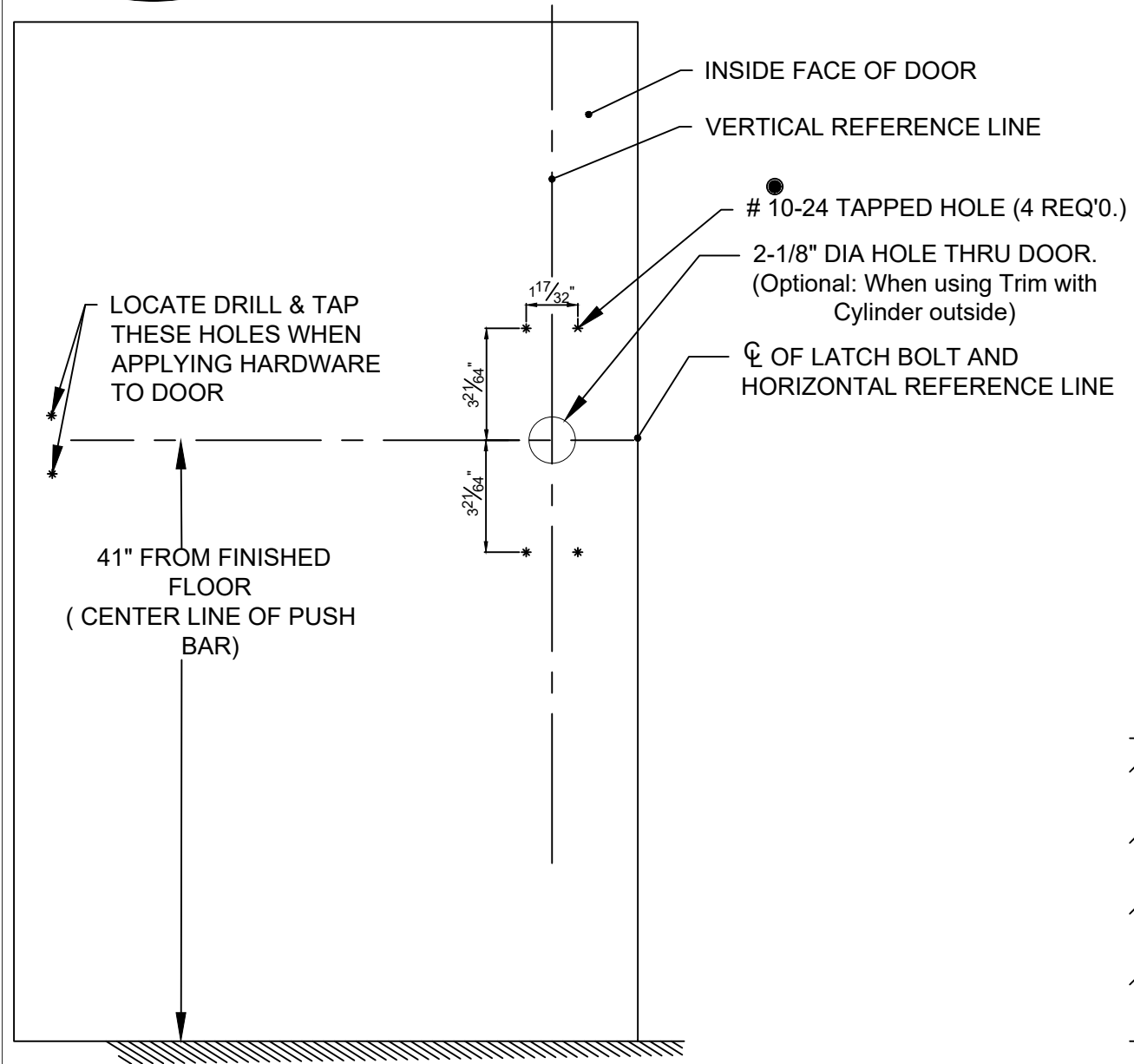
FOR ESC7700 (4) HOLES
Drill Thru hole $\frac{13}{32}$ " Dia.
If use with outside trim



UNIT DIMENSION: INCHES
Scale: 1:1 (If Print Actual)



DRWG.# EDT-4008B-09/24-2of3
Ver. 1.01



- ① SURFACE OF DOOR WHERE EXIT DEVICE IS TO BE APPLIED MUST BE FLUSH
- ② SEE MASTER SHEET FOR AREAS REQUIRING REINFORCEMENTS
- ③ WE RECOMMEND THAT ALL TAPPED HOLES BE DRILLED & TAPPED IN FIELD
- ④ TOLERANCE ON ALL DIMENSION $\pm 1/64$ "

NOTE: Not To Scale

DRWG. # EDT-4008C-9/24-3-3
Ver.1.01