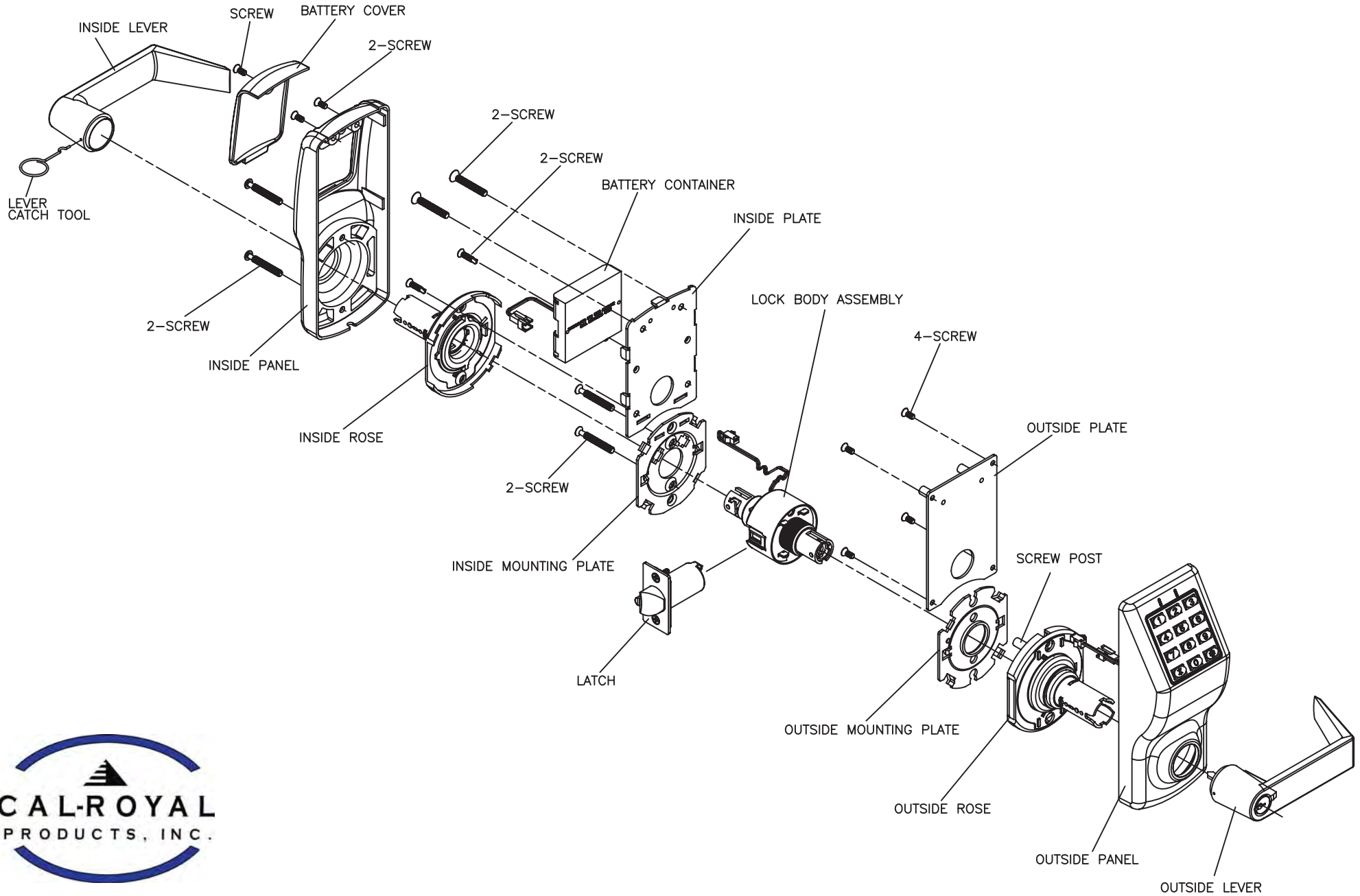


EXPLODED VIEW OF CAL-ROYAL CR3000



INSTALLATION INSTRUCTION FOR CAL-ROYAL CR3000 (LH)

	<h3>1. MARK DOOR</h3> <ol style="list-style-type: none"> 1.1 Attach template, and mark a horizontal height line for the center of latch, on both face of door, edge, and jamb. 1.2 Verify backset, and mark a vertical center line from edge of door 1.3 Apply template to the opposite side of door and repeat above 1.4 Keeping drill level and straight, Drill from both sides to increase accuracy 1.5 Check local ordinance for proper ADA recommended height from finished floor 		<h3>2. MARK LATCHBOLT HOLE</h3> <ol style="list-style-type: none"> 2.1 Drill 1" dia. in the center of door edge, chisel a rebate 1/8" deep, to allow latch face flush fit with door edge. 2.2 Insert latch, fix top fixing screw, and check if latch enters aperture easily and held without too much "play". 2.3 Re-fix the latch face plate, using both screw
	<h3>3. MARK STRIKE HOLE</h3> <ol style="list-style-type: none"> 3.1 Mark center line of latchbolt on frame 3.2 Center strike and mark screws positions 3.3 Drill 1" dia. and chisel out aperture to 3/4" deep 		<h3>4. CUT A REBATE 3/32" TO ALLOW STRIKE FLUSH WITH JAMB</h3> <ol style="list-style-type: none"> 4.1 Tighten strike plate, using both screws
	<h3>5. INSTALL THE FRONT LOCK (KEYPAD SIDE)</h3> <ol style="list-style-type: none"> 5.1 Position the code side of lock onto door Note: lock are supplied right handed. To reverse lock hand, see instructions on how to reverse handing. 5.2 Make sure retractor engages with the tail of latch. 5.3 Put the power cable through hole and motor power cable through lower hole. Note: Make sure cables are not trapped 		<h3>6. APPLY INSIDE MOUNTING PLATE</h3> <ol style="list-style-type: none"> 6.1 Install the inside mounting plate, making sure the two wire holes on the plate are at the 9 and 3 o'clock positions. 6.2 Pull out the motor power cable with black shielding thru the LEFT wire hole for RH opening. 6.3 Fix the two (2) inner through posts in the 6:00 and 12:00 o'clock position. Depending on the thickness on the door use two (2) 1-1/2" screw for 1-3/4" door or two (2) 1" screw for 1-3/8" door (both set of screws are included in the box)
	<h3>7. INSTALL BATTERY CASE AND PLATE</h3> <ol style="list-style-type: none"> 7.1 Position inside battery plate and secure with fixing screws. Note: make sure cables are not trapped or pinched. 		<h3>8. CONNECT WIRES</h3> <ol style="list-style-type: none"> 8.1 Connect the red/black wires to the battery connector (red/black wires) 8.2 Snake the motor wires (black shielding) on the LEFT wire hooks on the bottom of the battery case and mounting plates for RH opening and connect to the motor connector (black shielding). 8.3 Push back the slack of the connected wire inside the 1" hole of the battery plate as much as it can accommodate. 8.4 This procedure is IMPORTANT to avoid pinching of the wires when the interior lock cover is installed
	<h3>9. INSTALL INTERIOR LOCK</h3> <ol style="list-style-type: none"> 9.1 Position inside lock plate over retractor spindle and secure with 4 fixing screws 		<h3>10. INSTALL BATTERIES</h3> <ol style="list-style-type: none"> 10.1 Install the four (4) batteries in the battery compartment. 10.2 Fit battery cover and secure with fixing screw.

- Test operation of lock by depressing internal lever to retract the latch
- Test operation of lock by entering master code and depressing front lever to retract the latch
- If either test fails, check installation of lock again.

INSTALLATION INSTRUCTION FOR CAL-ROYAL CR3000 (RH)

	<p>1. MARK DOOR</p> <ol style="list-style-type: none"> 1.1 Attach template, and mark a horizontal height line for the center of latch, on both face of door, edge, and jamb. 1.2 Verify backset, and mark a vertical center line from edge of door 1.3 Apply template to the opposite side of door and repeat above 1.4 Keeping drill level and straight, Drill from both sides to increase accuracy 1.5 Check local ordinance for proper ADA recommended height from finished floor 		<p>2. MARK LATCHBOLT HOLE</p> <ol style="list-style-type: none"> 2.1 Drill 1" dia. in the center of door edge, chisel a rebate $\frac{1}{8}$" deep, to allow latch face flush fit with door edge. 2.2 Insert latch, fix top fixing screw, and check if latch enters aperture easily and held without too much "play". 2.3 Re-fix the latch face plate, using both screw
	<p>3. MARK STRIKE HOLE</p> <ol style="list-style-type: none"> 3.1 Mark center line of latchbolt on frame 3.2 Center strike and mark screws positions 3.3 Drill 1" dia. and chisel out aperture to $\frac{3}{4}$" deep 		<p>4. CUT A REBATE 3/32" TO ALLOW STRIKE FLUSH WITH JAMB</p> <ol style="list-style-type: none"> 4.1 Tighten strike plate, using both screws
	<p>5. INSTALL THE FRONT LOCK (KEYPAD SIDE)</p> <ol style="list-style-type: none"> 5.1 Position the code side of lock onto door Note: lock are supplied right handed. To reverse lock hand, see instructions on how to reverse handing. 5.2 Make sure retractor engages with the tail of latch. 5.3 Put the power cable through hole and motor power cable through lower hole. Note: Make sure cables are not trapped 		<p>6. APPLY INSIDE MOUNTING PLATE</p> <ol style="list-style-type: none"> 6.1 Install the inside mounting plate. making sure the two wire holes on the plate are at the 9 and 3 o'clock positions. 6.2 Pull out the motor power cable with black shielding thru the LEFT wire hole for RH opening. 6.3 Fix the two (2) inner through posts in the 6:00 and 12:00 o'clock position. Depending on the thickness on the door use two (2) 1-1/2" screw for 1-3/4" door or two (2) 1" screw for 1-3/8" door (both set of screws are included in the box)
	<p>7. INSTALL BATTERY CASE AND PLATE</p> <ol style="list-style-type: none"> 7.1 Position inside battery plate and secure with fixing screws. Note: make sure cables are not trapped or pinched. 		<p>8. CONNECT WIRES</p> <ol style="list-style-type: none"> 8.1 Connect the red/black wires to the battery connector (red/black wires) 8.2 Snake the motor wires (black shielding) on the LEFT wire hooks on the bottom of the battery case and mounting plates for RH opening and connect to the motor connector (black shielding). 8.3 Push back the slack of the connected wire inside the 1" hole of the battery plate as much as it can accommodate. 8.4 This procedure is IMPORTANT to avoid pinching of the wires when the interior lock cover is installed
	<p>9. INSTALL INTERIOR LOCK</p> <ol style="list-style-type: none"> 9.1 Position inside lock plate over retractor spindle and secure with 4 fixing screws 		<p>10. INSTALL BATTERIES</p> <ol style="list-style-type: none"> 10.1 Install the four (4) batteries in the battery compartment. 10.2 Fit battery cover and secure with fixing screw.

- Test operation of lock by depressing internal lever to retract the latch
- Test operation of lock by entering master code and depressing front lever to retract the latch
- If either test fails, check installation of lock again.

