



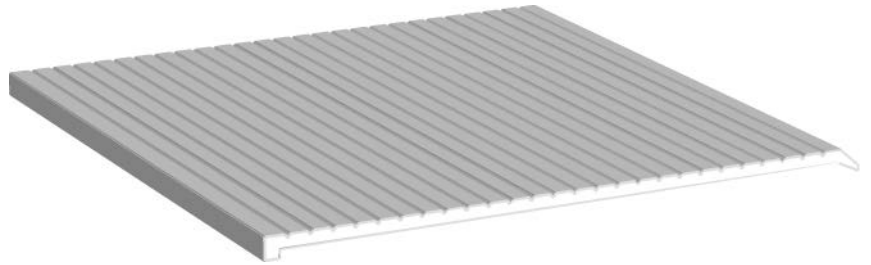
ITEM # CR4241

FINISH: MILL FINISH ALUMINUM AND DURO

3-1/2" (88.9mm) SILL NOSING



**3-1/2" W
88.9 mm**



INSTALLATION INSTRUCTIONS

1. Measure width at the bottom of the frame and cut the nosing to exact full width of the opening.
2. If necessary trim and notch the nosing ends to accommodate the side jamb stops.
3. Mark and drill pilot holes through the pre-drilled holes in the nosing and fasten with screws provided.
4. Seal both ends of the nosing and along the sides. If used with pre-installed threshold, unscrew threshold and slip top leg of nosing under outside leg of threshold.
5. Operate the door multiple times to ensure proper adjustment so as not to prevent the door from self-closing and latching.



Meets UL10B, UL10C and
UBC 7-2 (1997) Category J



**3 HR POSITIVE
PRESSURE**

MATERIAL FOR USE IN LISTED STEEL FRAMES AND CLASSIFIED HOLLOW METAL STEEL COMPOSITE TYPE FIRE DOORS ARE RATED UP TO AND INCLUDING 3 HOURS, WOOD COMPOSITE TYPE FIRE DOORS ARE RATED UP TO AND INCLUDING 1-1/2 HOURS, AND WOOD CORE FIRE DOORS ARE RATED 20 MINUTES WITHOUT HOSE STREAM.