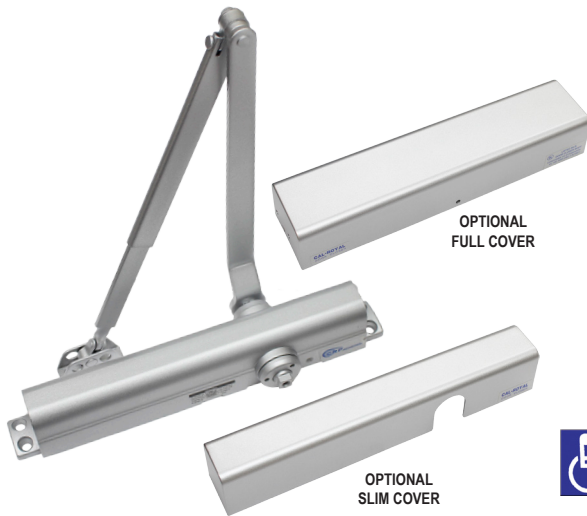


# CR801 / CR801S SERIES

ANSI 156.4 Grade 1, Slim / Full Cover Multi-Size, Full Feature Closer

UL Listed, Conforms to Standards UL10C and UBC7-2-1997

BHMA Certified Lifetime Warranty



- Cal-Royal's Finest Hydraulic Door Closer Series Meeting the Highest Industry Standards, Grade 1
- Heavy-Duty Double Lever Arm With Extra Smooth Action Full Feature Multi-Size Commercial Door Closer For Use In Office Buildings, Shopping Centers And Other Commercial Buildings
- Standard Back-Check Function
- Optional Slim / Full Plastic Cover
- Optional Adjustable Delayed Action / Barrier Free For Handicapped Or Elderly

## FEATURES

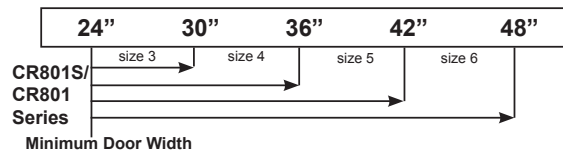
- Hydraulic Door Closer with Standard Adjustable Back-Check Function
- ANSI 156.4 Grade 1: UL Listed for Fire Door Assemblies
- Universal Application. Non-Handed for Standard, Top Jamb or Parallel Arm Installation
- Non-Sized, 1 thru 6 FACTORY PRESET SIZE 3
- Door Weights: 30-260 lbs (All Models)
- Standard Adjustable Back-Check Function
- Adjustable Closing and Latching Speed by Two Separate Regulating Valves
- Standard Full Plastic Cover (**CR801**)
- Standard Slim Plastic Cover (**CR801S**)
- Available in Alum, Duro, Gold
- Optional Adjustable Delayed Action (**DA**). Preset at the Factory for Approximately 20 Seconds, Between 70° and 0°. Delay Time Easily Adjusted Up to 1 Minute
- Barrier Free (**BF**) Meets ADA regulation. Size 1 thru 6 Engineered with Reduced Spring Power to Provide Easier Opening for Handicapped or Elderly

## TABLE OF SIZES

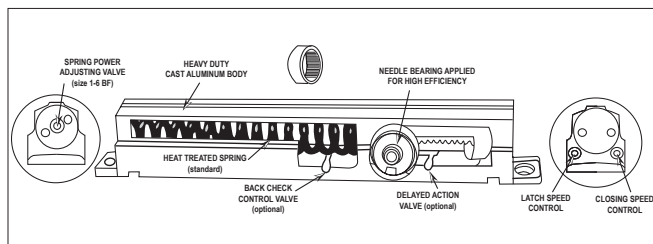
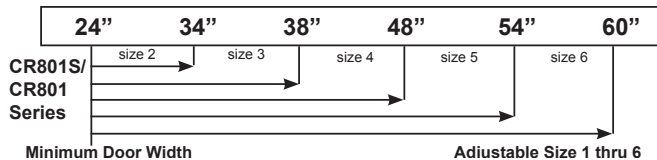
Closing power of closers may be adjusted 50%

→ Shows recommended range of door width for closer size.

### EXTERIOR (and VESTIBULE) DOOR WIDTH



### INTERIOR DOOR WIDTH

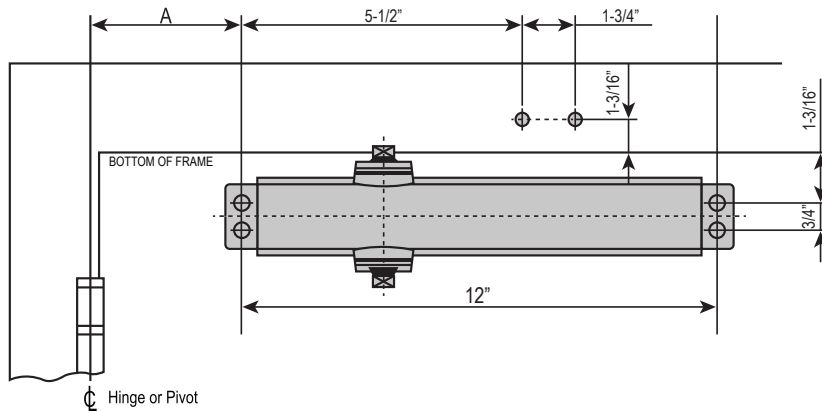


### Replacement Hole Pattern Same As Norton 8301 / 8501 and Yale 3301 / 3501

DESCRIPTION	SIZE	
A. Length of Closer Body	12 3/4"	
B. Horizontal Mounting Holes	12"	
C. Vertical Mounting Holes	3/4"	
D. Height of Closer Body	1 1/4"	
E. Projection from Door	2 1/8"	

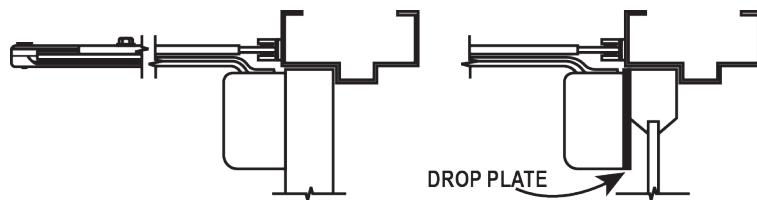
# MOUNTING INFORMATION

## CR801 / 801S SERIES : REGULAR ARM INSTALLATION (PULL SIDE)

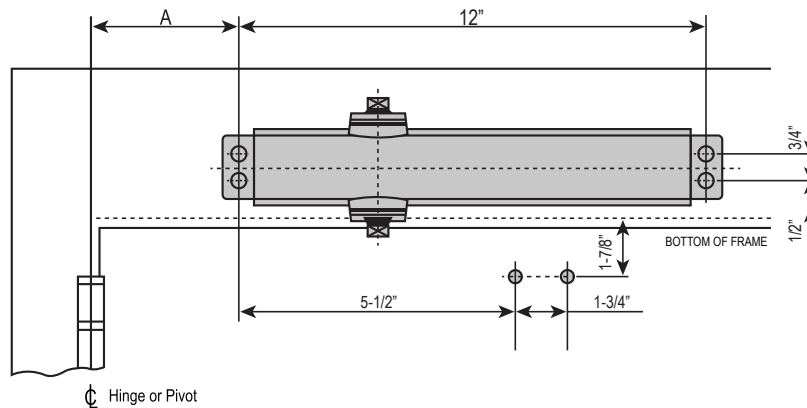


- RIGHT HAND DOOR SHOWN
- LEFT HAND DOOR OPPOSITE
- DIMENSIONS ARE IN INCHES
- DRAWING NOT TO SCALE

OPENING	DIM A
TO 100°	7-1/2" (190.5mm)
TO 130°	6" (152.4mm)
TO 180°	4-1/2" (114.3mm)

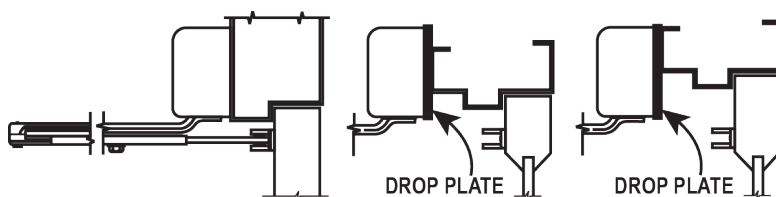


## CR801 / 801S SERIES : TOP JAMB INSTALLATION (PUSH SIDE)



- RIGHT HAND DOOR SHOWN
- LEFT HAND DOOR OPPOSITE
- DIMENSIONS ARE IN INCHES
- DRAWING NOT TO SCALE

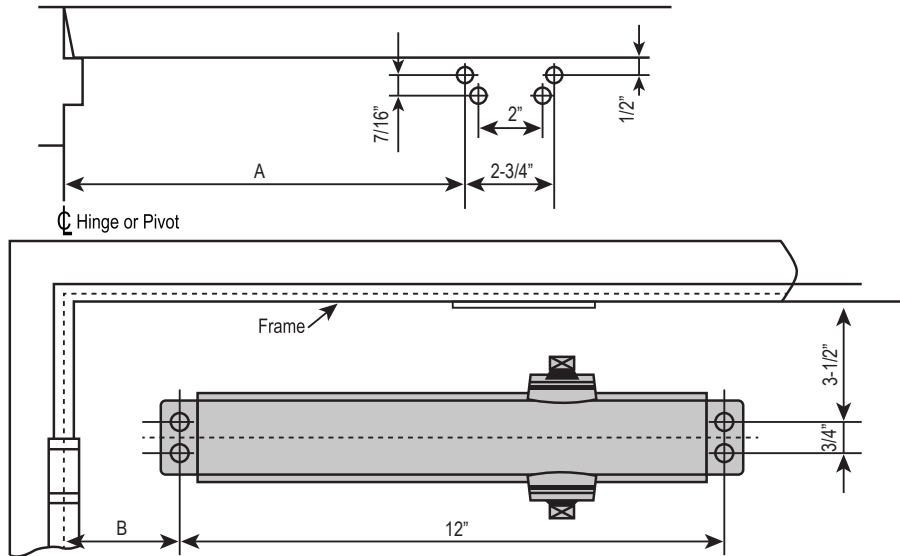
OPENING	DIM A
TO 100°	7-1/2" (190.5mm)
TO 130°	6" (152.4mm)
TO 180°	4-1/2" (114.3mm)



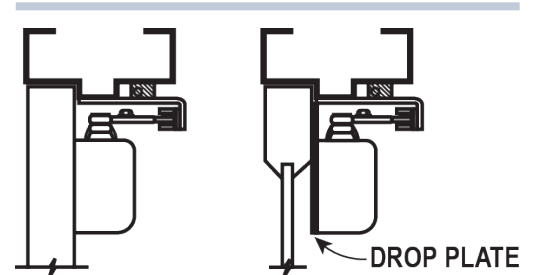
# MOUNTING INFORMATION

## CR801 / 801S SERIES : PARALLEL ARM INSTALLATION (PUSH SIDE)

OPENING	DIM A	DIM B
TO 120°	9-1/2" (241.3mm)	3-3/4" (95.25mm)
TO 180°	7" (177.8mm)	1-1/4" (31.75mm)

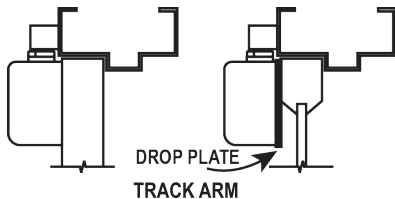


- LEFT HAND DOOR SHOWN
- RIGHT HAND DOOR OPPOSITE
- DIMENSIONS ARE IN INCHES
- DRAWING NOT TO SCALE

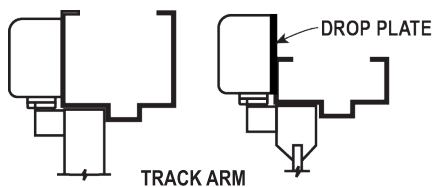


## CR801 / 801S SERIES : OPTIONAL INSTALLATION

### REGULAR ARM (PULL SIDE)



### TOP JAMB (PUSH SIDE)



**MAXIMUM OPENING:** 180° (Standard), 120° (Hold Open)

### OPTIONAL INSTALLATION

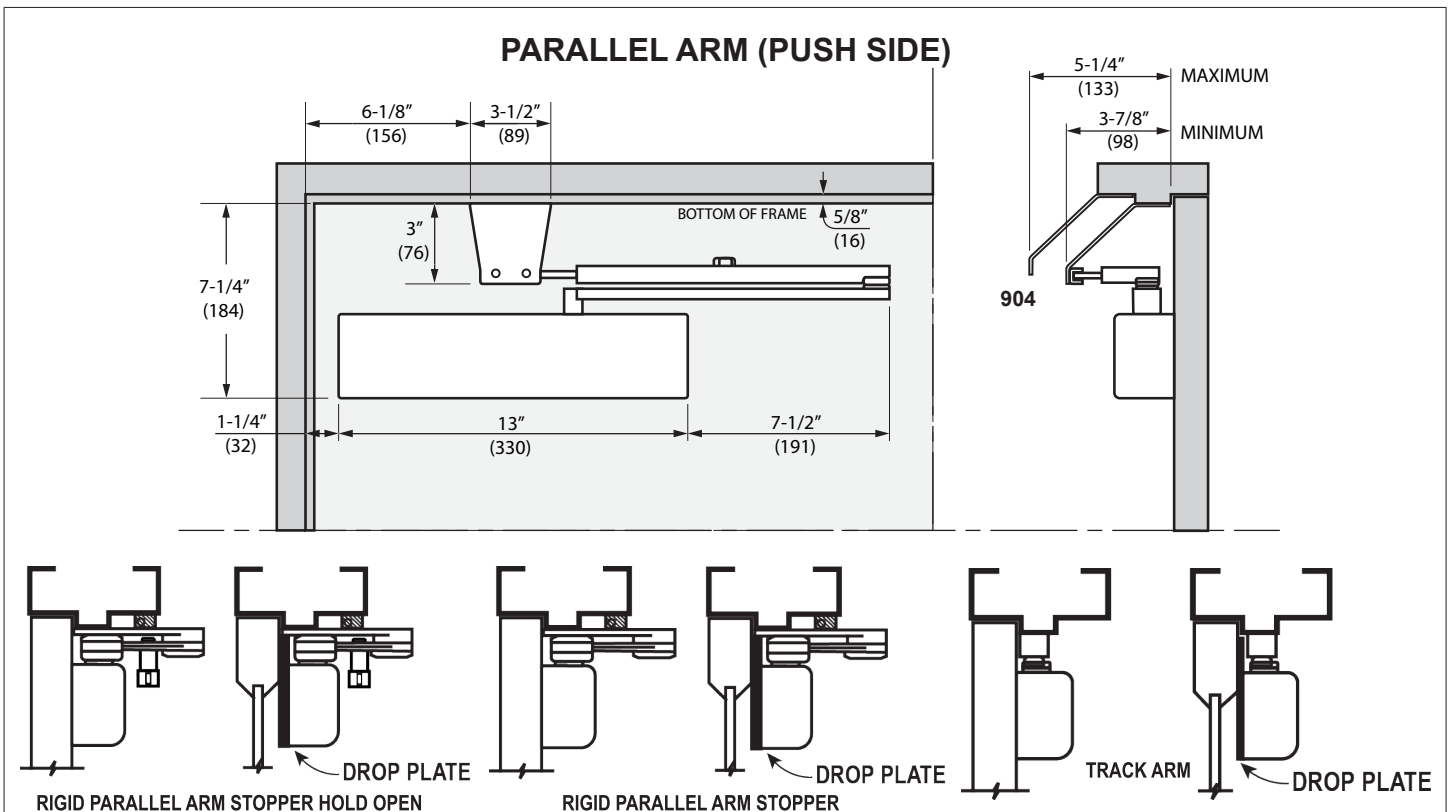
#### ARMS

- 901 / 902 - Hold-Open Arm with Parallel Bracket, Non-Handed with Stop in Soffit Shoe
- 900EXT - Extended Long Arm ( 3" Extension ) for Top Jamb with Deep Reveals
- 945AR - Door Closer Arm (Main and Regular Forearm)
- TRACK / 900 - Slide Track Arm with Removable Hold-Open

#### BRACKETS

- 850S - Slim Flat Drop Plate
- 850W - Wide Flat Drop Plate
- 850F - Full Flat Drop Plate

## CR801 / 801S SERIES : OPTIONAL INSTALLATION



**MAXIMUM OPENING:** 180° (Standard), 120° (Hold Open)

### OPTIONAL INSTALLATION

#### ARMS

- **900HOSPRING** - Super Rigid Parallel Arm Stopper Hold-Open, Non-Handed with Spring Loaded Stop in Soffit Shoe
- **900SPRING** - Super Rigid Non-Handed Parallel Arm with Spring Loaded Stop in the Soffit Shoe
- **HOSRPS900** - Super Rigid Parallel Arm Stopper Hold-Open, Non-Handed with Stop in Soffit Shoe
- **SPAS900** - Super Rigid Parallel Arm Stopper, Non-Handed with Stop in Soffit Shoe
- **901 / 902** - Hold-Open Arm with Parallel Bracket, Non-Handed with Stop in Soffit Shoe
- **900EXT** - Extended Long Arm (3" Extension) for Top Jamb with Deep Reveals
- **945AR** - Door Closer Arm (Main and Regular Forearm)
- **TRACK / 900** - Slide Track Arm with Removable Hold-Open

#### BRACKETS

- **904** - Parallel Arm Drop Bracket for Non-Hold Open Parallel Arm Applications to Clear a Surface-Applied Stop / Holder
- **905** - Parallel Arm Bracket
- **850S** - Slim Flat Drop Plate
- **850W** - Wide Flat Drop Plate
- **850F** - Full Flat Drop Plate