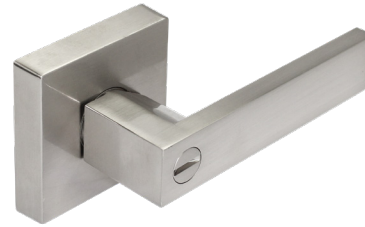
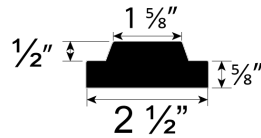


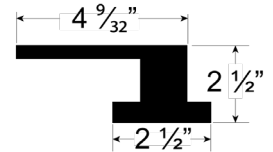
CONTEMPORARY SERIES LEVERSETS & DEADBOLTS



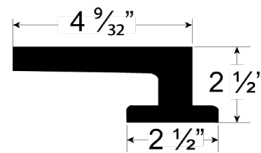
**ESQUIRE DESIGN
"ESQ" SERIES**



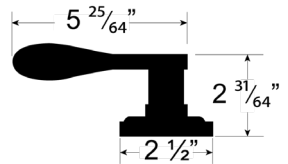
**HOLLAND DESIGN
"HOL" SERIES**



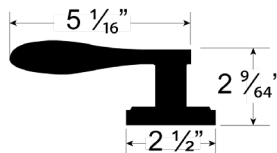
**ATLAS DESIGN
"ATL" SERIES**



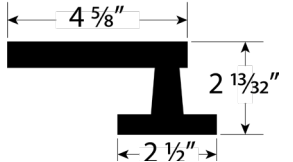
**JUPITER DESIGN
"JUP" SERIES**



**PHOENIX DESIGN
"PHO" SERIES**



**VANITY DESIGN
"VAN" SERIES**



FEATURES & SPECIFICATIONS

- ◆ Grade 3, ANSI Standard A156.2 Leversets and A156.5 Deadbolt
- ◆ Trim and Levers are Zinc Plated
- ◆ Tubular Body, Exposed Screws,
- ◆ Easy Installation
- ◆ Kwikset 5-Pin Keyway. Re-keyable for Master and Construction Keying
- ◆ For Wood and Metal Doors, Fits 1 3/8" to 1 3/4" Thick Doors
- ◆ 2 3/8" or 2 3/4" Adjustable Backset, Size 1" x 2 1/4" Round Corner Standard
- ◆ Square Corner Option and Drive-In Latch bolt also Available on Special Factory Order
- ◆ Round Corner Full Lip Strike: 1 3/4" x 2 1/4", Optional T-Strike
- ◆ Keyed Entry Comes with Lever / Lever for Exterior and Interior
- ◆ **Atlas, Phoenix and Vanity Designs have Auto Release for Immediate Egress on Privacy Functions**
- ◆ 1" Bore Diameter for Latch, 2 1/8" Diameter for Lock Housing

FINISHES

- ◆ US3 - Bright Brass
- ◆ US5 - Antique Brass
- ◆ US15 - Satin Nickel
- ◆ US15A - Antique Nickel
- ◆ US10B - Oil Rubbed Bronze
- ◆ US26D - Satin Chrome
- ◆ US26 - Polished Chrome
- ◆ PVD - Physical Vapor Deposition Coating
- ◆ **Refer to price list for stock finishes**

FUNCTIONS

- 00 - Entrance (Push Button)
- 20 - Privacy (Bed & Bath)
- 30 - Passage (Hall & Closet)
- 40 - Dummy

5 Year Finish Warranty
25 Year Mechanical Warranty