

GENESYS SERIES

Electrified Cylindrical Lock

Available on Storeroom Only

FEATURES:

- UL Listed
- Continuous duty dual solenoids for cooler operation during “continuously ON” applications
- Low current draw
- 3 year “No Hassle” warranty

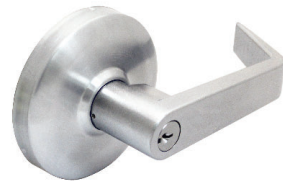
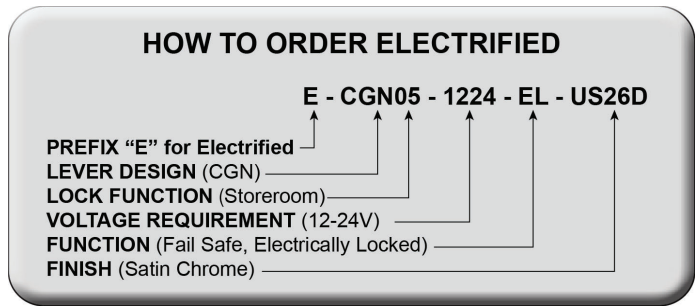
OPTIONS:

- Voltage requirement - **dual voltage 12-24V (DC)**
- Amperage – 0.38A @ 12V or 0.19A @ 24V
- Power consumption - 4.6 watts
- Function – available Fail Safe, “Electrically Locked” (EL) or Fail Secure, “Electrically Unlocked” (EU)
- **RX Switch option**, use part # **RXCGN**.

NEW ALL-IN-ONE FEATURE
(Universal Dual Voltage 12 to 24 VDC,
Field Convertible EL to EU & Vice Versa)



Available on all Genesys Series lever designs



****GN DESIGN**



****AT DESIGN**



****SPA DESIGN**

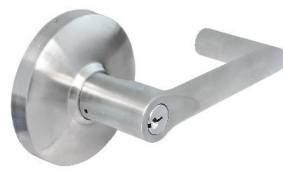


TUB DESIGN

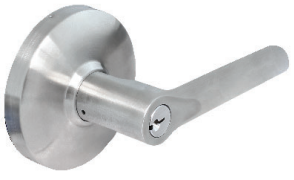
TO ORDER:

- Prefix “E” before part #.
- Must specify the following when ordering:
 - lever design: CGN, CAT, CSPA, CTUB, CAUG, CDAN, CLON, or CTAC
 - lock function: “05” (Storeroom ONLY)
 - voltage: “1224” (dual voltage 12-24V)
 - function: “EL” (fail safe) or “EU” (fail secure)
 - finish: see pricelist for stock finishes

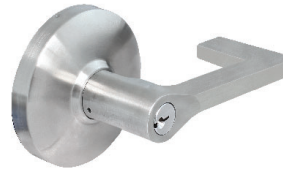
Example: CGN05 US26D, 12-24V fail safe,
Order: “**ECGN051224EL US26D**”



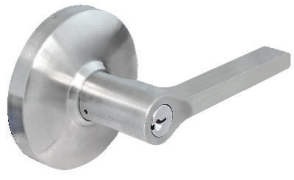
AUG DESIGN



DAN DESIGN



TAC DESIGN



LON DESIGN

- (IC) Indicates function available with **Best, Falcon, and Arrow** Interchangeable Core.
- (ICSC) Indicates function available with **Schlage Full Size** Interchangeable Core.
- (SARIC) Indicates function available with **Sargent Full Size** Interchangeable Core.
- (RUSIC) Indicates function available with **Corbin / Russwin Full Size** Interchangeable Core.
- (YALIC) Indicates function available with **Yale Full Size** Interchangeable Core.

****Note: YALE LFIC only available in GN, AT, SPA lever designs**