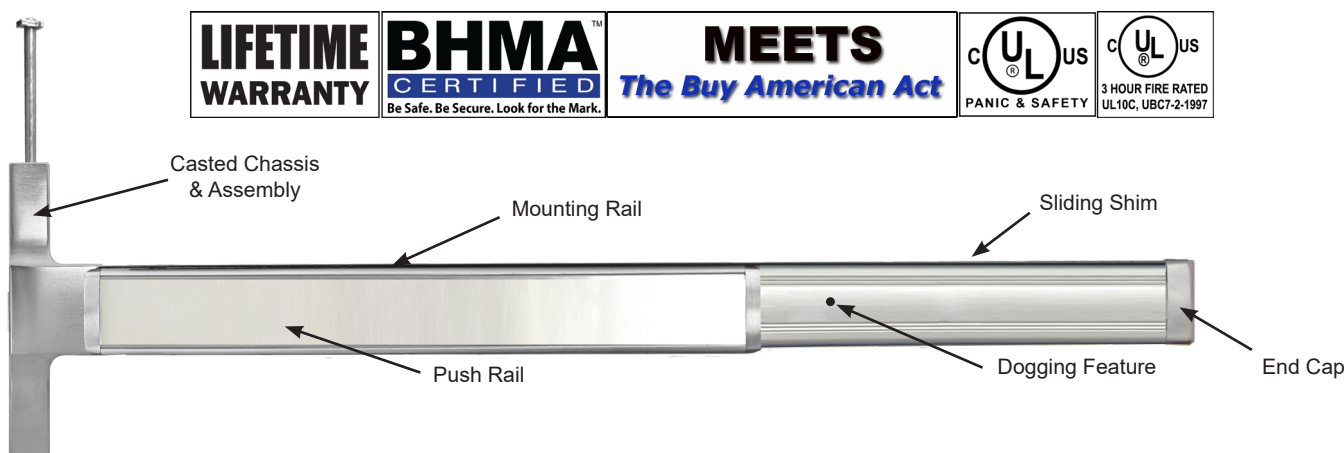


GLSCVR7700 & FGLSCVR7700 Series



GRADE 1 Concealed Vertical Type, Narrow Stile Exit Device
Optional Less Bottom Rod (LBR)



LIFETIME WARRANTY

BHMA CERTIFIED
 Be Safe. Be Secure. Look for the Mark.

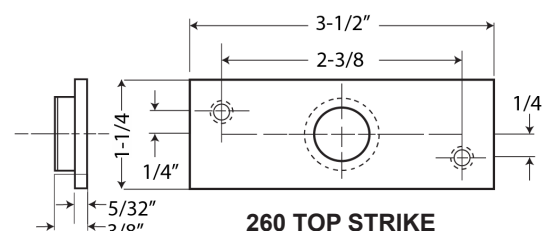
MEETS
The Buy American Act

UL US
 PANIC & SAFETY

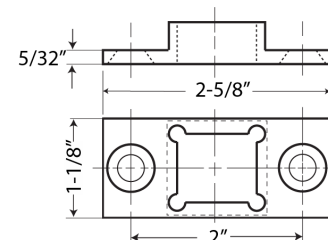
UL US
 3 HOUR FIRE RATED
 UL10C, UBC7-2-1997

Specifications

For Doors.....	Metal or Aluminum Glass doors with 1 3/4" minimum stile width, 1 3/4" thickness for single or double door application
Top Chassis.....	Non-ferrous Alloy (Panic Grade)
Cover.....	Non-ferrous plated material
Mounting.....	Furnished with wood and machine screws
End Cap.....	Brass, Bronze or Stainless Steel construction
Hand.....	Handed. Specify RHR or LHR
Top and Bottom Bolts.....	Stainless Steel. Top and bottom bolt travel 7/16" (11 mm) Stainless Steel. Adjustable to 1" (25 mm)
Spring.....	Stainless Steel throughout
ANSI Standard.....	A156.3, Grade 1
Rail Assembly.....	Heavy gauge extruded aluminum body with Stainless Steel push pad
Strike.....	260 Top and 265 Bottom strikes packed standard (See strike page)
Dogging Feature.....	Available for 36" bar only. Allen-type key furnished standard.
Mullion.....	Available
UL and ULC Listed.....	GLSCVR7700 Series for Panic & Safety for all types of 4' x 8' single doors and 8' x 8' double doors for Panic & Safety. FGLSCVR7700 Series for all types of 4' x 8' single doors for up to 3 hour fire labelled installations. Conforms to standards UL10C and UBC 7-2-1997 codes.
Finish.....	Architectural plated finishes
Electronic Functions.....	(ELR) Electrical Latch Retraction and RX & LX Signal Switch available
Anti-Microbial Coating.....	Available on US32D only. Use part # ANTB-EXIT



260 TOP STRIKE



265 BOTTOM STRIKE

DIMENSIONS

Push Rail height to finished floor	41" (1041 mm) at center		
Push Rail projection			
Neutral	3 5⁄8" (92 mm)		
Depressed	2 7⁄8" (73 mm)		
Center case	8 1⁄16" x 1 1⁄8" x 2 3⁄8" (205 mm x 29 mm x 60 mm)		
MODEL	ACTUAL LENGTH	MAX CUT DOWN	DOOR SIZE
GLSCVR773684, FGLSCVR773684	34 9⁄64"	10"	26" to 36" width
GLSCVR774884	45 29⁄32"	12"	36" to 48" width