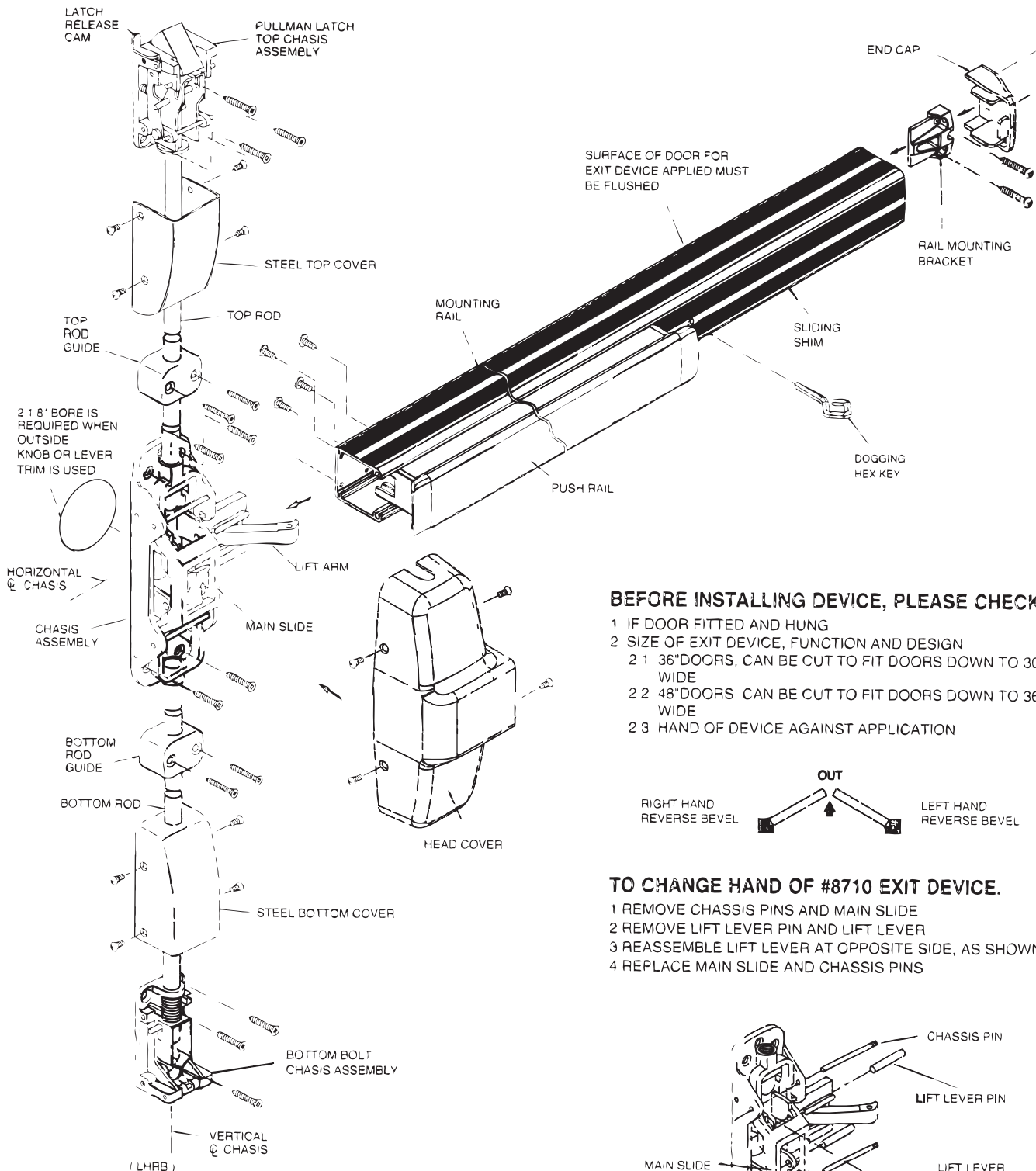
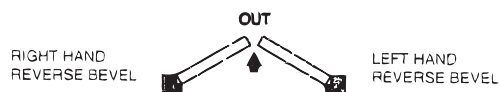


# INSTALLATION INSTRUCTION FOR 9900V SERIES PANIC VERTICAL ROD EXIT DEVICE.



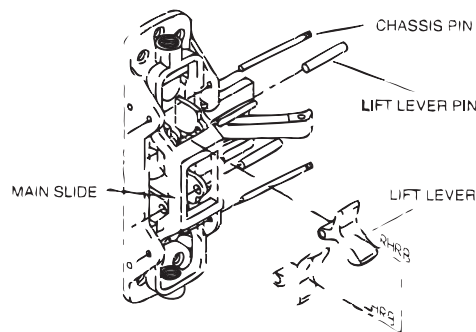
## BEFORE INSTALLING DEVICE, PLEASE CHECK

- 1 IF DOOR FITTED AND HUNG
- 2 SIZE OF EXIT DEVICE, FUNCTION AND DESIGN
  - 2.1 36" DOORS. CAN BE CUT TO FIT DOORS DOWN TO 36" WIDE
  - 2.2 48" DOORS CAN BE CUT TO FIT DOORS DOWN TO 36" WIDE
  - 2.3 HAND OF DEVICE AGAINST APPLICATION



## TO CHANGE HAND OF #8710 EXIT DEVICE.

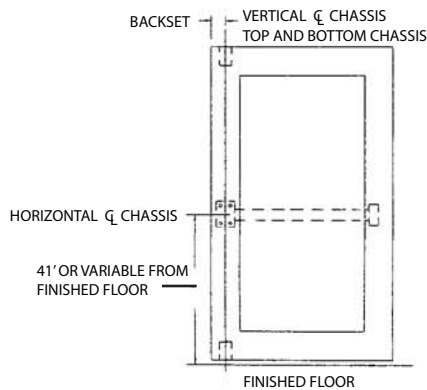
- 1 REMOVE CHASSIS PINS AND MAIN SLIDE
- 2 REMOVE LIFT LEVER PIN AND LIFT LEVER
- 3 REASSEMBLE LIFT LEVER AT OPPOSITE SIDE, AS SHOWN
- 4 REPLACE MAIN SLIDE AND CHASSIS PINS



## 1. MARK VERTICAL AND HORIZONTAL REFERENCE LINE ON DOOR.

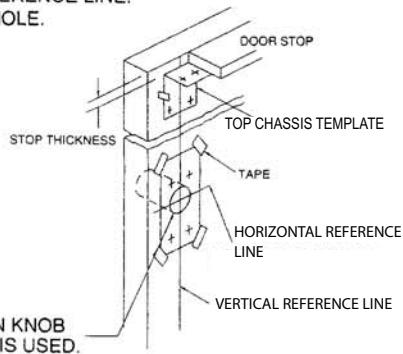
DETERMINE BACKSET TO LOCATE VERTICAL REFERENCE LINE.

1. IF LOCK STILE IS 4-1/2" WIDE OR WIDER, BACKSET IS 2-3/4"
2. IF LOCK STILE IS LESS THAN 4-1/2" WIDE, BACKSET IS HALF OF THE EXPOSED WIDTH OF LOCK STILE.

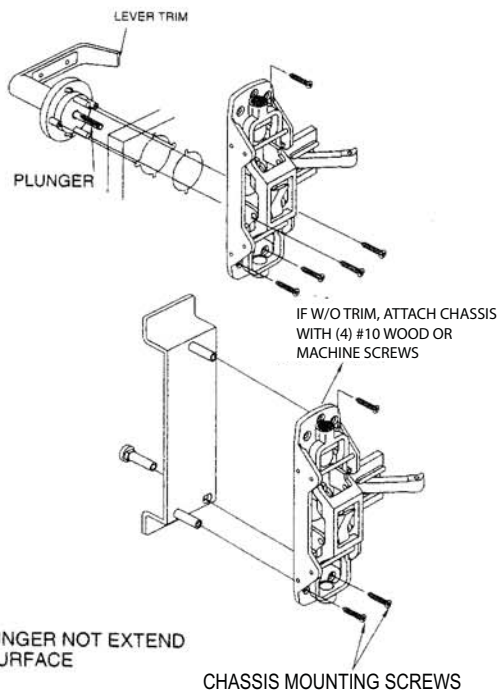


## 2. PREPARE DOOR

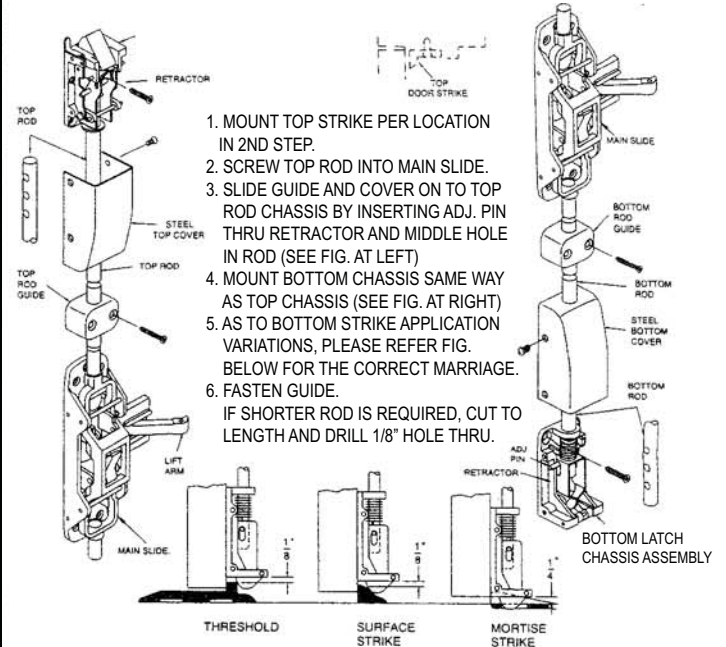
TAPE TEMPLATE ON INSIDE OF DOOR ALONG REFERENCE LINE. SPOT AND DRILL HOLE.



## 3. APPLY HARDWARE

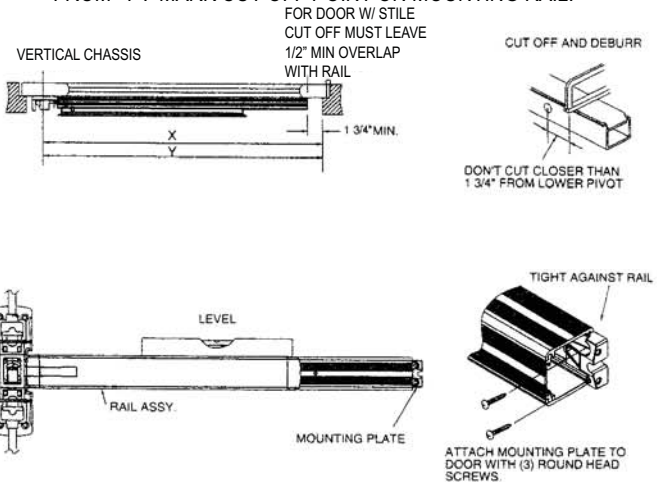


## 4. ATTACH TOP AND BOTTOM CHASSIS



## 5. APPLY RAIL ASSEMBLY

1. CHECK THE SIZE OF DEVICE, IF CUTTING TO LENGTH IS REQUIRED.
2. DETERMINE CUT OFF LENGTH "X" BY SUBTRACTING 1-3/4" FROM "Y". MARK CUT OFF POINT ON MOUNTING RAIL.



## 6. APPLY COVER

CHECK FINAL OPERATION OF DEVICE AND ADJUST, THEN FASTEN COVERS.

