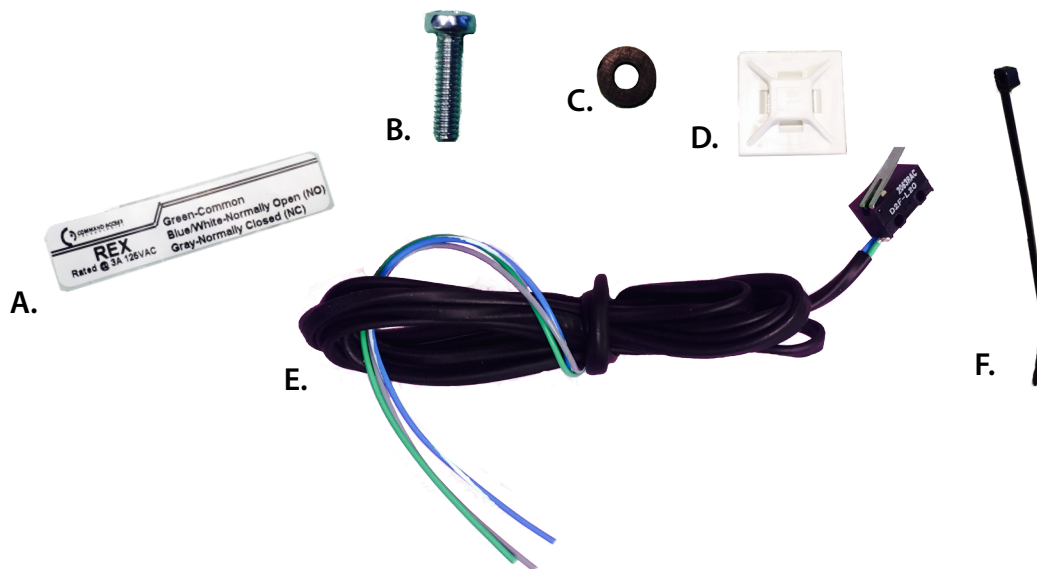


RX9800-M

INSTALLATION INSTRUCTIONS

The RX9800-M is a field installable Request-to-Exit switch for FRL2298. The switch is SPDT (single pull, double throw).



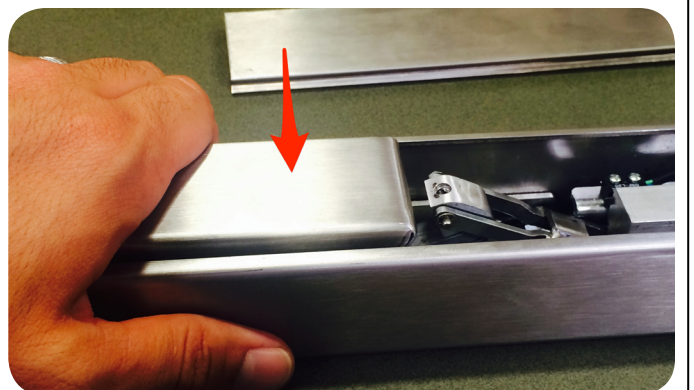
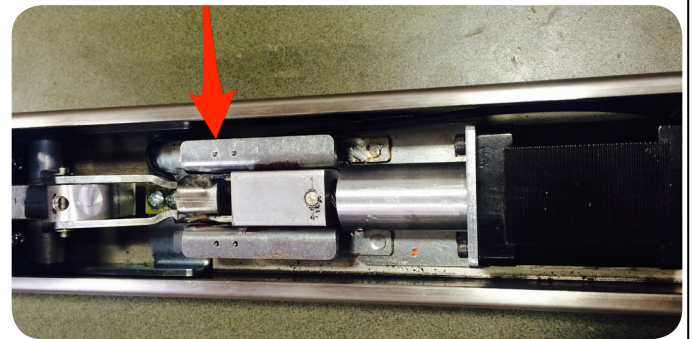
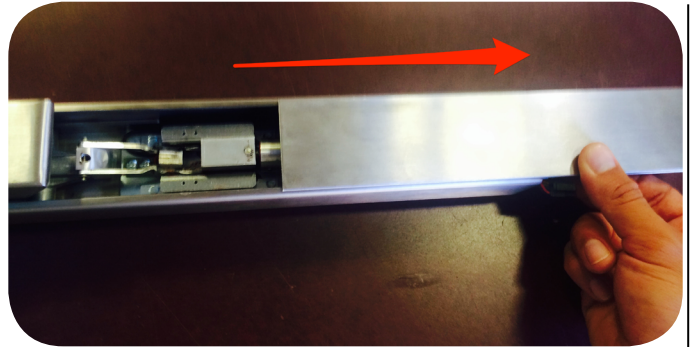
Kit Includes

- A. 1 - REX sticker
- B. 2 - Phillips head screws
- C. 2 - Washers
- D. 1 - Cable tie mount
- E. 1 - REX switch with 4' Lead
- F. 1 - Cable tie

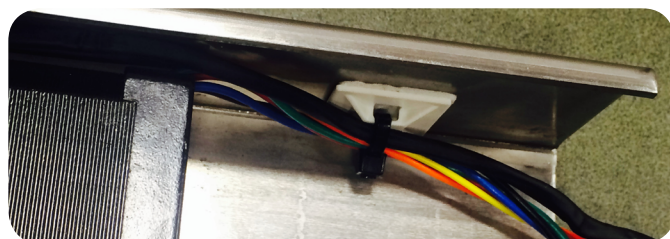
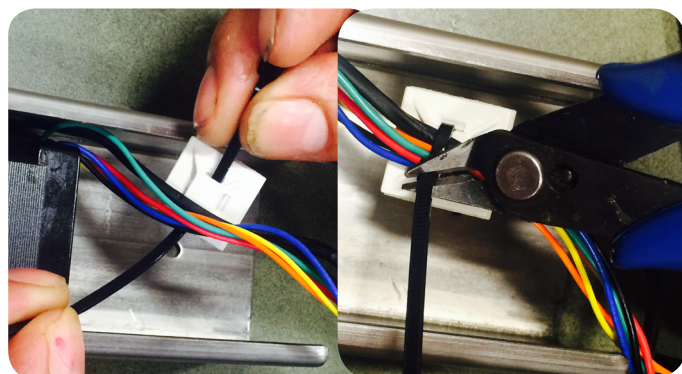
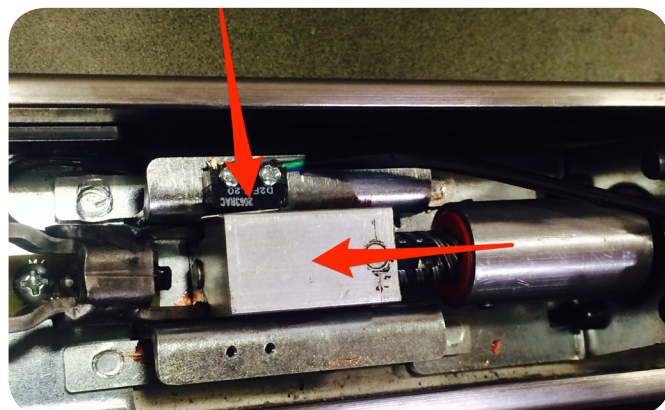
Tools Required

- Phillips head screwdriver

- Remove end cap and filler plate.
- Locate two pre-tapped holes on motor bracket.
- Place small plastic washers (C) on screws (B) provided.
- Line REX switch up with activating lever to the left & install both screws. Do not overtighten. When device is activated motor block will move forward & trigger switch.
- Test make sure switch is making proper contact depress push pad.



- While push pad is depressed check to make sure motor block is activating switch.
- Run wires down along the side of motor.
- Putting zip tie through cable tie mount. Secure wires & clip off excess tie.
- Place sticky side of the cable tie mount onto the inside of the baserail.
- Test switch to confirm proper operation. After replace filler plate & end cap.





RX9800-M

TECHNICAL INFORMATION

Specifications

- Rating: 5A @120VAC
- Configuration: Green - Common (C)
Blue - Normally Open (NO)
Gray - Normally Closed (NC)

Troubleshooting & Diagnostics

If switch does not trigger correctly. Check activating lever arm on switch & re-adjust to make sure it is making good contact with motor block when it moves forward.