



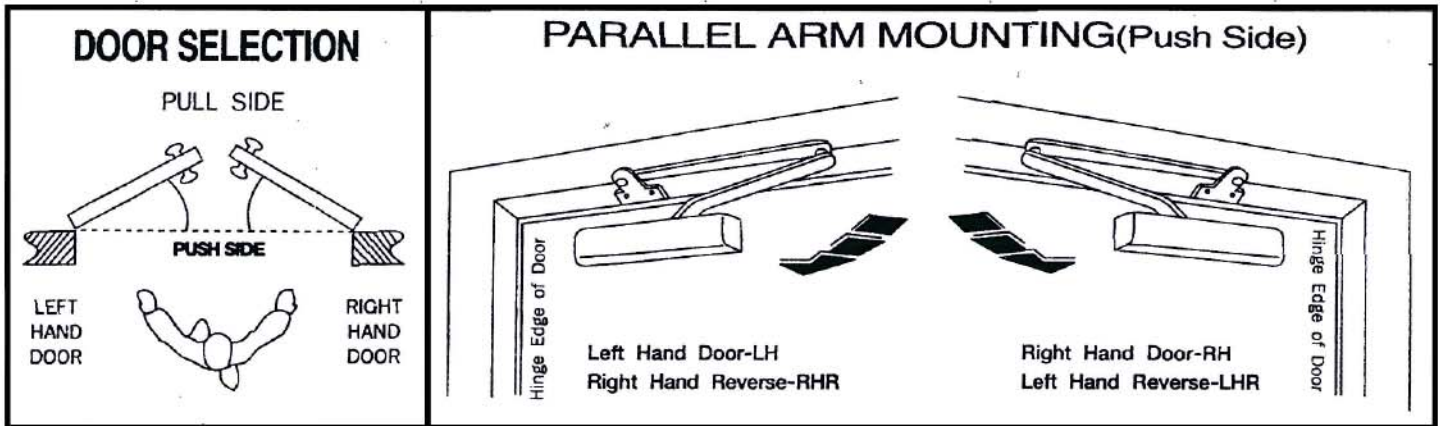
801 SERIES DOOR CLOSER SUPER RIGID PARALLEL ARM

INSTALLATION INSTRUCTIONS FOR CAL-ROYAL 801 SERIES DOOR CLOSERS

HOLD OPEN & NON-HOLD OPEN TYPE

MODEL: SPAS / 900 (NON-HOLD OPEN)

HOSRPS / 900 (HOLD OPEN)



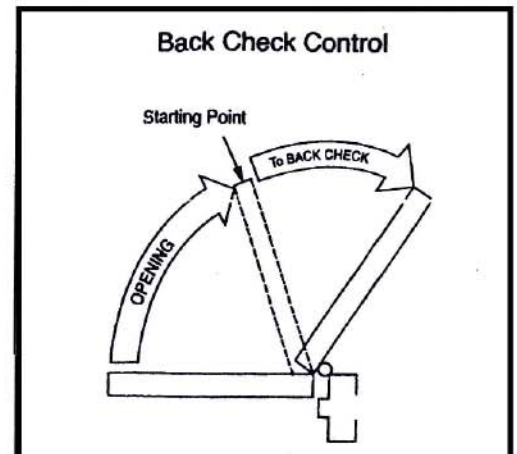
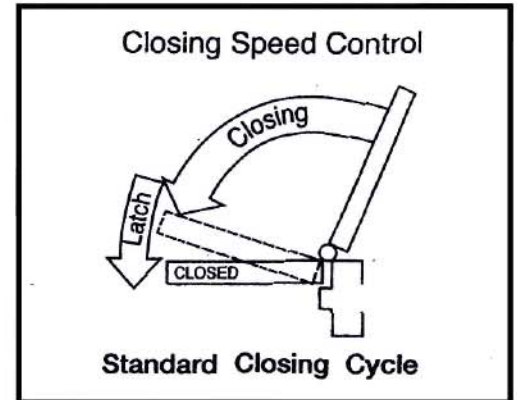
GENERAL DESCRIPTIONS

The 801 series closers are non-handed for right or left hand doors designed to meet entrance accessibility requirements. The 801 series are spring power adjustable for all exterior/interior doors up to 58" (1470mm) wide doors and up to 330 Lbs (150Kg) weight.

Adjust the spring power before installing the door closer according to the "POWER ADJUSTMENT CHART FOR DOOR SELECTION" as shown on page 4.

The 801 series closers are installed BACK CHECK function as a standard which is essential to the proper operation of the SUPER RIGID PARALLEL ARM. Use just enough to prevent arm from striking stop with impact.

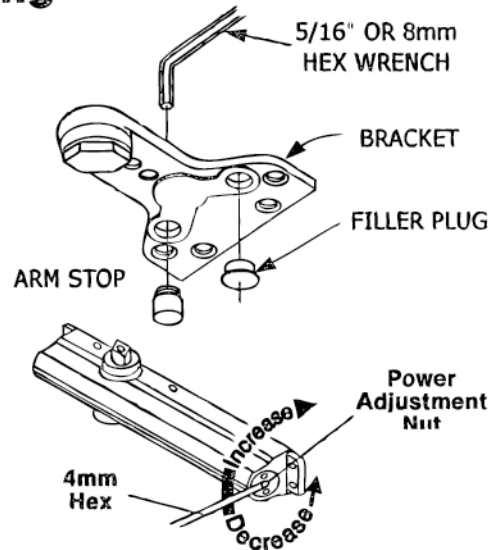
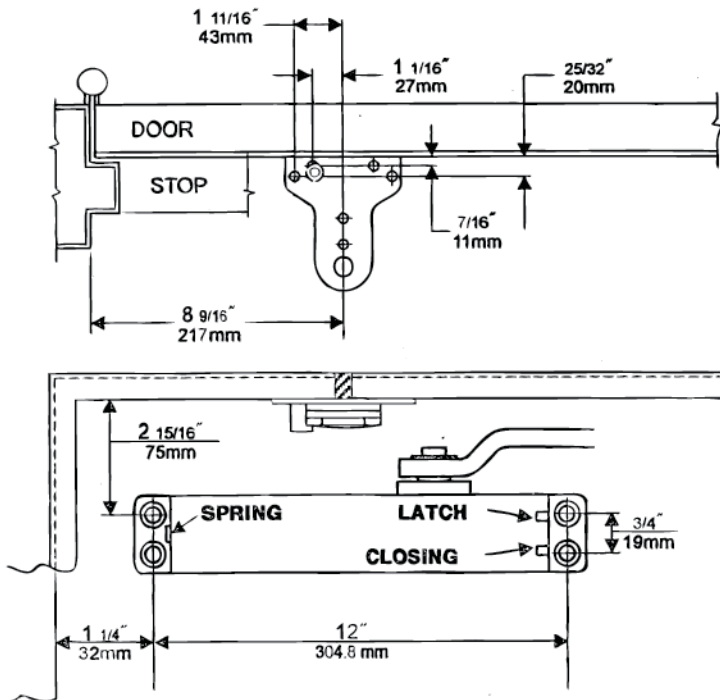
The delayed action (optional) function can not be used for this arm because this arm permits maximum 100° door open angle.



CAL-ROYAL PRODUCTS INC. (HARDWARE DIVISION)
6605 FLOTILLA AVE; CITY OF COMMERCE, CA 90040 U.S.A
E-MAIL:sales@cal-royal.com
PHONE:323-888-6601 FAX: 323-888-6699

INSTALLATION INSTRUCTIONS CUSH ARM, CUSH HOLD OPEN ARM

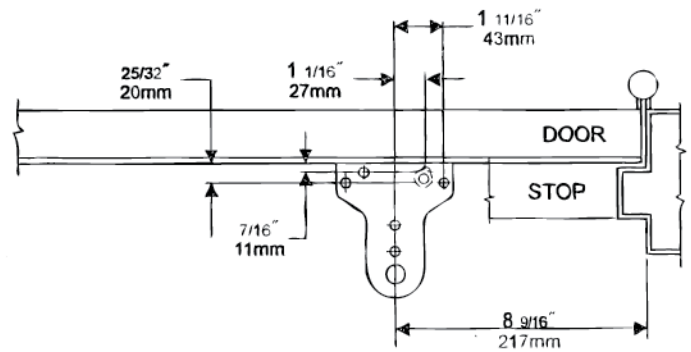
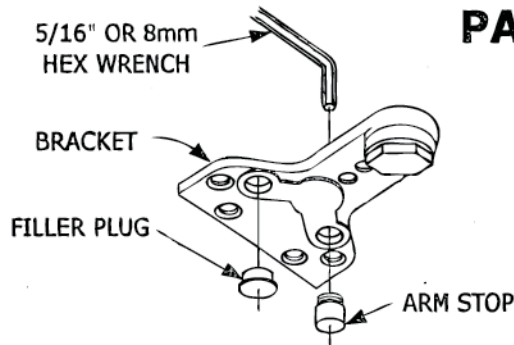
PARALLEL ARM(PUSH SIDE) Mounting LEFT HAND DOOR SHOWN



POWER ADJUSTMENT CHART

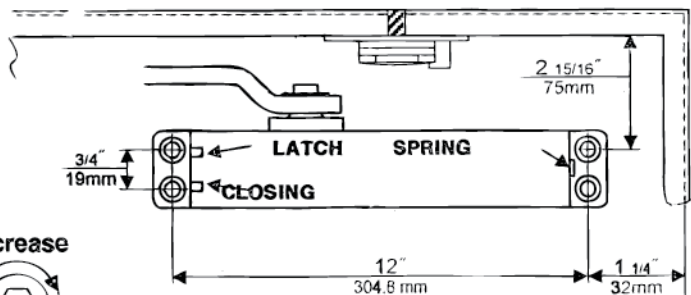
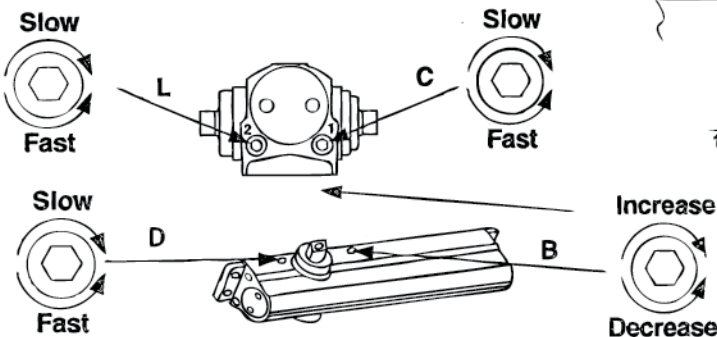
MAXIMUM DOOR WIDTH		TURNS REQUIRED
EXTERIOR DOORS	INTERIOR DOORS	
	8.5 lb-f	6 TURNS C.C.W.
8.5 lb-f	34" (762)	3 TURNS C.C.W.
30" (762)	38" (762)	PRESET
36" (914)	48" (762)	3 TURNS C.W.
42" (1067)	54" (762)	7 TURNS C.W.
48" (1219)	60" (762)	12 TURNS C.W.

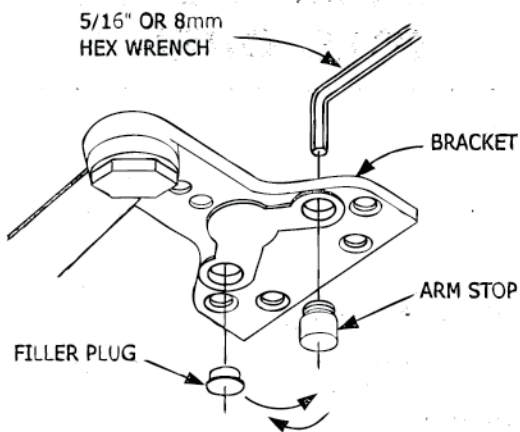
PARALLEL ARM(PUSH SIDE) Mounting RIGHT HAND DOOR SHOWN



DOOR CLOSER ADJUSTMENT

- L: LATCH SPEED VALVE
- C: CLOSING SPEED VALVE
- D: DELAY SPEED VALVE
- B: BACKCHECK VALVE





INTERCHANGEABLE FOR DOOR HANDING

THE HAND MUST BE CORRECT BEFORE THE BRACKET IS MOUNTED TO THE DOOR STOP(TOP JAMB).

Refer to page 1.

FOR LEFT HAND DOORS

All brackets are shipped assembled for LEFT HAND DOOR. Insert 5/16" (8mm) hex wrench into ARM STOP and turn anti-clockwise to seat as tightly as possible.

Push filler plug in firmly.

FOR RIGHT HAND DOORS

Pull filler plug out of bracket.

Using a 5/16" (8mm) hex wrench turn ARM STOP clockwise to remove from bracket insert in hole marked "R". Turn hex wrench clockwise to seat ARM STOP as tightly as possible. Push filler plug into other hole.

INSTALLATION SEQUENCE

LEFT HAND DOOR SHOWN – RIGHT HAND DOOR OPPOSITE



INSTALLATION INSTRUCTIONS

1. Using template dimensions shown above, mark FORE(4) HOLES ON DOOR for door closer and THREE(4) HOLES ON FRAME for parallel bracket.
2. Mount closer on door using screws provided. SPEED ADJUSTING VALVE MUST BE POSITIONED TOWARD AWAY FROM HINGE EDGE.
3. Adjusting spring power to match door width or weight as indicated by Power Adjustment Chart shown on page 1.
4. Mount closer on door to dimensions shown on page 1

IMPORTANT REMARKS

Do not allow door to slam into frame.

A normal standard closing time from 90° open position is 5 to 7 seconds evenly divided between main closing (sweep) speed and latching speed Adjust the CLOSING speed first, then adjust the LATCHING speed.

For slow closing speed of door turn speed adjusting valve of "C" (closing speed) clockwise and anti-clockwise for fast.

Latching speed control of door is the same manner as closing speed adjustment.

ADJUSTABLE BACK CHECK FUNCTION

This function is essential to the proper operation of the SUPER RIGID PARALLEL ARM. Use just enough to prevent arm to striking stop with impact. See page 1.

ATTACH COVER

Install cover securely using screws provided.

HOW TO HOLD-OPEN (90° STOP)

A quarter turn on the HOLD-OPEN CONTROL HANDLE engages or disengages hold-open.

