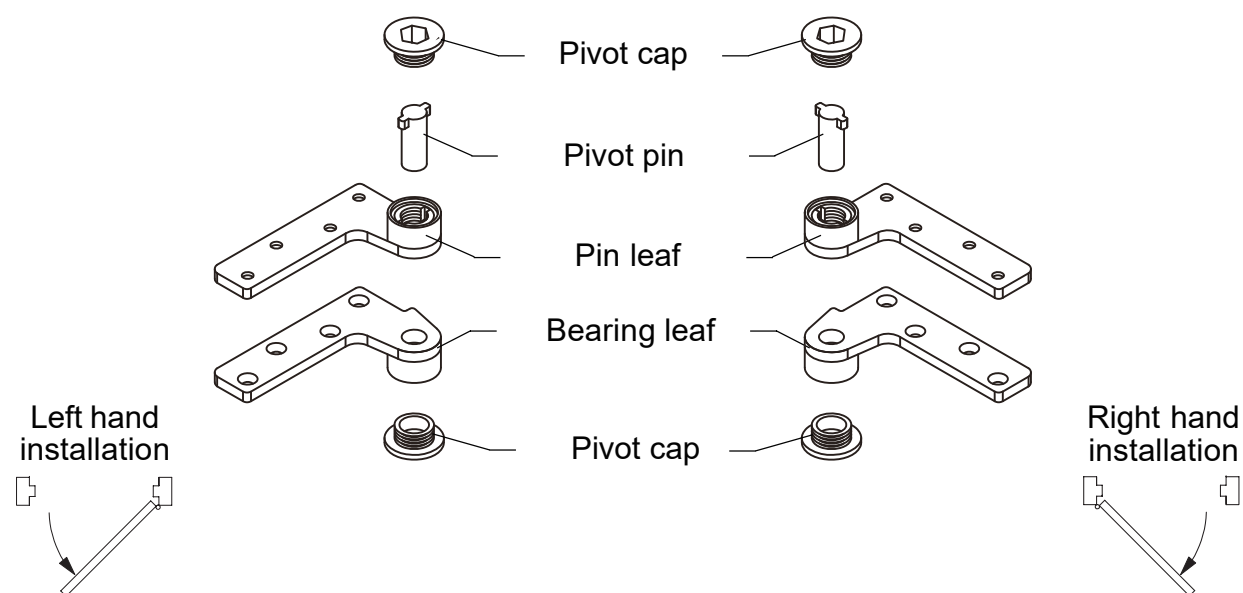


## PV001 Series 3/4" Heavy Duty Offset Top Pivot



1. Prepare and mortise top of door and head jamb to receive pivot set. Determine pivot location using dimensions on reverse side. The pivots are non-handed. To determine hand of door and proper pivot position, see diagrams above.
2. Locate, drill, and tap M6x20 mounting holes for metal door or metal frame. Locate and drill pilot holes for ST5.5x38 wood screws for wood door or wood frame.
3. Install pivot leafs into head jamb and top of door with screws provided.
4. With door in open position (about 90° to jamb), carefully fit door onto bottom pivot at a slight angle. Tip door into vertical position, **aligning top pivot leafs in door and jamb**. With pivot leafs aligned, **insert pivot pin downward into pivot set**.
5. Install pivot caps with allen wrench provided.
6. To remove door from jamb: remove pivot caps, thread a M6 machine screw upward into end of pivot, pull pivot pin out of pivots. Door can now be removed from opening.



### CAUTION

Improper pivot set installation can lead to personal injury or property damage. Follow all instructions carefully.



### NOTE

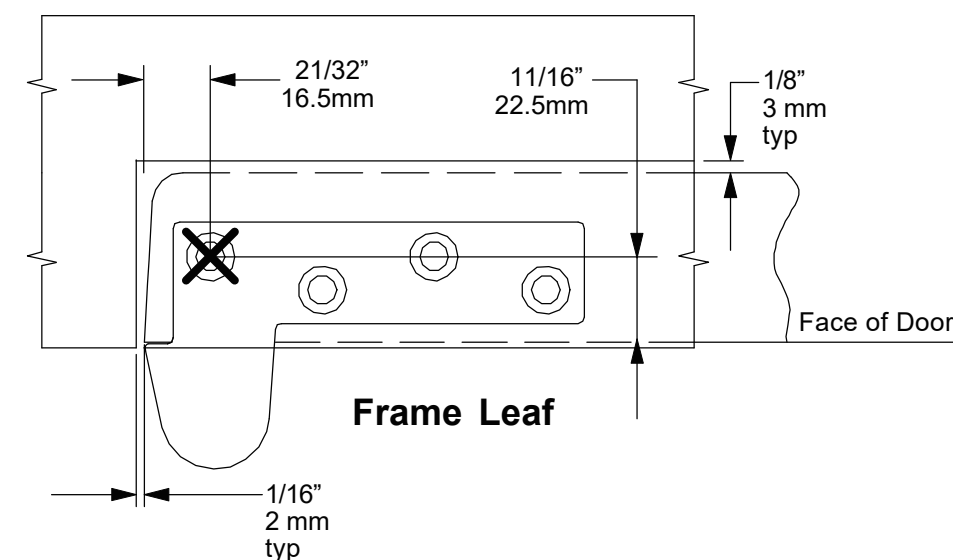
It is very important for installer to verify that center line of top pivot point lines up with center line of bottom pivot point before final installation. Heel edge of door must be beveled 1/8" (3mm) in 2" (51mm) as shown below.



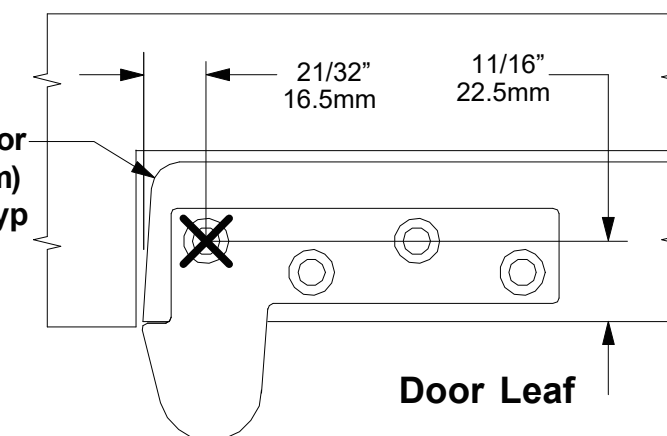
### NOTE

Mortise depth for pivot leafs is 1/4" (6mm).

Right hand installation shown;  
left hand opposite



Bevel heel edge of door  
1/8" (3mm) in 2" (51mm)  
with 3/16" (5mm) rad, typ



# TEMPLATE FOR PV001 PIVOT SET TOP PIVOT

Right hand door & pivot shown.  
Left hand opposite.

**Note:**

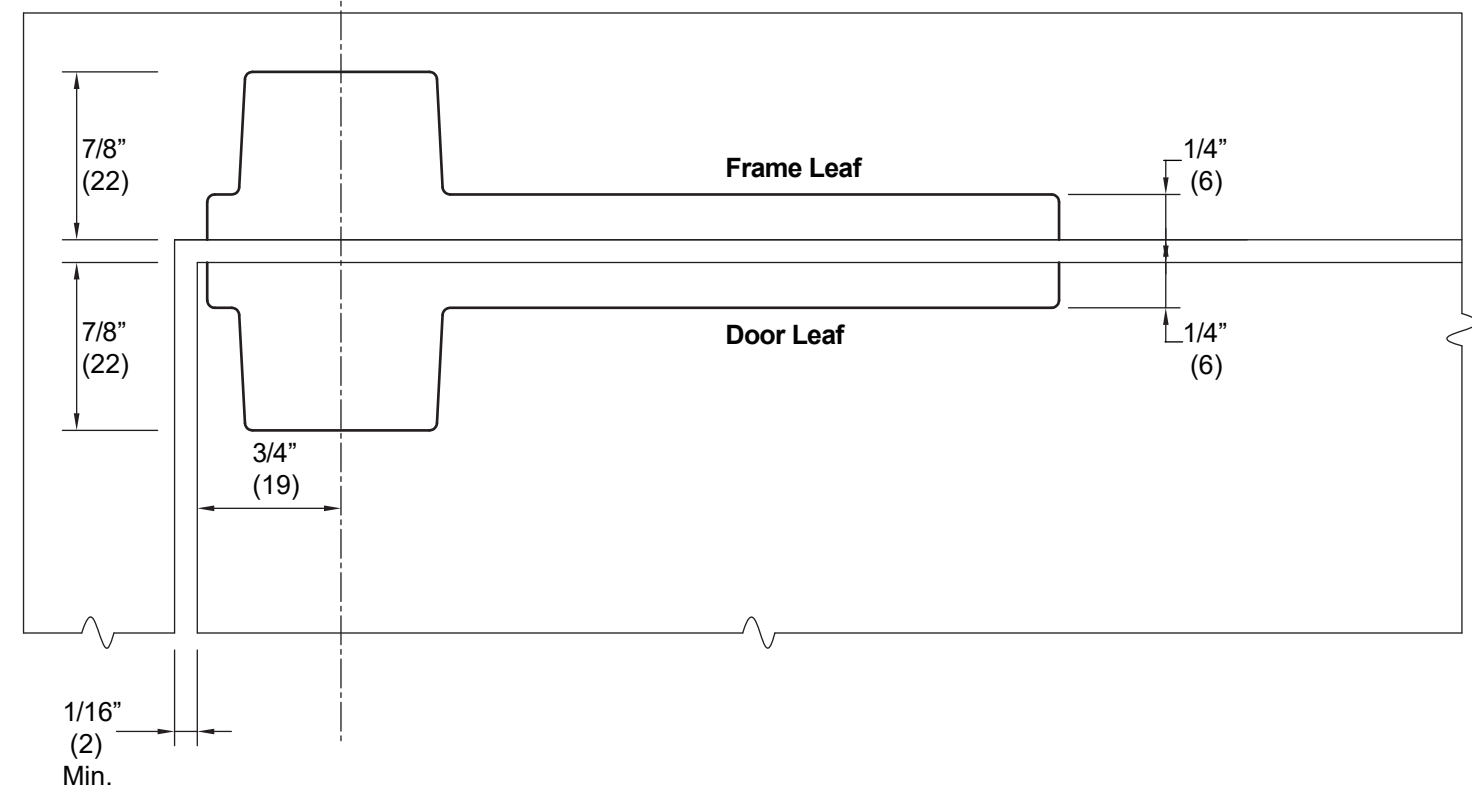
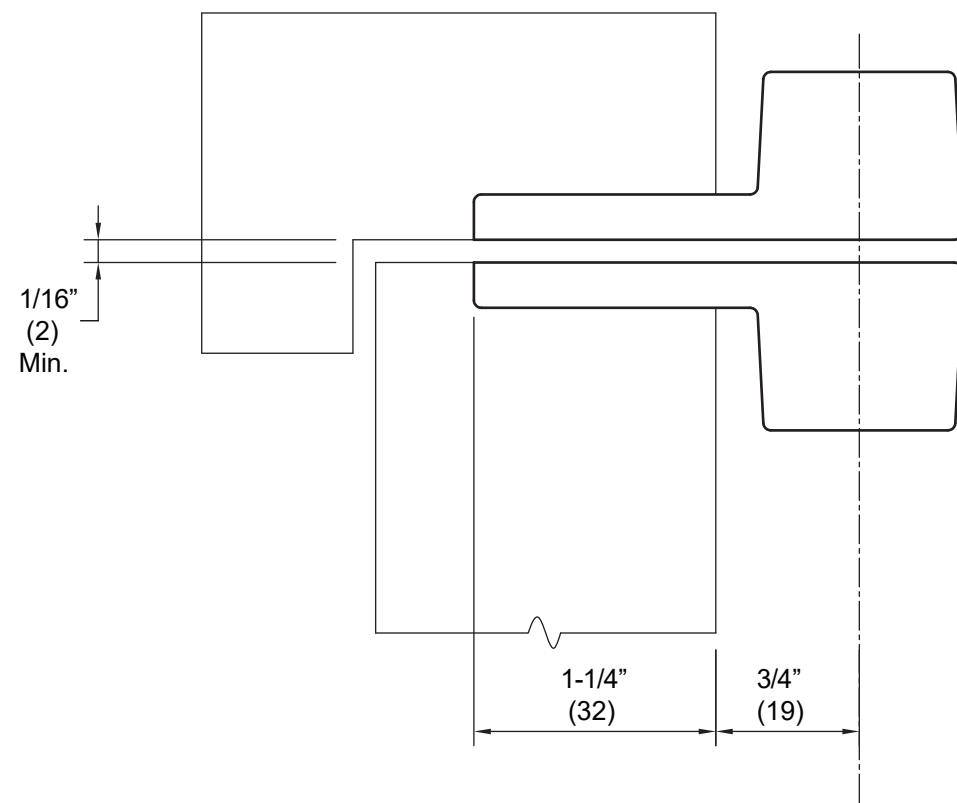
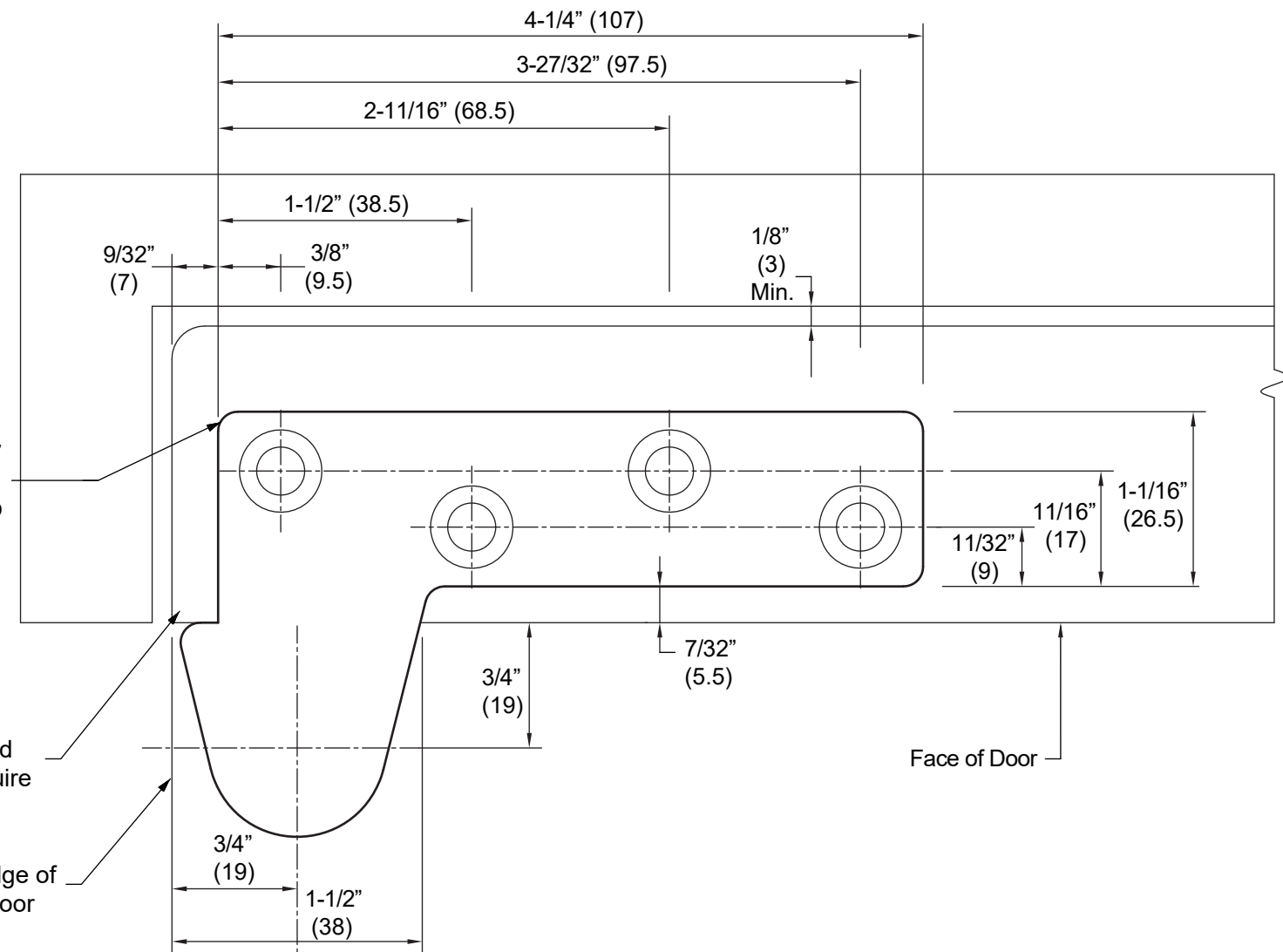
- 1, Installer must verify that centerline of the pivot point lines up with the centerline of bottom pivot point.
- 2, Bottom pivot set should be mounted first in most installations.
- 3, Heel edge of door must be beveled  $1/8"$  (3mm) in  $2"$  (51mm) as shown.
- 4, Pivots mfg. to accept M6x20 machine screws and ST5.5x38 wood screws.
- 5, Templating for door leaf & frame leaf is identical.
- 6, Reinforcing for hollow metal doors and frames is needed.

Bevel heel edge of door  
 $1/8"$  (3mm) in  $2"$  (51mm)  
with  $3/16"$  (5mm) rad, typ

Section of head jamb may require small notch

Edge of door

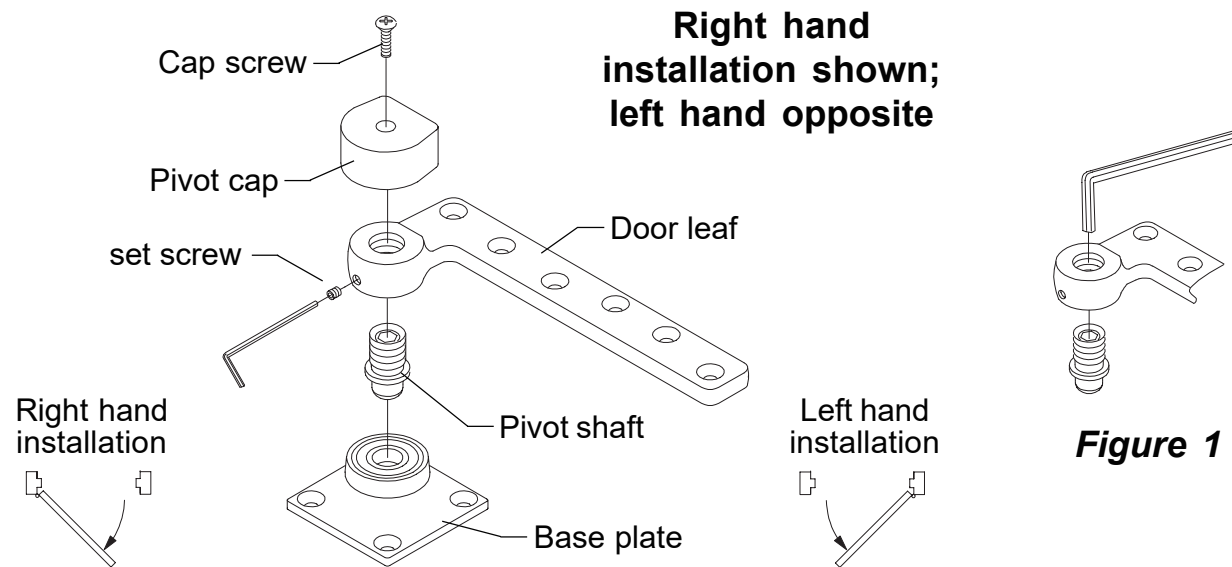
Face of Door



Note: dimensions in ( ) are millimeters.

# Installation Instructions

## PV001 Series 3/4" Offset Bottom Pivot



1. Prepare and mortise bottom of door and floor to receive pivot set. Determine pivot location using dimensions on reverse side. **Be sure to properly locate and mark pivot center point of the base plate.** The bottom pivot set is non-handed. The pivot shaft will thread into either side of door leaf. To determine hand of door, see diagrams above.
2. Prepare bottom of door: Locate, drill, and tap M6x20 mounting holes for metal door. Locate and drill pilot holes for S5.5x38 wood screws for wood door. Mount door leaf in bottom of door with screws provided. Drill 7/16" (12mm) dia. x 3/4" (19mm) deep holes for base plate mounting. Insert and secure anchor pins, then mount base plate to floor with screws provided.
3. At this point, hang door. Refer to instruction sheet packed with top pivot for details.
4. If height adjustment is necessary for proper door clearance, adjust bottom pivot as follows:
  - A. Loosen set screw using Allen wrench provided (see diagram above).
  - B. Use Allen wrench to adjust pivot shaft height as needed (Figure 1).
  - C. Tighten set screw firmly.
5. Fasten pivot cap as shown. Secure with cap screw.



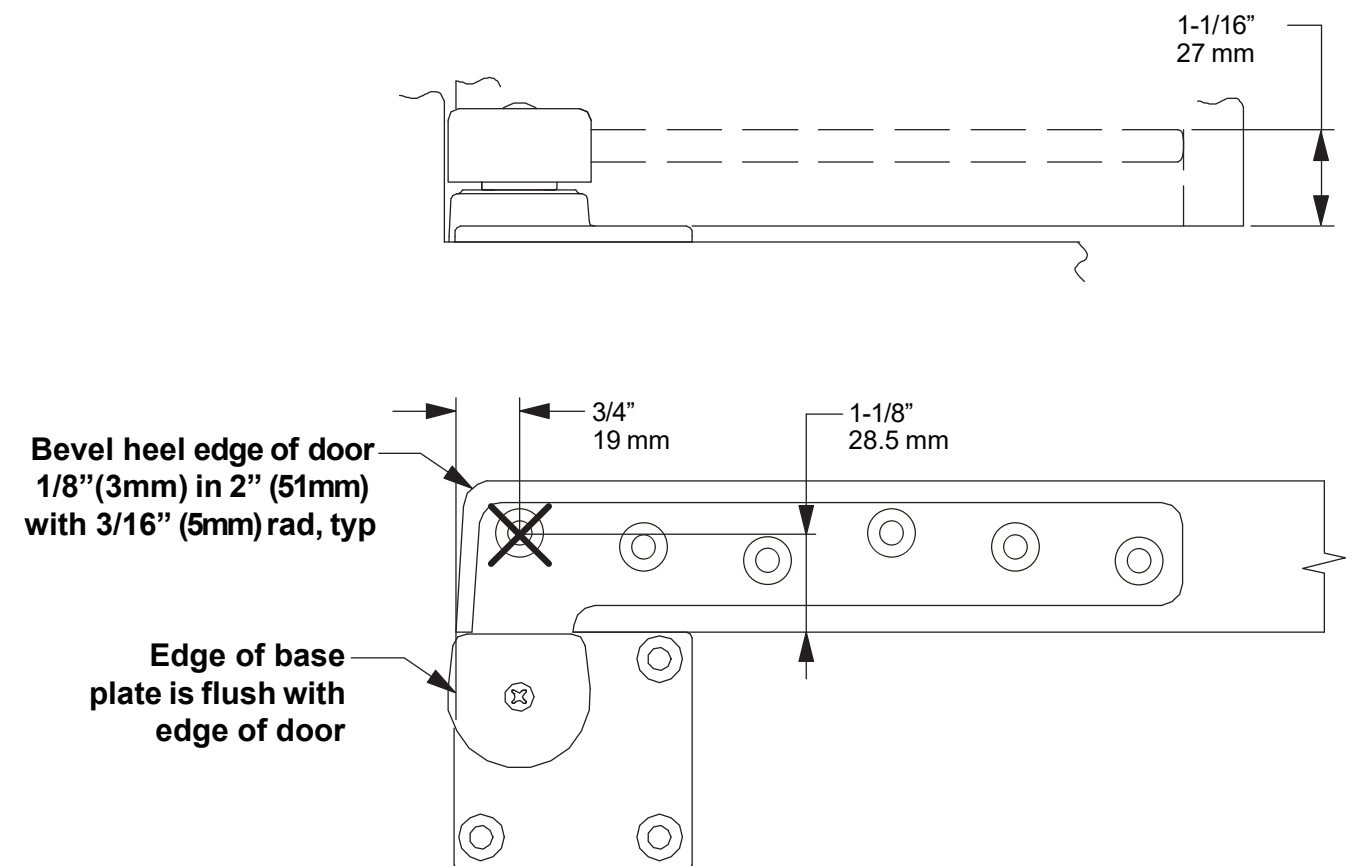
### CAUTION

Improper pivot set installation can lead to personal injury or property damage. Follow all instructions carefully.



### NOTE

It is very important for installer to verify that center line of top pivot point lines up with center line of bottom pivot point before final installation. Heel edge of door must be beveled 1/8" (3mm) in 2" (51mm) as shown below.



Right hand installation shown;  
left hand opposite

# TEMPLATE FOR PV001 PIVOT SET BOTTOM PIVOT

**Note:**

- 1, Installer must verify that centerline of the pivot point lines up with the of the pivot point lines up with the centerline of bottom pivot point.
- 2, Bottom pivot set should be mounted first in most installations.
- 3, Heel edge of door must be beveled  $1/8"$  (3mm) in  $2"$  (51mm) as shown.
- 4, Pivots mfg. to accept M6x20 machine screws and ST5.5x38 wood screws.
- 5, Templating for door leaf & frame leaf is identical.
- 6, Reinforcing for hollow metal doors and frames is needed.

Right hand door & pivot shown.  
Left hand opposite.

Note: dimensions in ( ) are millimeters.

