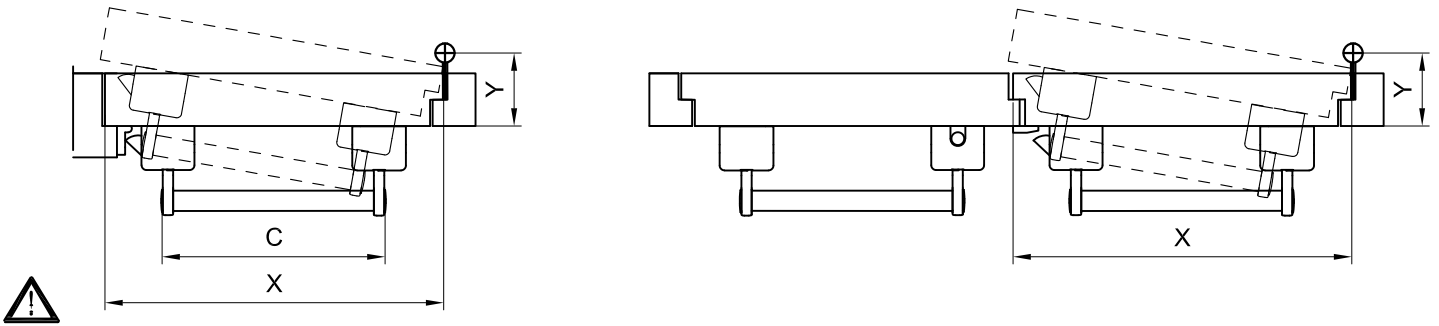


INSTALLATION INSTRUCTION

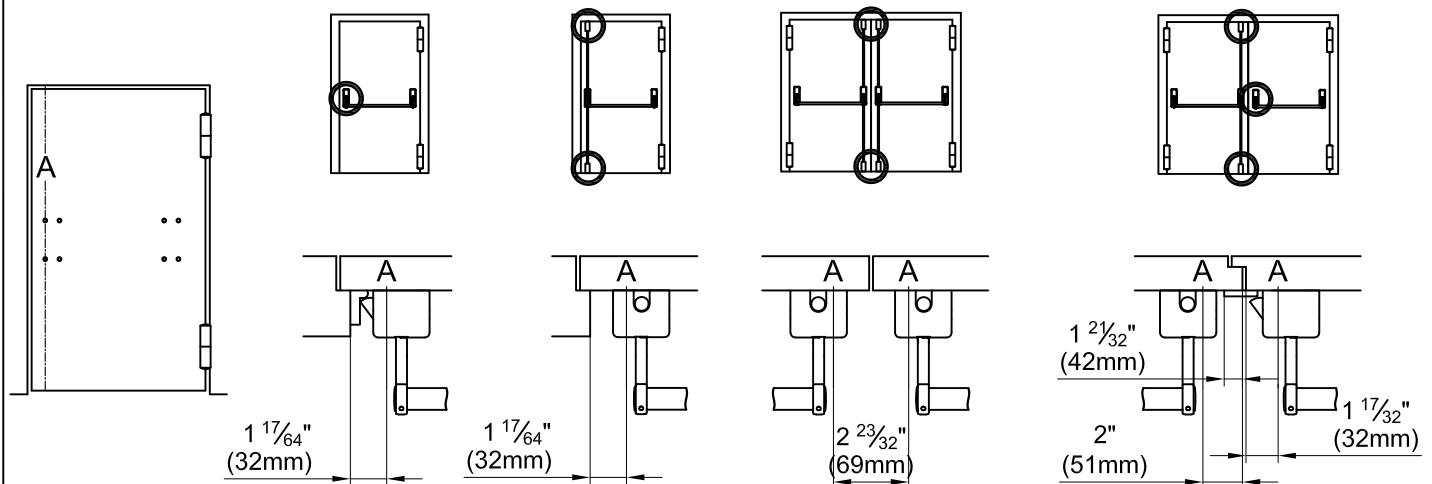
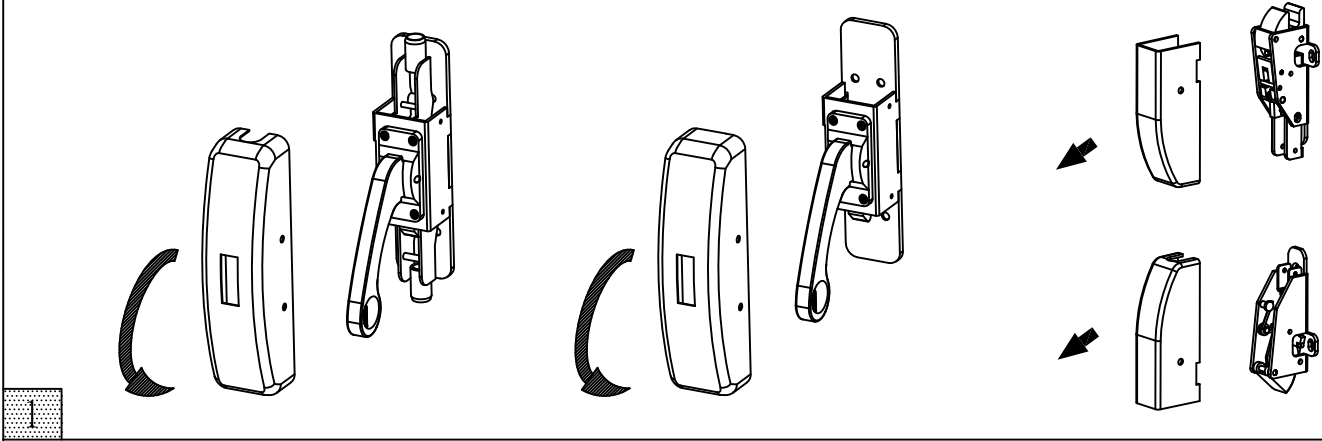
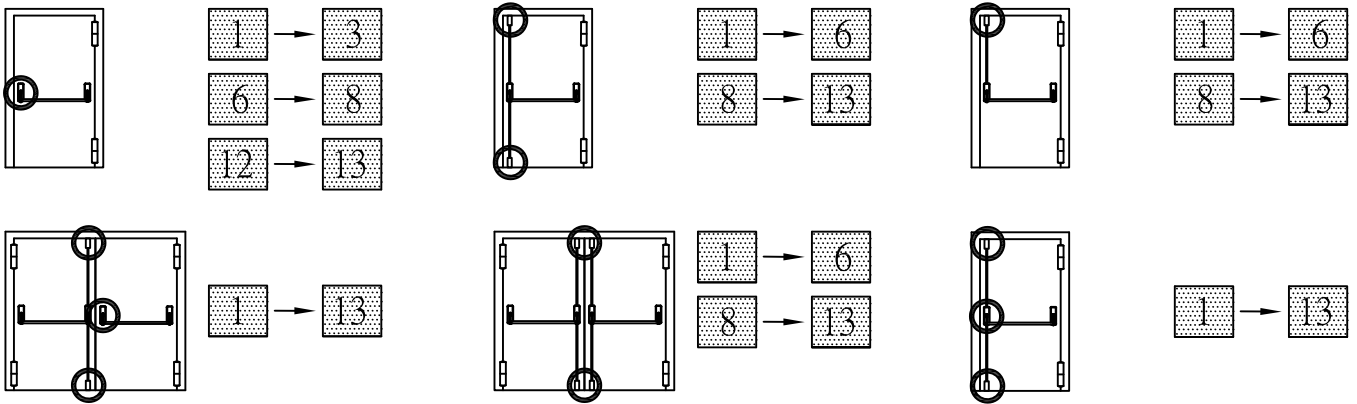
45-RIM / F45-RIM / 45-SVR / F45-SVR EXIT DEVICE

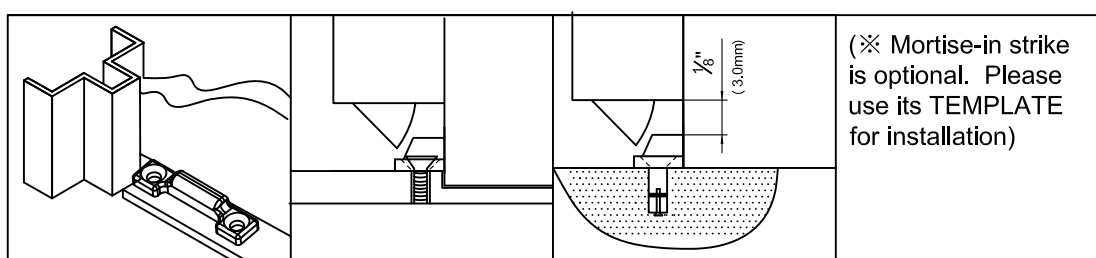
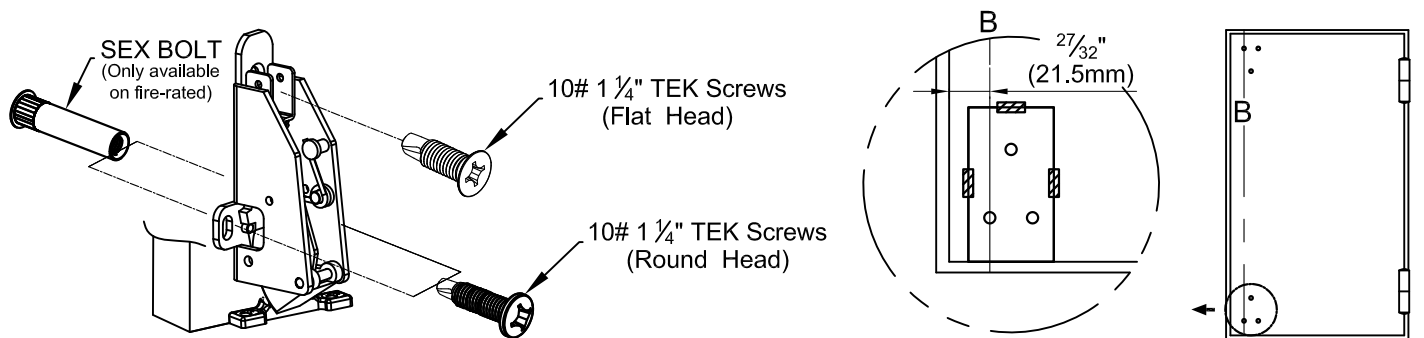
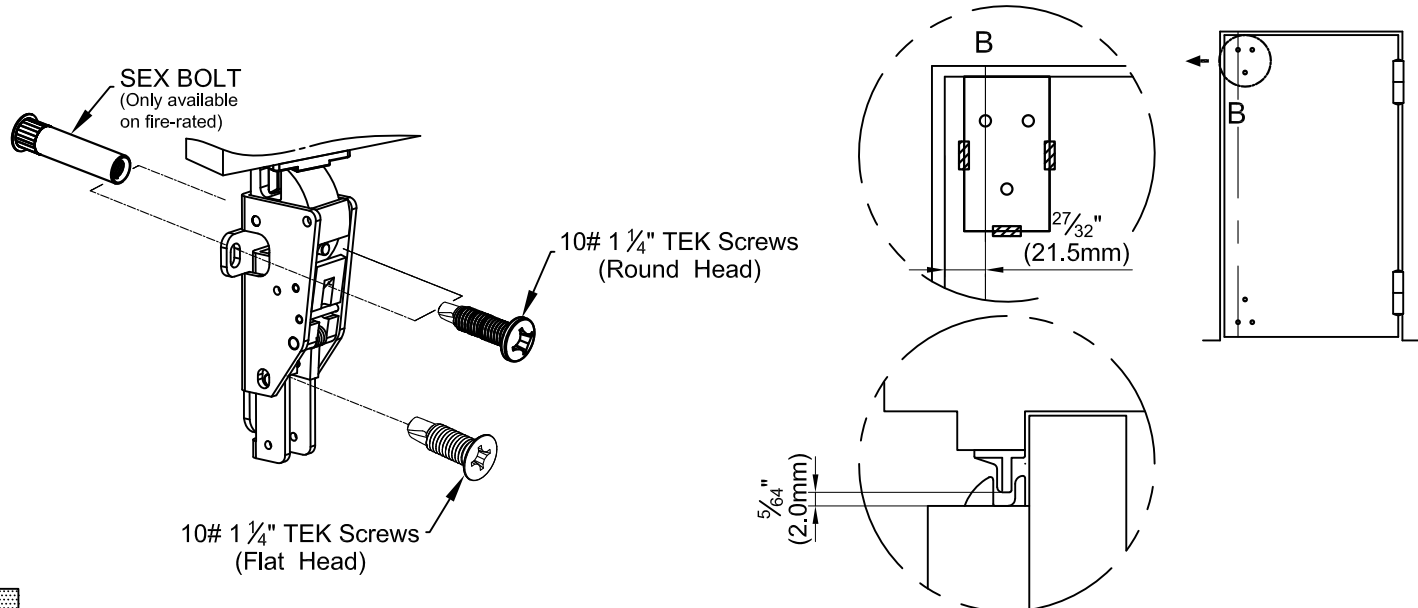
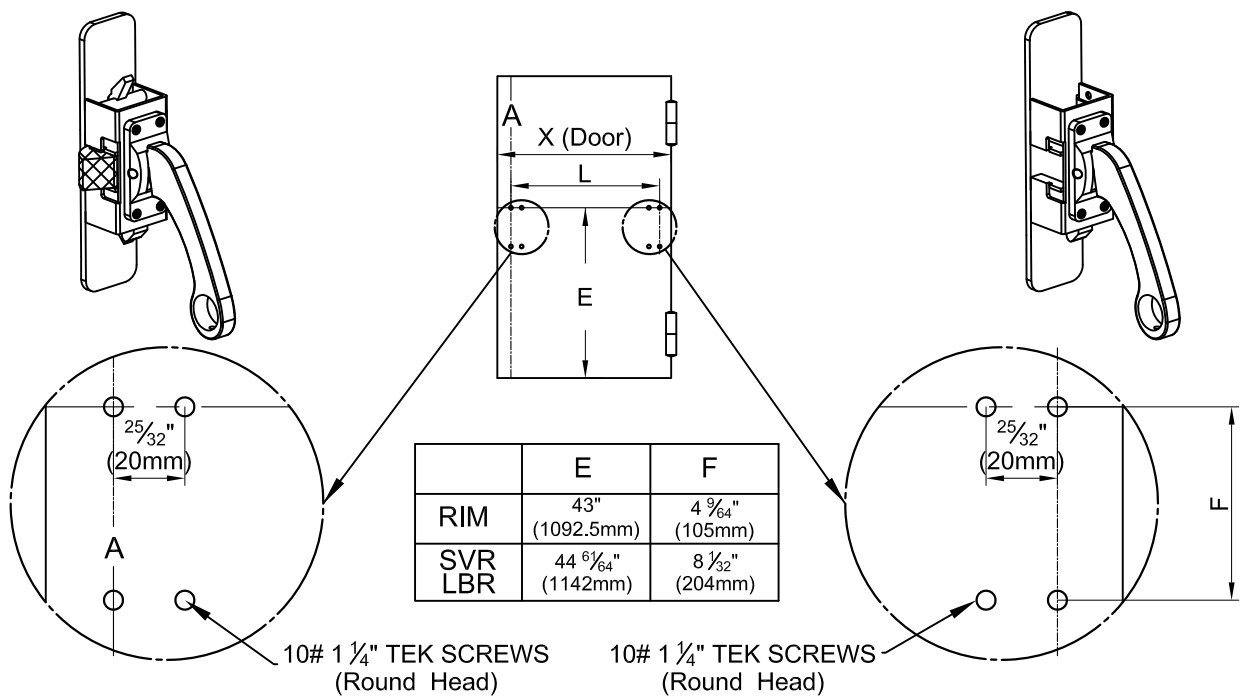


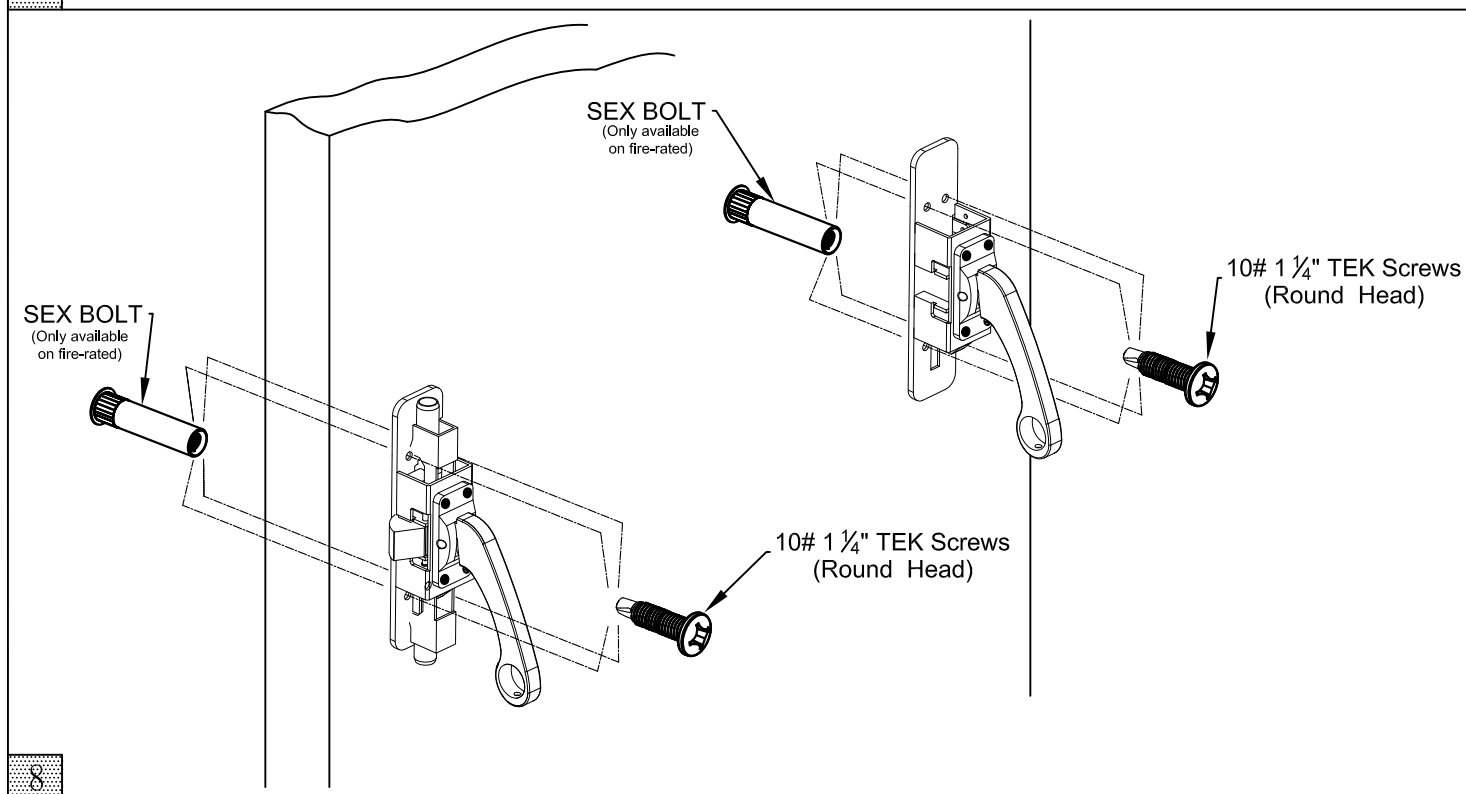
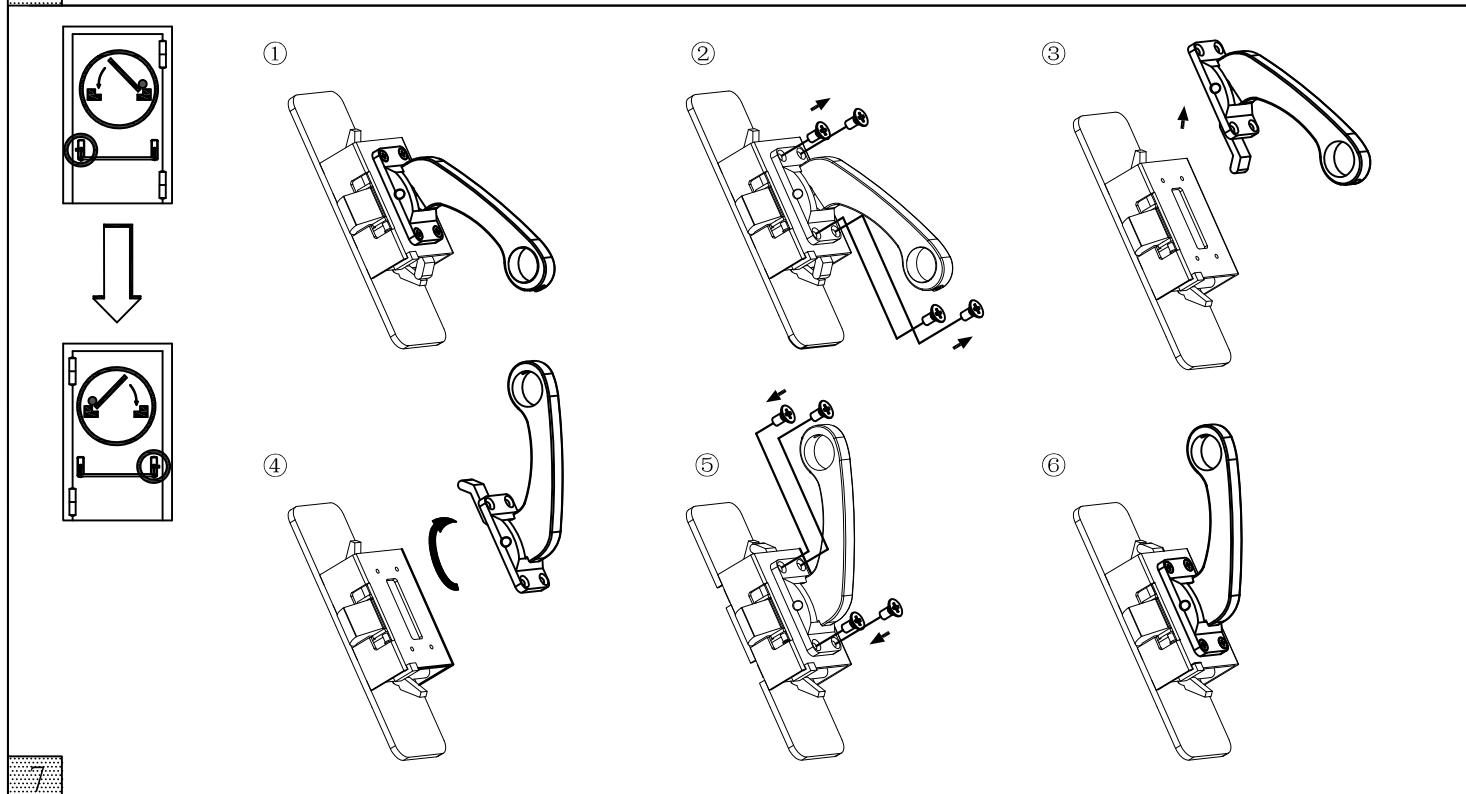
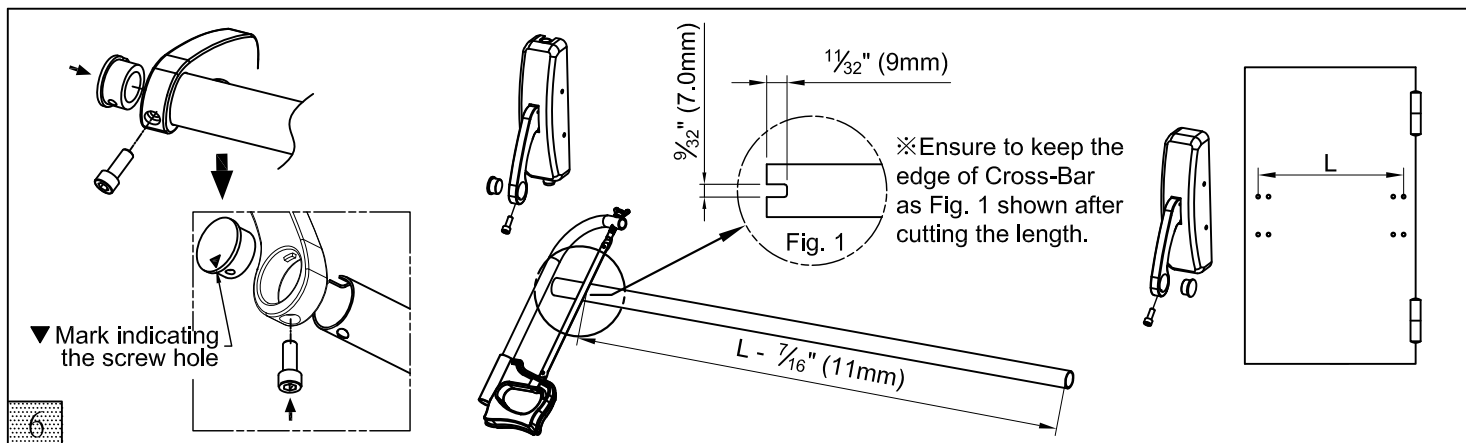
It may be the case that the panic fitting cannot be installed on extreme door situations according to standard measurements (door with X smaller than 1000mm in connection with the distance of the hinge Y bigger than 90mm)

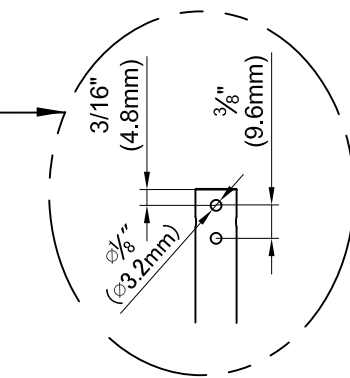
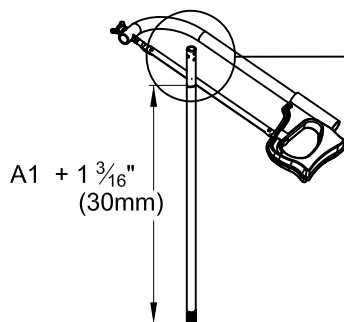
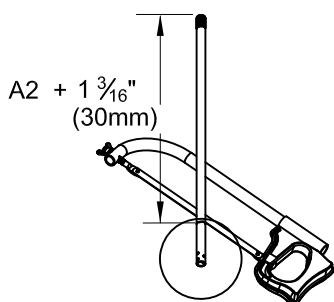
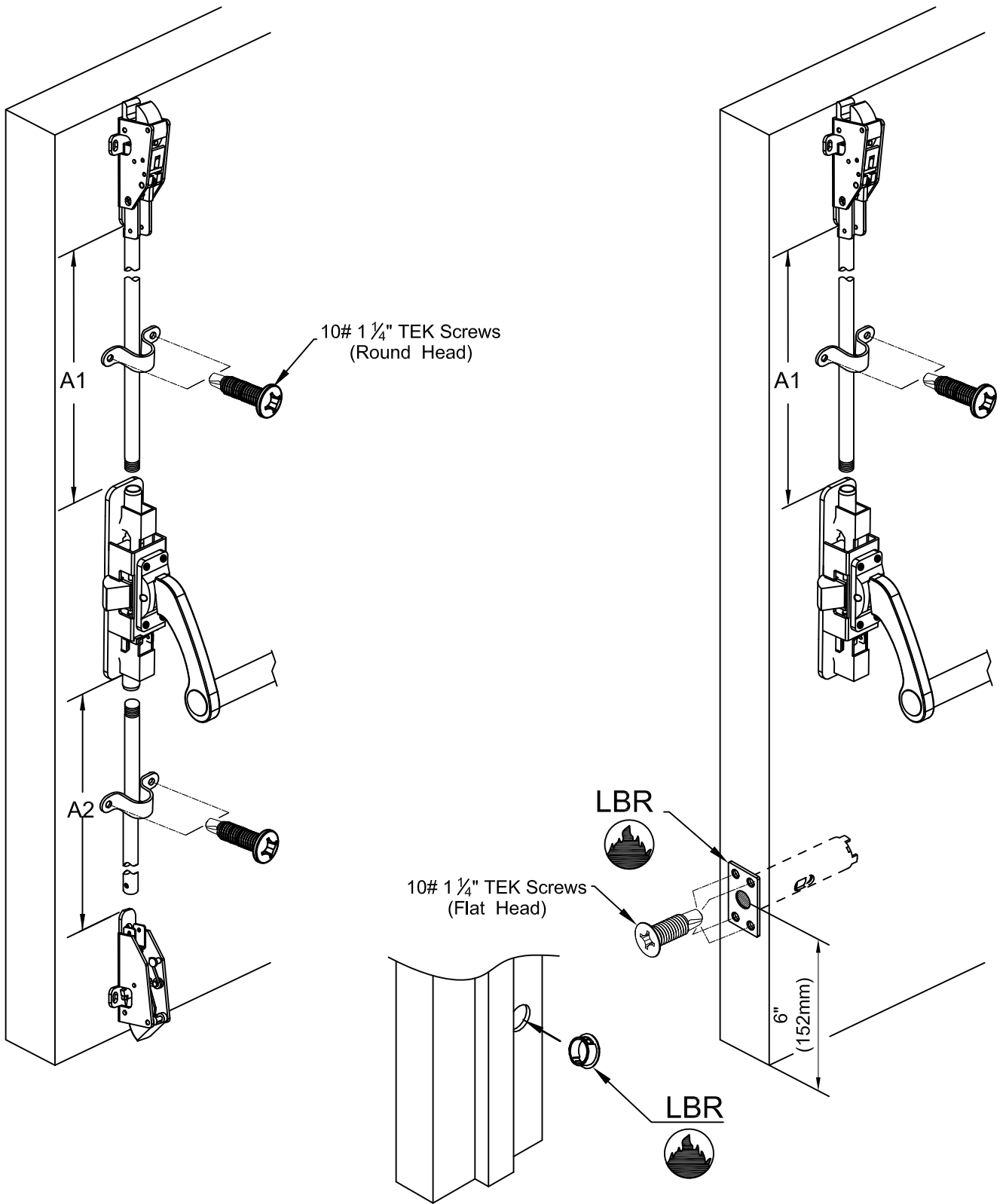
DOOR SIZES

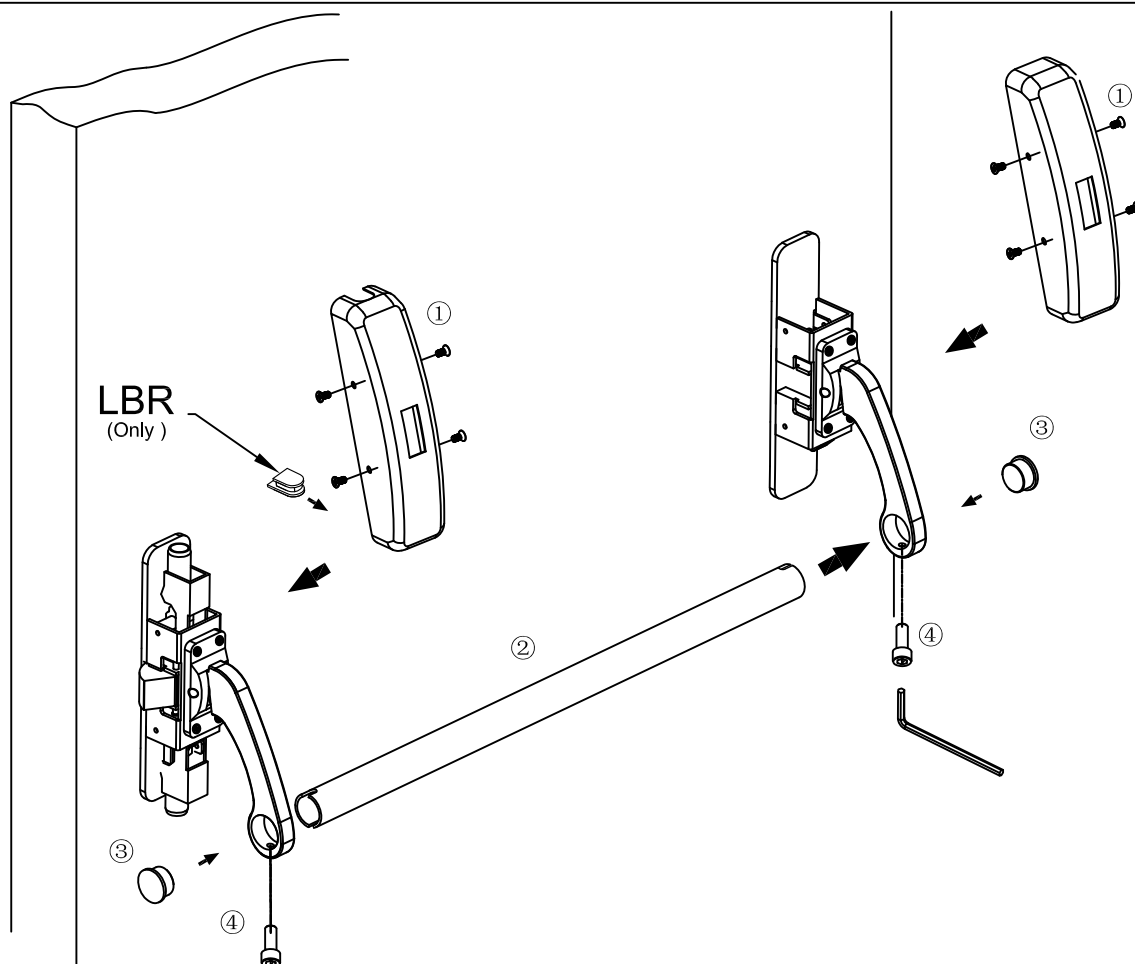
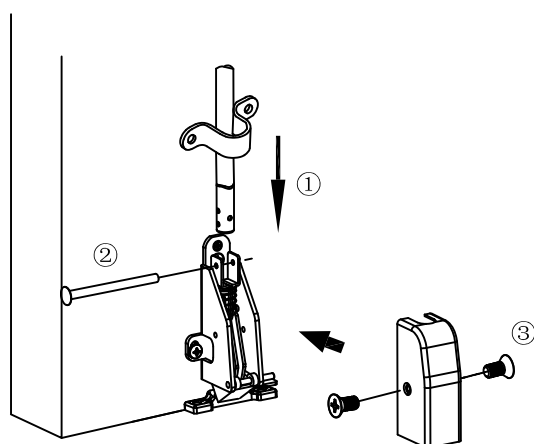
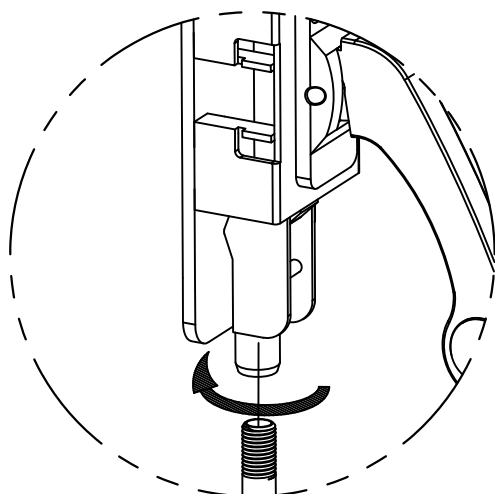
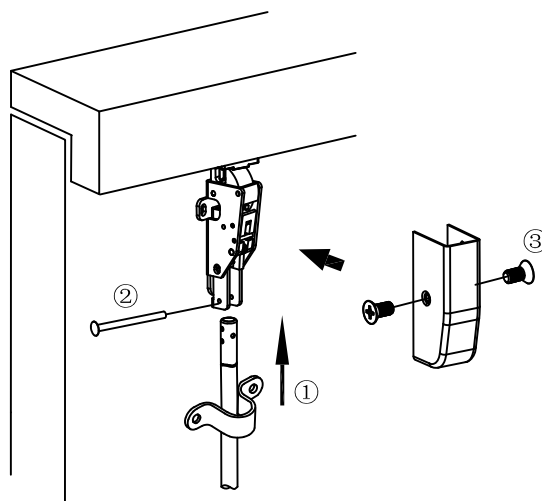
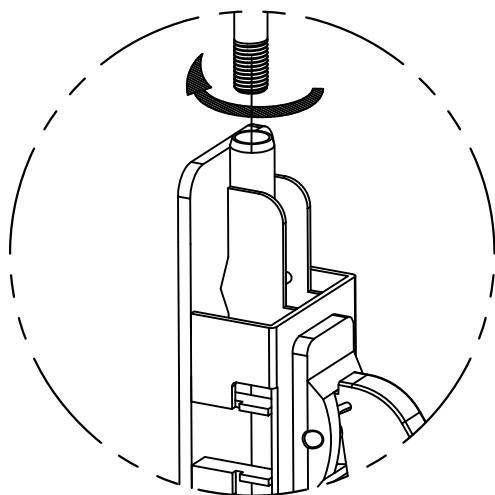
This product is suitable for both ANSI & CE certification . ANSI & UL: $C \geq 50\% X$
CE : $C \geq 60\% X$

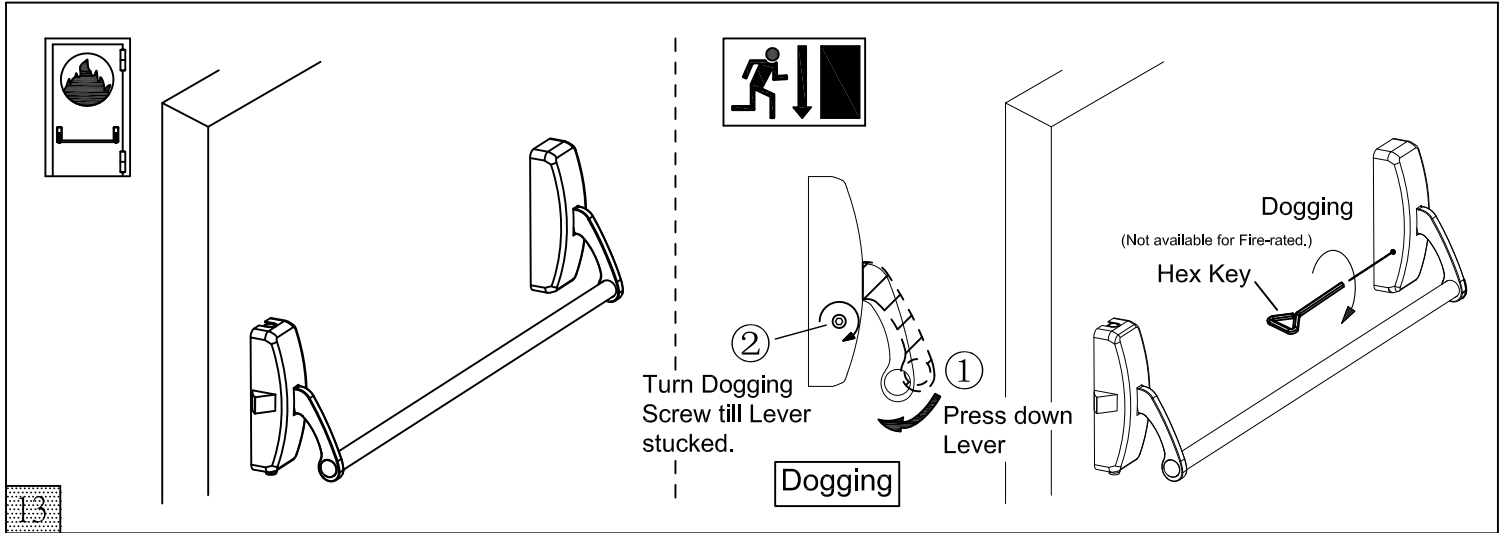












Notice 1 : Tail-piece length

Keep tailpiece $\frac{5}{32}$ "~ $\frac{1}{4}$ " (4~6mm) projected.

(※Projected length might need to be adjusted shorter when door thickness is depressed thinner after trim's installation.)

