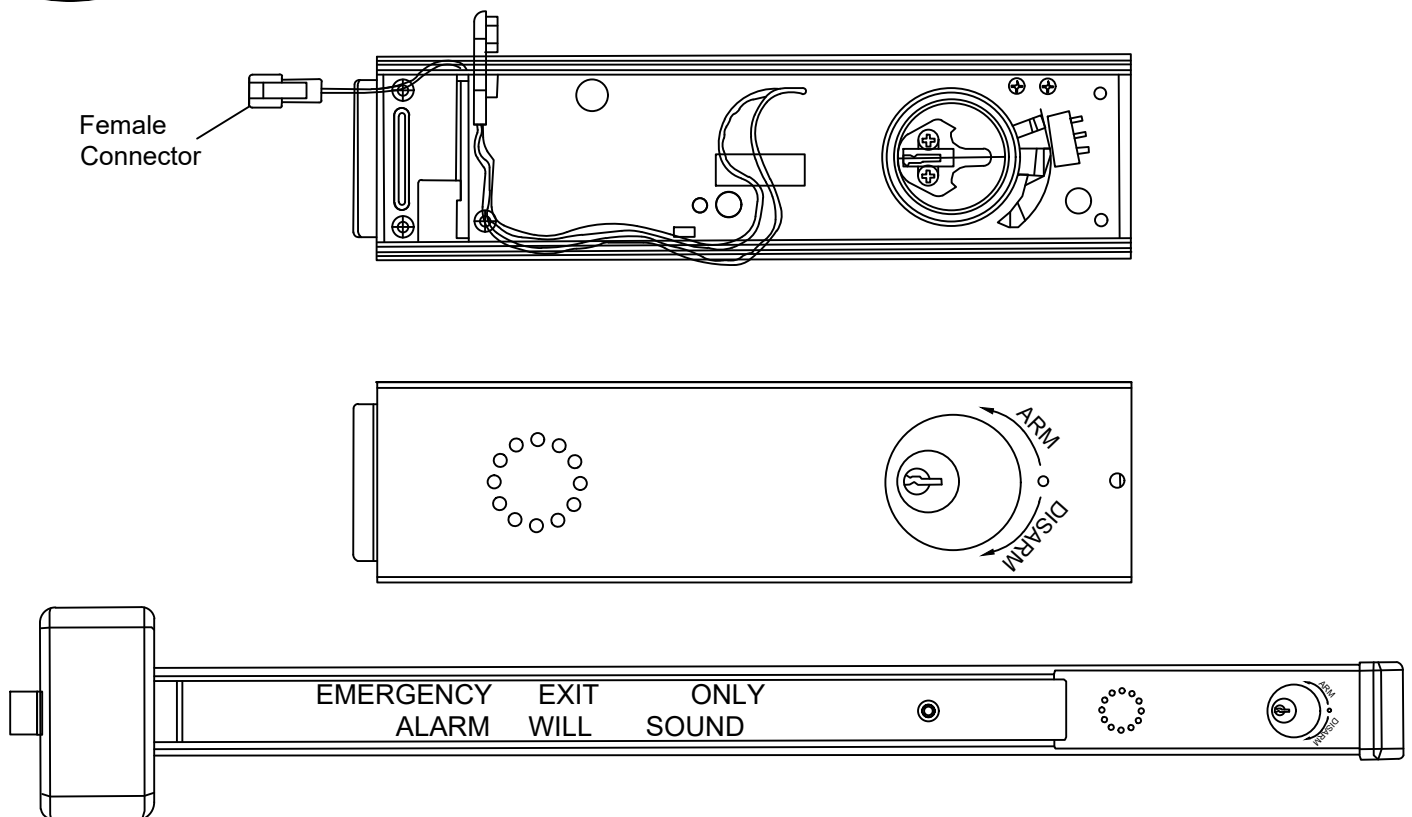




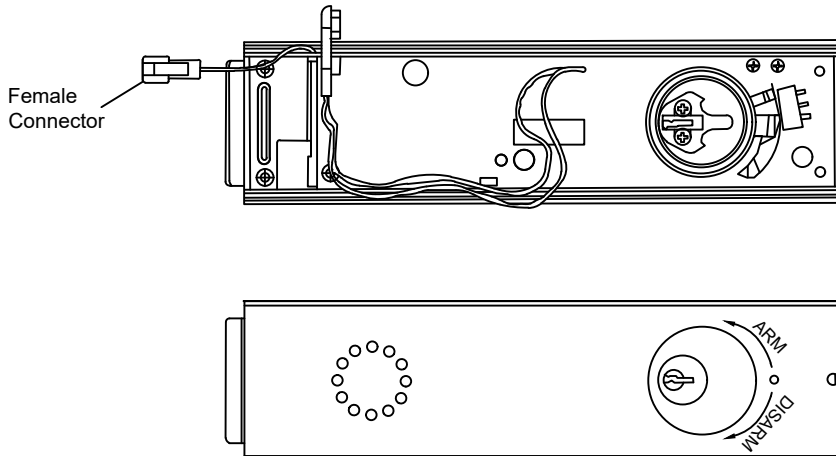
2200 Alarm Exit Hardware Installation

ALRM2200 / FALRM2200



Rim Type Exit Devices

1. Alrm 2200-36 Alarm rim type 36" (panic grade)
2. Alrm 2200-48 Alarm rim type 48" (panic grade)
3. FAlrm 2200-36 Alarm rim type 36" (fire grade)
4. FAlrm 2200-48 Alarm rim type 48" (fire grade)



Vertical Rod Type Exit Devices

Prefix "Alrm" before part #

Dimensions

Alarm units has an internal horn. When the push rail is depressed, the horn sound to provide an means of signalling that the door has been opened and violated.

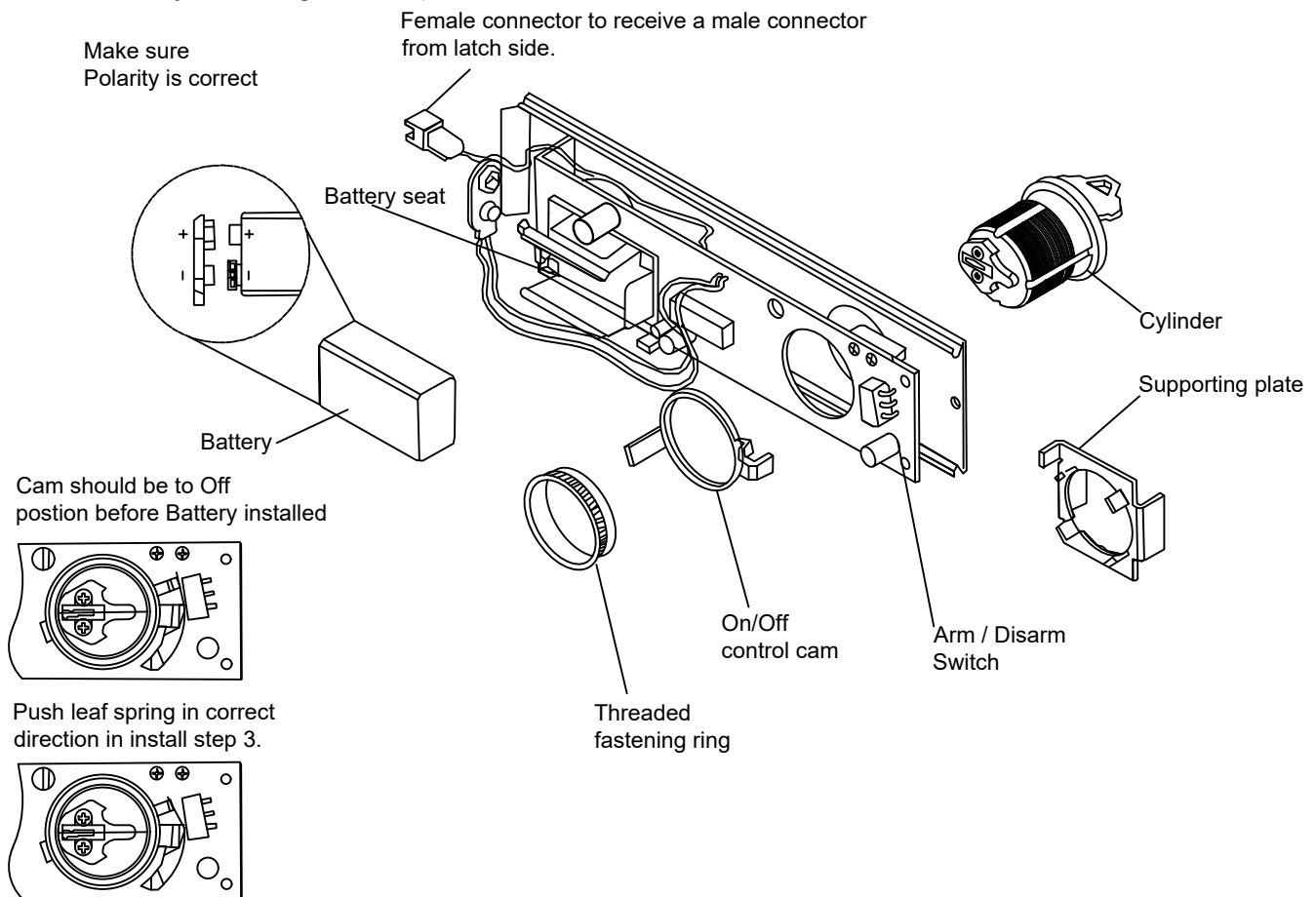
The unit has changeable 2 minute alarm cut off or manual reset. Preset at factory for 2 minute alarm cut off. Jumper cable is provided to switch to continuous alarm.

The key switch to turn the alarm off is a standard 1-1/4" cylinder with "C" keyway. The alarm operates on one standard 9 volt transistor battery. when battery is weak the horn will emit an intermittent signal.

Alarmed kit are supplied with one female connector to receive a male connector from latchbolt side, which is operated by a mag reed switch.

Unit includes "emergency exit only alarm will sound" decal for application on door or unit.

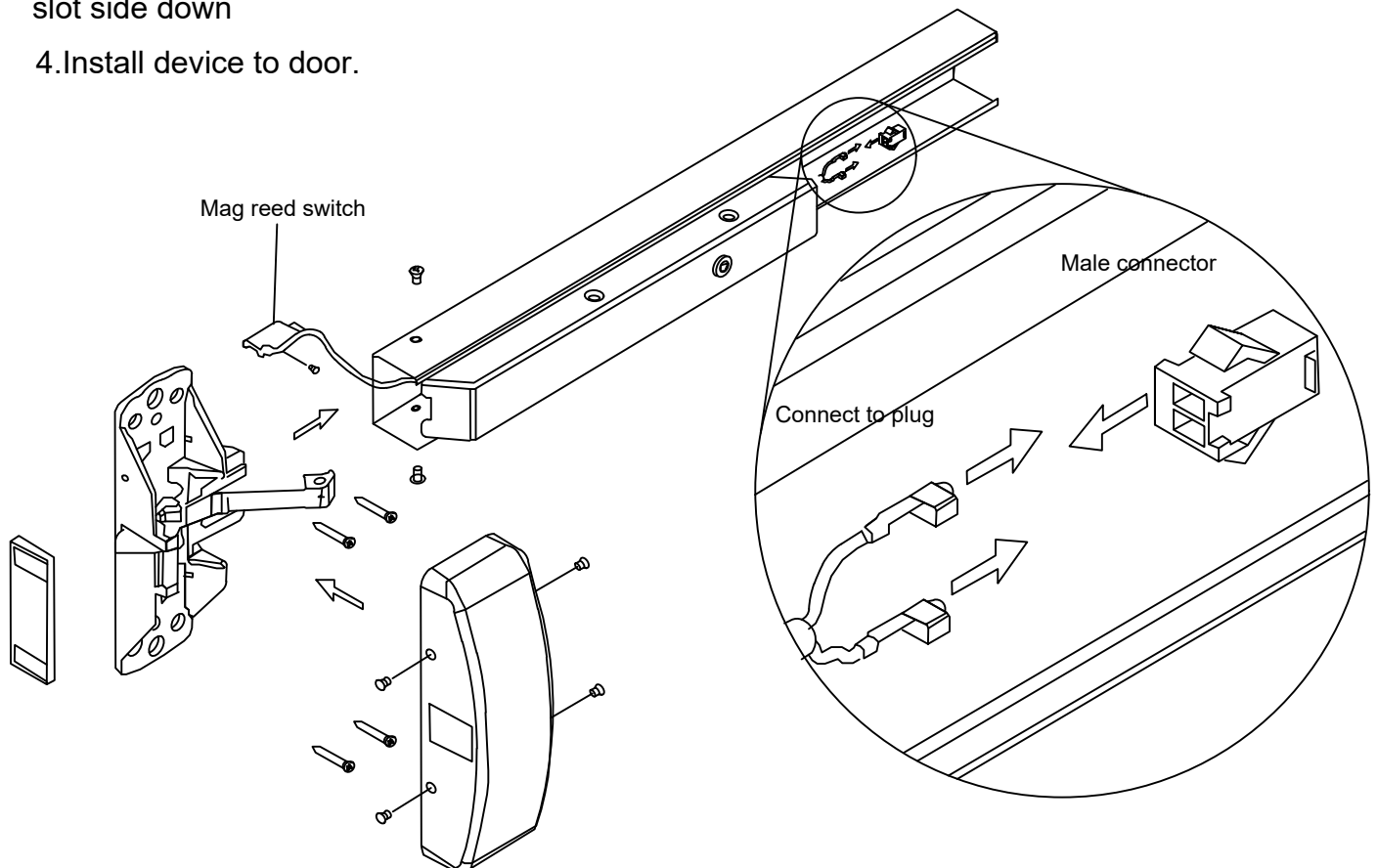
1.Assembly Alarming kit with parts as shown below:

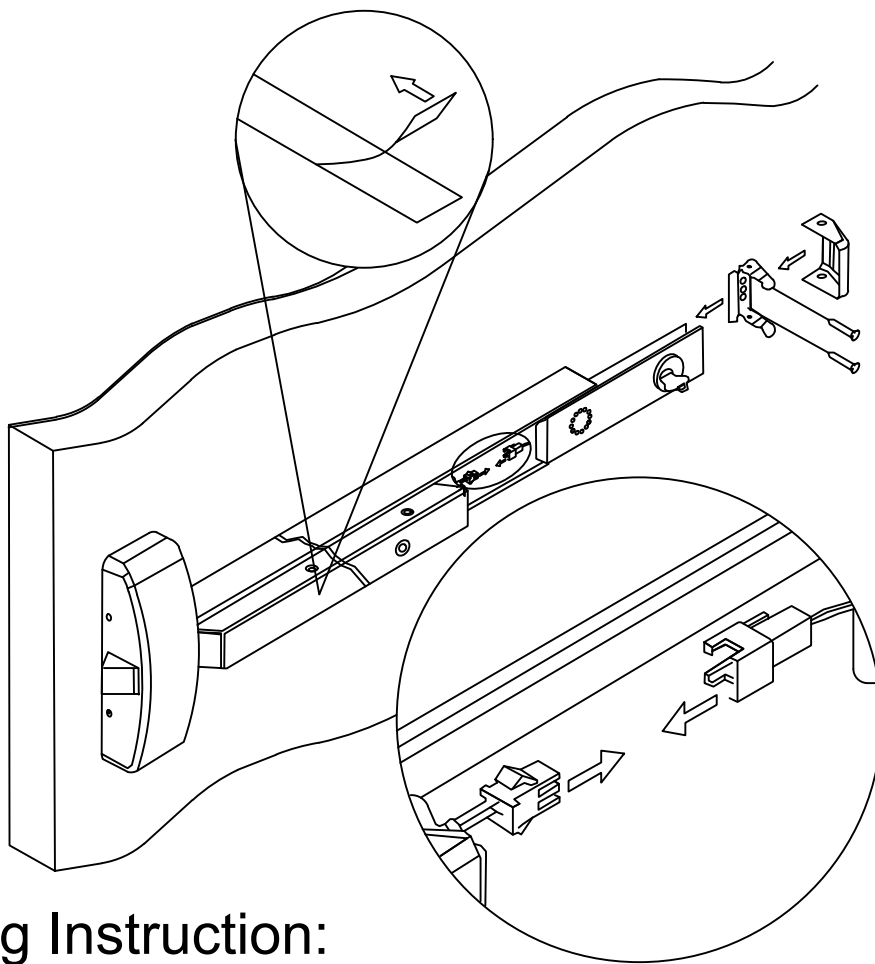


2.Cut the Device and/or Sliding shim (end opposite Cylinder hole) for proper length.

3.Connect from latch side, connector with hook side up, to plug with slot side down

4.Install device to door.



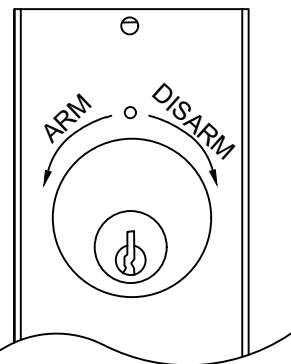


Operating Instruction:

1. Insert key into Cylinder and arm the unit by turning key Anti-clockwise to arm.
2. Depress push rail, alarm should sound immediately.
3. Turn key clockwise to Disarm

Instruction How Set the Alarm:

1. Alarm unit has an internal horn. When rail pushed, alarm will sound.
2. The unit has changeable 2 minutes alarm cut off or manual reset.
Preset at factory for 2 minutes alarm cut off.
3. Jumper provided to switch to continuous alarm, the intermittently on 5 seconds/ 5second off.
4. Key switch to turn off the alarm. 1-1/4" Cylinder with C keyway. Clockwise turn Disarm, silence or deactivates the alarm. And anti-clockwise turn Arm.



5. Alarm operate with a standard 9-volt transistor battery.
6. When low battery, a brief signal is emitted intermittently.
7. Alarm unit supplied with two switches. One monitors the push rail, and the other monitors the latchbolt for full proof security.
8. Unit includes Red " Emergency Exit only Alarm will Sound" decal for application on door or unit.