

MCVR9800 & FMCVR9800 Series

Optional Less Bottom Rod (LBR)

GRADE 1, Concealed Vertical Rod Exit Device for Metal Doors



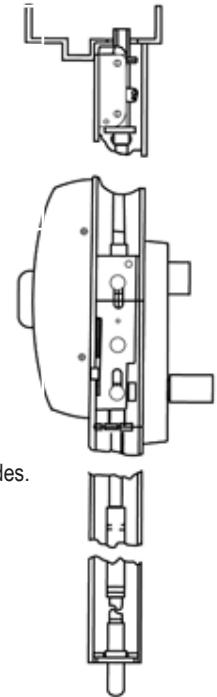
LIFETIME WARRANTY	BHMA CERTIFIED <small>Be Safe. Be Secure. Look for the Mark.</small>	MEETS <i>The Buy American Act</i>	UL US 3 HOUR FIRE RATED UL10C, UBC7-2-1997
--------------------------	---	---	---

Specifications

LBR (Optional).....	No Bottom Strike. Free access for wheel chairs, stretchers and carts which eliminates tripping potential and disfiguration of floors due to dragging of bottom bolts.
For Doors.....	Metal. 1 3/4" (44.5 mm) minimum thickness 4 1/2" (114 mm) minimum stile width
Top Chassis.....	Steel
Chassis Cover.....	Stainless Steel or Non-ferrous plated material
Mounting.....	Furnished standard with machine screws
End Cap.....	Brass, Bronze or Stainless Steel construction Available
Hand.....	Handed. Easily field reversible. Specify at time of order LHR, RHR for convenience
ANSI Standard.....	A156.3, Grade 1
Strikes.....	260 top and 265 bottom
Top and Bottom Bolts.....	Stainless Steel. Top and bottom bolt travel 7/16" (11 mm) Projection adjustable up to 1" (25 mm)

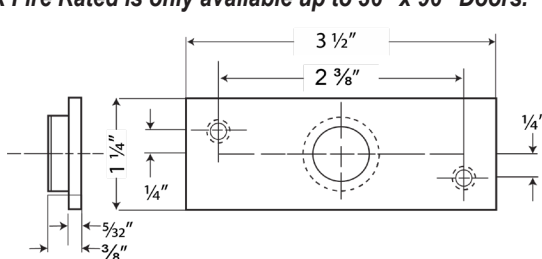


Fire Exit Hardware.....	FMCVR9800 Series for fire exit hardware for all types of 8' x 10' double doors, LBR Series for fire exit hardware for all types of 8' x 8' double doors for up to 3-hour fire labeled installations. Conforms to standards UL10C and UBC 7-2-1997 codes.
Rail Height.....	Specify door opening and mounting height of the center line of rail when ordering a Vertical Rod Exit Device 41" from floor
Trim.....	See Trim Designs section
Electronic Functions.....	(ELR) Electrical Latch Retraction and RX & LX Signal Switch available
Alarm.....	Prefix "NALRM" before PART #
Dogging Feature.....	Cylinder dogging available for non-rated applications
Anti-Microbial Coating.....	Available on US32D only. Use part # ANTB-EXIT



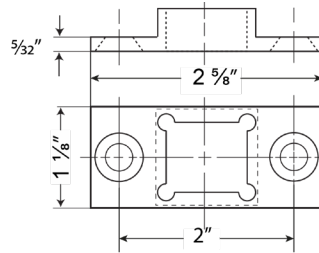
MODEL	ACTUAL LENGTH	MAX CUT DOWN	DOOR SIZE
M98CVR3684, FM98CVR3684, M98CVR3696, FM98CVR3696, M98CVR36120, FM98CVR36120	32"	6"	30" to 36" door width
M98CVR4896, FM98CVR4896, M98CVR48120, FM98CVR48120	44"	12"	36" to 48" door width

**LBR Fire Rated is only available up to 36" x 96" Doors.*



260 TOP STRIKE

- For applications metal frames
- Stainless Steel



265 BOTTOM STRIKE

- Furnished with expansion shields
- Mortised into floor
- Stainless Steel