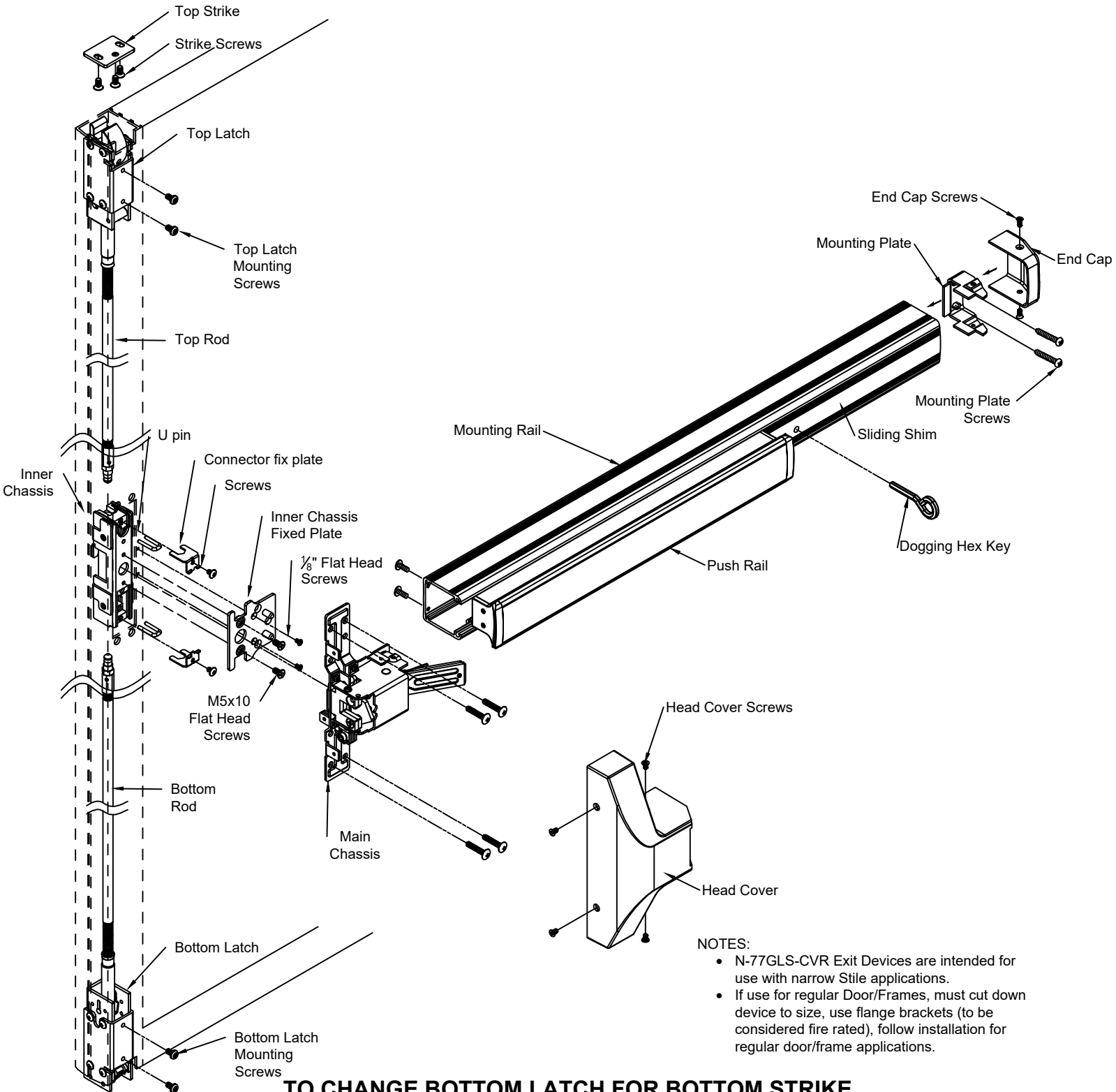


# INSTALLATION INSTRUCTIONS

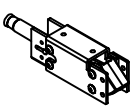
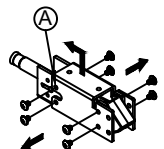
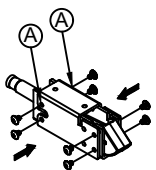
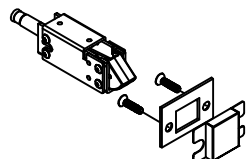
## N-77GLS-CVR NARROW HEAD CONCEALED VERTICAL ROD EXIT DEVICE FOR 2" NARROW STILE

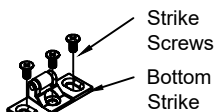


**NOTES:**

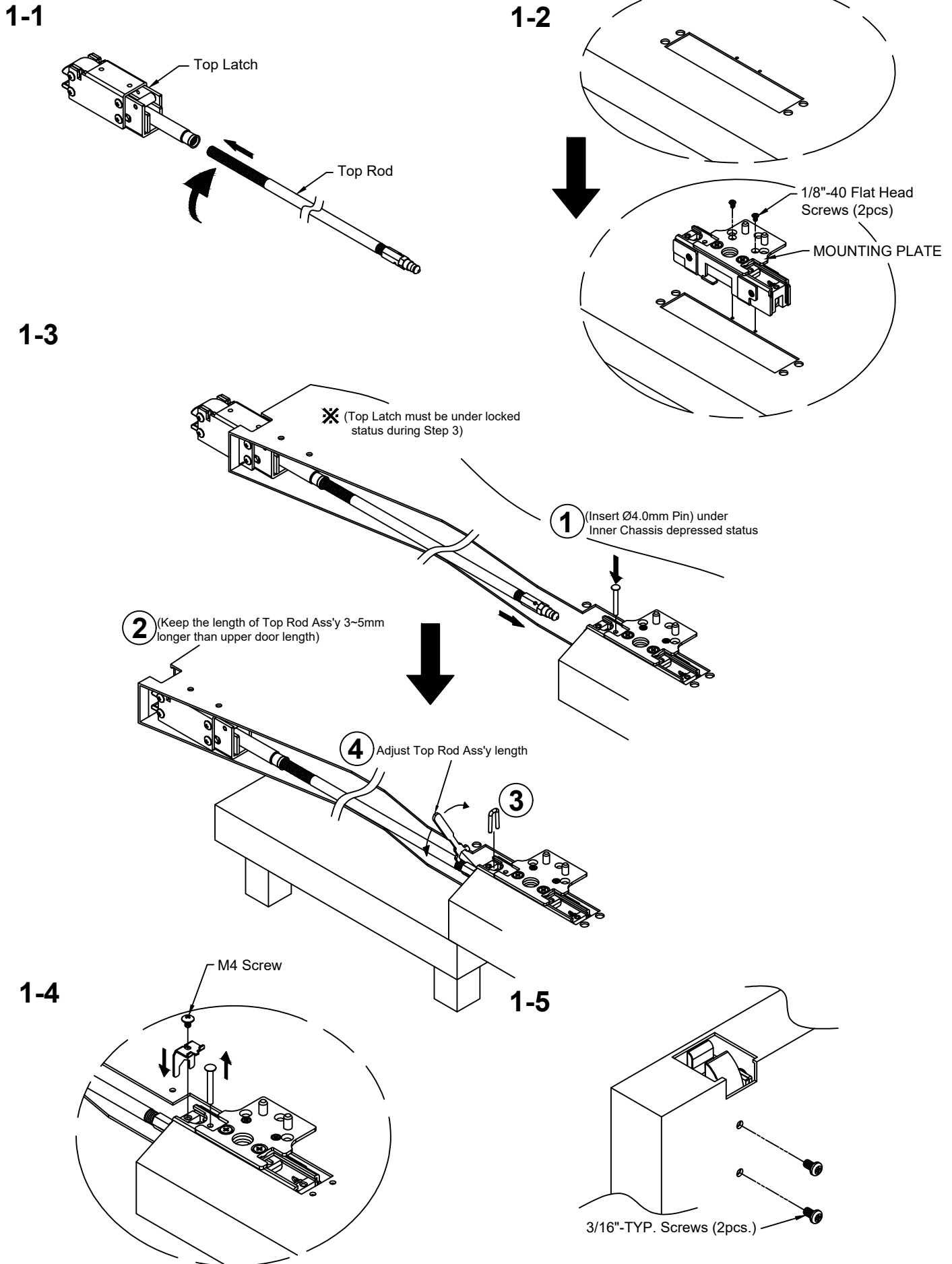
- N-77GLS-CVR Exit Devices are intended for use with narrow Stile applications.
- If use for regular Door/Frames, must cut down device to size, use flange brackets (to be considered fire rated), follow installation for regular door/frame applications.

### TO CHANGE BOTTOM LATCH FOR BOTTOM STRIKE

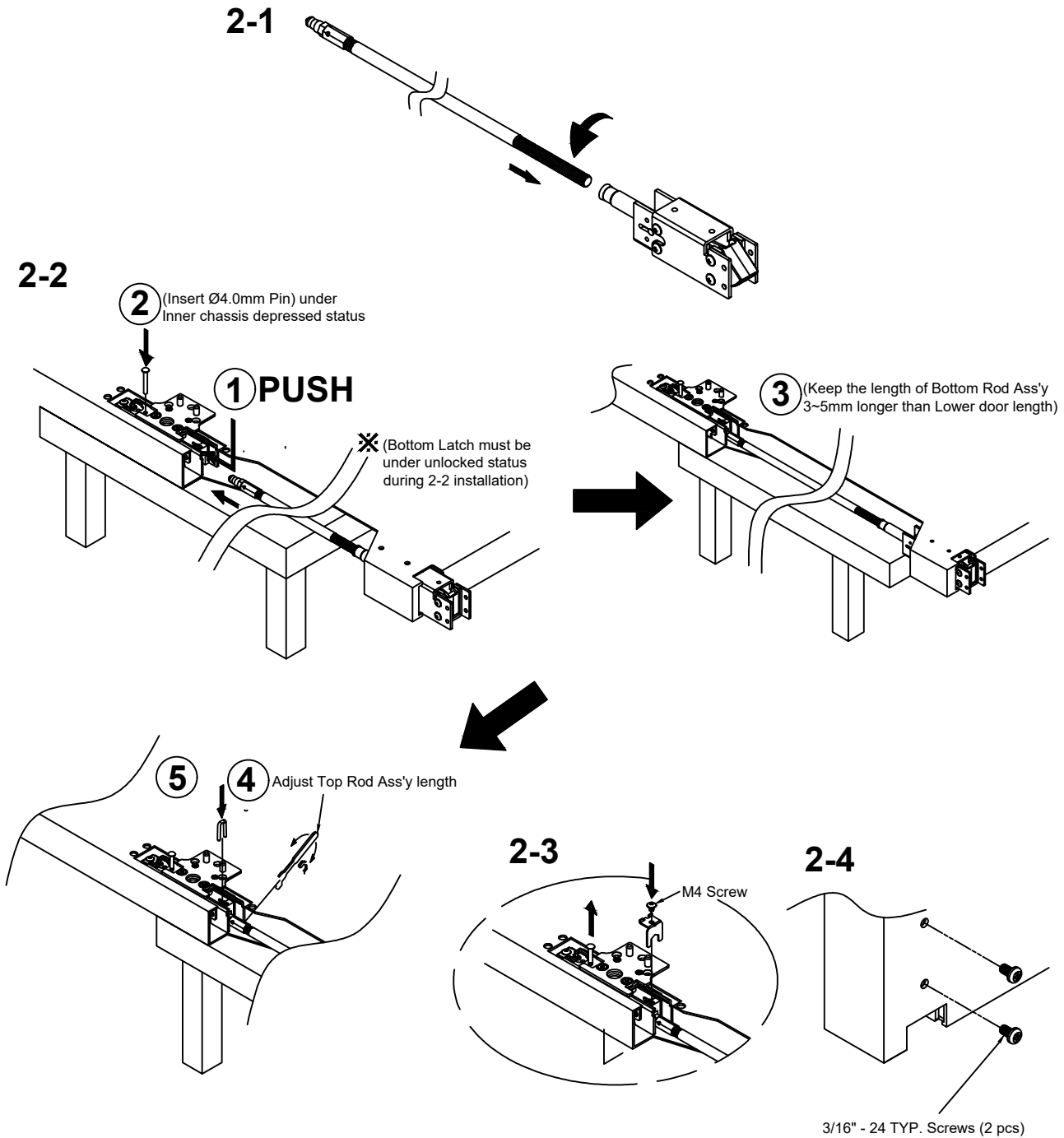
<p>1. Device factory pre-set.</p> 	<p>2-1. Unscrew and remove screw and Mounting bracket. 2-2. The Mounting bracket move backward.</p> 	<p>3. Move the Mounting bracket back to the (A) screw hole and install and lock it.</p> 	<p>4. Change Done.</p> 
---	---	---	--



# 1. INSTALL INNER CHASSIS & TOP LATCH

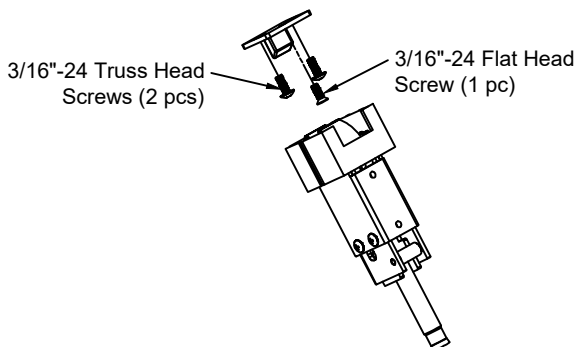


## 2. INSTALL BOTTOM LATCH (Skip this step if less Bottom Rod)

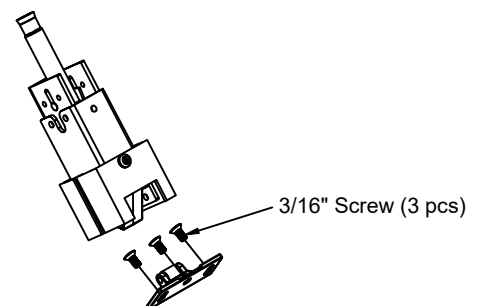


## 3. INSTALL TOP 7 BOTTOM STRIKE (Please Follow TEMPLATE)

### 3-1 Top Strike

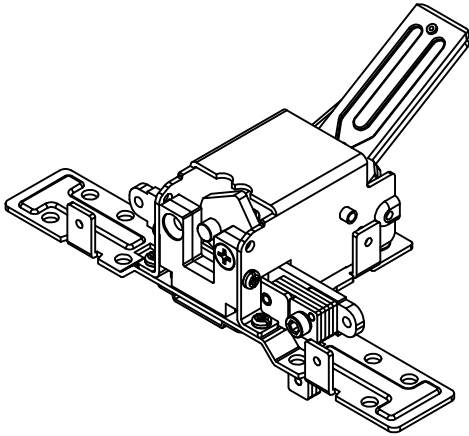


### 3-2 Bottom Strike

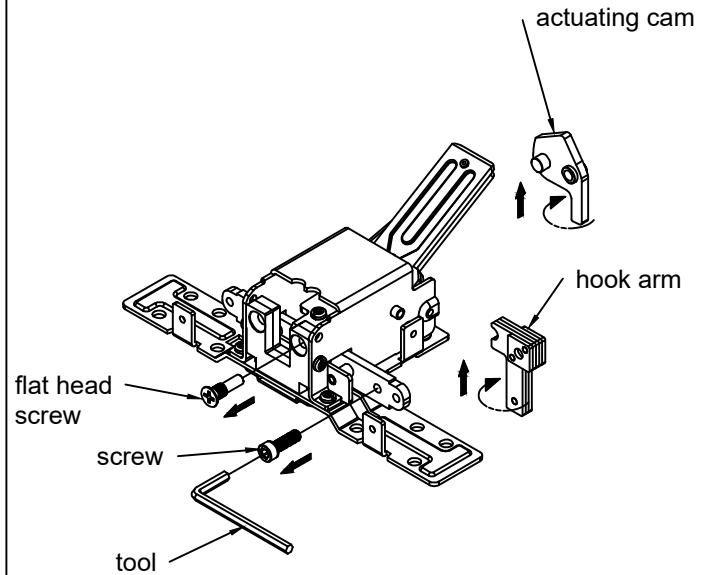


# TO CHANGE HAND OF N-77GLS-CVR VERTICAL ROD EXIT DEVICE

1. LHR

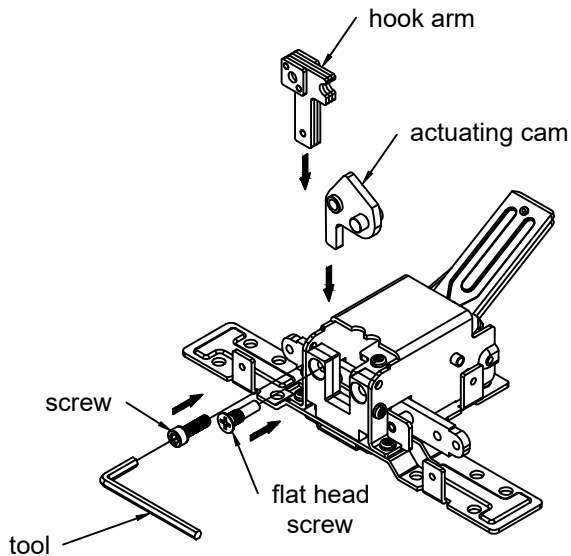


- 2-1. Loosen the screw & flat head screw to exit.
- 2-2. Remove actuating cam & hook arm.
- 2-2. Rotate 180° actuating cam & hook arm.



3-1. Reassemble actuating cam & hook cam at opposite side, as shown.

3-2. The locking screw



4. RHR Done.

