

# N-98CVR & N-F98CVR Series



Optional Less Bottom Rod (LBR)

Grade 1 Concealed Vertical Rod Exit Device for Wood & Metal Doors

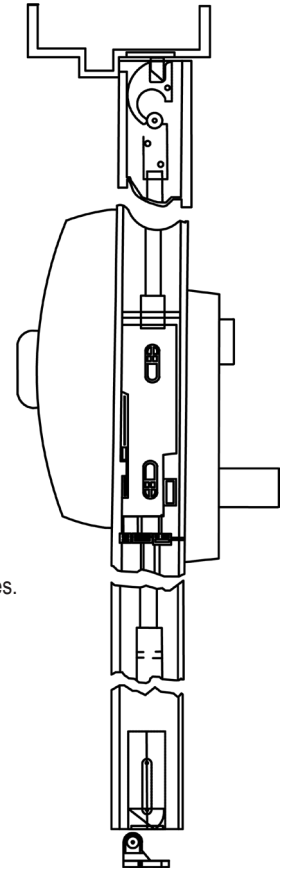


**\*Americans with Disability Act (ADA) compliant  
5 lbs opening force on ADA Series only**

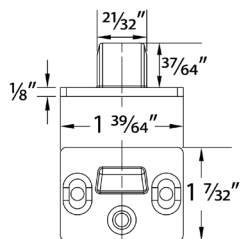
**\*Refer to the Price List for Stock Sizes and Finishes**

## Specifications

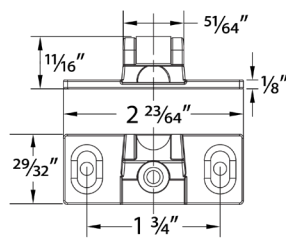
<b>LBR (Optional)</b> .....	No Bottom Strike. Free access for wheel chairs, stretchers and carts which eliminates tripping potential and disfiguration of floors due to dragging of bottom bolts.
<b>For Doors</b> .....	Wood or Metal. 1 3/4" (44.5 mm) minimum thickness 4 1/2" (114 mm) minimum stile width
<b>Top &amp; Bottom Chassis</b> .....	Steel Material
<b>Chassis Cover</b> .....	Stainless Steel Material
<b>Mounting</b> .....	Furnished standard with wood and machine screws
<b>End Cap</b> .....	Stainless Steel Construction
<b>Hand</b> .....	Handed. Easily field reversible. Specify at time of order LHR, RHR for convenience
<b>ANSI Standard</b> .....	A156.3, Grade 1
<b>Strikes</b> .....	N-260 & N-265 (Steel), 233 (Stainless Steel)
<b>Fire Exit Hardware</b> .....	N-F98CVR Series for fire exit hardware for all types of 8' x 10' double doors, LBR Series for fire exit hardware for all types of 8' x 10' double doors for up to 3-hour fire labeled installations. Conforms to standards UL10C and UBC 7-2-1997 codes.
<b>Rail Height</b> .....	Specify door opening and mounting height of the center line of rail when ordering a Vertical Rod Exit Device 41" from floor
<b>Trim</b> .....	See Trim Designs section
<b>Electronic Functions</b> .....	(ELR) Electrical Latch Retraction and RX & LX Signal Switch available
<b>Alarm</b> .....	Prefix "NALRM" before PART #
<b>Dogging Feature</b> .....	Cylinder dogging available for non-rated applications
<b>Anti-Microbial Coating</b> .....	Available on US32D only. Use part # ANTB-EXIT



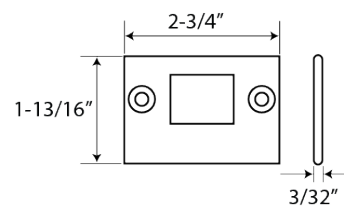
MODEL	ACTUAL LENGTH	MAX CUT DOWN	DOOR SIZE
N-98CVR3684, N-F98CVR3684, N-98CVR3696, N-F98CVR3696, N-98CVR36120, N-F98CVR36120	32"	6"	30" to 36" door width
N-98CVR4896, N-F98CVR4896, N-98CVR48120, N-F98CVR48120	44"	12"	36" to 48" door width



- N-260 TOP STRIKE**
- Surface Mount
  - Steel Material



- N-265 BOTTOM STRIKE**
- Surface Mount
  - Steel Material



- 233 BOTTOM STRIKE**
- Flush Mounting Stainless Steel
  - Furnished with expansion shields
  - Mortised into floor