

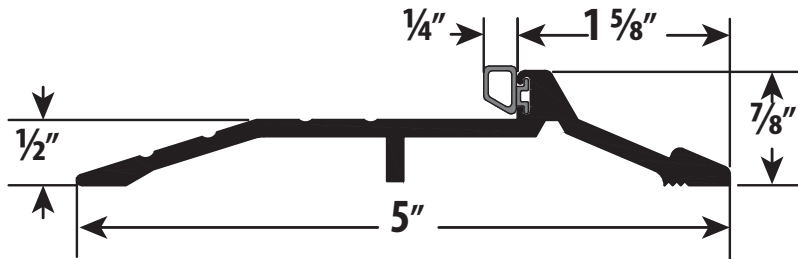


PST-200 Series

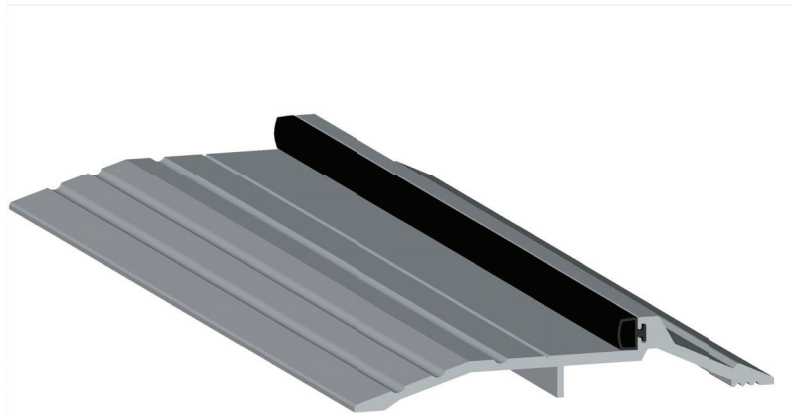
INSTALLATION GUIDELINE

7/8" (22.2mm) PANIC SADDLE THRESHOLD

7/8" H x 5" W
22.2 mm x 127 mm



SCREW SIZE : #10 x 1-1/2" PFHWS



INSTALLATION INSTRUCTIONS

1. Carefully measure to fit within the frame opening and make sure the vinyl makes contact with door face when door is closed.
 2. If necessary trim and notch the threshold ends to accommodate the side jamb stops.
 3. Trim seal 1/8" longer than the retainer threshold at each end.
 4. Mark and drill pilot holes through the pre-drilled holes in the threshold and fasten with screws provided.
- Use a weatherproof sealant at all edges and joints.
5. Operate the door multiple times to ensure proper adjustment so as not to prevent the door from self-closing and latching.

MATERIAL FOR USE IN LISTED STEEL FRAMES AND CLASSIFIED HOLLOW METAL STEEL COMPOSITE TYPE FIRE DOORS ARE RATED UP TO AND INCLUDING 3 HOURS, WOOD COMPOSITE TYPE FIRE DOORS ARE RATED UP TO AND INCLUDING 1-1/2 HOURS, AND WOOD CORE FIRE DOORS ARE RATED 20 MINUTES WITHOUT HOSE STREAM.