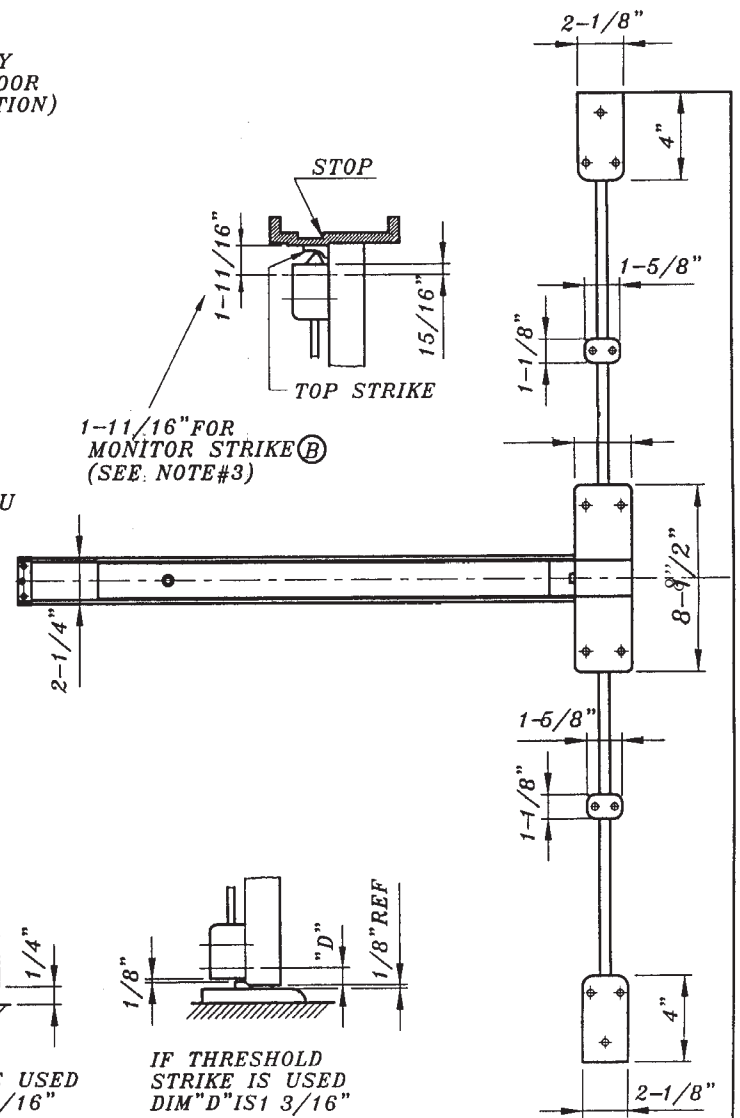


B. 41" FROM FINISH FLOOR
 C. (40 5/16 WHEN USING ANSI 161 CUT OUT)



1. SURFACE OF DOOR WHERE EXIT DEVICE IS TO BE APPLIED MUST BE FLUSHED
2. SEE MASTER SHEET FOR AREAS REQUIRING REINFORCEMENTS
3. SEE STRIKE TEMPLATE FOR TOP AND BOTTOM STRIKES
4. WE RECOMMEND THAT ALL TAPPED HOLES BE DRILLED AND TAPPED IN FIELD
5. TOLERANCE ON ALL DIMENSIONS $\pm 1/64$ "



SURFACE VERTICAL ROD EXIT DEVICE

9800 SERIES 2017/12 VERSION NO.

