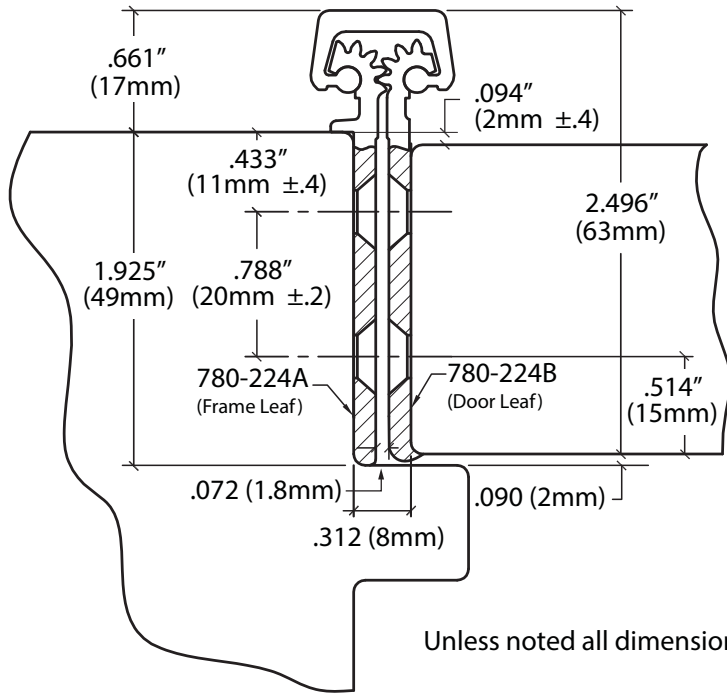


#12 x 82" F.H.  
countersunk wood  
or machine screws,  
(38 places)

32 bearings  
spaced equally  
@ 2.563"  
center to center

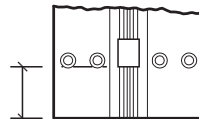


Unless noted all dimensions  $\frac{\pm.020''}{\pm.5mm}$

### Vertical Hole Spacing

Non cumulative tolerances on  
hole to hole spacing.

	Metric (mm)	Decimal (in.)
A	2108.0 $\begin{smallmatrix} +0.00 \\ -0.80 \end{smallmatrix}$	82.992 $\begin{smallmatrix} +0.000 \\ -0.030 \end{smallmatrix}$
B	40.0 ±.25	1.575 ±.010
C	85.0 ±.20	3.346 ±.008
D	130.0 ±.20	5.118 ±.008
E	200.0 ±.20	7.874 ±.008
F	257.0 ±.20	10.118 ±.008



1.4375"  
[ 36.5125mm ] Ref.

End Of Hinge To First  
Bearing, Both Ends.



6605 Flotilla St.  
City of Commerce  
CA 90040 USA  
Tel: (323) 888-6601  
FAX: (323) 888-6699  
Website: cal-royal.com  
Email: sales@cal-royal.com

ITEM NO.:	DESCRIPTION:	SCALE:
<b>CRHD782240</b>	FULL CONCEALED MORTISE HEAVY DUTY CONTINUOUS GEARED HINGE	NOT TO SCALE
ANSI:	UNIT:	VERSION:
	inches [mm]	ver. 1.0 rev. 04/12
	BY:	scarlos