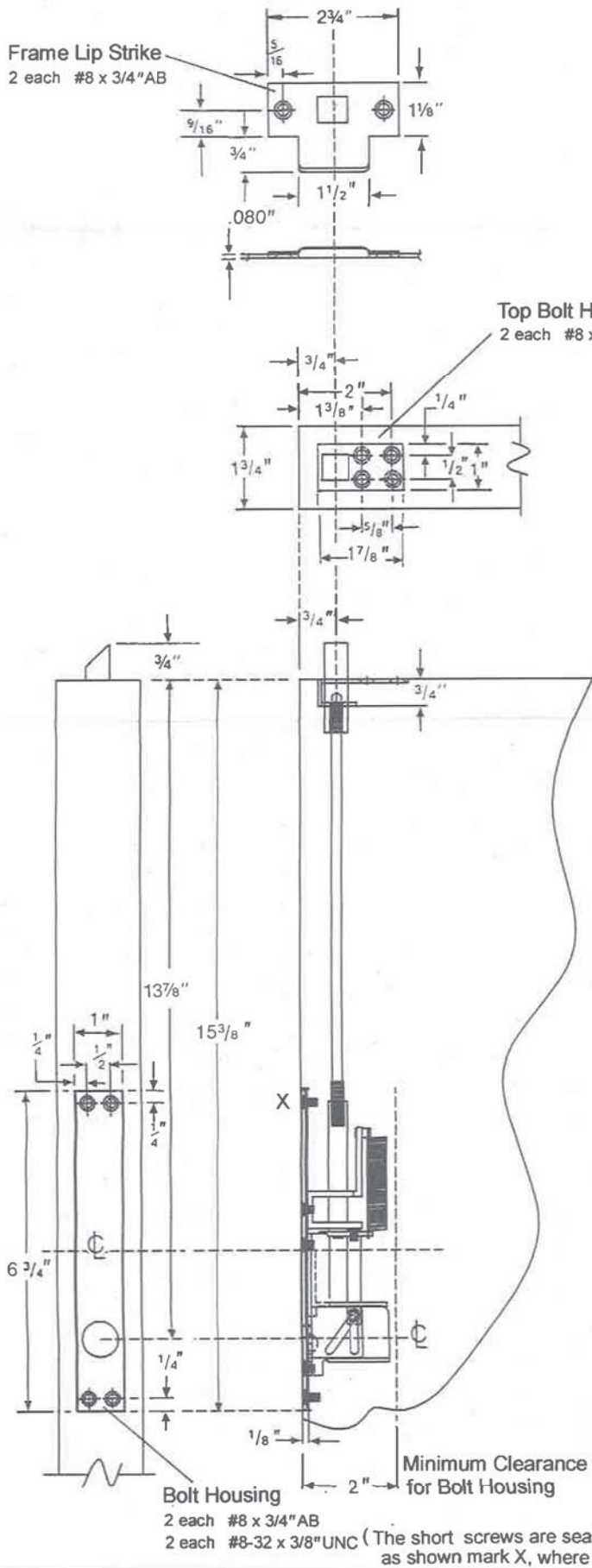
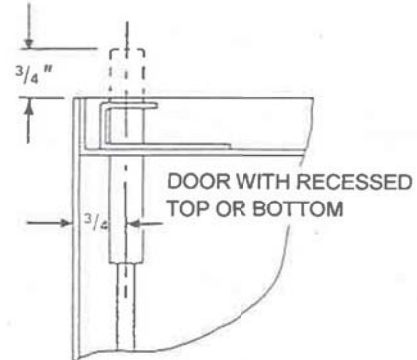


CONSTANT LATCHING FLUSH BOLT (FOR METAL DOORS APPLICATION)



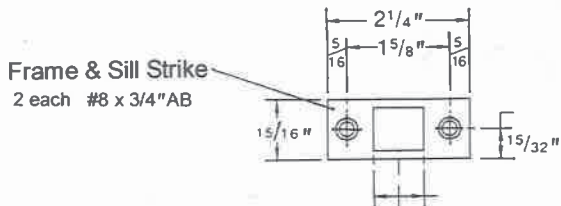
DIMENSIONS SHOWN ON THIS TEMPLATE ARE FOR TOP FLUSH BOLTS.



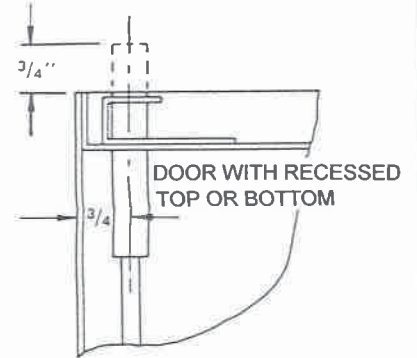
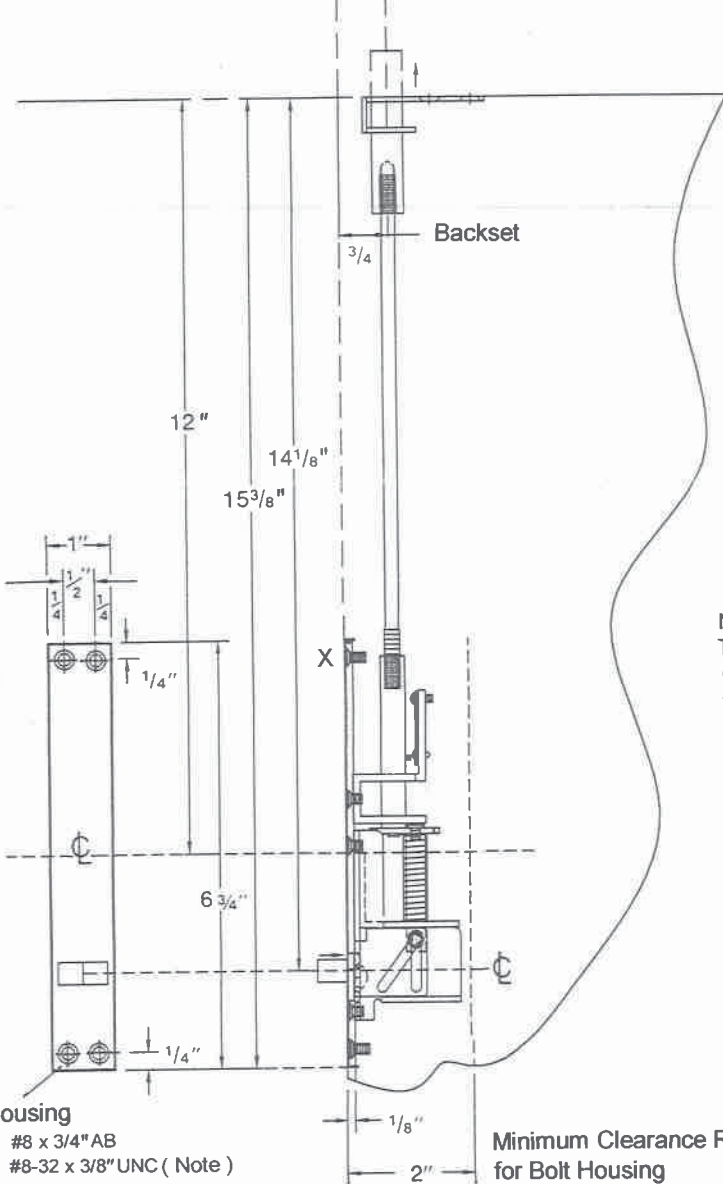
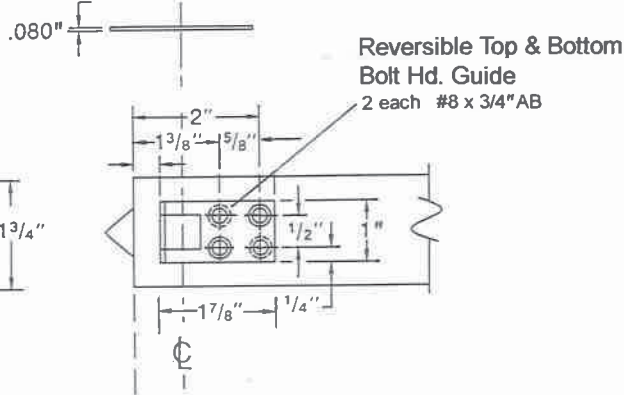
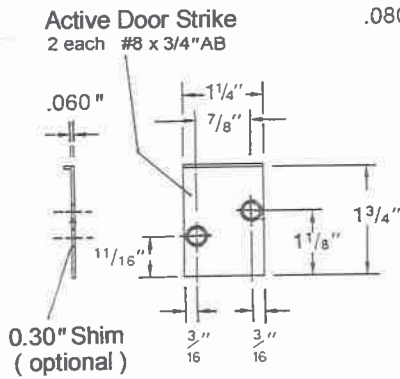
NOTE: WHEN TWO-POINT ENGAGING WITH LATCHING ACTION IS REQUIRED, IT IS RECOMMENDED THAT ONE CONSTANT, SELF-LATCHING FLUSH BOLT BE USED WITH ONE AUTOMATIC FLUSH BOLT. SELF-LATCHING BOLT SHOULD BE INSTALLED AT TOP OF DOOR.

SCREW DETAILS: #8-32 x 3/8" UNC - flat countersunk head machine screw, total 2 pcs.
#8 x 3/4" AB - undercut flat countersunk head, dual purpose machine/tapping screw, total 6 pcs.

AUTOMATIC FLUSH BOLTS (FOR METAL DOORS APPLICATION)



DIMENSIONS SHOWN ON THIS TEMPLATE ARE FOR TOP FLUSH BOLTS. FOR BOTTOM BOLTS INVERT AND MEASURE FROM EDGE OF DOOR.



Note :
The short screws are seated into the holes of bolt housing as shown mark X, where faces the Bolt Extension Rod.

SCREW DETAILS: #8-32 x 3/8" UNC - flat countersunk head machine screw, total 2 pcs.
#8 x 3/4" AB - undercut flat countersunk head, dual purpose machine/tapping screw, total 8 pcs.