

IF LOCK STILE IS 4-1/2" WIDE OR WIDER DIM IS 2-3/4"  
IF LOCK STILE IS UNDER 4-1/2" DIM IS 1/2" OF STILE

THIS DIMENSION WILL VARY WITH STOP HEIGHT AND DOOR CLEARANCE. (SEE ILLUSTRATION)

Approx. Equal Distance

LOCATE DRILL & TAP THESE HOLE WHEN APPLYING HARDWARE TO DOOR

CL OF PUSH RAIL/KNOB (IF REQ'D.)

41" From Finish Floor  
(40 5/16" When Using ANSI 161 Cut Out)

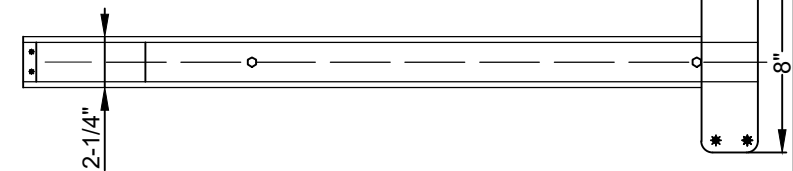
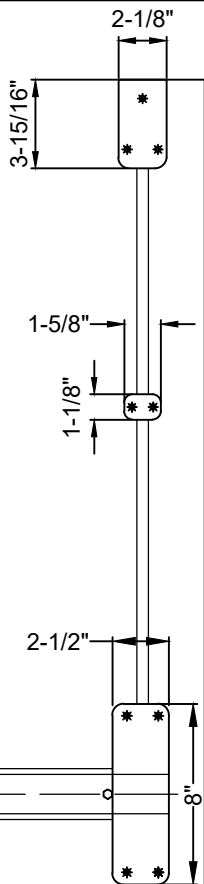
2-1/8" DIA. THRU DOOR IF USE WITH CYLINDRICAL TRIM

#10-24 TAPPED HOLES


INSIDE FACE OF DOOR

1-11/16" FOR MONITOR STRIKE®  
(SEE NOTE # 3)

TOP STRIKE



The illustration and technical description in this cut sheet is current as of the date in version date on the right. Cal-Royal Product reserves the right to, and may, on occasions, make changes and/or improvements in designs and dimensions without prior notice.

|   |  |           |  |                    |                                      |                 |            |                       |
|---|--|-----------|--|--------------------|--------------------------------------|-----------------|------------|-----------------------|
|  | 6605 Flotilla Street<br>City of Commerce<br>CA 90040 USA<br>Tel.# (323) 888-6601<br>FAX # (323) 888-6699<br>WEB SITE:<br>CAL-ROYAL.COM<br>Email: sales@cal-royal.com | ITEM NO.  | DESCRIPTION :                                    | NOT<br>TO<br>SCALE | UNIT                                 | Prepared By:    | DATE       | DWG. NO.              |
|   |  | ALBR7760V | SURFACE VERTICAL ROD EXIT DEVICE LESS BOTTOM ROD |                    | PRIMARY DIMENSION<br>SHOWN IN INCHES | BBT / ADG / CVL | 07/29/2025 | EDT-4134-07/25-1 of 1 |
|   |  |           |  |                    | PAGE 1 OF 1                          |                 |            | REV: Ver-02           |