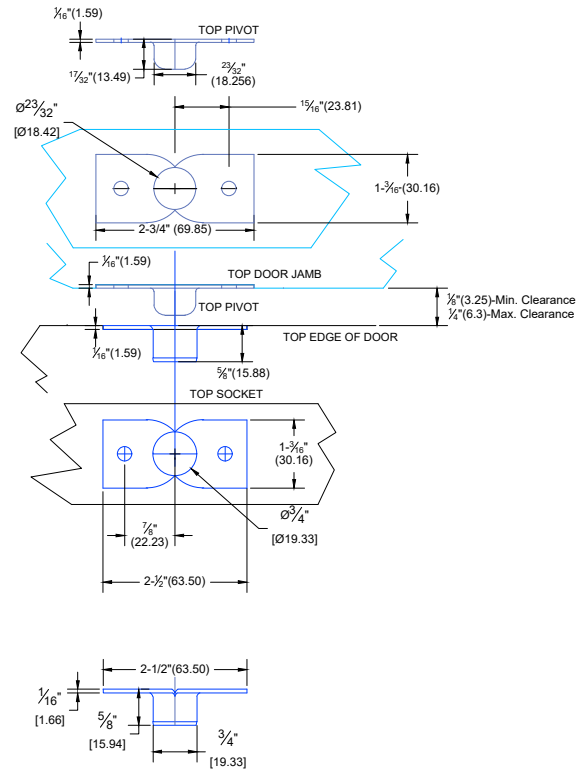
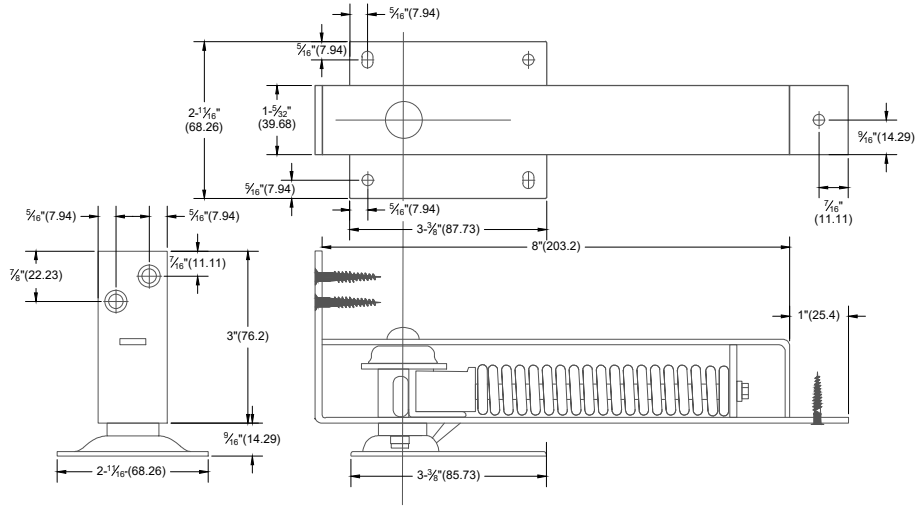


# DAFH8 - Double Acting Residential Floor Spring Hinge



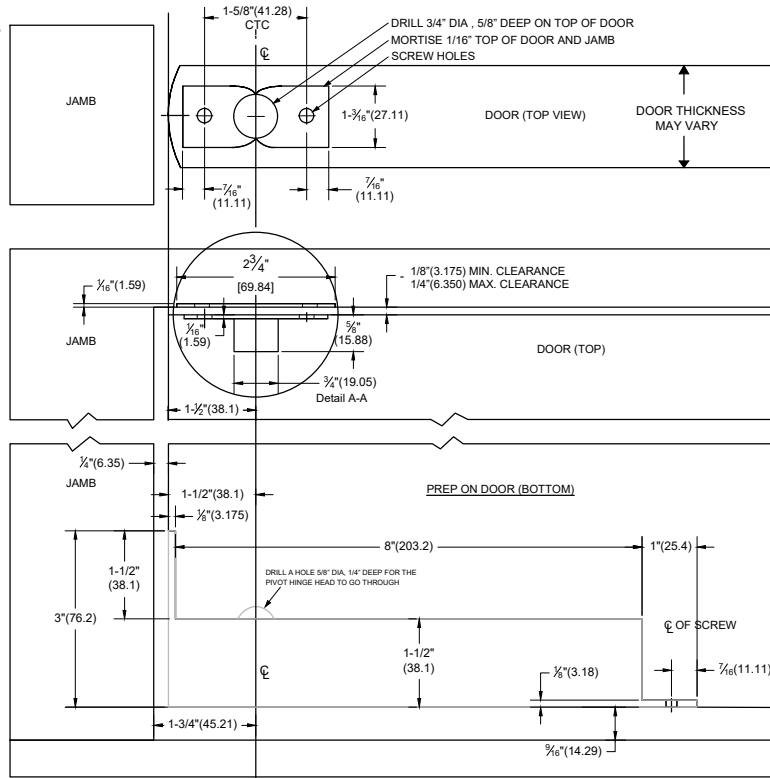
**Detail A-A**

## INSTALLATION FOR 1-3/8" DOORS

1. Trim door to fit opening, 11/16" (17mm) less than height, 1/4" (6mm) less than width.
2. Round off hinge stile of door to 1-1/2" (38mm) radius.
3. Cut mortise for hinge full thickness of door as shown.
4. Center spring on door and screw it in place, attaching end plate with it.
5. Install top pivot to head jamb and top socket to door as shown.
6. Tilt door to engage pivots, align door, wedge in place and screw floor plate to floor. (Slotted holes in plate permit adjustments).
7. Slip tab end of side cover under end plate and screw side cover to door.

## FASTENER:

- # 8 x 5/8" FHWS
- # 10 x 3/4" FHWS
- # 10 x 1-1/8" FHWS
- # 10 x 1-1/8" PHWS
- # 13 x 1-1/8" FHWS



The illustration and technical description in this cut sheet is current as of the date in version date on the right. Cal-Royal Product reserves the right to, and may, on occasions, make changes and/or improvements in designs and dimensions without prior notice.



6605 Flotilla Street  
City of Commerce  
CA 90040 USA  
Tel: # (323) 898-6601  
FAX: # (323) 898-6699  
WEB SITE:  
CAL-ROYAL.COM  
Email: sales@cal-royal.com

ITEM NO.	DESCRIPTION :
DAFH8	Double Acting Residential Floor Spring Hinge

NOT TO SCALE
PAGE 1 OF 1

UNIT
PRIMARY DIMENSION SHOWN IN INCHES, DIMENSIONS IN ( ) ARE MM

Prepared By:	DATE
BBT / ADG / CVL	03/28/22

DWG. NO.	BHT7000
REV	----