

IF LOCK STILE IS 4-1/2" WIDE OR WIDER DIM IS 2-3/4" IF LOCK STILE IS UNDER 4-1/2" DIM IS 1/2" OF STILE

THIS DIMENSION WILL VARY WITH STOP HEIGHT AND DOOR CLEARANCE. (SEE ILLUSTRATION)

INSIDE FACE OF DOOR

Approx. Equal Distance

LOCATE DRILL & TAP THESE HOLE WHEN APPLYING HARDWARE TO DOOR

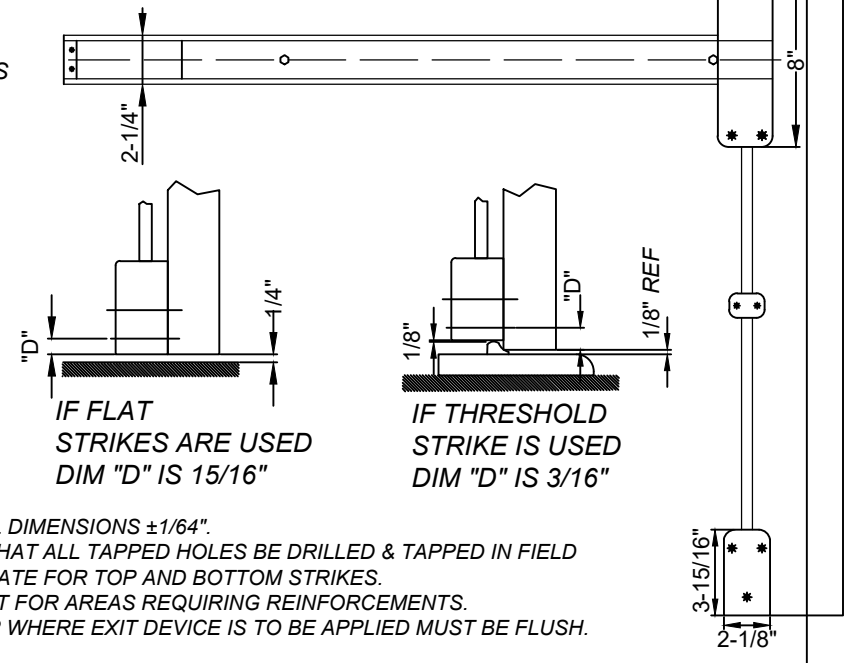
CL OF PUSH RAIL/KNOB (IF REQ'D.)

IF LEVER HANDLE TRIM IS USED A 2-1/8" DIA. THRU HOLE IS REQUIRED

#10-24 TAPPED HOLES

41" From Finish Floor
(40 5/16" When Using ANSI 161 Cut Out)

TOP STRIKE



1. TOLERANCE OF ALL DIMENSIONS $\pm 1/64$ ".
2. WE RECOMMEND THAT ALL TAPPED HOLES BE DRILLED & TAPPED IN FIELD
3. SEE STRIKE TEMPLATE FOR TOP AND BOTTOM STRIKES.
4. SEE MASTER SHEET FOR AREAS REQUIRING REINFORCEMENTS.
5. SURFACE OF DOOR WHERE EXIT DEVICE IS TO BE APPLIED MUST BE FLUSH.

The illustration and technical description in this cut sheet is current as of the date in version date on the right. Cal-Royal Product reserves the right to, and may, on occasions, make changes and/or improvements in designs and dimensions without prior notice.

	6605 Flotilla Street City of Commerce CA 90040 USA Tel.# (323) 888-6601 FAX # (323) 888-6699 WEB SITE: CAL-ROYAL.COM Email: sales@cal-royal.com	ITEM NO.	DESCRIPTION :	NOT TO SCALE	UNIT	Prepared By:	DATE	DWG. NO.
		A7760V	TEMPLATE FOR SURFACE VERTICAL ROD EXIT DEVICE	PAGE 1 OF 1	PRIMARY DIMENSION SHOWN IN INCHES	BBT / ADG / CVL	07/29/2025	EDT-4129-07/25-1 of 1
								REV: Ver-02